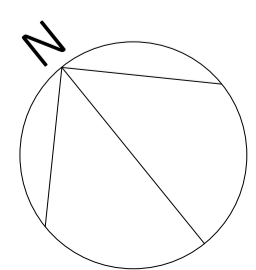
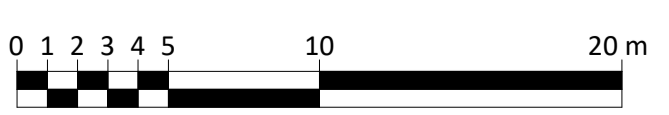


1 Proposed Site Plan with Easements
1 : 250

- Key**
- Concrete road / HGV Yard
 - Parking
 - Pavement
 - 2.4m Weldmesh Boundary Fence
 - EV charger
 - Application Boundary
 - Existing Retained Tree
 - Proposed Tree
 - Removed Tree
 - Planting
 - Hedges
 - Easement to Below Ground Services
 - Landscape Strip



Notes
Drawing to be read in conjunction with most recent revision of Landscape Masterplan 1222-1-001 by Macgregor Smith Landscape Architects

Plot 5610 Hatfield

Drawing title
Proposed Site Plan with Easements

Drawing No.
3502-SRA-XX-XX-D-A-PL-021

Project No.	Originator	Funct.	Spatial	Form	Dis.	System	Number
RL	EM	-	-	-	-	-	-

Drawn by	Checked by	Approved by	A1 Scale	Date	Reason for Issue
RL	EM	-	As indicated	16/02/2023 17:02:06	Planning

SRA ARCHITECTS

Station House, Ashley Avenue Bath BA1 3DS | 01225 827444 | www.sra-architects.co.uk © (UK 2023) SRA Architects LLP

Notes
SRA ARCHITECTS LLP accepts no liability for use of this drawing by parties other than the party for whom it was prepared, or for purposes other than those for which it was prepared.
When the above drawing is issued in DWG format it is an uncontrolled version issued to enable the recipient to prepare their own documents/models/drawings for which they are solely responsible. It is based on background information current at the time of issue. SRA ARCHITECTS LLP accepts no liability for any such alterations or additions to or discrepancies arising out of changes to such background information which occur to that information after it is issued by SRA ARCHITECTS LLP.
Responsibility is not accepted for errors made by others in scaling from this drawing.