

Building Regulation Notes

The following notes apply, unless otherwise detailed elsewhere on this drawing.

Part A | Structural
See separate Engineer's drawings and calculations as applicable.

Part B | Fire Safety
All means of escape is as per Approved Document B1.
All emergency lighting is to BS 5266 Part 1 1996.
All fire alarm works to be installed under B 5839 2002 Part 1.
Fire exit signs and notices to comply with the requirements of BS 5449.
All walls and ceilings in shops are to be Class 1 spread of flame as per BS 476: 1987 (1993). Walls & ceilings in circulation areas are to be Class 'O' spread of flame as per BS 476 1987 (1993).
All fire doors to be a minimum of FD30S with self-closing devices and intumescent strips. If doors form part of a protected route fit cold smoke seals. Also provide Fire Door Keep Shut notices to both faces.
Any voids in excess of 20m to have FR30 cavity barriers.
Any plastic light diffusers to be TPA rated.
Occupancy figures are based on 2m²/person.
Escape door widths are as annotated on drawings - minimum 800mm. Escape doors are fitted with either panic bolts, push pads or thumb turn screws.
Provide fire fighting equipment to EN3.
All Auto Doors to fail safe to an easily openable position upon activation of the Fire Alarm activation, or power failure.
All mechanical ventilation ducts, where passing through protected routes must be clad to achieve 1 hr fire protection.
Occupancy within store will never exceed 6 persons.

Part C | Site Preparation
All new walls to have a Hybrid DPC minimum 150mm above ground level.
All new floors to have 1200 gauge DPM linked to DPC.
Any new cavity wall to have vertical DPC's to all reveals.

Part D | Toxic Substances
Not applicable

Part E | Resistance to Sound
Refer to individual details where applicable.

Part F | Ventilation
New toilet accommodation without windows to have mechanical extract ventilation to give 3 air changes per hour ducted to external air.
Toilet accommodation without windows to have an opening light of 5% of the floor area and 4000mm² background ventilation.
Staff areas/offices to have mechanical ventilation of 10 litres per second per occupant as rapid ventilation 5% of floor area.
Retail areas to have rapid ventilation of 5% of the floor area or mechanical ventilation of 10 litres per second per occupant. (This only applies to new stores).
All windowless accommodation to have minimum 15 minute overrun on mechanical extract, including VVC.
All mechanical ventilation to comply with CIBSE Guide.

Part G | Hygiene
Sanitary accommodation to be provided in accordance with BS 6469 Part 1 1994.
All unvented hot water systems to BS 7206:1990 and:
Have an energy cut out switch.
Temperature relief valve.
Pressure relief valve.
All pipes discharge via a 50mm diameter tundish to either an external wall or a floor gully.
All sanitary appliances to discharge to existing drainage Unless Stated Otherwise.

Part H | Drainage & Waste
Sanitary Plumbing to be as follows:
All traps are to 75mm deep seal.
Wash hand basin wastes 32mm diameter.
Sink wastes 38mm diameter.
Waste pipes to be 38mm diameter upto 2.0m in length and then 50mm diameter.
All drain runs to be 100mm diameter and bedded in pea gravel at falls of 1:40.
All drainage to be in accordance with BS 8301 1985.
All stack pipes to terminate to fresh air.

Part J | Combustion Appliances
All heating will be electric.

Part K | Protection
All doors within store to have vision panels.

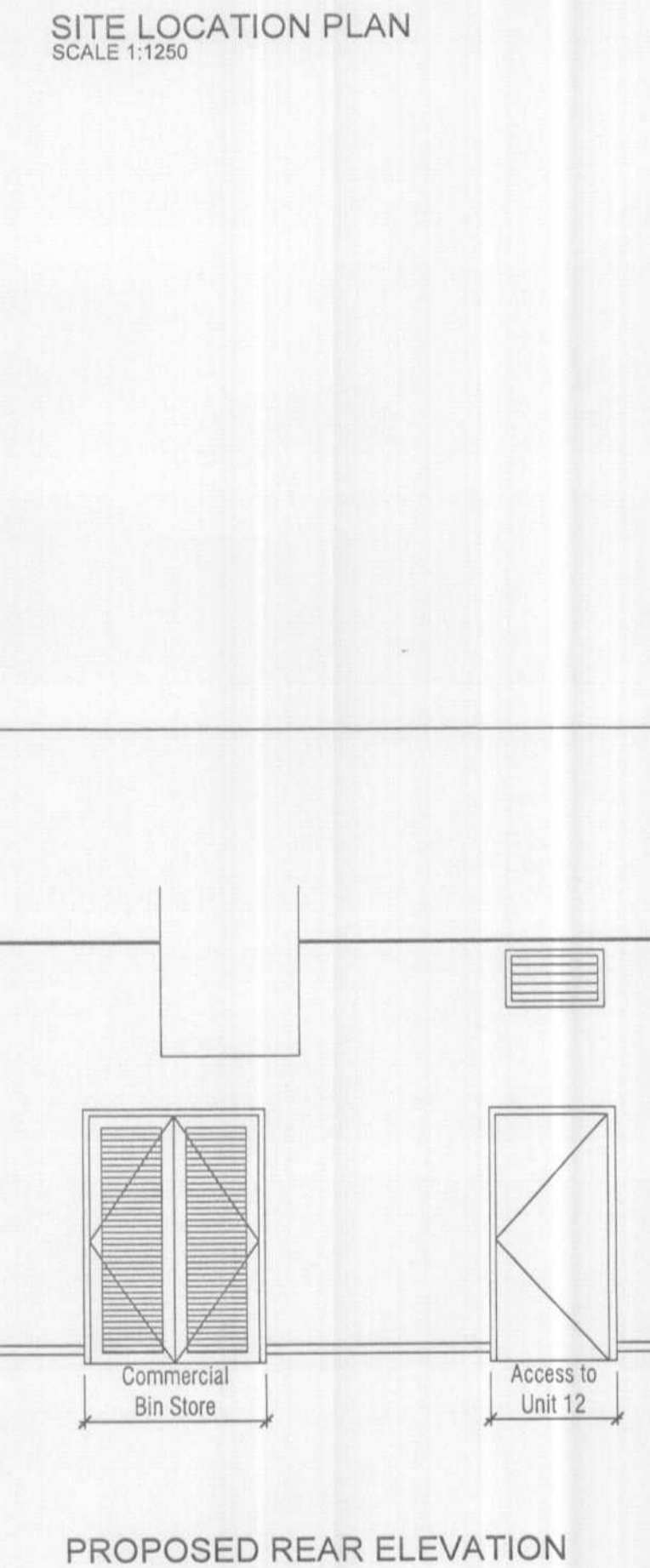
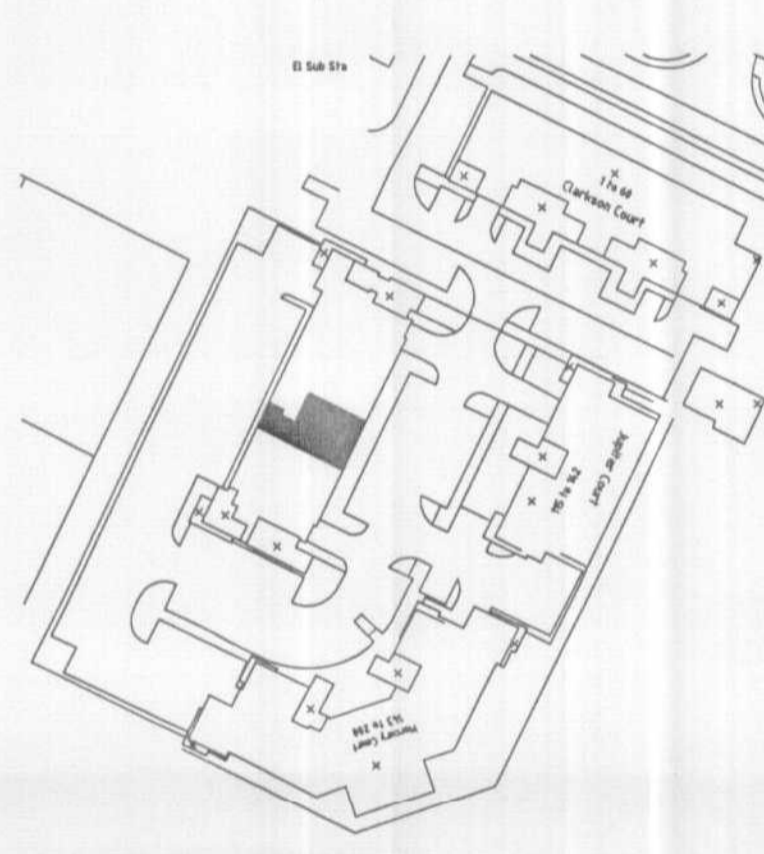
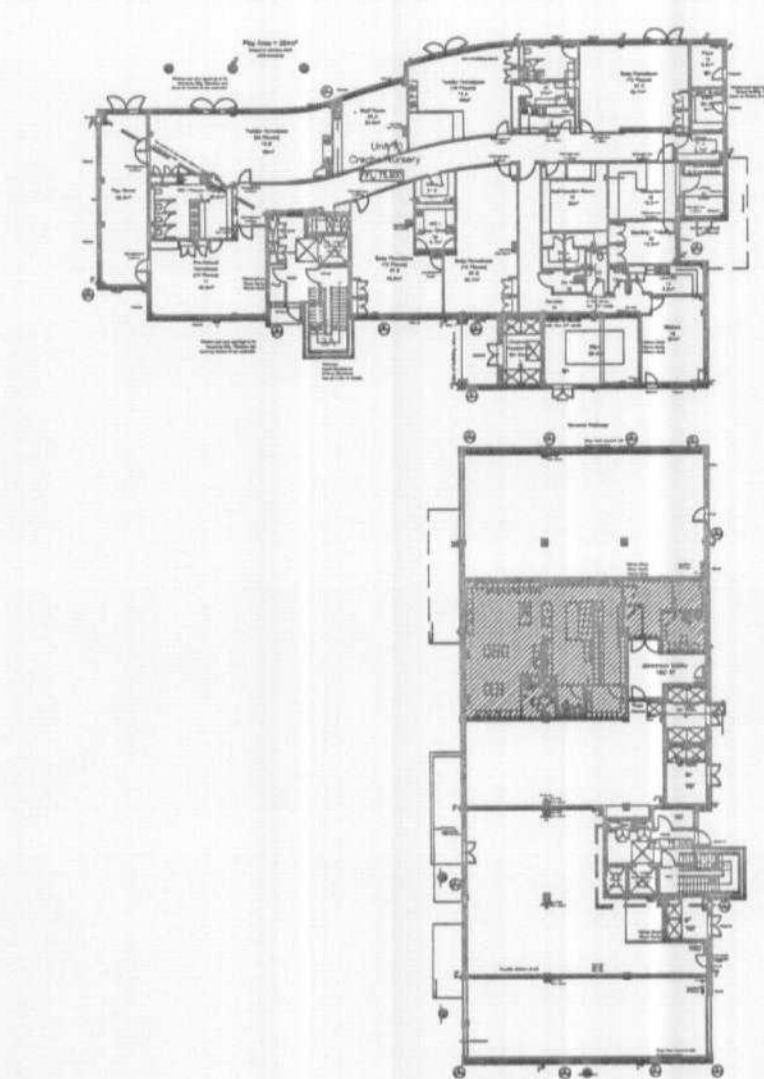
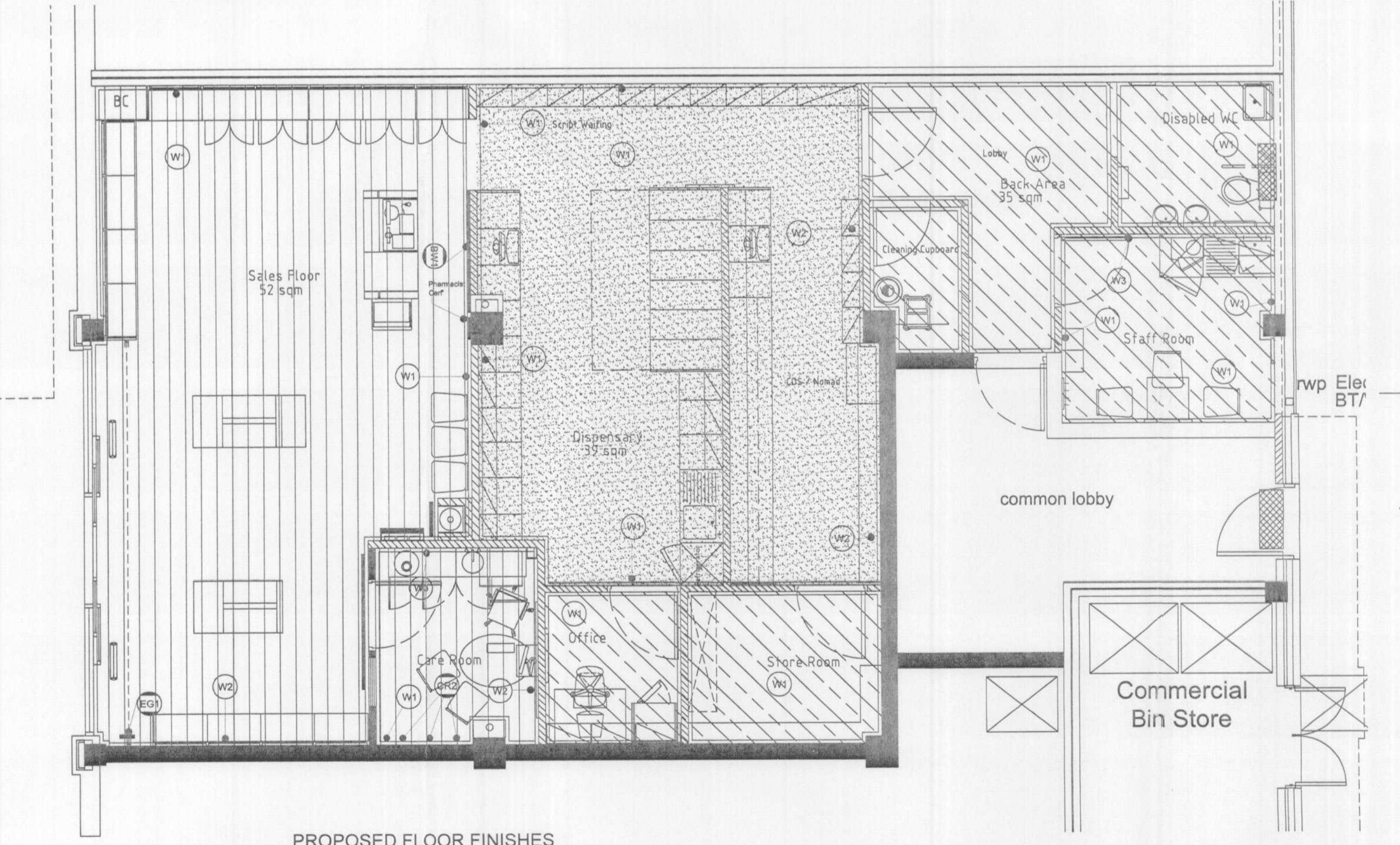
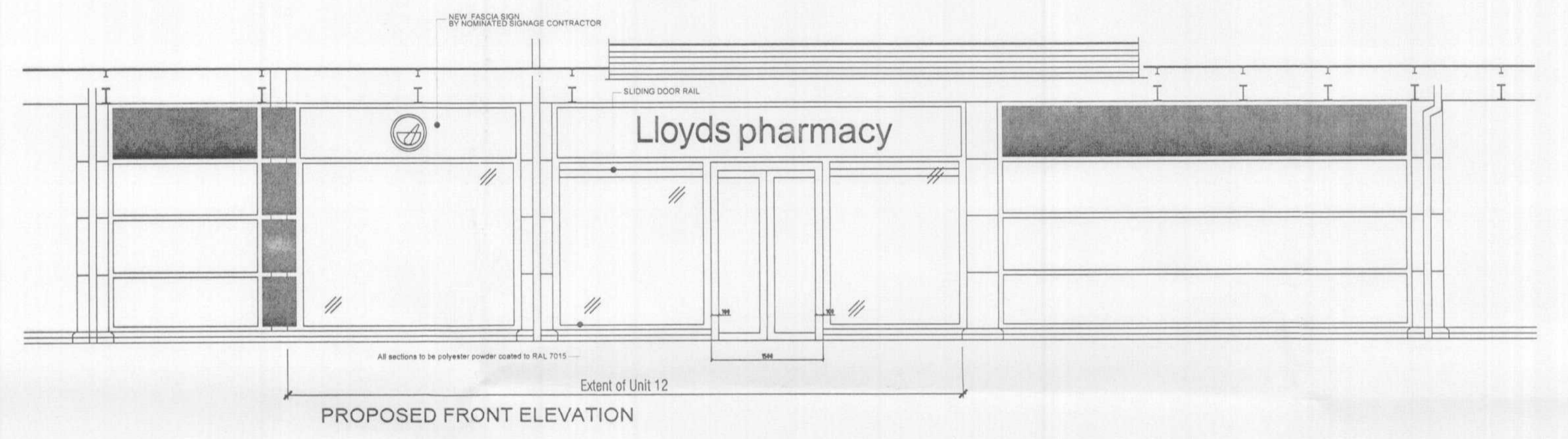
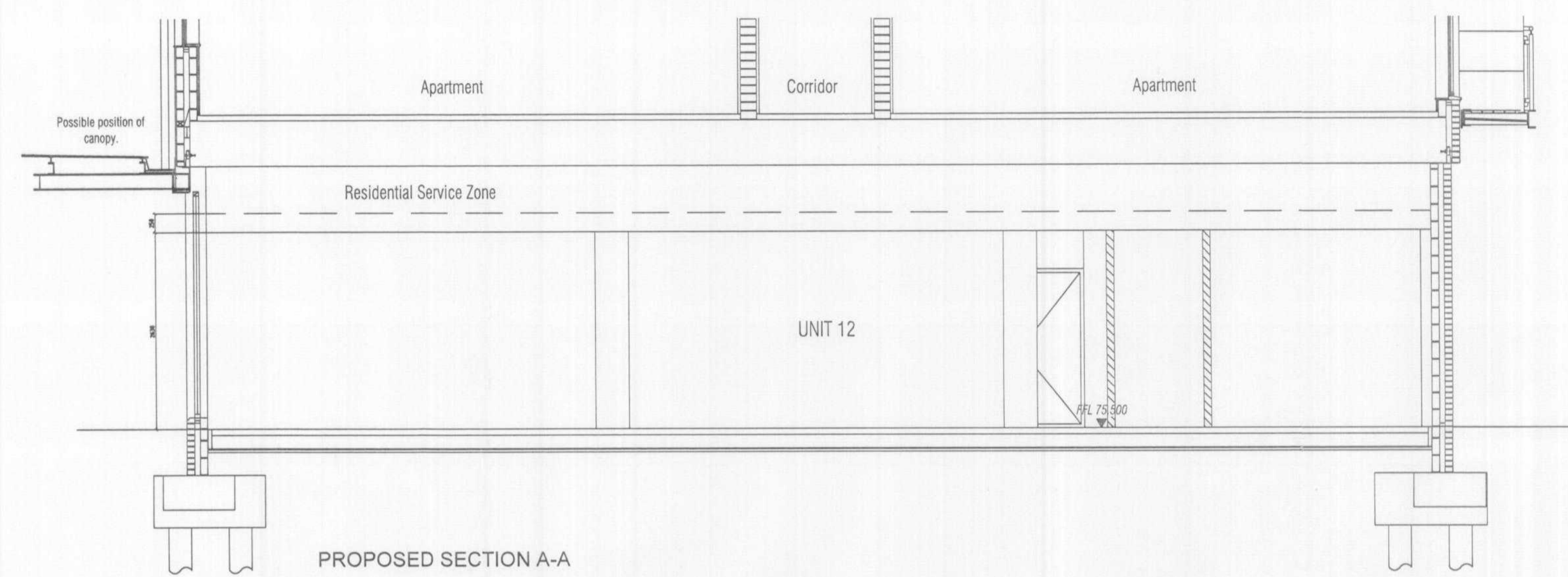
Part L | Conservation of Power
Internal lighting must achieve an average of 45 luminaire-lumens/circuit watt over backshop areas & 15 luminaire-lumens/circuit watt for sales floor.
Lighting controls should be provided to avoid unnecessary lighting during daylight hours.
All heat loss is controlled by the shell contractor.
Installed Air Conditioning is to comply fully with Part L.

Part M | Access to Building
All new entrance doors to have level thresholds.
All new entrance doors to have 1000mm clear opening width.
All doors to have vision panels (except for reasons of privacy) between 500-1500mm from floor level.
Disabled WC's (where required) at to fitted out in accordance with Diagram 16 of the Approved Document M.
All shops (where practical) to have level sales areas.
All ramps to be min 1.5m wide with a max. fall of 1:12, and where possible be accompanied by steps.
All glazing to entrance doors & store front to include manifestations (1st at 850 to 1000mm, 2nd 1400 to 1600mm), see signage for more information.

Part N | Glazing
All glass in critical locations such as doors and side screens to be safety glass to BS 620 1981 up to 1500mm above finished floor level.
All shopfronts to have manifestation by means of corporate Lloydspharmacy logos sited 1.5m from floor level.

Part P | Electrical
All electrical installation to comply with BS 7671: 2001.
Dwellings & business to have separate supply.

PLEASE NOTE
THE FIT OUT WORKS SHOWN ON THESE DRAWINGS ARE REFURNISHMENT IN NATURE AND THE BUILDING REGULATION NOTES SHOULD BY USED FOR DESIGN GUIDANCE ONLY, WHERE APPLICABLE



Graphics Specification:

- WS1** Services Panel
- EG1** How are you?
- WA1** Text above water cooler & leaflet display unit
- CR1** Care Room vinyls for door & glazed panel
- CR2** A4 Lloyds branded poster/s
- BW1** Back wall graphic
Note: image to be selected based on best fit
- CD1** Cash Desk Graphic

Note: The graphic icon refers to page numbers in the Lloyds Pharmacy brand manual

Wall Finish Specifications:

- W1** Colour: Bone
Manufacture: Dulux | Ref: 78YR 83/037
Type: Matt Emulsion / Gloss
- W2** Colour: Mint
Manufacture: Crown | Ref: NCS 0030-850G
Type: Matt Emulsion / Gloss
- W3** Colour: Burnt Amber
Manufacture: Dulux | Ref: 88YR 24/569
Type: Matt Emulsion / Gloss
- W4** Colour: Mid Green
Manufacture: Crown | Ref: NCS 2050 B50G
Type: Matt Emulsion / Gloss

Flooring Specification:

- Harley Premier Collection Woodplank Floor Covering
HPC3002 in Yellow Teak
Reflective Value 17.11 / Slip rating - Not rated
- Vinyl floor ref VYP356, in colour "Aegean" by Marley Floors.
- Entrance Matting ref CT001 by EMS Grey / Grey.
- Dispensary Flooring ref Gerstor, Ambience in colour "Coe"

NOTES
This drawing is a design intent drawing only considering proportion, profile and visual aesthetics only.
Dimensions shall not be scaled from this drawing.
To be read in conjunction with the Lloyds Standard Design manual

REV	DATE	INITIALS	DESCRIPTION
C	21-09-07	DAH	SHOPFRONT WINDOW GLAZING AMENDED
B	14-09-07	DAH	SHOPFRONT WINDOW GLAZING AMENDED
A	06-07-07	DAH	UPDATED TO CONTRACT MANAGERS COMMENTS

FLOOR AREA TABLE:		SQ/M
DISPENSARY FLOOR AREA		39
NON DISPENSARY FLOOR AREA		52
BACK OF HOUSE AREA		35
GROSS FLOOR AREA		126

NO. OF PERIMETER BAYS	14
NO. OF GONDOLA'S	07

ISSUE:	Provisional <input type="checkbox"/> Tender <input checked="" type="checkbox"/> As Built <input type="checkbox"/> Current <input type="checkbox"/>
DRAWING TITLE	PROPOSED LAYOUT + Site Loc Plan
DRAWING NUMBER	6983-LP-003-C
SCALE	1:50
DATE	04-06-07
DRAWN	DAH
REVISION	C
CHECKED	

Tuscan Studios
14 Muswell Hill Road
Highgate
London
N6 5UG
T: 020 8815 9597
F: 020 8883 4274
info@epocinteriors.com www.epocinteriors.com

PROJECT
6983 COMET SQ
HATFIELD

CLIENT
Lloydspharmacy

PLANNING DEPARTMENT
OFFICE COPY
28 OCT 2007
2007/1594