

John Dickie Associates
Manor Barn,
Wilsthorpe,
Stamford,
Lincs
Pe9 4pe

Tel 01778 560811
Fax 01778 561167

PLANNING
DEPARTMENT
OFFICE COPY
12 NOV 2007
No. S/2007/1704/MA

Proposed Development at
Mymwood House, Shepherds Way,
Brookmans Park, AL9 6NN

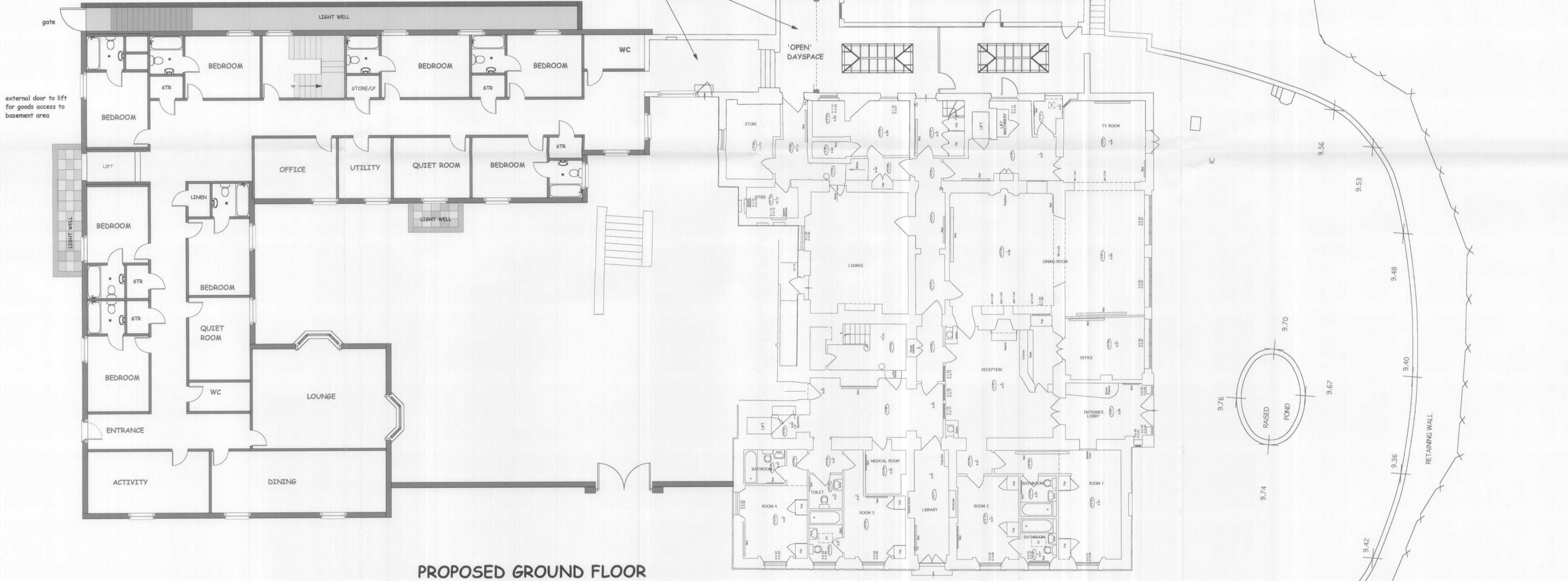
Drawing Title : Proposed
Ground Floor Layout

Client Harrington Care Limited

Date July 2007

Scale 1 to 100

Drawing No JDA/03/940/PRE.001A
Rev A August 2007 Minor amendments
to light wells and stair.



PROPOSED GROUND FLOOR