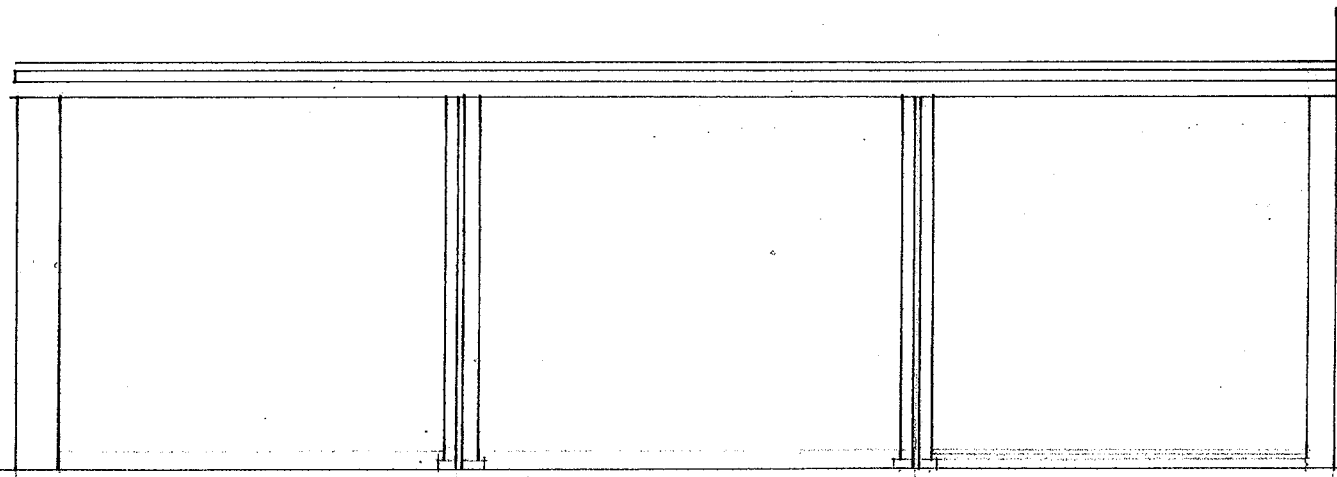


# DRWG. No. 4

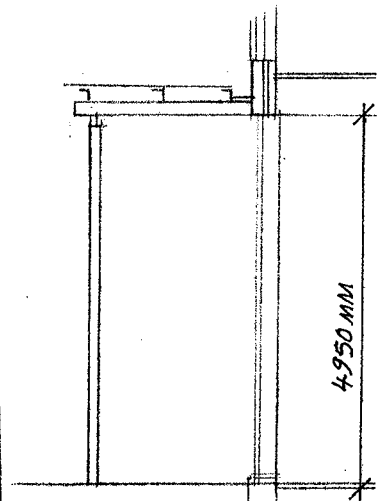
13 PARKHOUSE COURT, HATFIELD, AL10 9RQ

( ALL DIMENSIONS TO BE CHECKED ON SITE )

DRAWN BY MR. M. F. YU (R. I. B. A.) 17 WESTWARD WAY, KENTON, HARROW, MIDDLESEX HA3 0SE. TEL. 020-8907-9328. DATE 7/2007



SHOPFRONT



SECTION A-A



PART PLAN (EXISTING)

1:100

No: S6/07/150/1/27  
WELWYN HATFIELD  
PLANNING  
OFFICE COPY  
12 OCT 2007

# DRWG. No. 7

13 PARKHOUSE COURT HATFIELD AL10 9RQ

(ALL DIMENSIONS TO BE CHECKED ON SITE)

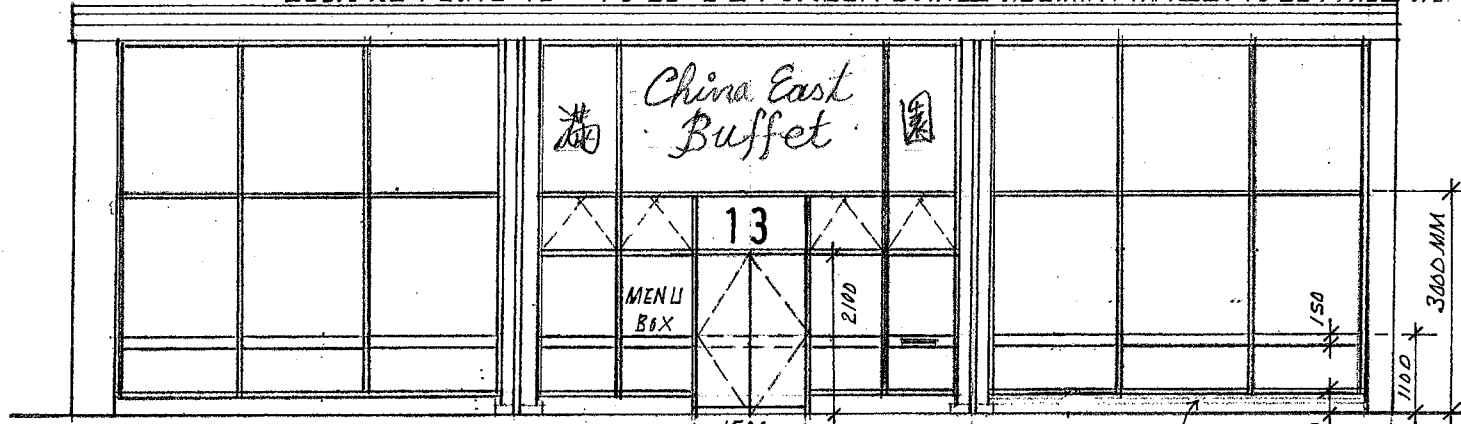
DRAWN BY MR. M. F. YU (R. I. B. A.) 17 WESTWARD WAY, KENTON, HARROW, MIDDLESEX HA3 0SE. TEL. 020-8907-9328. DATE 7/2007

SHOPFRONT - MAIN FRAMES TO BE 150 MM X 100 MM DARK BRONZE ANODISED ALUMIN., WITH 10.8 MM THICK PILKINGTON LAMINATED SAFETY GLASS (BS 6206 CLASS A)

SIGNS - ENGLISH LETTERING - 3D POLISHED STAINLESS STEEL LETTERING (COLOUR - GOLD) WITH INTERNAL PURPLE NEON LIGHTING BEHIND THE LETTERING TO CREATE A "HALO" EFFECT. ALL LETTERING TO BE FIXED ON POWDER COATED ALUMIN. BASE PANELS (COLOUR - DULUX PRIMROSE WHITE) ON 18 MM THICK MARINEPLY ON 45 X 75 MM S/W FRAMES (STRUCTURAL GRID - 450 X 450 MM)

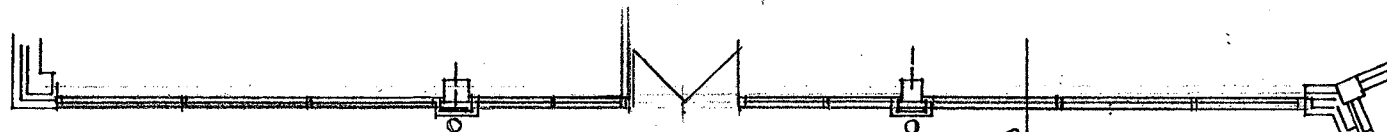
CHINESE LETTERING - 3D POWDER COATED ALUMIN. (IN RED COLOUR BS 04 E 53) LETTERING WITH INTERNAL LIGHT BLUE NEON LIGHTING TO CREATE A "HALO EFFECT". FIXING DETAILS AS ABOVE.

DOOR NO PLATE "13" TO BE 3D POWDER COATED ALUMIN., IN RED. TO BE FIXED AS ENGLISH LETTERING.



SHOPFRONT

150 WIDE 275 MM HIGH CONC. BASE TO BE CLADDED WITH 25 MM THICK BLACK GRANITE TILES (WITH GOLD CHIP)



PART PLAN (PROPOSED)

A 1:100

No: 36/07/15/15/17  
12 OCT 2007  
NELWYN HATFIELD  
PLANNING  
OFFICE COPY

SECTION A-A

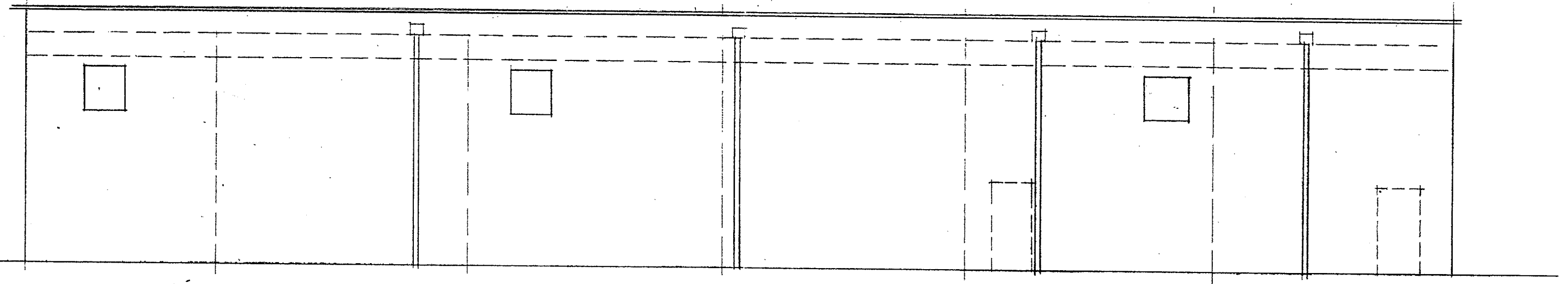
DRWG. No. 3

13 PARKHOUSE COURT, HATFIELD AL10 9RQ

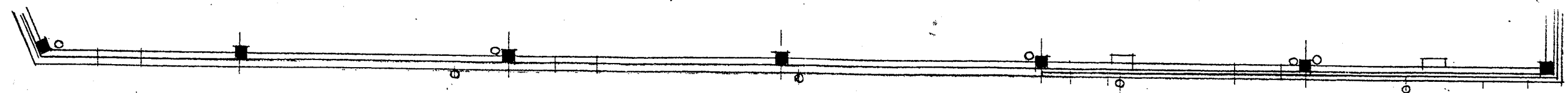
DRAWN BY MR. M.F. YU (R.I.B.A.) 17 WESTWARD WAY, KENTON, HARROW, MIDDLESEX HA3 0SE. TEL. 020-8907-9328. DATE JULY 2007

(ALL DIMENSIONS TO BE CHECKED ON SITE)

WELWYN HATFIELD  
PLANNING  
OFFICE COPY  
12 OCT 2007  
No: 56/07/1301/EA



REAR ELEVATION



PART PLAN (EXISTING)

1:100

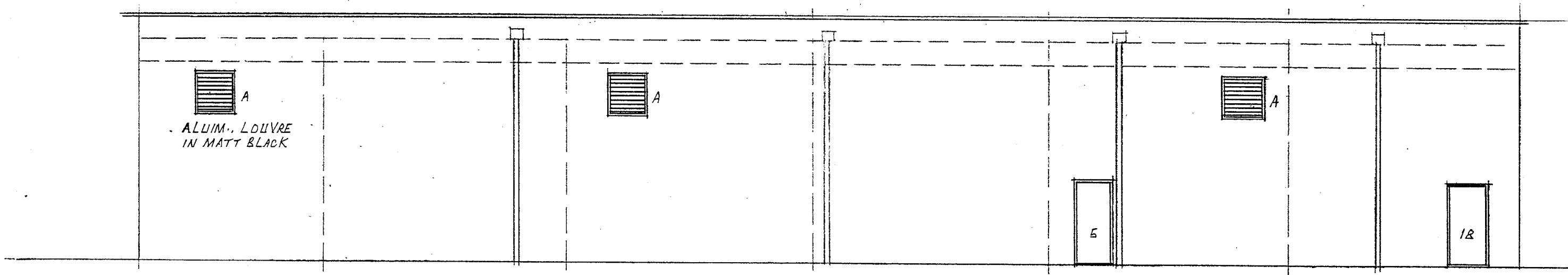
DRWG. No. 6

13 PARKHOUSE COURT, HATFIELD AL10 9RQ

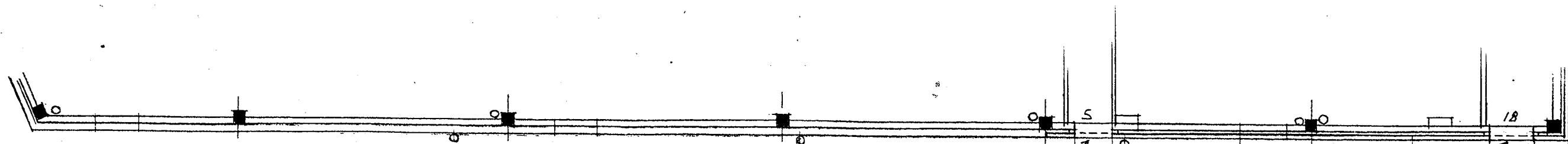
(ALL DIMENSIONS TO BE CHECKED ON SITE)

DRAWN BY MR. M.F. YU (R.I.B.A.) 17 WESTWARD WAY, KENTON, HARROW, MIDDLESEX HA3 0SE. TEL. 020-8907-9328. DATE JULY 2007

WELWYN HATFIELD  
PLANNING  
OFFICE COPY  
12 OCT 2007  
No. 26/01/06/1A



REAR ELEVATION



PART PLAN (PROPOSED)

STEEL ROLLER SHUTTER  
TO BE KEPT OPEN IN BUSINESS HOURS

1:100

STEEL ROLLER SHUTTER  
STRUCTURAL DETAILS &  
COLOUR TO MATCH THE  
EX'G. DOOR OPENING  
No 30