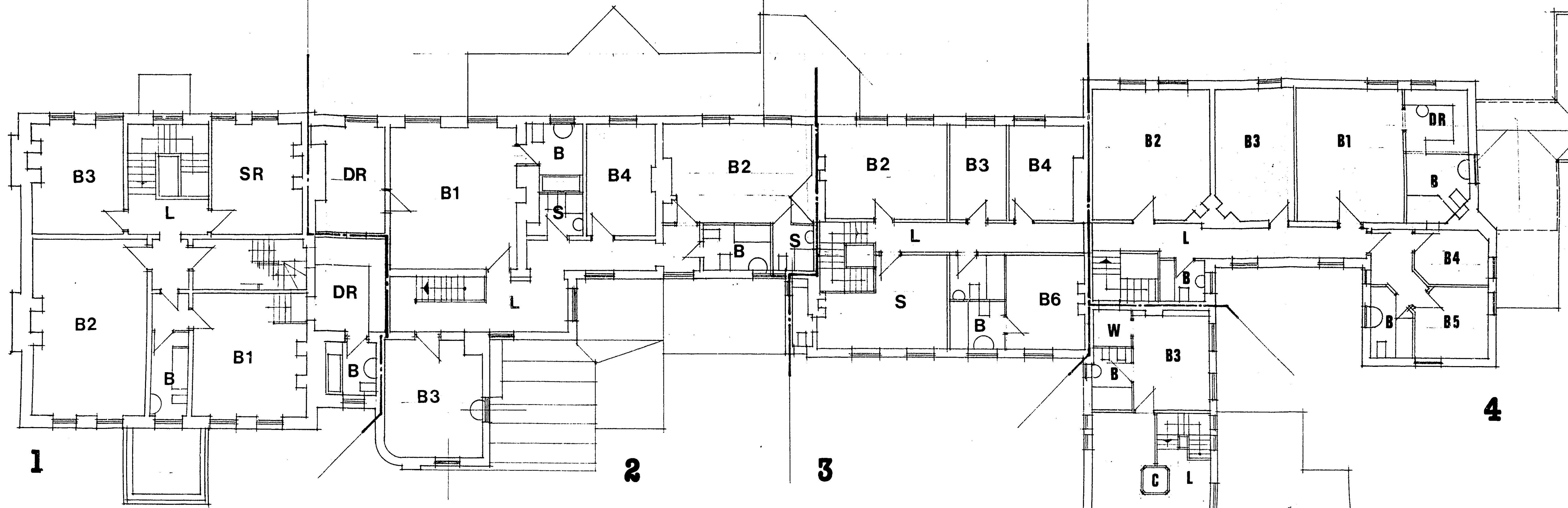
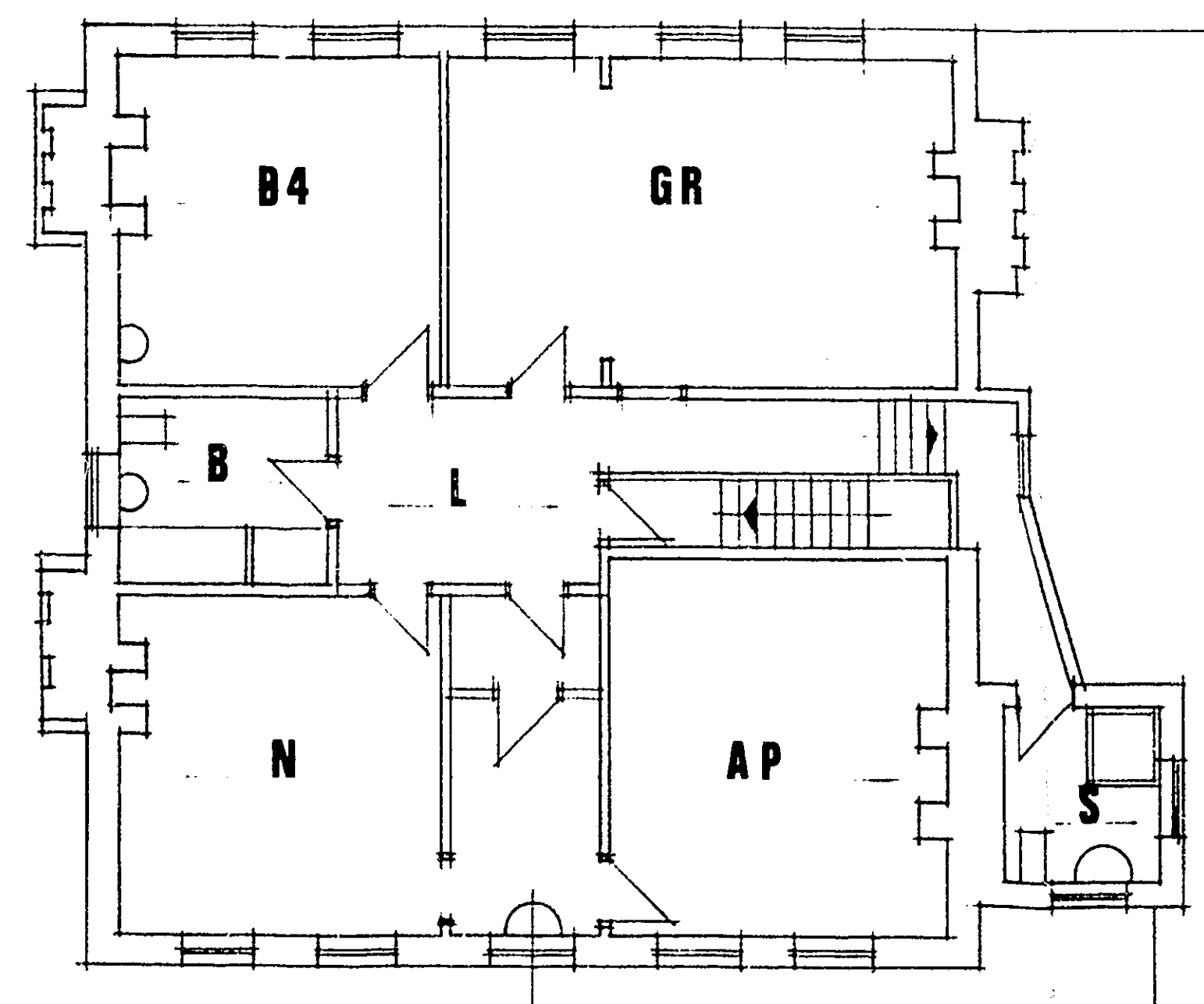


M A I N H O U S E & C O A C H H O U S E

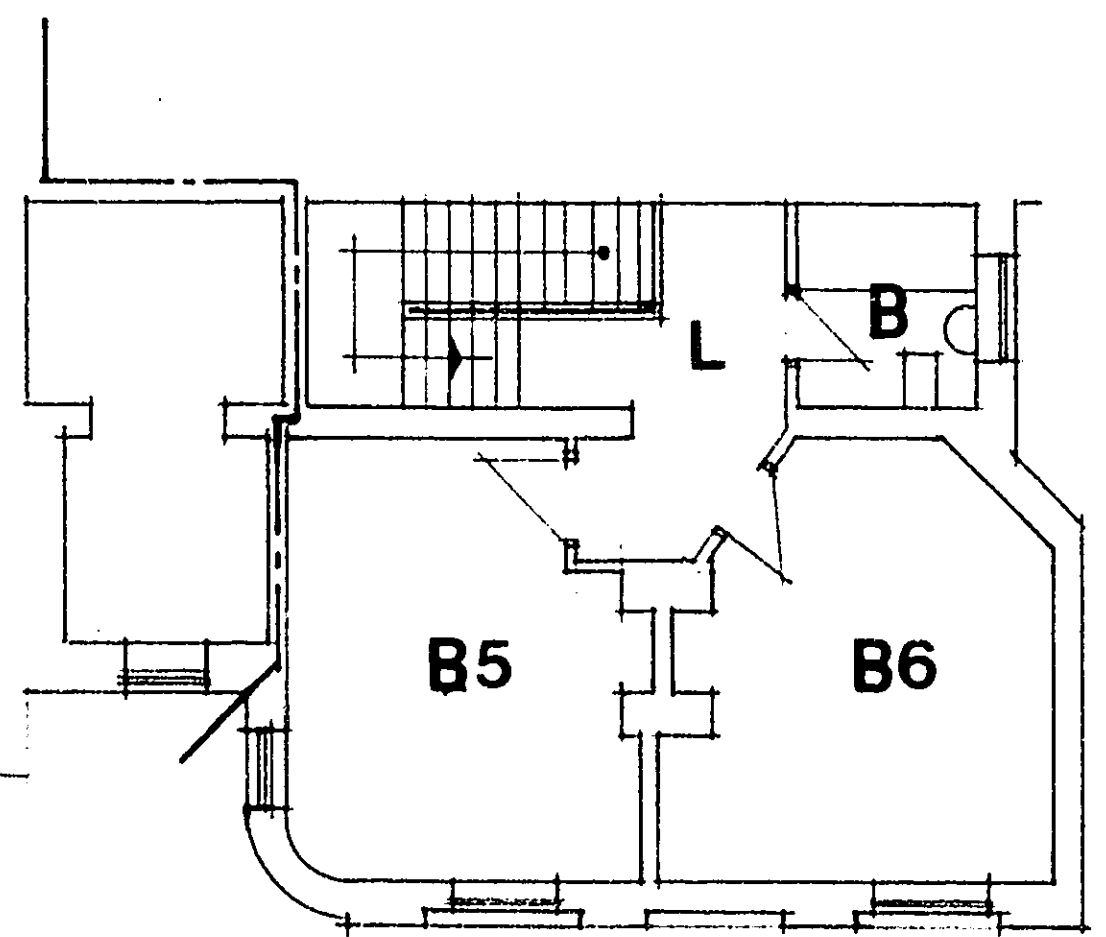
6/568/85



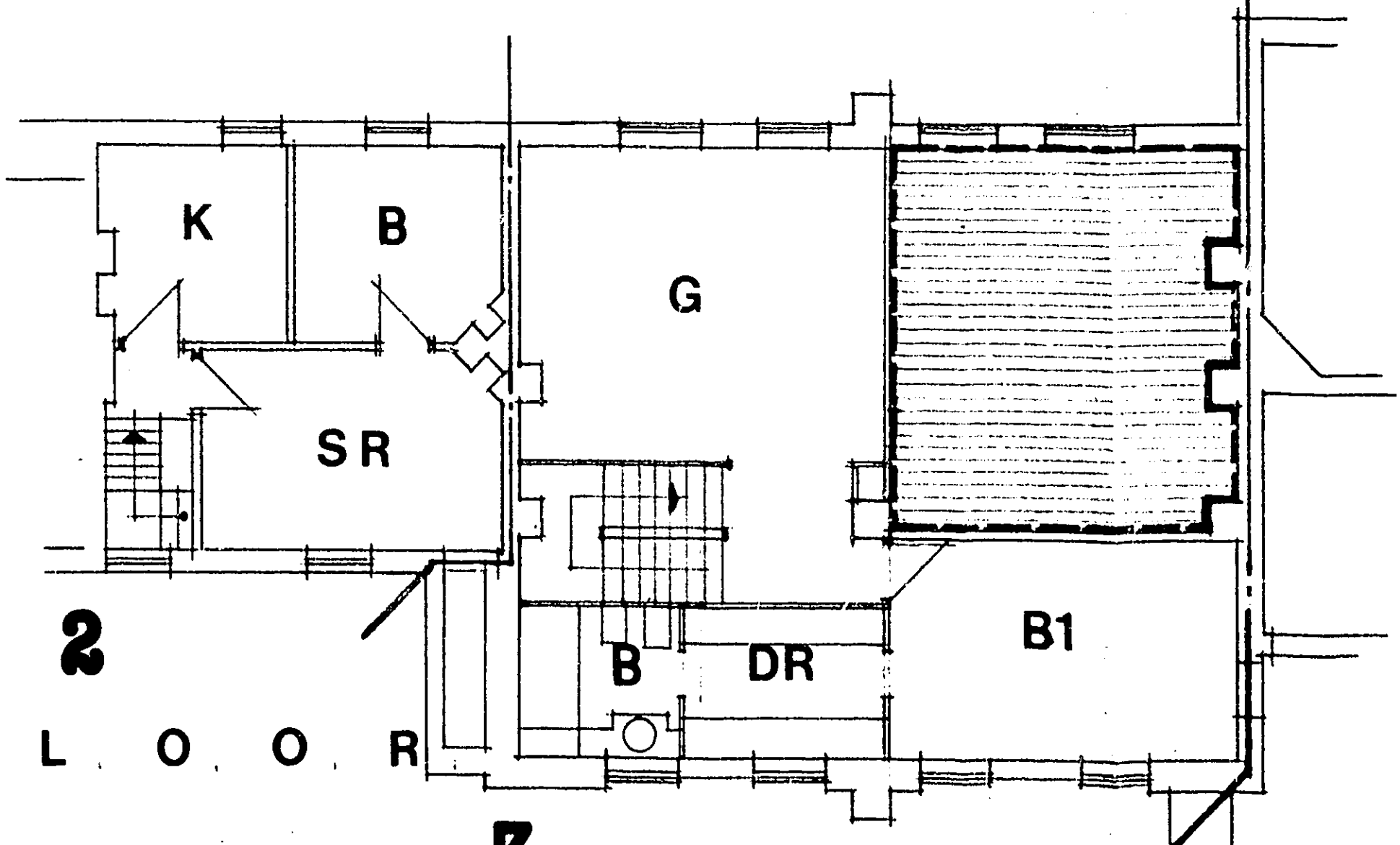
F I R S T F L O O R P L A N



1 T O P F L O O R



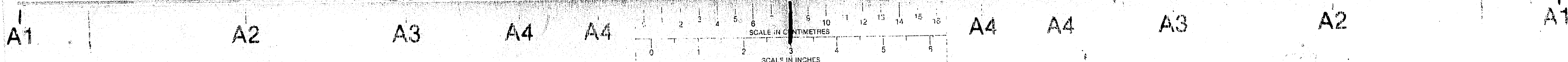
2 M E Z Z A N I N E F L O O R



2 3

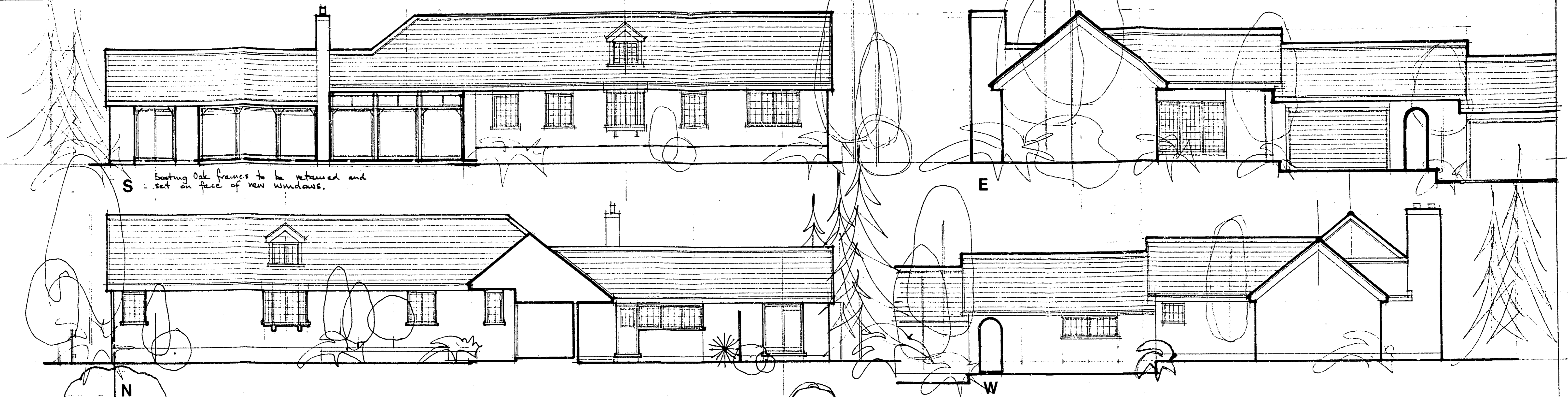
N O R T H A W P L A C E

Scale: 1/4" = 1'-0"
 NP1'S



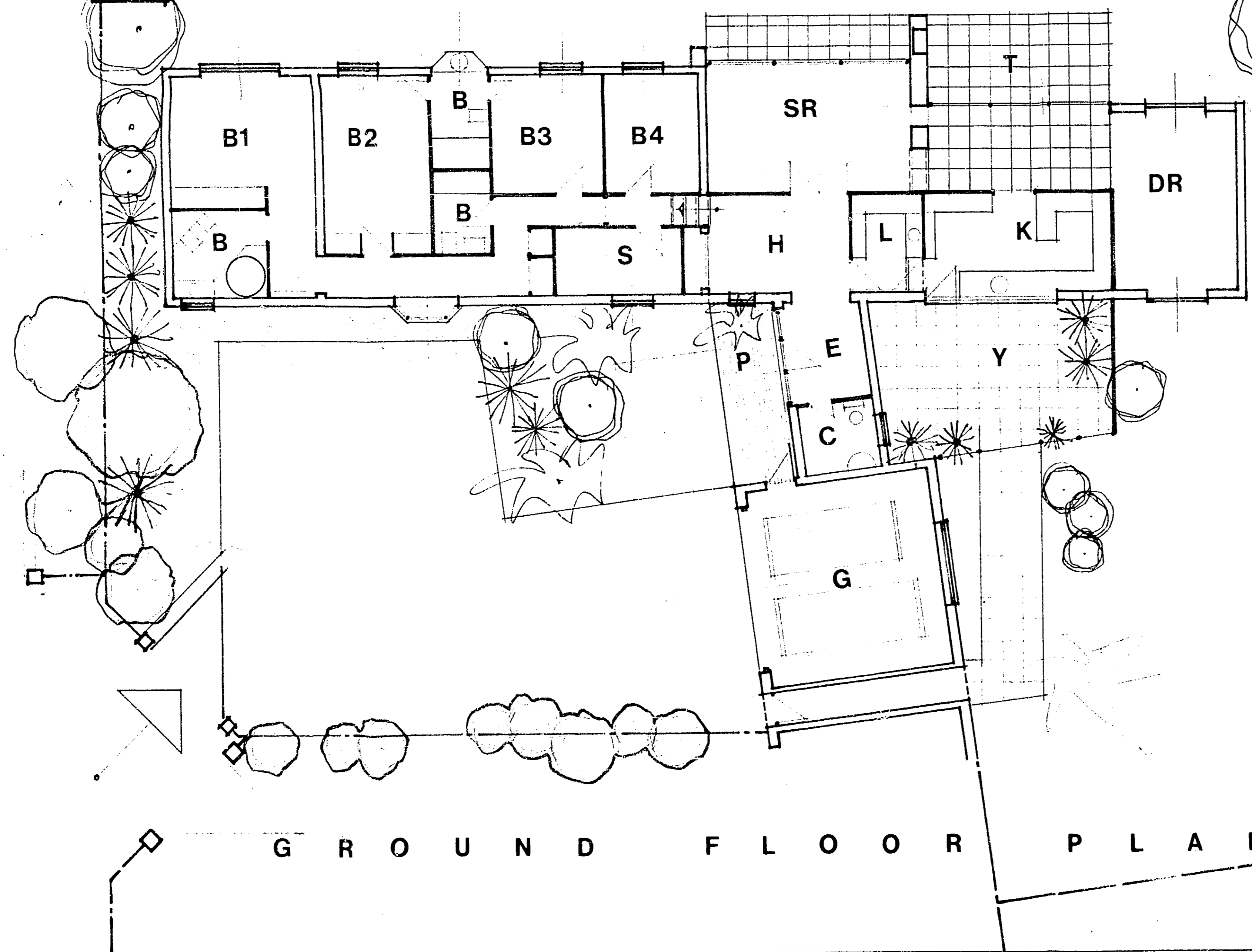
F I V E S C O U R T

6/368/85

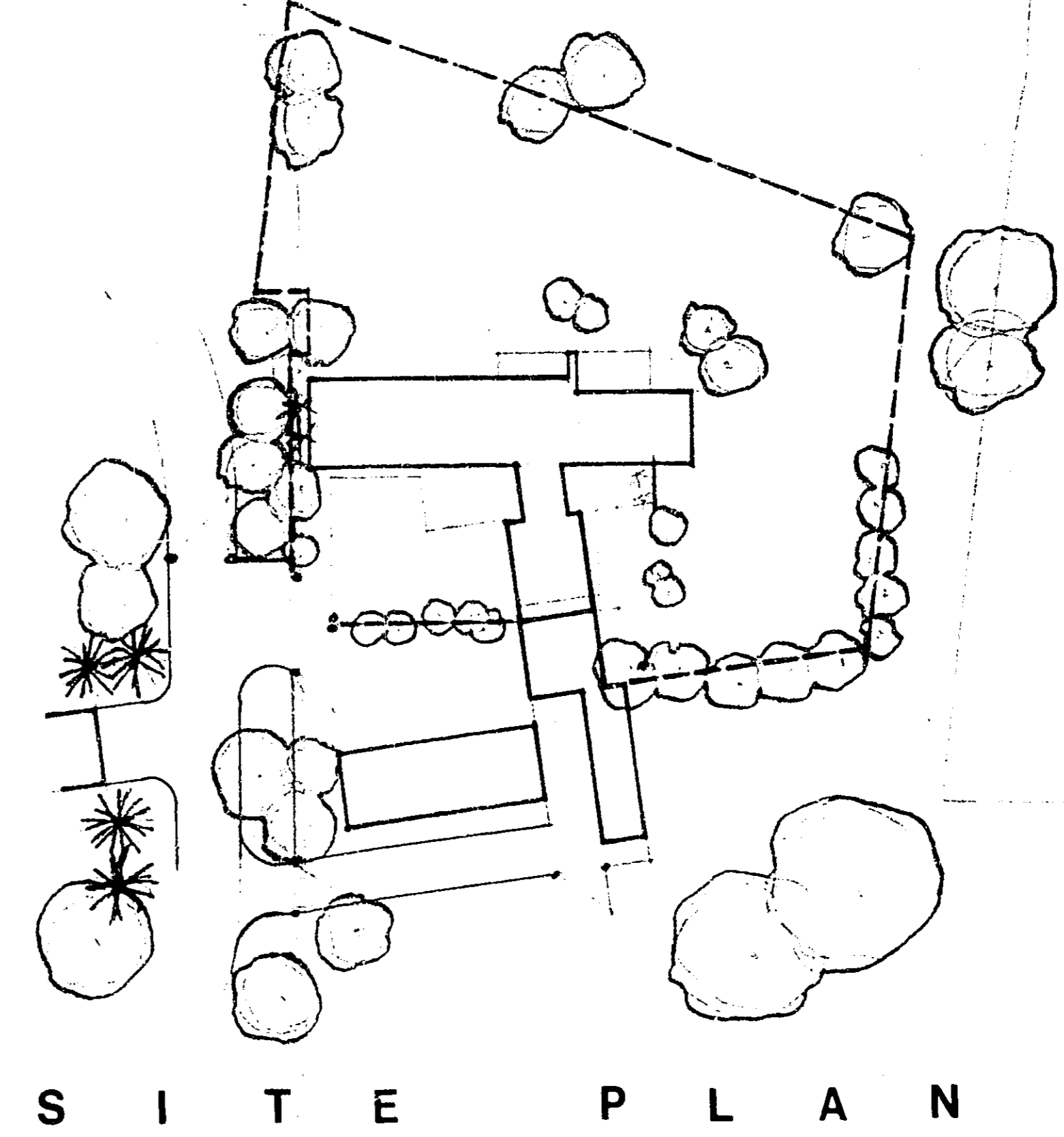


E L E V A T I O N S

Notes.
 All existing materials, roofing tiles, bricks, and timbers to be reused and existing structures to be retained wherever practical.



G R O U N D F L O O R P L A N



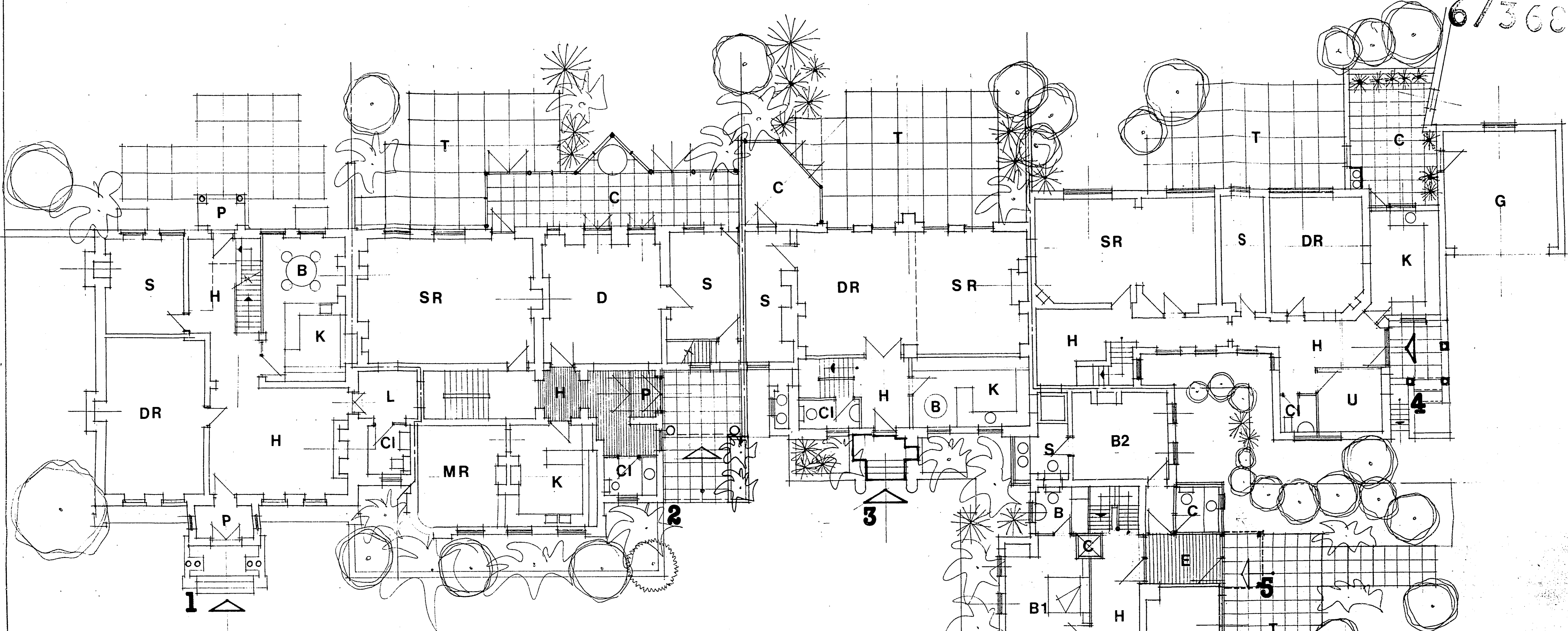
S I T E P L A N

N O R T H A W P L A C E

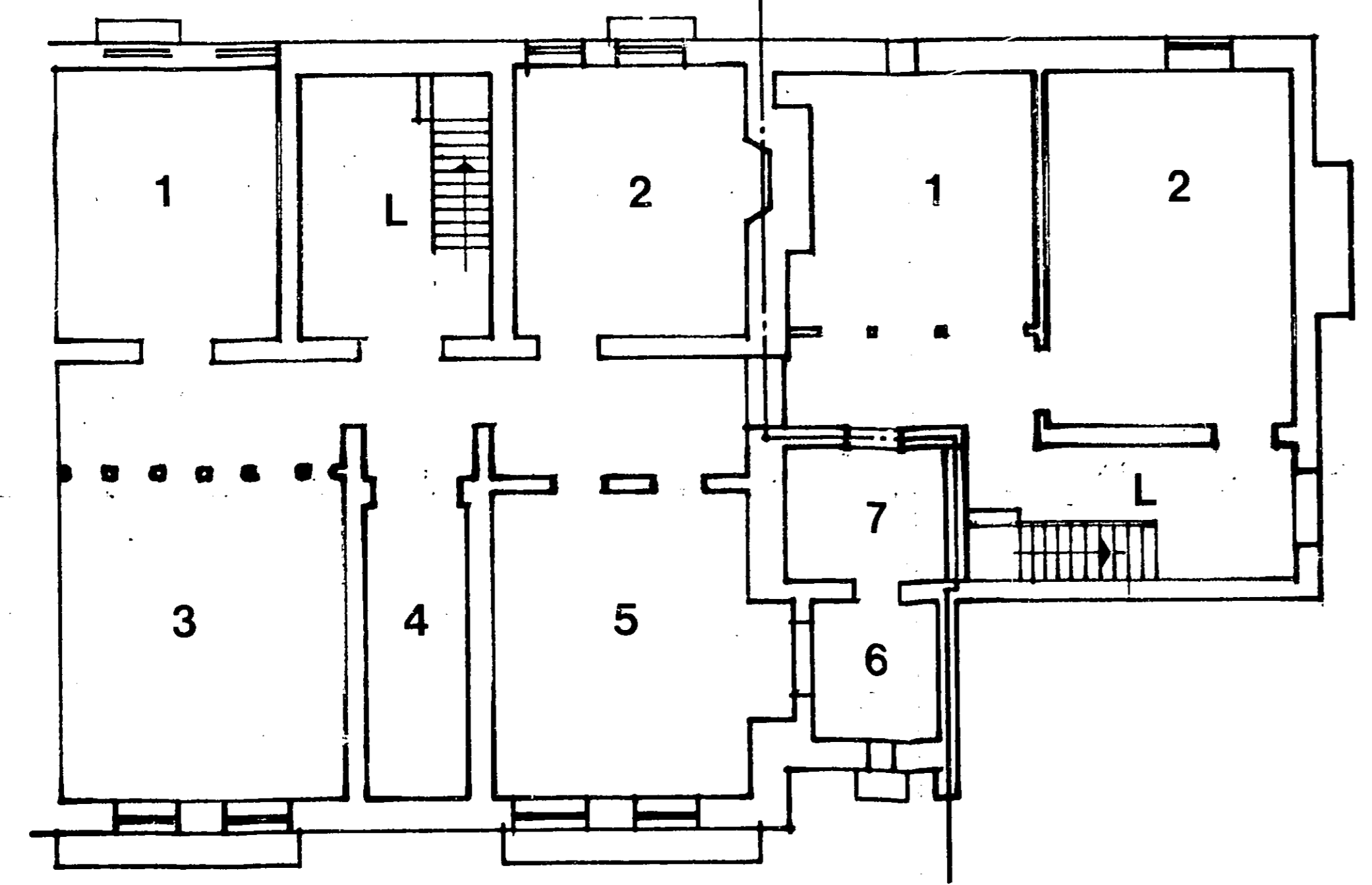
P. D. Hunt & Associates.
 Wood. Close. London. E.2.
 Date. March. 1985.
 Scales. 1/100 = 1" = 40'
NPI'8

M A I N H O U S E & C O A C H H O U S E

6/368/8



G R O U N D F L O O R P L A N



B A S E M E N T P L A N

N O R T H A W P L A C E

P. S. Hunt & Associates
Wood Close, London, E2.
Date: March 1985.
Scale: 1/100.
Drawing Number **NP16**

