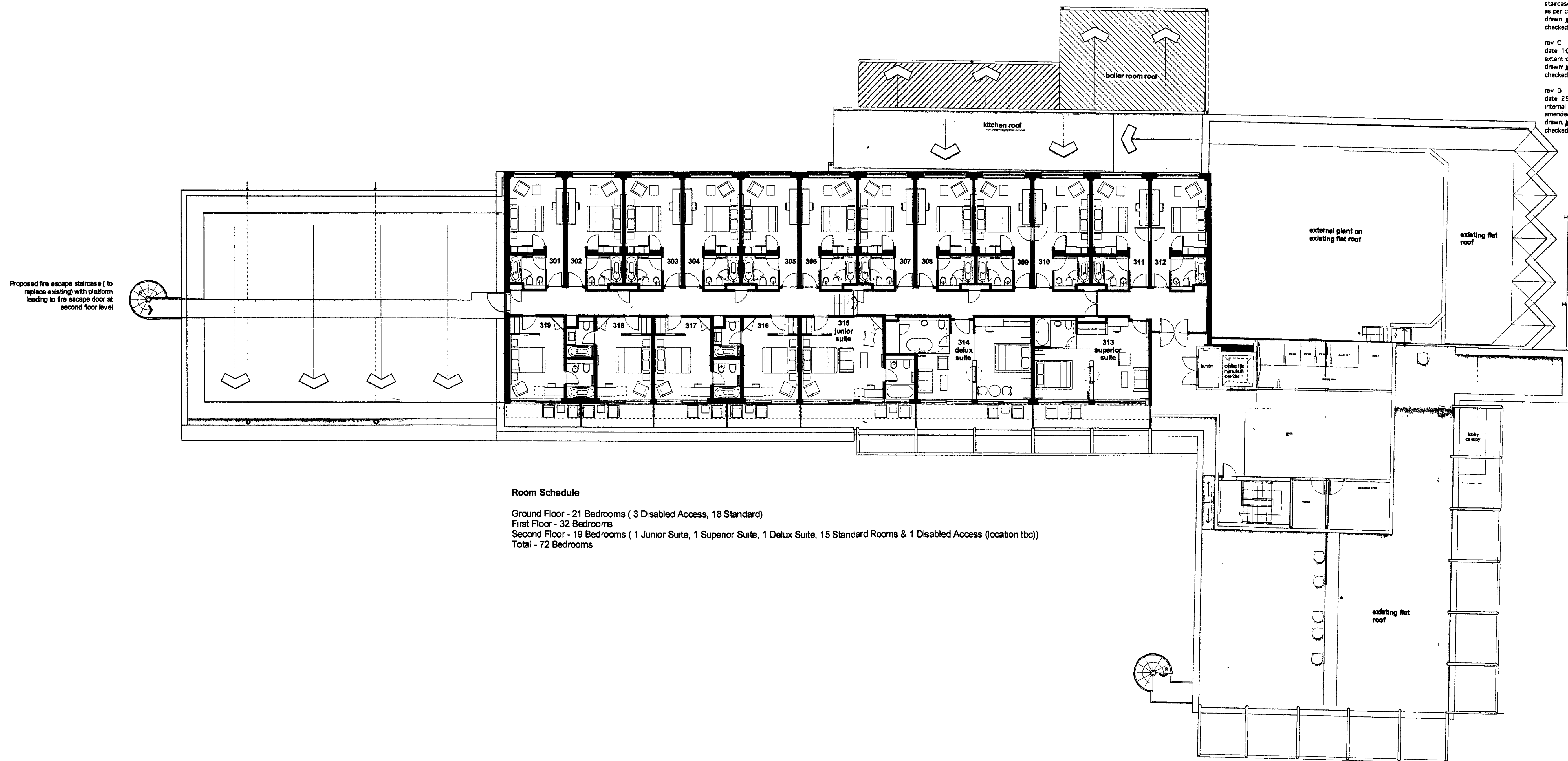


REVISIONS

- rev B
date 18.07.07
staircase repositioned, mix of rooms and suite amended
as per client request
drawn jpg
checked jp
- rev C
date 10.08.07
extent of gym area increased
drawn jpg
checked
- rev D
date 29.08.07
internal layout of gym amended, external roof details
amended
drawn jp
checked



Proposed fire escape staircase (to replace existing) with platform leading to fire escape door at second floor level

Room Schedule

Ground Floor - 21 Bedrooms (3 Disabled Access, 18 Standard)
 First Floor - 32 Bedrooms
 Second Floor - 19 Bedrooms (1 Junior Suite, 1 Superior Suite, 1 Deluxe Suite, 15 Standard Rooms & 1 Disabled Access (location tbc))
 Total - 72 Bedrooms

PLANNING DEPARTMENT
OFFICE COPY

16 SEP 2010
12:17:0

PLANNING

Beales Hotels
Extension of Beales Hotel Hatfield

Proposed Second Floor

scale 1:125 A05.229.SK.007.D

drawn JP checked HG date May 07
© the copyright of this drawing is vested with The Design Buro and must not be copied or reproduced without written consent. scaled dimensions cannot be relied upon. confirm all specifications must use actual site dimensions.