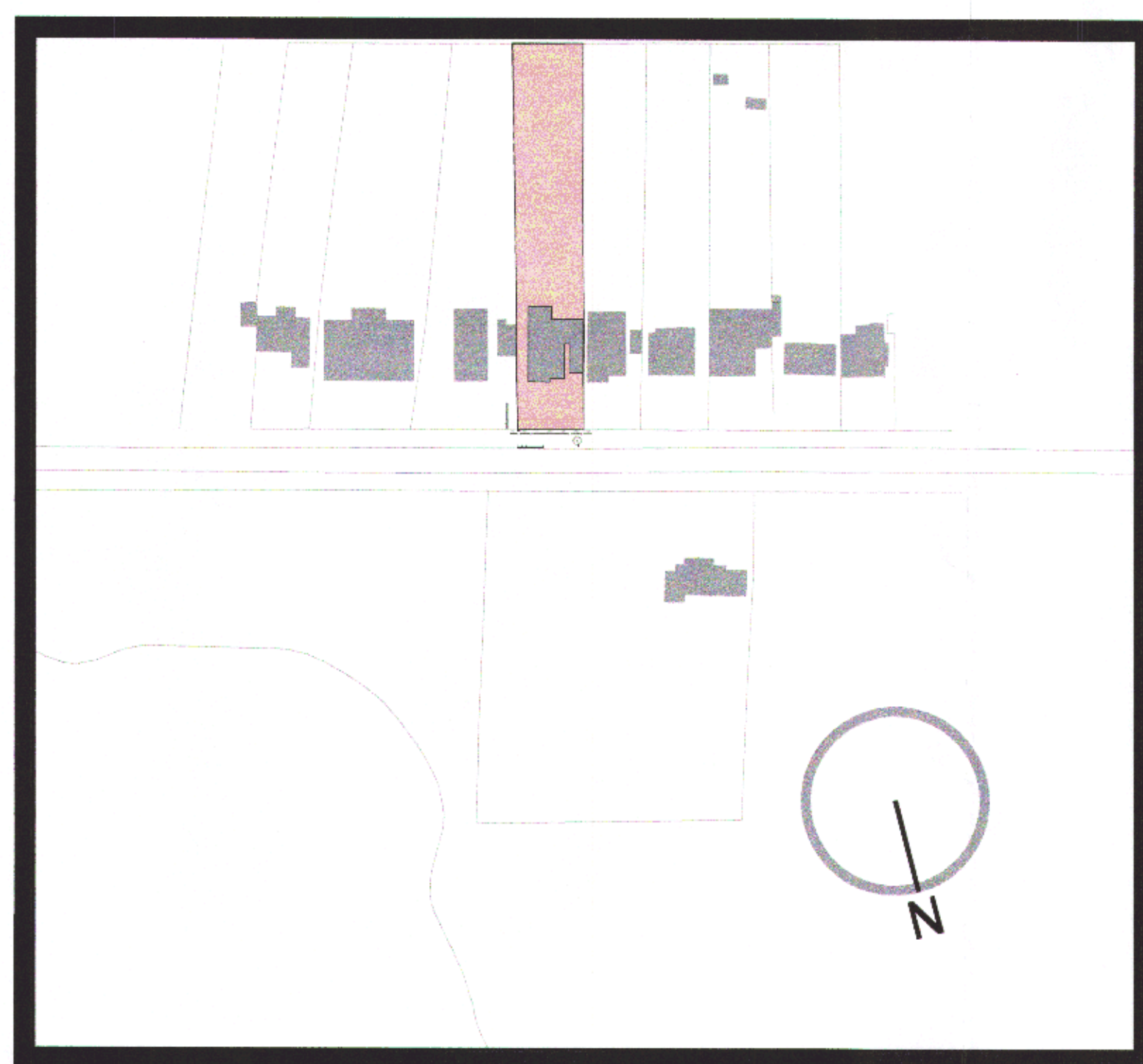


painted black iron railings  
 10mm diameter rods and  
 10x40mm flat section top and  
 bottom  
 brick on edge  
 flat sided stone pier cap in  
 portland grey  
 440 square brickwork piers  
 automated steel gates painted  
 black;  
 box section welded frame with  
 10mm rods spaced at 100mm  
 centres

bricks to be ibstock TONBRIDGE  
 HANDMADE HEATHER GREY  
 spaced diamond pattern laid  
 proud of main wall  
 215 solki brickwork wall  
 constructed in Flemish bond  
 Bucket Handle Pointing



P2	plans added + scale bars	17.11.11
REV	DESCRIPTION	DATE
67, RIDGEWAY, CUFFLEY HERTFORDSHIRE EN6		
PROPOSED NEW FRONT WALL AND GATES		
Scale @ A1	1:50, 1:200	
Created	OCT 2011	
Purpose of Issue	PLANNING	

PLANNING DEPARTMENT  
 OFFICE COPY  
 18 NOV 2011  
 2011/2513

Open Architecture Architecture  
 Building Surveying  
 Project Management  
 Interior design

45-50 Royal Parade Mews www.openarc.co.uk  
 Blackheath Village T +44 20 8318 9700  
 London / SE3 0TN F +44 20 8313 0990

Job Reference Drawing Number Rev  
 09033 500 P2