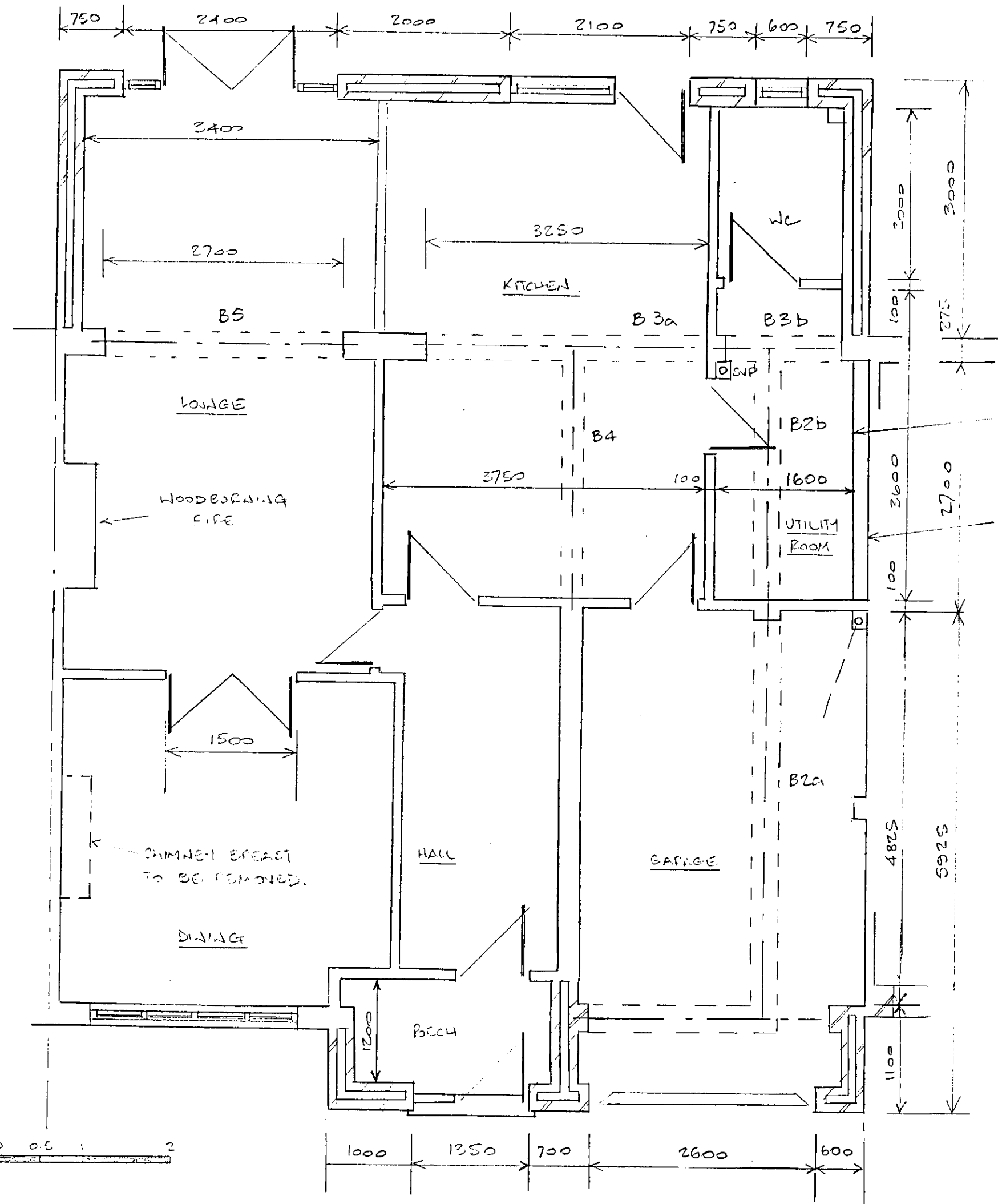


REV 'B' UPDATED AFTER DISCUSSIONS WITH W+HBC PLANNING DEPT.



DRY LINING WITH INSULATION.  
BOUNDARY LINE

BEAMS	
B1	2/254 x 102 UB 25
B2a	2/254 x 102 UB 25
B2b	2/203 x 102 UB 23
B3a	2/254 x 102 UB 25
B3b	2/203 x 102 UB 23
B4	2/203 x 102 UB 23
B5	2/203 x 102 UB 23

AMENDMENT  
- 8 JAN 2011  
NO: 62010/2772

299 ST ALBANS RD WEST  
 • COLORED GROUND FLOOR PLAN  
 • OCTOBER 2010 - 10/05 'B'  
 REV 'A' 17.11.10  
 REV 'B' 29.12.10.

SCALE 1:50  
 © A3