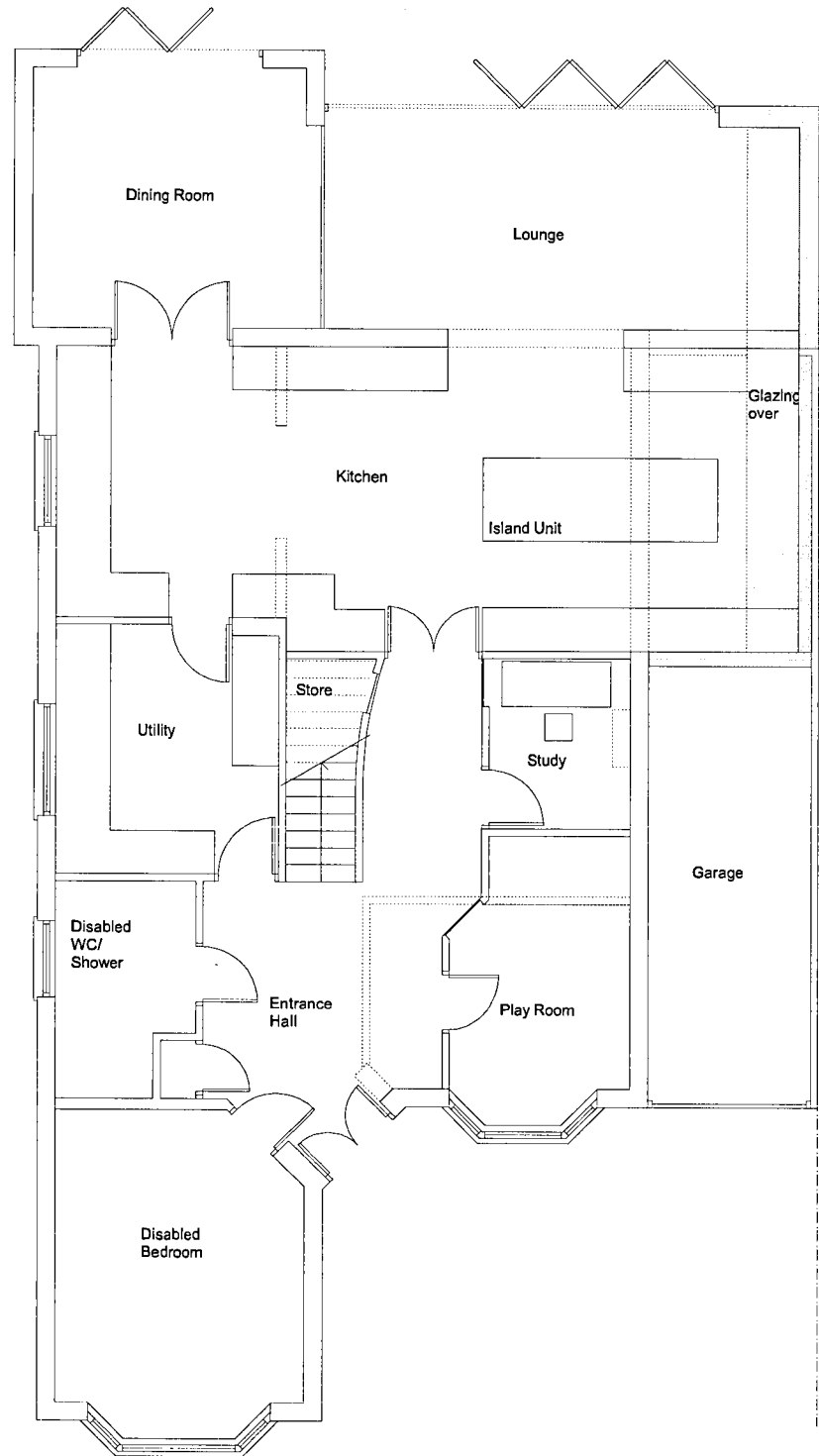
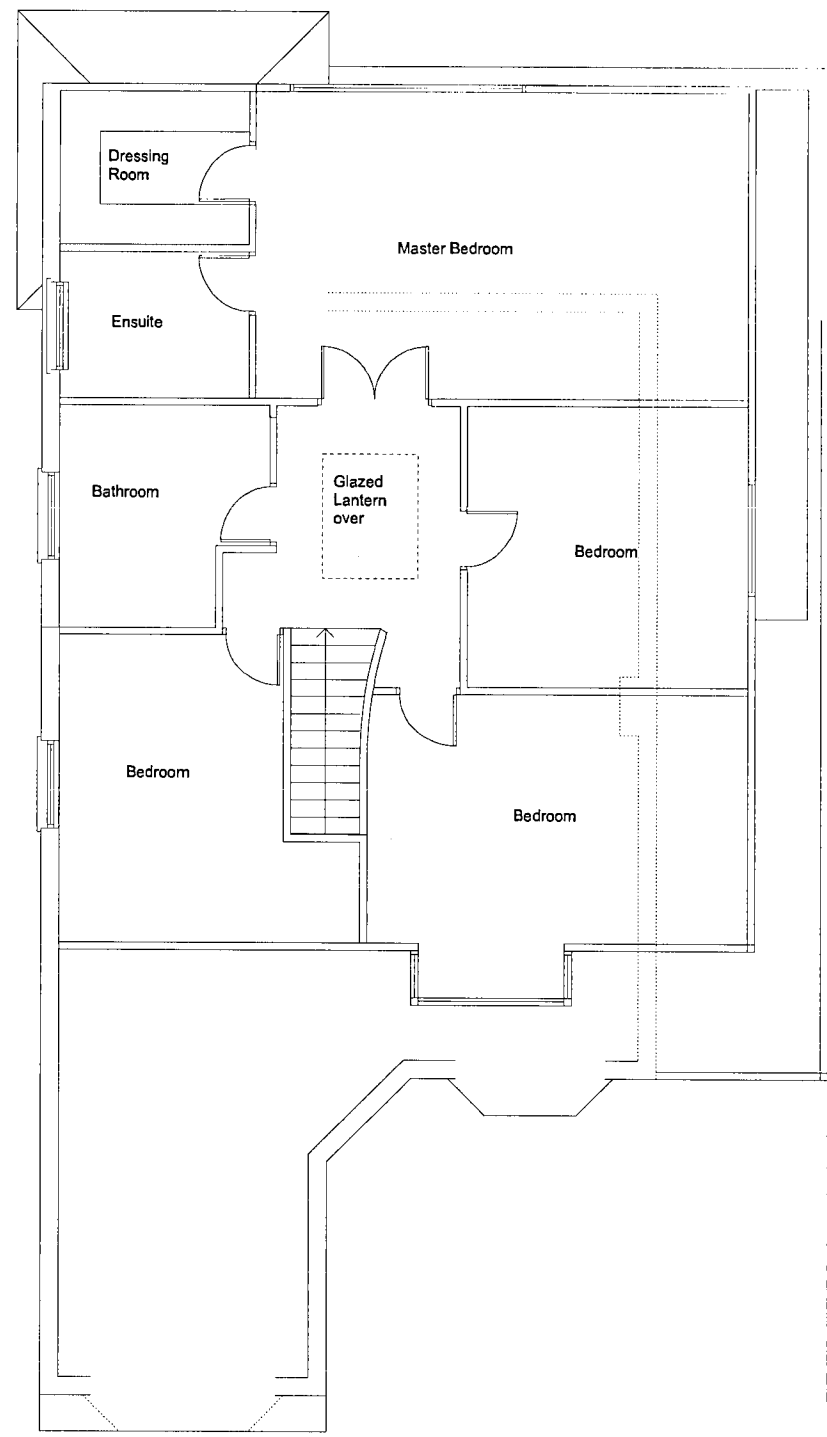


PROPOSED EXTENSIONS AND ALTERATIONS AT 17 KINGSMEAD, CUFFLEY, HERTS.



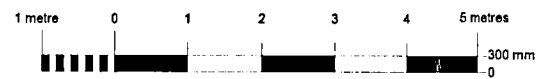
GROUND FLOOR PLAN 1:100



FIRST FLOOR PLAN 1:100

2013/2202
 PLANNING
 DEPARTMENT
 06 NOV 2013

1:50 @ A1



PLANNING