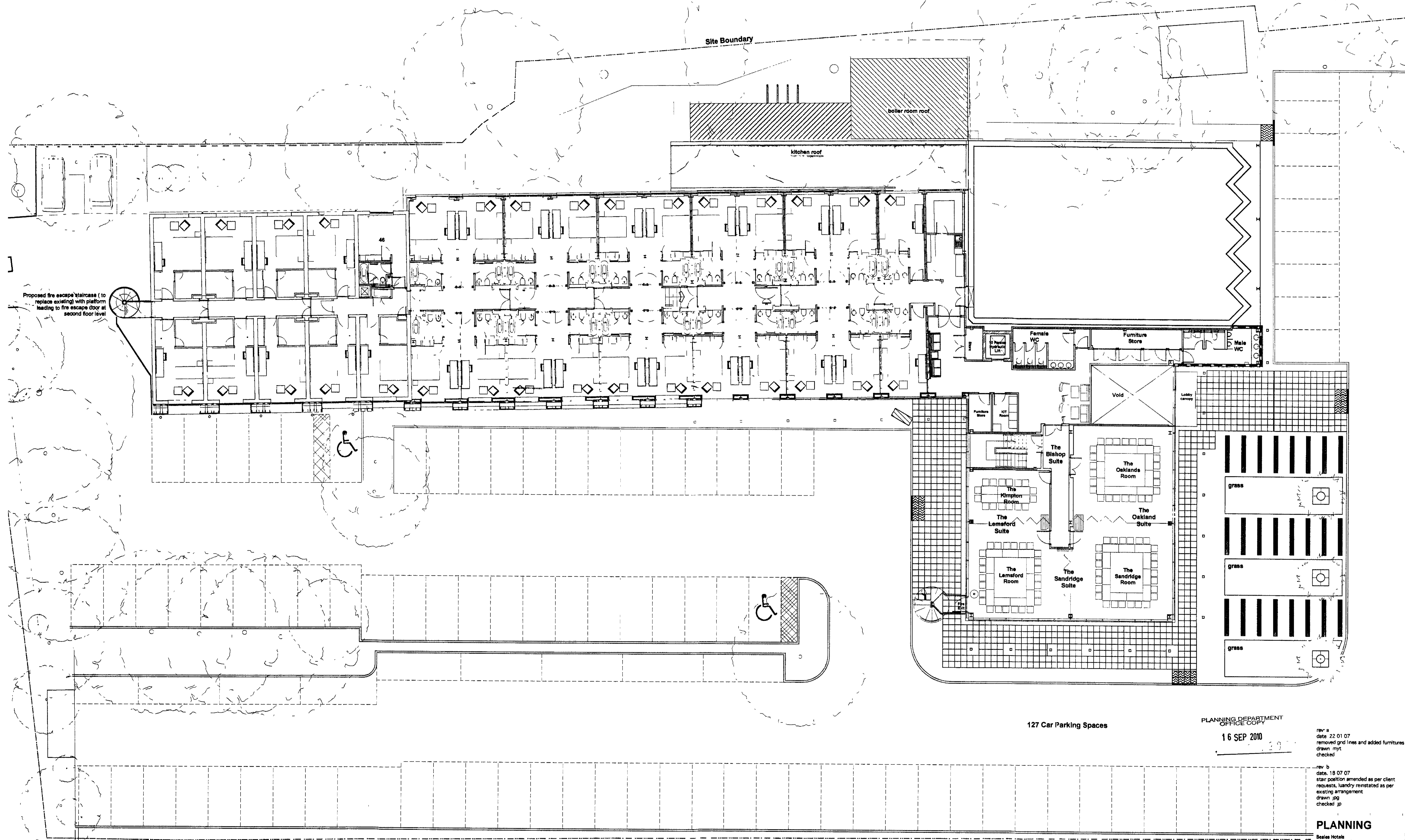
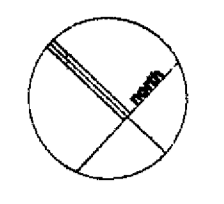


Room Schedule
 Ground Floor - 21 Bedrooms (3 Disabled Access, 18 Standard)
 First Floor - 32 Bedrooms
 Second Floor - 16 Bedrooms (5 Suites, 11 Standard)
 Total - 69 Bedrooms



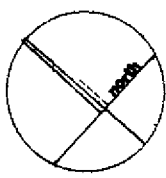
127 Car Parking Spaces

PLANNING DEPARTMENT
 OFFICE COPY
 16 SEP 2010

rev. a
 date: 22 01 07
 removed grid lines and added furnitures
 drawn: myt
 checked: JP

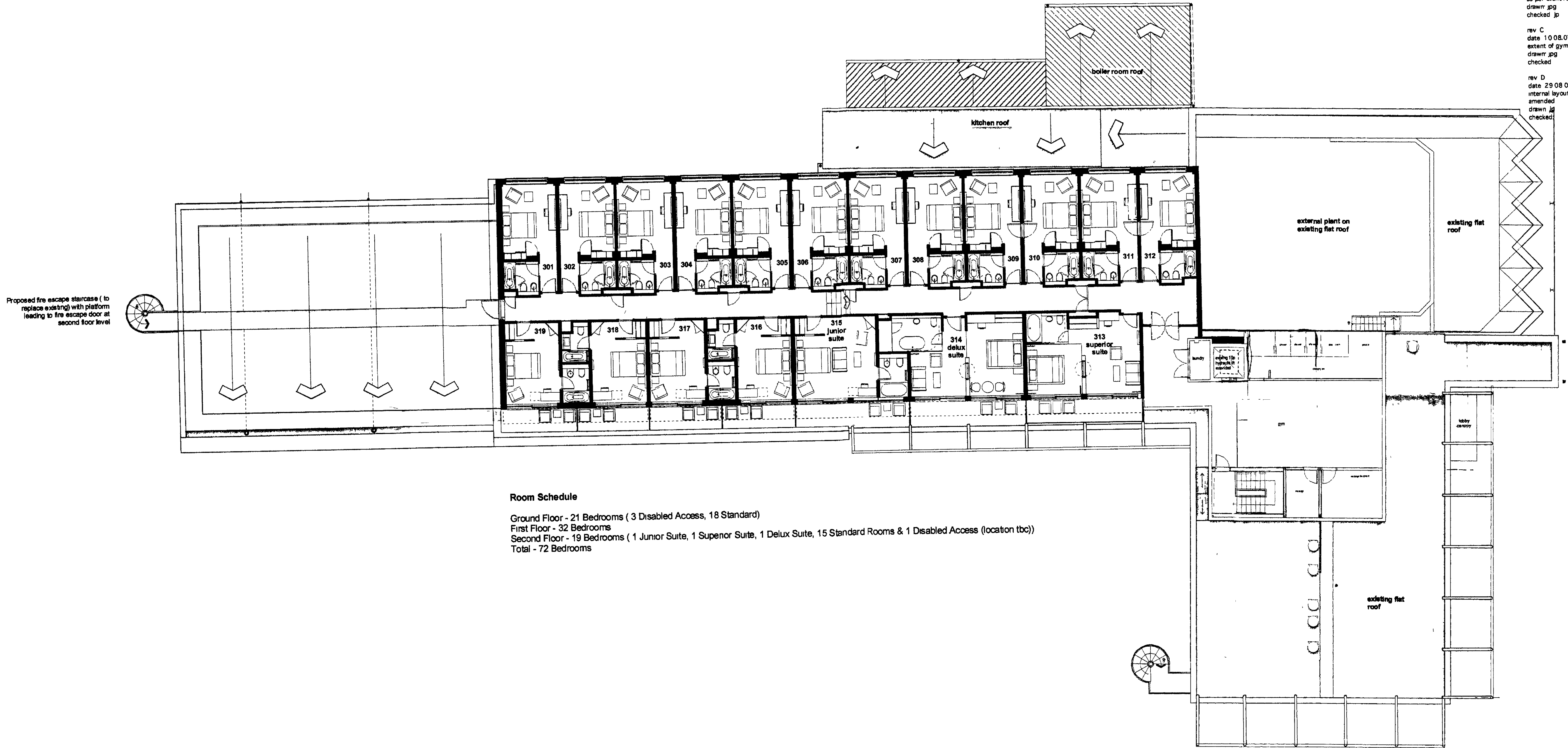
rev. b
 date: 18 07 07
 stair position amended as per client
 requests, laundry reinstated as per
 existing arrangement
 drawn: jgg
 checked: JP

PLANNING
 Beales Hotels
 Extension of Beales Hotel Hatfield
 Proposed First Floor Layout
 scale: 1:125 A05 229.P 006 B
 drawn: MYT checked: JP date: Jan 07
© the copyright of this drawing is vested with The Beales Hotel and will not be copied or reproduced without the prior written consent of the Beales Hotel.



REVISIONS

- rev B
date 18 07 07
staircase repositioned, no. of rooms and suite amended as per client request
drawn: jg
checked: jp
- rev C
date 10 08 07
extent of gym area increased
drawn: jg
checked:
- rev D
date 29 08 07
internal layout of gym amended, external roof details amended
drawn: jg
checked:



Room Schedule

Ground Floor - 21 Bedrooms (3 Disabled Access, 18 Standard)
 First Floor - 32 Bedrooms
 Second Floor - 19 Bedrooms (1 Junior Suite, 1 Superior Suite, 1 Delux Suite, 15 Standard Rooms & 1 Disabled Access (location tbc))
 Total - 72 Bedrooms

PLANNING DEPARTMENT
OFFICE COPY

16 SEP 2010

PLANNING

Beales Hotels
Extension of Beales Hotel Hatfield

Proposed Second Floor

scale 1:125 A05.229.SK.007.D

drawn JP checked HG date May 07

© the copyright of this drawing is vested with The Design Buro and must not be copied or reproduced without written consent. Actual dimensions cannot be relied upon. Confirmed on associated contract must use actual site dimensions.