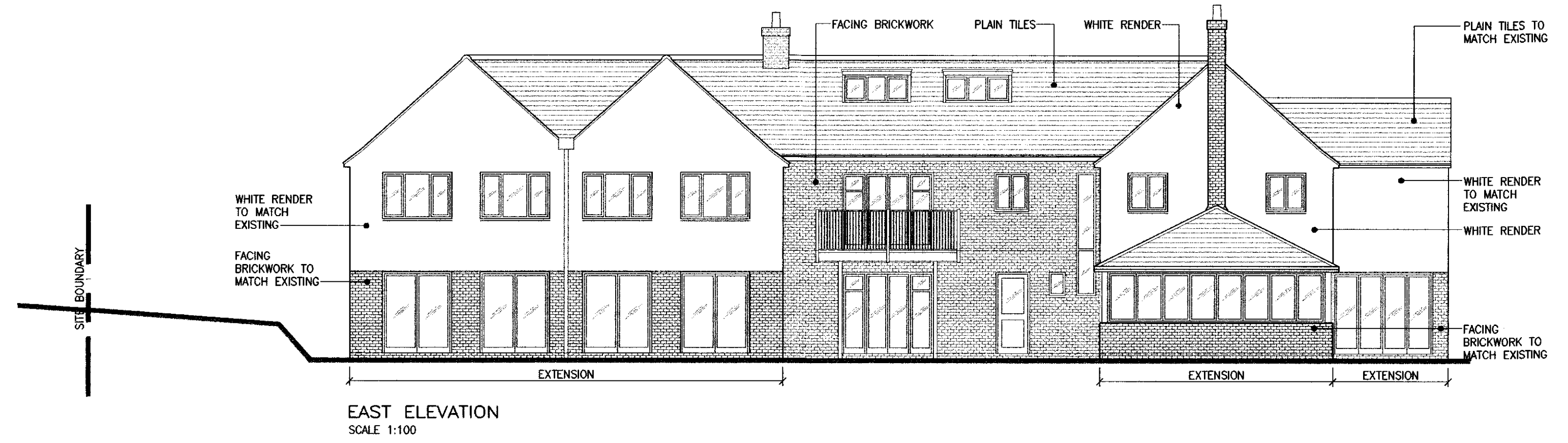
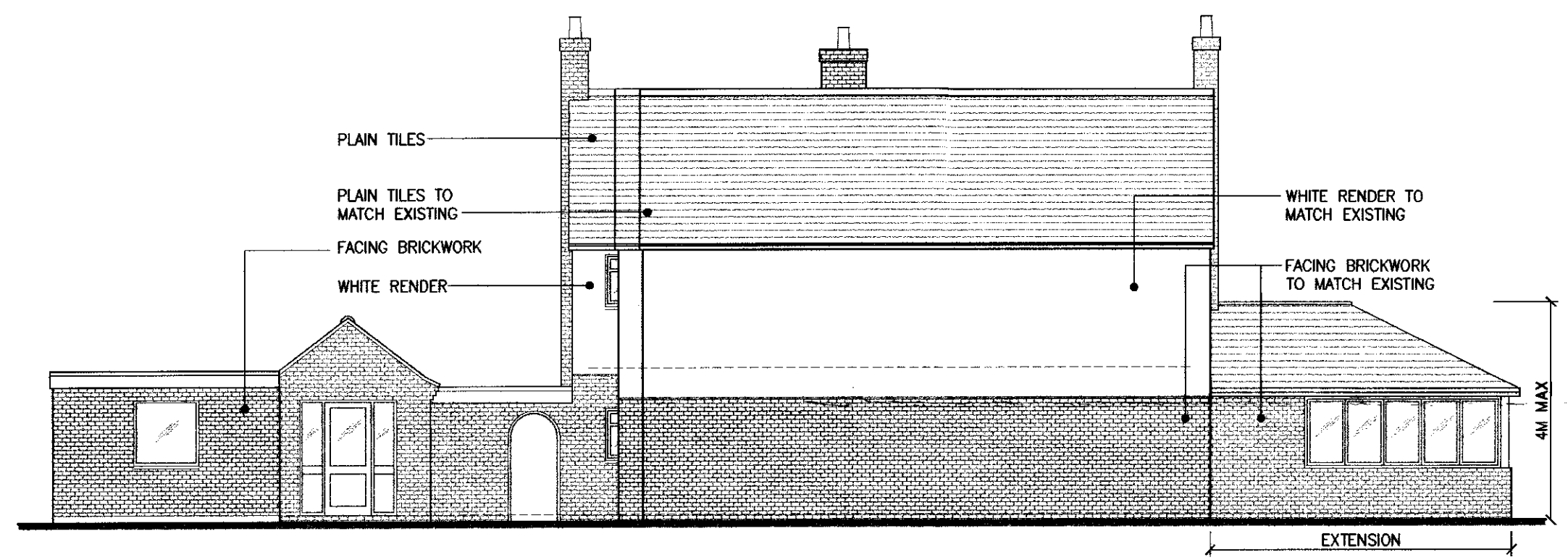


WEST ELEVATION
SCALE 1:100

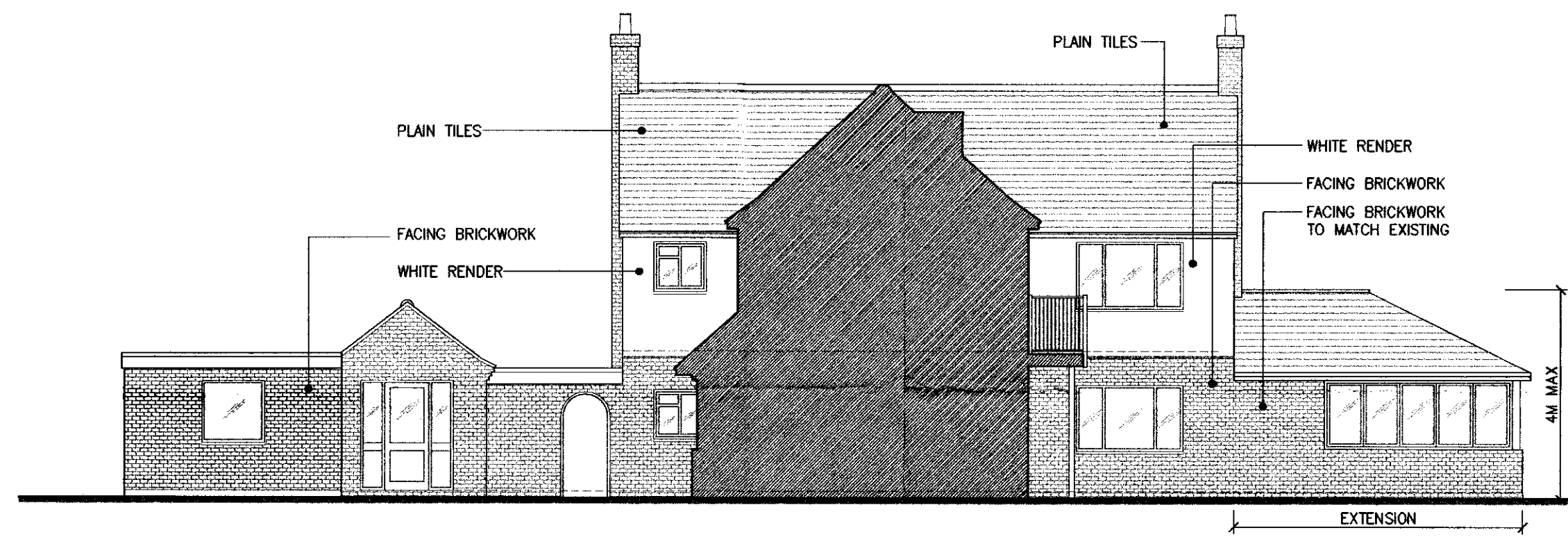


EAST ELEVATION
SCALE 1:100

21 FEB 2011
2011/299



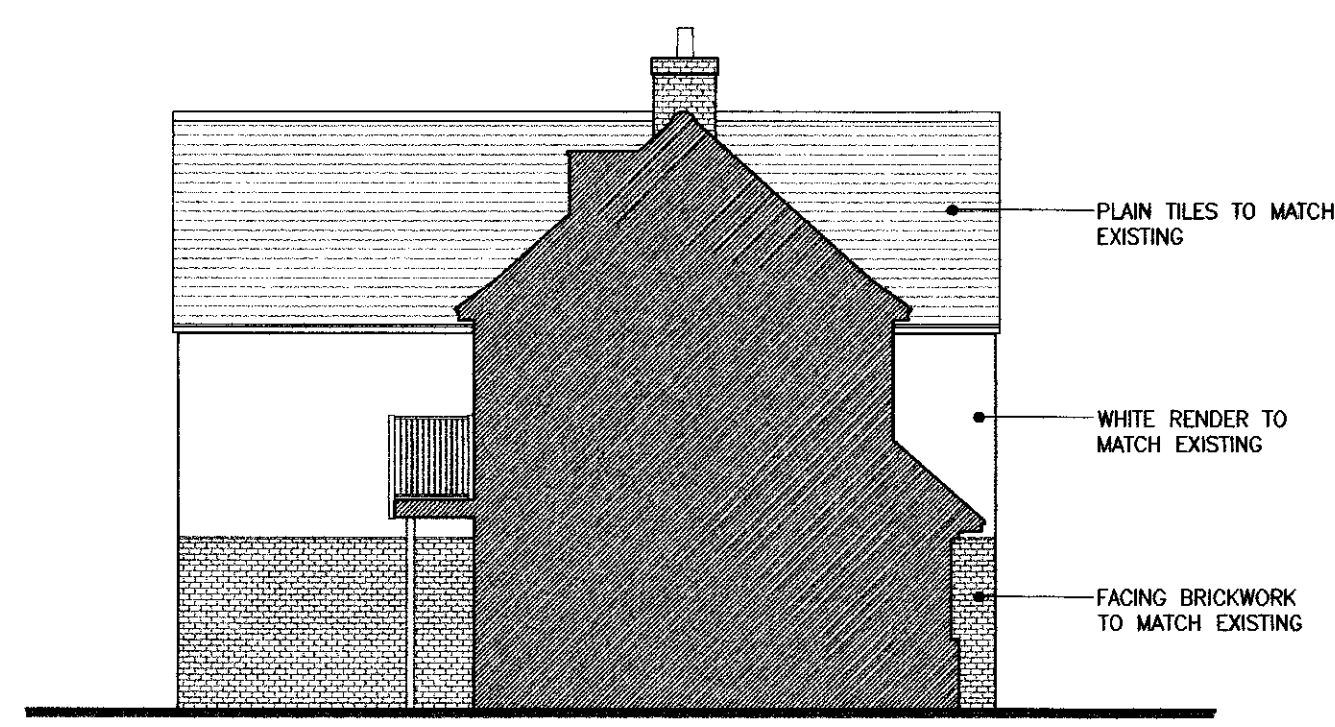
SOUTH ELEVATION A
SCALE 1:100



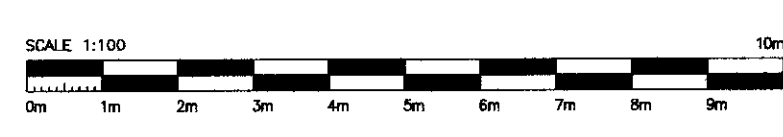
SOUTH ELEVATION B
SCALE 1:100



NORTH ELEVATION C
SCALE 1:100



NORTH ELEVATION D
SCALE 1:100



REV	DATE	DESCRIPTION
-	DD.MM.YY	REVISION NOTE

WOODLANDS
SCHOOL ROAD, POTTERS BAR
HERTFORDSHIRE, EN6 1JW

PROPOSED ELEVATIONS

mcdonaldarchitects

United House | North Road | London | N7 9DP | t +44 (0)20 7607 8836 | f +44 (0)20 7609 6464

DRAWN	CHECKED	DATE	SCALE
AAW		JAN 2011	1:100@A1
NUMBER		1059-012	REVISION