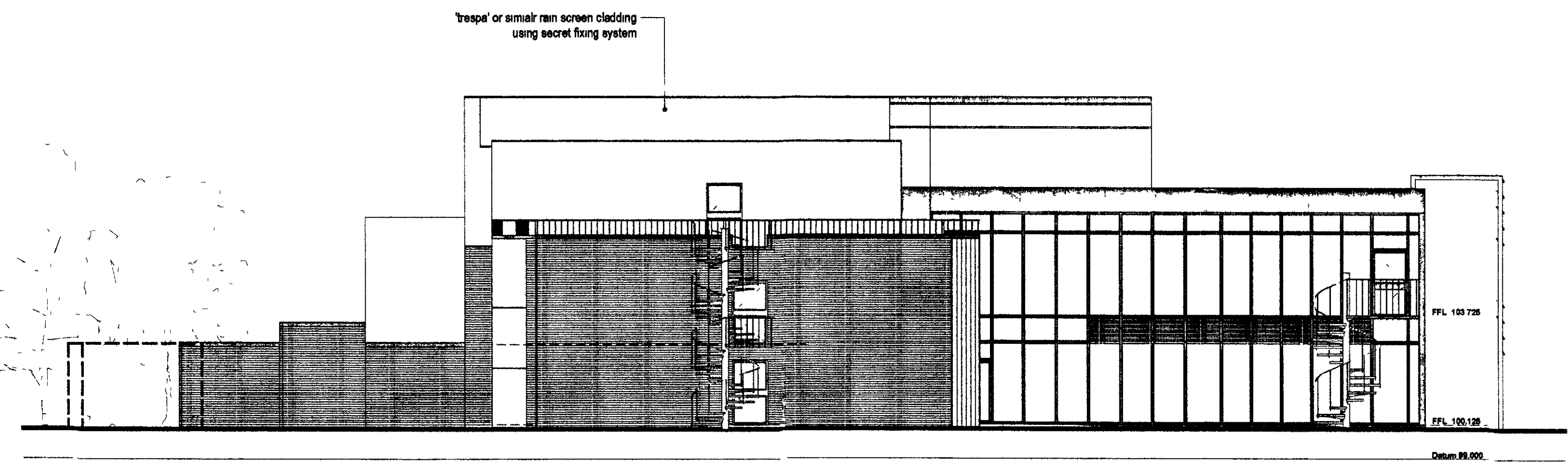
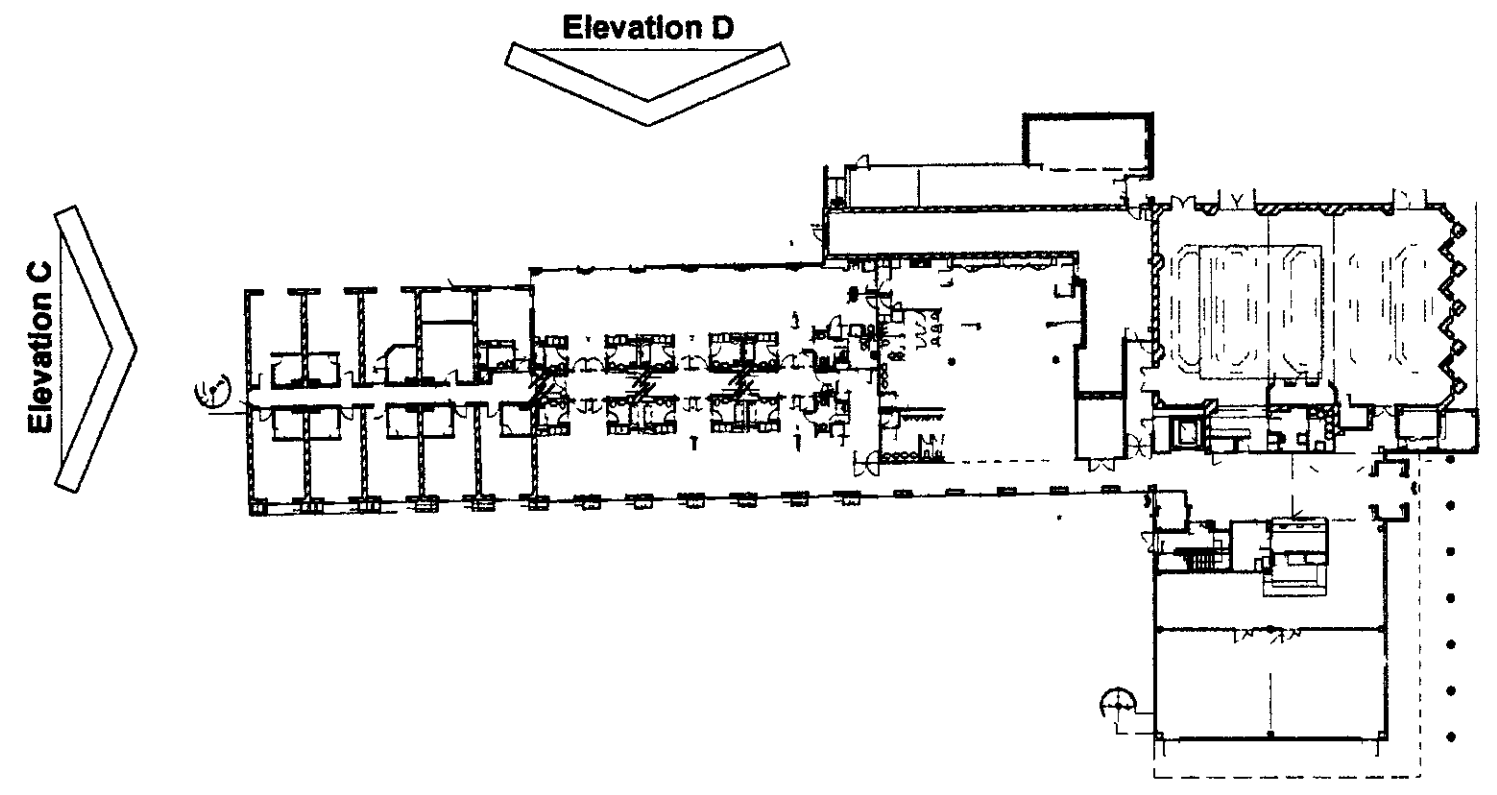


notes

revisions

rev a  
date: 18 07 07  
second floor ffi raised by 215mm(upper section) & 185mm (lower section), parapet heights amended as a result, extent of new build amended to reflect revised position of extended stair from first floor to second floor on elev C, window size amended to reflect internal changes to room type elev D, side elevation cladding material changed from timber to 'trespa', rear elevation cladding material changed from brick to 'trespa', escape stair on elev C&D removed  
drawn .jpg  
checked.

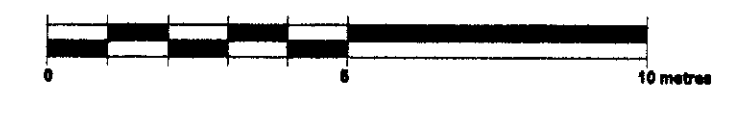
rev b  
date: 10 08 07  
extent of gym elevation revised to reflect increase in size on elev D  
drawn .jpg  
checked



Proposed Side Elevation  
Elevation C



Proposed Rear Elevation  
Elevation D



PLANNING DEPARTMENT  
OFFICE COPY

16 SEP 2010  
2 5 17 07

PLANNING

Beales Hotels  
Extension of Beales Hotel, Hatfield  
Proposed Elevations C and D

scale 1.125 at A1 A05 229 P.009 B  
drawn KW checked date 10 05  
© the copyright of this drawing is vested with The Design Buro and shall not be re-used or reproduced without written consent. All rights reserved. Printed in Great Britain.