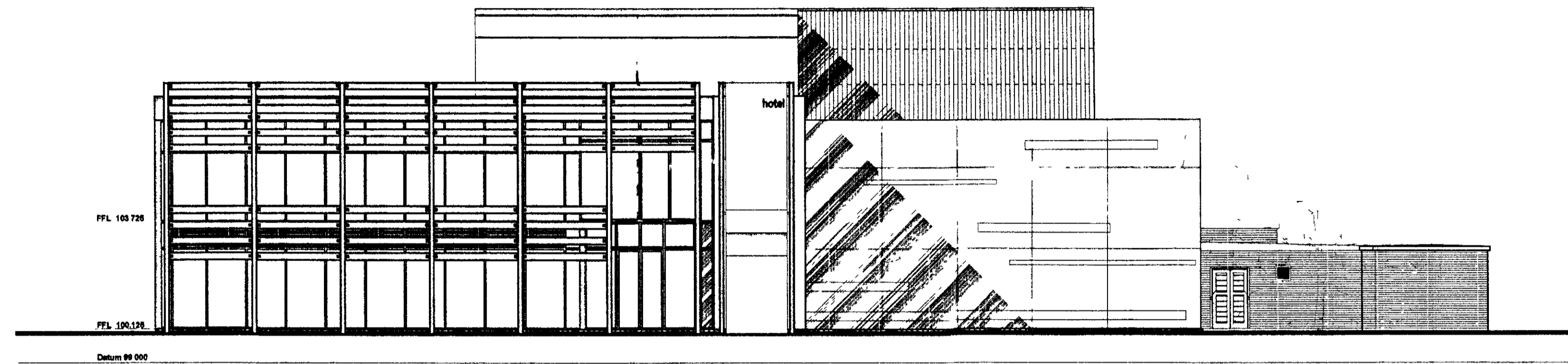
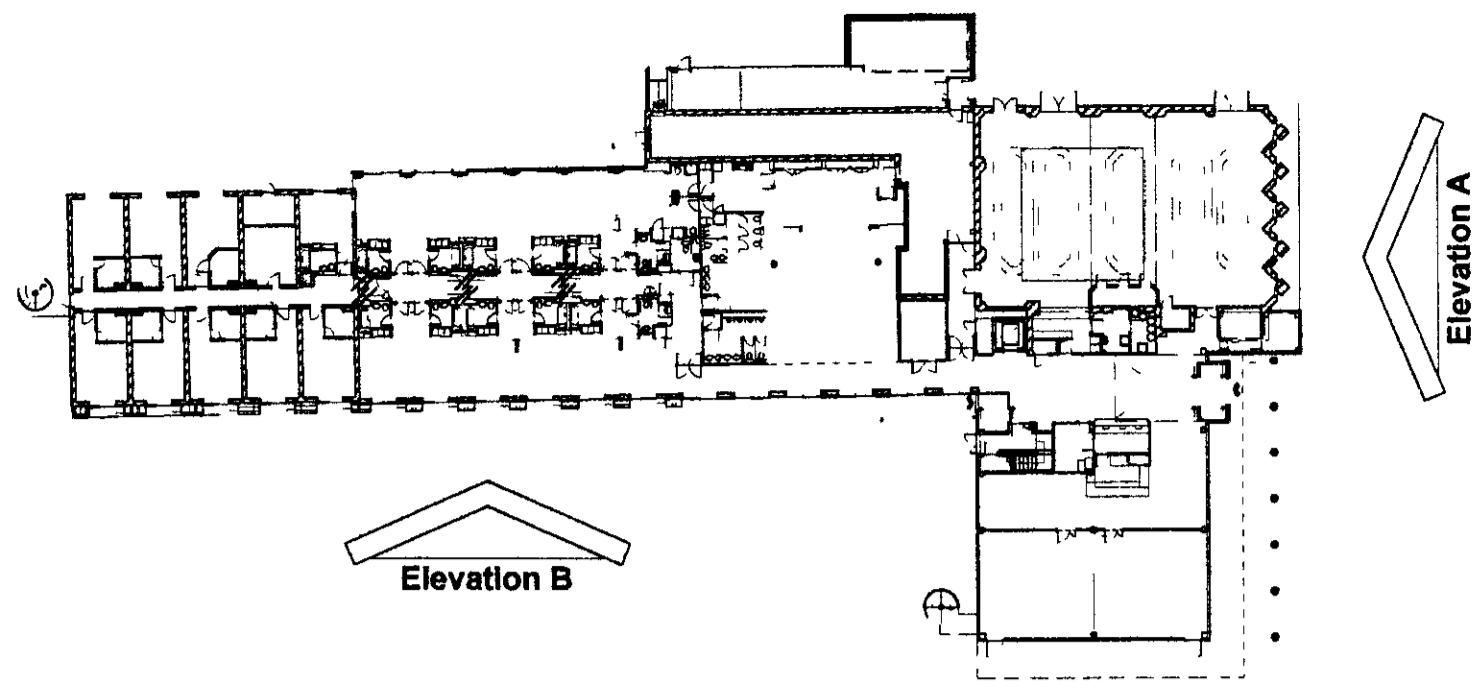


notes

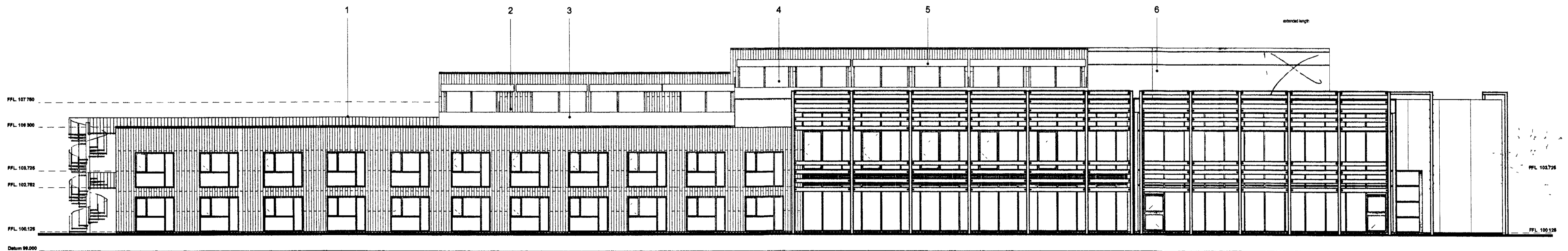
revisions

rev a  
date 18 07 07  
second floor ffl raised by 215mm (upper section) & 185mm (lower section), parapet heights amended as a result, extent of new build amended to reflect revised position of extended stair from first floor to second floor on elev A, window position and sizes amended to reflect internal changes to room/suite types on elev B, escape stair on elev A removed  
drawn: jpg  
checked

rev b  
date 10 08 07  
extent of gym elevation revised to reflect increase in size on elev B  
drawn: jpg  
checked



Proposed Front Elevation  
Elevation A



Proposed Side Elevation  
Elevation B

- Key
- 1 metal railing
  - 2 cedar cladding to match existing
  - 3 frosted glass panel
  - 4 glass to match existing bedroom windows
  - 5 fabric canopy
  - 6 frosted glass with transparent strips to match existing screen on elevation A



PLANNING DEPARTMENT  
OFFICE COPY

16 SEP 2018

PLANNING

Beales Hotels  
Extension of Beales Hotel, Hatfield

Proposed Elevations A and B

scale 1:125 at A1 A05.229.P.008.B  
drawn KW checked date 10.05  
© the copyright in this drawing is vested with The Design Buro and must not be copied, reproduced, published, altered, amended, modified, or otherwise used without the prior written consent of The Design Buro.