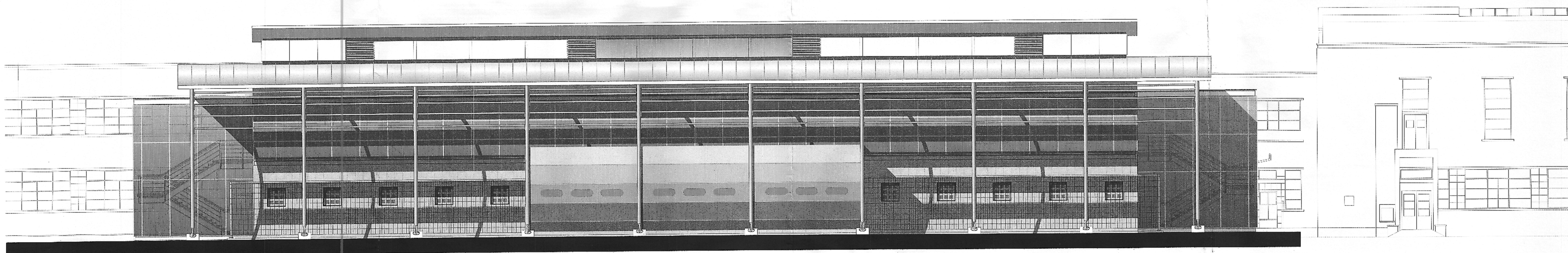


**NORTH ELEVATION (SIDE) SCALE 1:100**



**WEST ELEVATION (REAR) SCALE 1:100**

**KEY TO MATERIALS:**

- 1. ROOFS: BARREL VAULT ROOF TO CUSTODY BUILDING, 4.8 DEGREE ROOF PITCH TO LINK BUILDING - BOTH FINISHED WITH RAISED SEAM INSULATED METAL ROOF DECKING SYSTEM. COLOUR: SILVER GREY MILL FINISH.
- 2. EXTERNAL SOFFITS: WHITE COLOUR PRE-FINISHED METAL DECKING LINER PANELS TO ROOF OVERHAUS. FLAT SMOOTH SOFFIT PANELS TO FRONT ENTRANCE ROOF OVERHANG AND CUSTODY SUITE SKYLIGHTS. COLOUR: GLOSS WHITE.
- 3. RAINWATER GOODS: COLOUR-COATED PROFILED METAL GUTTERS WITH CONCEALED INTERNAL DOWNPIPES - COLOUR: GLOSS WHITE.
- 4. EXTERNAL MASONRY: CUSTODY SUITE GROUND FLOOR - POLISHED CONCRETE PAVING BLOCKWORK. COLOUR: CREAM AS APPROVED SAMPLE.
- 5. EXTERNAL CLADDING: CUSTODY SUITE EAVES PANELS ABOVE FIRST FLOOR LEVEL - COLOUR-COATED COMPOSITE METAL PANEL SYSTEM, SMOOTH FLAT FINISH WITH EXPRESSED VERTICAL JOINTS. COLOUR: GLOSS WHITE. VERTICAL CLADDING BELOW LINK BLOCK ROOF FASCIA AND PLANT ROOM WALLS - CUSTODY SUITE EAVES PANELS ABOVE FIRST FLOOR LEVEL - COLOUR-COATED COMPOSITE METAL PANEL SYSTEM, SMOOTH FLAT FINISH WITH EXPRESSED VERTICAL JOINTS. COLOUR: GLOSS WHITE. VERTICAL CLADDING BELOW LINK BLOCK ROOF FASCIA AND PLANT ROOM WALLS - MIXTURE OF SMOOTH AND FINE SINUSOIDAL RIB PROFILED METAL PANELS INCORPORATING MATCHING VENTILATION LOUVRES - COLOUR: NIGHT BLUE (RAL 5022). CUSTODY VEHICLE ENCLOSURE CLADDING TO BE SILVER COLOUR COATED FLAT PANELS LAID HORIZONTALLY WITH SECURITY GLAZED APERTURES AS INDICATED. COLOUR: SILVER GREY.
- 6. FASCIAS & TRIMS: MATCHING COLOUR-COATED PRESSED METAL INTEGRAL WITH EXTERNAL PANEL SYSTEM. COLOUR: GLOSS WHITE.
- 7. WINDOWS: PROPRIETARY CURTAIN WALL SYSTEM USING COLOUR-COATED THERMALLY BROKEN METAL SECTIONS. TRICKLE VENTS WITH FIXED AND OPENABLE VENTILATORS PROVIDED FOR FIRE FIGHTING ACCESS AND NATURAL VENTILATION AS REQUIRED. COLOUR: GLOSS SILVER GREY (RAL 7001). GLAZING: SEALED DOUBLE-GLAZING UNITS USING SOLAR REFLECTIVE TOUGHENED OUTER LEAF AS NECESSARY. COLOUR: BLUE TINTED GLASS.
- 8. VEHICLE DOORS: SECTIONAL ROLLER SHUTTER DOORS IN COLOUR-COATED METAL. COLOUR: SILVER GREY.
- 9. PERSONNEL DOORS: IN MASONRY WALLS: COLOUR-COATED METAL FRAME SECTIONS. METAL FACED - COLOUR: SILVER GREY. IN CURTAIN WALLS: POWER OPERATED SLIDING FULLY GLAZED ENTRANCE DOORS.
- 10. EXTERNAL METALWORK: EXPOSED GALVANISED & PAINTED CHS AND CHANNEL SECTIONS, BRACING AND BRACKETS - COLOUR: GLOSS WHITE.
- 11. EXTERNAL LOUVRES: SILVER ANODISED LOUVRE BLADES TO CUSTODY SUITE AND ENTRANCE CANOPY ROOF APERTURES.
- 12. BUILDING PERIMETER: SINGLE ROW POLISHED CONCRETE PAVING FLAHS - COLOUR: CREAM AS APPROVED SAMPLE.
- 13. PAVING & PATHS: 40/20MM K40 CONCRETE BLOCK PAVING. COLOUR: LIGHT GREY PAVING FLAHS AND CHARCOAL GREY MARGINS.
- 14. PARKING AND ROADS: STAFF PARKING AREAS: BITUMEN MACADAM SURFACING WITH NATURAL STONE ROLLED CHIPPINGS. CAR PARKING TO BE DELINEATED WITH WHITE LINE PAINT MARKINGS. PUBLIC PARKING: CONCRETE BLOCK PAVING - COLOUR: LIGHT GREY WITH CHARCOAL GREY BAY DELINEATION.
- 15. PERIMETER FENCING: HARRIS STYLE FENCING WITH METAL STRAINING POSTS AND WELD MESH INFILL. COLOUR: GALVANISED.

© VINCENT & GORBING LIMITED 2006  
PROJECT TITLE

**Herfordshire Constabulary  
Hatfield Business Park**

DRAWING TITLE

**PROPOSED ELEVATIONS  
SHEET 1**

SCALE 1:100

PROJECT No. **7423**

DRAWN **SSUBOCZ** CHECKED **SSS**

DATE **Feb 06** DATE

DRAWING No. **A 116**

**VINCENT AND GORBING  
ASSOCIATES**

STERLING COURT NORTON ROAD BYEVENAGE HERTS SG1 2JY  
TELEPHONE: 01438 318331 FAX: 01438 722035  
web: www.vincent-gorbing.co.uk e-mail: architects@vincent-gorbing.co.uk