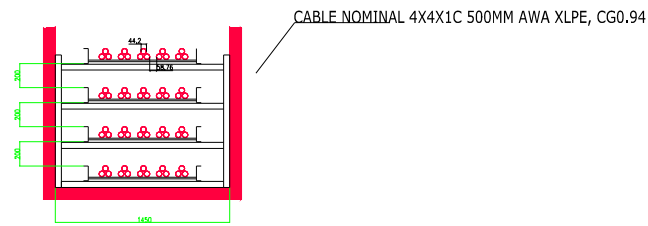


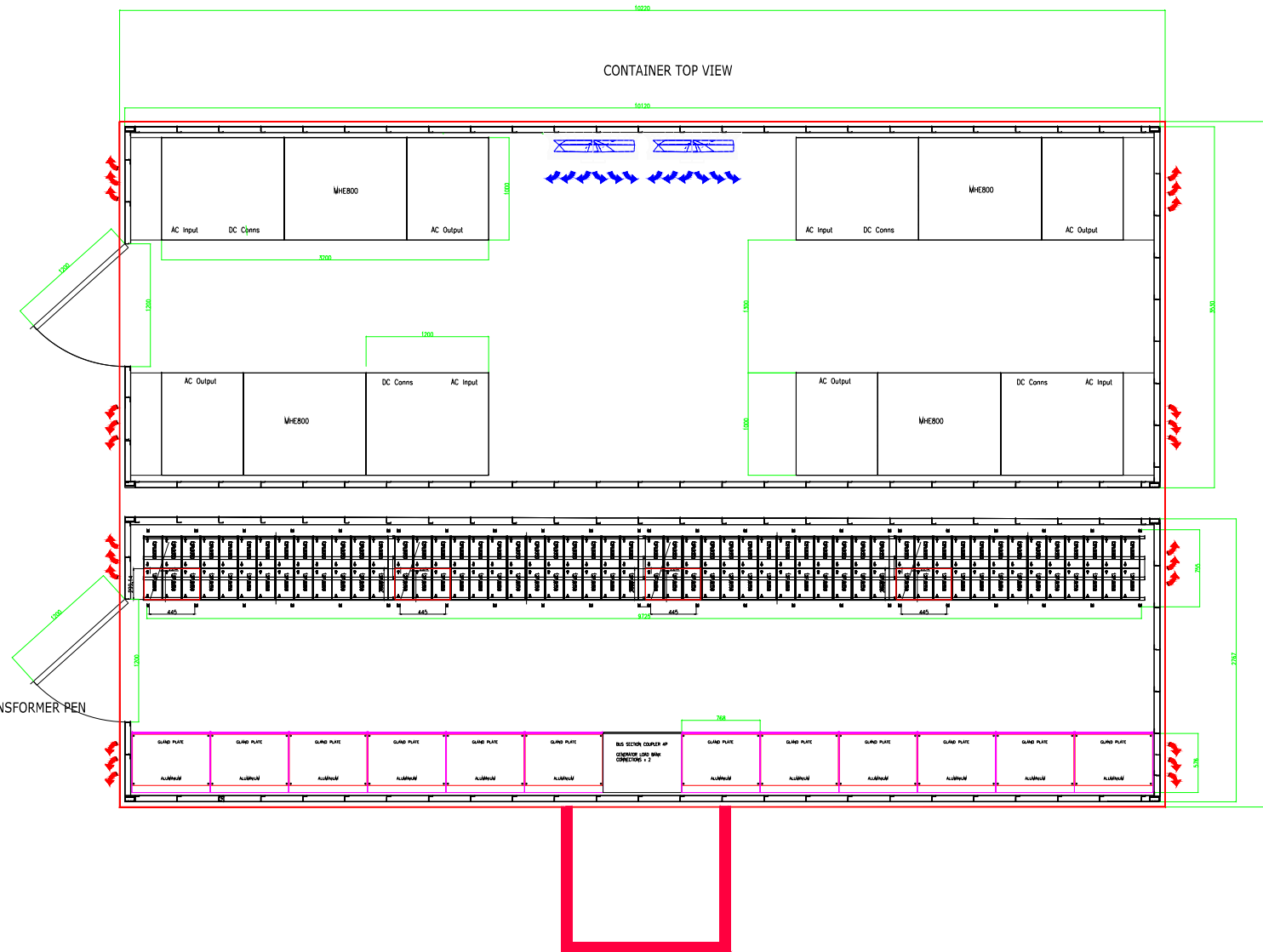
CABLE GROUPING IN TROUGH



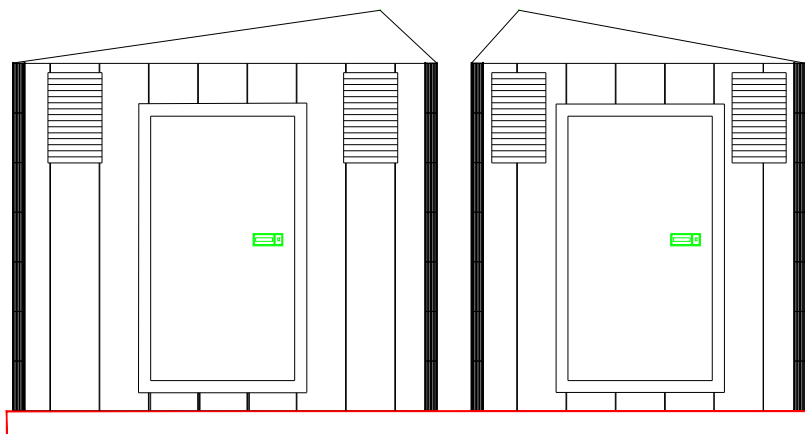
NOTES

- 1) CABLE GROUPING BASED ON ASSUMPTION OF 3200A PF, FORCED VENTILATION.
- 2) CONTAINER LAYOUT BASED ON 4NO 800KVA UPS.
- 3) SWITCHGEAR SIZING BASED ON 2 X 3200AMP SYSTEMS WITH 2NO UPS PER SIDE, PLUS OVERALL MBP.
- 4) CABLE ENTRIES ASSUMED TO BE BOTTOM OF SWITCHGEAR
- 5) CONTAINER TO COMPRISE OF STEEL CHEQUERPLATE FLOOR VOID FOR ALL CABLING
- 6) CORTEN STEEL CONSTRUCTION OF FOLDING 2MM STEEL, 50MM INSULATION AND 150X50X10 BOX SECTION
- 7) HORIZONTAL BEARERS TO KEY LOADING POINTS OF SWITCHGEAR, BATTERY RACKS AND UPS PLINTHS
- 8) UPS COOLED USING F7/G4 FILTRATION
- 9) BATTERIES COOLED USING SPLIT AC SYSTEMS N+1
- 10) FRESH AIR SYSTEM TO FIAMM SPECIFICATION
- 11) THERE EXISTS ONLY ONE MEANS OF ESCAPE FROM EACH CONTAINER CURRENTLY, DUE TO PROXIMITY TO HV TRANSFORMER PEN
- 12) CONTAINER UNEQUAL ROOF PITCH IS DESIGNED TO DIRECT RAINFALL AWAY FROM THE SEPARATION AREA

CONTAINER TOP VIEW



CONTAINER END DETAIL



CONTAINER SIDE DETAIL

