



7 EIDO

PEDESTRIAN

TENNIS COURTS

PUBLIC FOOTPATH & CYCLE WAY

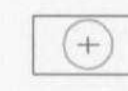





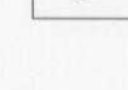

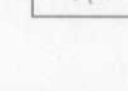
TURNING HEAD

ADJACENT (6 STOP

BALANCING PONDS

LANDSCAPED CAR PARK

KEY

-  PROPOSED FEATHERED TREE, INCLUDING STAKE AND TIE. SEE SPECIFICATION NOTES A1, B2-3, B5-6, C1-6, D1-2 AND E1.
-  PROPOSED STANDARD TREE, INCLUDING DOUBLE STAKE AND TIE. SEE SPECIFICATION NOTES A1, B2-3, B5-6, C1-6, D1-2 AND E1.
-  SHRUB AND HERBACEOUS PLANTING, INCLUDING BARK MULCH (ACCORDING TO SPECIFICATION). SEE SPECIFICATION NOTES A1-2, B1-3, B6, C1-3, D1-2 AND E1. SUPPLY SHEET MULCH ONLY WHERE SPECIFICATION/DETAIL SHOWN ON THE PLAN.
-  CULTIVATED TURF UNLESS OTHERWISE STATED ON PLAN. SEE SPECIFICATION NOTES B4, C7 AND E1.
-  CLIMBING SHRUB IN SHRUB BEDS OR IN PITS IN PAVING (SEE PLAN AND NOTE 11). TWINING VARIETIES (MARKED 'T') SEE NOTE 12. SELF CLIMBING VARIETIES (MARKED 'S') SEE SPECIFICATION NOTES C1-3, C8-10, D1-2 AND E1.
-  SPECIMEN SHRUBS IN SHRUB BEDS OR PIT PLANTED IN GRASS AREAS. SPECIMEN SHRUBS IN GRASS ARE MEASURED SEPARATELY IN SCHEDULE OF QUANTITIES. SEE SPECIFICATION NOTES A1, B1-3, B6, C1-3, D1-2 AND E1.
-  HEDGE PLANTING, INCLUDING SHEET/BARK MULCH (ACCORDING TO SPECIFICATION). REFER TO HEDGE SCHEDULES ON PLAN AND THE SCHEDULE OF QUANTITIES. SEE SPECIFICATION NOTES A1-2, B1-3, B6, C1-3, D1-2 AND E1. SUPPLY SHEET MULCH ONLY WHERE SPECIFICATION/DETAIL SHOWN ON THE PLAN.
-  NATIVE WHIP AND SHRUB PLANTING IN MIXES, INCLUDING BARK MULCH (ACCORDING TO SPECIFICATION). SEE SPECIFICATION NOTES A1-2, B1-3, B6, C1-3, D1-2 AND E1. SUPPLY SHEET MULCH ONLY WHERE SPECIFICATION/DETAIL SHOWN ON THE PLAN.
-  GRAVELLED AREAS OVER HYTEX MEMBRANE. TO BE COMPLETED BY LANDSCAPE CONTRACTOR.

TO BE READ IN CONJUNCTION WITH PLAN NOS:
HAT4/03/101; SCHEDULE & SPECIFICATION

PLAN TO BE USED FOR:
SOFTWARES
GRAVELLED AREAS

PLANNING DEPARTMENT
OFFICE COPY
17 APR 2007
NO: Q7/0611-

Rev Date Details By

Drainage Authority Approval Date

Highway Authority Approval Date

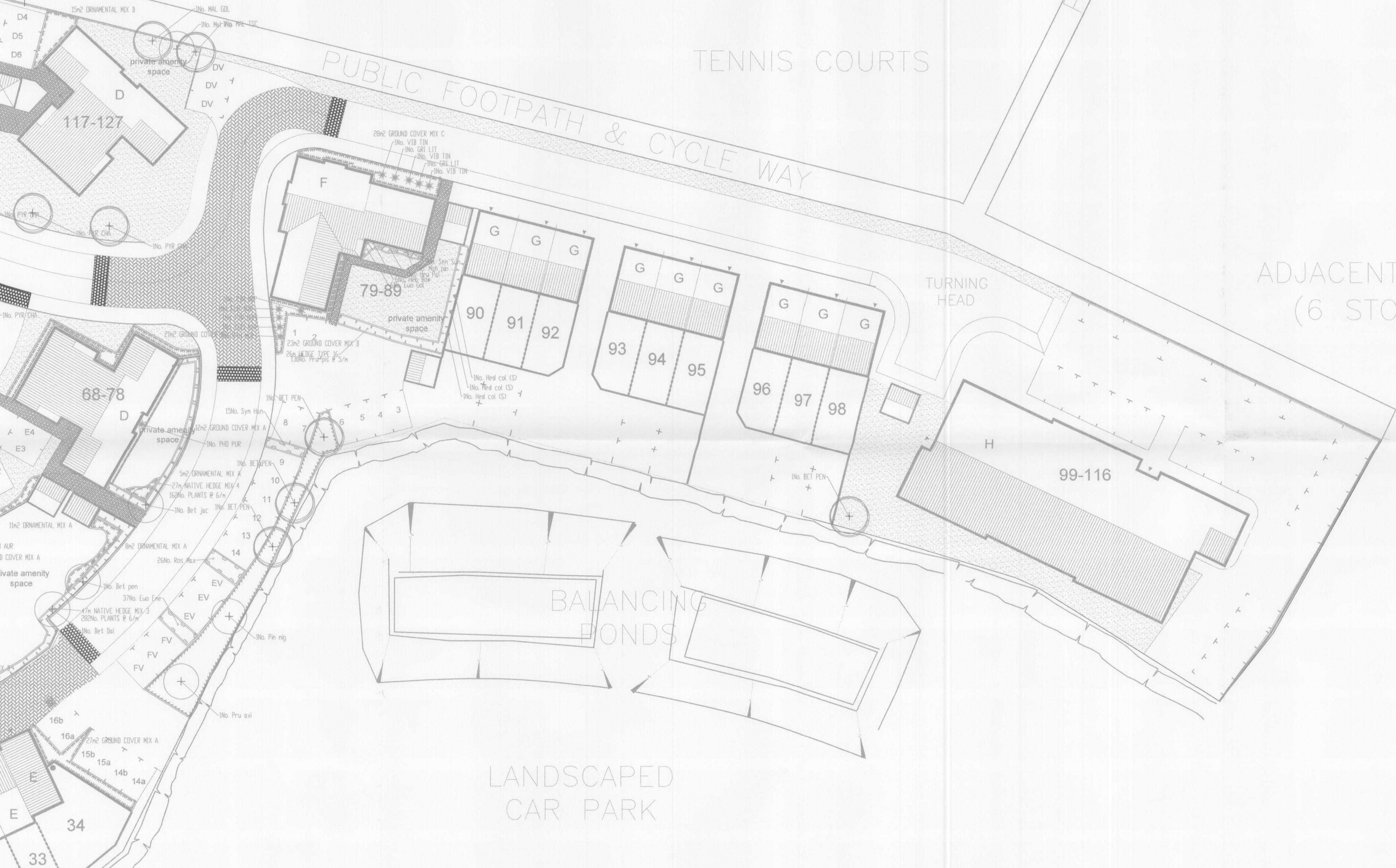
Do not scale from this drawing. Use written dimensions only, when shown relationships between site levels and ground levels are to be checked on site. Any discrepancy or suggested modification to be reported to Design and Engineering Director.
Note: This drawing is the copyright of Bovis Homes Ltd.

 Bovis Homes Central Region
Bromwich Court
Highway Point
Gorseley Lane
Coleshill
B46 1JU
Tel: 01675 437 000
Fax: 01675 437 094
DX: 728340 Coleshill 2

SITE HATFIELD PHASE 4
Hatfield Aerodrome, Hatfield, East Herts

DRAWING TITLE Landscape Proposals
Sheet 3 of 3

DRAWN BY	DATE	DRAWING NO.	REV
DO	4.4.7	Hat4-03-100	
SCALE:	CHECKED/DATE		
1:250(BA1)			



LANDSCAPING LAYOUTS SHOULD BE USED FOR:
Proposed private soft works
Proposed public hard and soft works unless cross referenced to other drawings

LANDSCAPING LAYOUTS SHOULD NOT BE USED FOR:
Fencing and drive positions or materials
Private slabbing paths and patios
House types and positions
Clearance of existing vegetation (see Tree Survey Plan)

House Type Schedule