

Landscape Master Plan

This Landscape Master Plan has been prepared as part of a Planning Application at Land to the east of Fir Wood Close, Northaw, Hertfordshire. This application is for the erection of 26 no. affordable units with associated access. This drawing should be read in conjunction with the Landscape and Visual Impact Assessment which has been submitted as part of the Planning Application. All proposals set out in the Master Plan to be confirmed as part of a detailed Landscape Plan submission.

Landscape Philosophy

To provide a landscape design which reflects the semi-rural context of the site and the existing built form and public use around the site. The proposals will retain important landscape features such as wooded areas and trees outside the site boundaries which add value to the site layout.

The development will be set in a native landscape setting using additional trees, shrubs and hedges to the site boundaries. There will be formal planting areas associated with the residential garden areas and communal areas within the main body of the development. The plant mix used will be beneficial to wildlife and help to improve the bio-diversity of the site.

Overall the development will provide a range of wildlife habitats across the site which will increase the bio-diversity of the site as well as providing an attractive setting for the development which contributes to the character of the area.

Plan Details

Hard Material Specification

Surfacing Materials and Fencing are as to be used in the areas as shown on the Landscape Plan, as indicated on the Key and as set out below.

Hard Surface Materials

Main Access Road, Driveways, Car Parking Areas and Footpaths
A limited range of materials will be used including Tegula, Cobbles or Block Pavours. These will add variety and interest in the street scene but retain a cohesiveness within the design and avoid a uniform and bland public space. Some will be 3-5 no. blocks laid in a random course and some will be laid in a standard layout such as a herringbone pattern.

Residential Patio Areas and Footpaths to Rear Gardens

Used to the rear garden areas of dwellings. A range of materials to be used including Limestone, Sandstone and Timber Decking.

Setts

Granite setts 100 x 100 mm may be used to define areas between different surfaces.

Fencing Specification

Close Board Fencing - to rear gardens

1.83 m height x 1.83 m width close board fence panels with 100 mm vertical poles. Panels to be supported on 2700 mm x 100 x 100 mm slotted posts concreted into the ground to approximately 500 mm.

Picket Fencing

To 1.2 m height. Could be used to the frontages of a limited number of dwellings to introduce a different element into the street scene.

Plant Specifications

Tree Specification

A range of tree species will be used to add diversity to the site and introduce some resilience to the tree stock. Native species will be predominately used in the amenity areas and general site. These will include:

- Acer campestre (Field Maple) - 10-12 cm girth and 300-350 cm height at planting
- Betula pendula (Silver Birch) - 10-12 cm girth and 300-350 cm height at planting
- Carpinus betulus (Hornbeam) - 10-12 cm girth and 300-350 cm height at planting
- Crataegus monogyna (Common Hawthorn) - 10-12 cm girth and 300-350 cm height at planting
- Malus sylvestris (Crab Apple) - 10-12 cm girth and 300-350 cm height at planting
- Prunus padus (Bird Cherry) - 10-12 cm girth and 300-350 cm height at planting
- Sorbus aria (Whitebeam) - 12-14 cm girth and 350-425 cm height at planting
- Sorbus aucuparia (Rowan) - 10-12 cm girth and 300-350 cm height at planting
- Tilia cordata (Small-leaved Lime) - 12-14 cm girth and 350-425 cm height at planting

A range of trees will be included within the garden areas of the development. These will include the following:

- Acer oppidocicum 'Aureum' - 10-12 cm girth and 300-350 cm height at planting
- Amelanchier 'Robin Hill' - 10-12 cm girth and 300-350 cm height at planting
- Cercis siliquastrum - 10-12 cm girth and 300-350 cm height at planting
- Crataegus laevigata 'Pauls Scarlet' - 10-12 cm girth and 300-350 cm height at planting
- Malus 'Laura' - 10-12 cm girth and 300-350 cm height at planting
- Malus 'Indian Magic' - 10-12 cm girth and 300-350 cm height at planting
- Prunus cerasifera 'Nigra' - 10-12 cm girth and 300-350 cm height at planting
- Prunus 'Spiré' - 10-12 cm girth and 300-350 cm height at planting
- Prunus subhirtella 'Autumnalis' - 10-12 cm girth and 300-350 cm height at planting
- Prunus 'The Bride' - 10-12 cm girth and 300-350 cm height at planting
- Quercus 'Green Pillar' - 14-16 cm girth and 425-600 cm height at planting
- Sorbus 'Bessneri' - 10-12 cm girth and 300-350 cm height at planting
- Sorbus commixta 'Embley' - 10-12 cm girth and 300-350 cm height at planting

Hedging Specifications

Several types of hedges will be included within the site. Hedging will be used to soften the proposals and add connectivity for wildlife within the site. The majority of dwellings will have a hedge. The following hedges are proposed:

Hawthorn Hedging

Where shown plant the following native hedge mix in a double staggered row at 50 cm centres. Plants to be 60-90 cm height and supplied bare root. Plants may need to be protected with tree guards or fencing (for instance) if predation by species such as rabbits is assessed as being a problem.

- Crataegus monogyna (Common Hawthorn) - 70%
- Acer campestre (Field Maple) - 10%
- Lonicera periclymenum (Common Honeysuckle) - 5%
- Rosa canina (Dog Rose) - 5%
- Viburnum opulus (Guelder Rose) - 10%

Other hedging to include native species such as Yew and Beech as well as Privet, Escallonia, Photinia and Viburnum.

Native Shrub Areas

Create native shrub areas to provide wildlife benefits, screen views through the site and provide structural elements in the landscape. Plant the following native shrubs in random groups of 3 or 5 at an overall density of 3 shrubs per 5 m². All native stock to be 40-60 cm, Bare Root, Branched:

- Cornus sanguinea (Dogwood), Corylus avellana (Hazel), Crataegus monogyna (Common Hawthorn), Fraxinus siliqua (Alder Buckthorn), Ilex aquifolium (Holly), Ligustrum vulgare (Common Privet), Malus domestica (Crab Apple), Sambucus nigra (Elder), Viburnum opulus (Guelder Rose) and Viburnum lantana (Wayfaring Tree).

Species will be pruned as necessary to maintain shape and vigour.

Formal Planting Areas

A wide variety of both shrubs, climbers and herbaceous species will be used within the formal areas of the site. Plants will be chosen with care so that they will provide both an attractive setting for the development as well as be beneficial to wildlife in the form of nectar (flowers), fruit (berries and nuts) and by providing shelter and nesting sites.

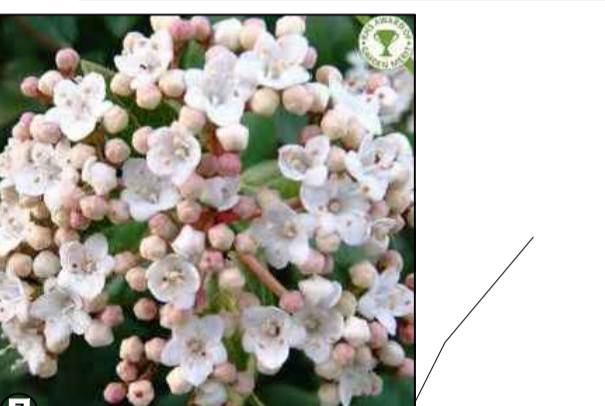
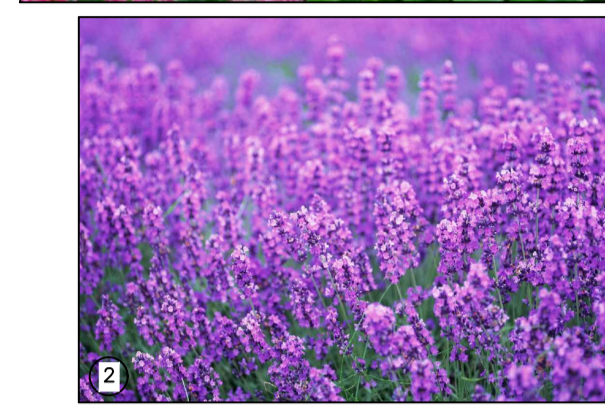
- Herbaceous species to be in 1-2 Lt containers and will include:
 - Aconitum napellus
 - Achillea millefolium
 - Brunnera macrophylla
 - Geranium 'Johnsons Blue'
 - Geranium macrorrhizum 'Bevans Variety'
 - Heuchera 'Palace Purple'
 - Penstemon 'Apple Blossom'
 - Soliva 'Purpurescens'
 - Sedum 'Autumn Joy' (1)
 - Tellima grandiflora

Shrub species to be in 3-7.5 Lt containers and will include:

- Berberis darwinii
- Berberis thunbergii 'Atrapurpurea'
- Berberis wilsonii
- Ceanothus 'Autumnal Blue'
- Choisyia ternata
- Cornus 'Aurea'
- Cornus 'Midwinter Fire'
- Elaeagnus pungens 'Maculata'
- Escallonia 'Apple Blossom'
- Forsythia x intermedia 'Lynwood'
- Hebe 'Autumn Joy'
- Hebe 'Nicola's Blush'
- Hypericum 'Hidcote'
- Lavendula angustifolia (2)
- Philadelphus 'Beauclair'
- Potentilla fruticosa 'Red Ace'
- Rosmarinus officinalis
- Sarcococca humilis
- Skimmia japonica 'Rubella'
- Spiraea 'Goldflame'
- Viburnum 'Anne Russell'
- Viburnum davidii
- Viburnum tinus 'Eve Price' (3)
- Weigela 'Mont Blanc'
- Weigels 'Bristol Ruby'

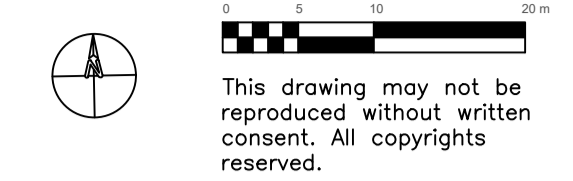
Climbers to include:

- Clematis armandii
- Clematis 'Hagley Hybrid'
- Jasminum humile
- Trachelospermum jasminoides



Hardstanding Materials

Use a range of high quality materials which will complement the setting and layout of the development. Materials to include Tegula (see photo example), block pavours, cobbles and granite setts.



This drawing may not be reproduced without written consent. All copyrights reserved.

Based on drawings supplied by Boost Associates Architects.

The original of this drawing was produced in colour - a monochrome copy should not be relied upon.

Land to the east of
 Firs Wood Close,
 Northaw, Hertfordshire

Drawing Title:
Landscape Master Plan

Drawing No:
LP/LEFWCNH/020. A
Client: Watford
Community Housing
Trust
Scale: 1:500 @ A1
Drawn By: drc
Date: April 2019

DCCLA

David Clarke BSc (Hons) PD Arb (RFS)
CMLI M Arbor A
Offices in Hertfordshire and Warwickshire
Head Office: Willowbrook House, Church Lane, Fillongley, Warwickshire, CV7 8EW
M: (07775) 650 835 or (01676) 541 853
e.mail: info@dccla.co.uk



Native Tree and Shrub Areas
Create a 4.0 m deep landscape screen using native trees and shrubs. To provide a dense screen to the site frontage with Fir Wood Close. This will also provide wildlife benefits, screen views through the site and provide structural elements in the landscape. To include Field Maple, Common Hawthorn and Rowan with Dogwood, Guelder Rose and Privet. See images of Guelder Rose (a) and Dogwood (b) below. Plant shrubs in random groups of 3 or 5 at an overall density of 3 shrubs per 5 m². All native stock to be 40-60 cm, Bare Root, Branched. Species will be pruned as necessary to maintain shape and vigour.

Native Hedging
To be planted to site boundaries and along access road. To include Hawthorn (below), Beech and Yew to reflect the semi-rural location of the site. Hedges will provide good wildlife value and will help to screen and soften the proposed development.

Hedging
A range of formal hedges to be planted within the site. To include Beech (see adjacent Photograph), Privet, Viburnum and Escallonia. Hedges will provide good screening and connectivity for wildlife within the site. They will also be strong visual elements within the development.

Trees within the site to include native species such as Crab Apple (A), Rowan (B) and Field Maple (C).

Key

- General Site - Driveways and Footpaths. A range of quality materials to be used including Tegula, Cobbles or Brick Pavours
- Patios and Footpaths to rear gardens. A range of materials including Limestone and Timber Decking
- Amenity Grass areas
- Proposed formal planting areas as indicated in the Planting Specification.
- Proposed Native Shrub Areas as set out in the Planting Specification.
- Proposed hedges as shown on the plan and as listed within the Planting Specification.
- Existing trees to be retained
- New trees to be planted - as listed