

Hatfield ONE Healthcare - External Lighting

Engineer: Chris Morley
Project Number: 1152
Project Name: Hatfield ONE Healthcare
Location: Hatfield

Date: 17.08.2015
Operator: Chris Lloyd-Morley

Walmsley Associates
 60 Park Road, Chorley PR7 1QU

Operator Chris Lloyd-Morley
 Telephone 01257 232232
 Fax
 e-Mail chrislm@walmsleyassociates.co.uk

Table of contents

Hatfield ONE Healthcare - External Lighting	
Project Cover	1
Table of contents	2
Whitcroft Lighting SWTLH24KM Spectre Wall	
Luminaire Data Sheet	4
WHITECROFT SIPSH14K SIROCCO PARK	
Luminaire Data Sheet	5
Site External Lighting	
Planning data	6
Luminaire parts list	7
3D Rendering	8
Exterior Surfaces	
West Car Park	
Isolines (E, Perpendicular)	9
Goods Loading	
Isolines (E, Perpendicular)	10
Small West Car Park & Circulation area	
Isolines (E, Perpendicular)	11
West Car Park Access Road	
Isolines (E, Perpendicular)	12
South & Accessible Car Park	
Isolines (E, Perpendicular)	13
Main Entrance Road	
Isolines (E, Perpendicular)	14
East Car Park	
Isolines (E, Perpendicular)	15
Manor Road Vertical Plane	
Isolines (E, Perpendicular)	16
Table (E, Perpendicular)	17
Manor Road Vertical Plane at houses	
Isolines (E, Perpendicular)	30
Table (E, Perpendicular)	31
Site External Lighting with Foliage	
Planning data	44
Luminaire parts list	45
3D Rendering	46
Exterior Surfaces	
West Car Park	
Isolines (E, Perpendicular)	47
Goods Loading	
Isolines (E, Perpendicular)	48
Small West Car Park & Circulation area	
Isolines (E, Perpendicular)	49
West Car Park Access Road	
Isolines (E, Perpendicular)	50
South & Accessible Car Park	
Isolines (E, Perpendicular)	51
Main Entrance Road	
Isolines (E, Perpendicular)	52
East Car Park	
Isolines (E, Perpendicular)	53
Manor Road Vertical Plane	
Isolines (E, Perpendicular)	54
Table (E, Perpendicular)	55

Walmsley Associates
60 Park Road, Chorley PR7 1QU

Operator Chris Lloyd-Morley
Telephone 01257 232232
Fax
e-Mail chrislm@walmsleyassociates.co.uk

Table of contents

Manor Road Vertical Plane at houses	
Isolines (E, Perpendicular)	68
Table (E, Perpendicular)	69

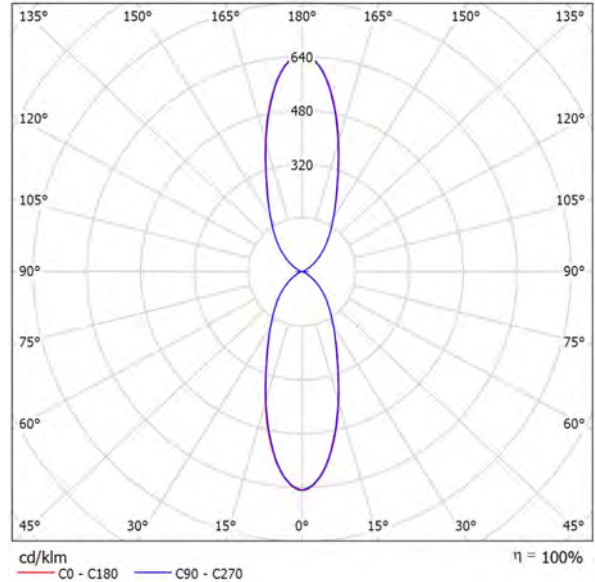
Walmsley Associates
60 Park Road, Chorley PR7 1QU

Operator Chris Lloyd-Morley
Telephone 01257 232232
Fax
e-Mail chrislm@walmsleyassociates.co.uk

Whitecroft Lighting SWTLH24KM Spectre Wall / Luminaire Data Sheet

Luminous emittance 1:

See our luminaire catalog for an image of the luminaire.



Luminaire classification according to CIE: 50
CIE flux code: 77 96 99 50 100

Luminous emittance 1:

Glare Evaluation According to UGR											
ρ Ceiling	70	70	50	50	30	70	70	50	50	30	
ρ Walls	50	30	50	30	30	50	30	50	30	30	
ρ Floor	20	20	20	20	20	20	20	20	20	20	
Room Size X Y	Viewing direction at right angles to lamp axis					Viewing direction parallel to lamp axis					
2H	2H	15.5	16.2	16.4	17.0	18.1	15.6	16.2	16.4	17.1	18.2
	3H	15.8	16.4	16.7	17.3	18.4	15.9	16.5	16.8	17.4	18.5
	4H	15.8	16.4	16.7	17.3	18.4	15.9	16.5	16.8	17.4	18.5
	6H	15.8	16.3	16.7	17.2	18.3	15.9	16.4	16.8	17.3	18.5
	8H	15.7	16.2	16.7	17.1	18.3	15.8	16.3	16.8	17.2	18.4
4H	2H	15.5	16.0	16.4	16.9	18.0	15.5	16.0	16.4	16.9	18.1
	3H	15.9	16.3	16.8	17.2	18.4	15.9	16.4	16.9	17.3	18.5
	4H	15.9	16.3	16.9	17.3	18.5	16.0	16.4	17.0	17.3	18.6
	6H	15.9	16.2	16.9	17.2	18.5	16.0	16.3	17.0	17.3	18.6
	8H	15.9	16.2	16.9	17.2	18.4	16.0	16.3	17.0	17.3	18.5
8H	2H	15.8	16.1	16.9	17.1	18.4	16.0	16.2	17.0	17.2	18.5
	4H	15.8	16.1	16.8	17.1	18.4	15.9	16.2	16.9	17.2	18.5
	6H	15.8	16.1	16.9	17.1	18.4	15.9	16.2	16.9	17.2	18.5
	8H	15.8	16.1	16.9	17.1	18.4	15.9	16.1	17.0	17.2	18.5
	12H	15.8	16.0	16.9	17.0	18.4	16.0	16.2	17.0	17.2	18.5
12H	4H	15.7	16.0	16.8	17.0	18.3	15.8	16.1	16.8	17.1	18.4
	6H	15.8	16.0	16.8	17.0	18.3	15.9	16.1	16.9	17.1	18.4
	8H	15.8	16.0	16.9	17.0	18.4	15.9	16.1	16.9	17.1	18.5

Variation of the observer position for the luminaire distances S		
S = 1.0H	+0.6 / -1.3	+0.6 / -1.2
S = 1.5H	+1.6 / -2.8	+1.6 / -2.8
S = 2.0H	+3.1 / -4.3	+3.0 / -4.2
Standard table Correction Summand	BK01 -3.2	BK01 -3.1

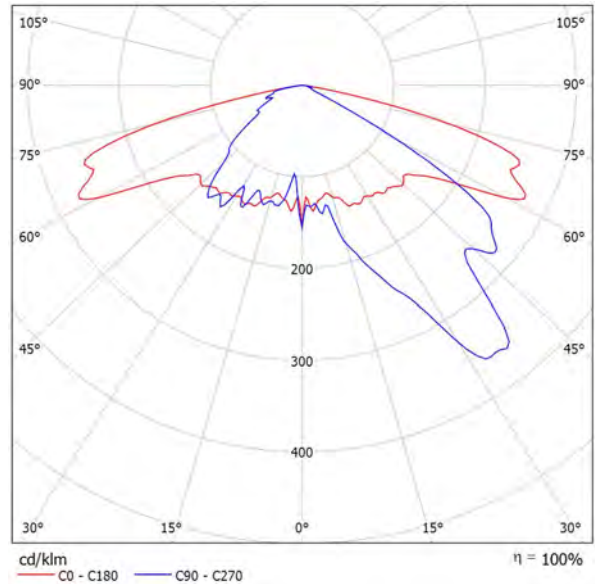
Corrected Glare Indices referring to 3527lm Total Luminous Flux

Walmsley Associates
60 Park Road, Chorley PR7 1QU

Operator Chris Lloyd-Morley
Telephone 01257 232232
Fax
e-Mail chrislm@walmsleyassociates.co.uk

WHITECROFT SIPSH14K SIROCCO PARK / Luminaire Data Sheet

Luminous emittance 1:



Luminaire classification according to CIE: 100
CIE flux code: 31 72 97 100 100

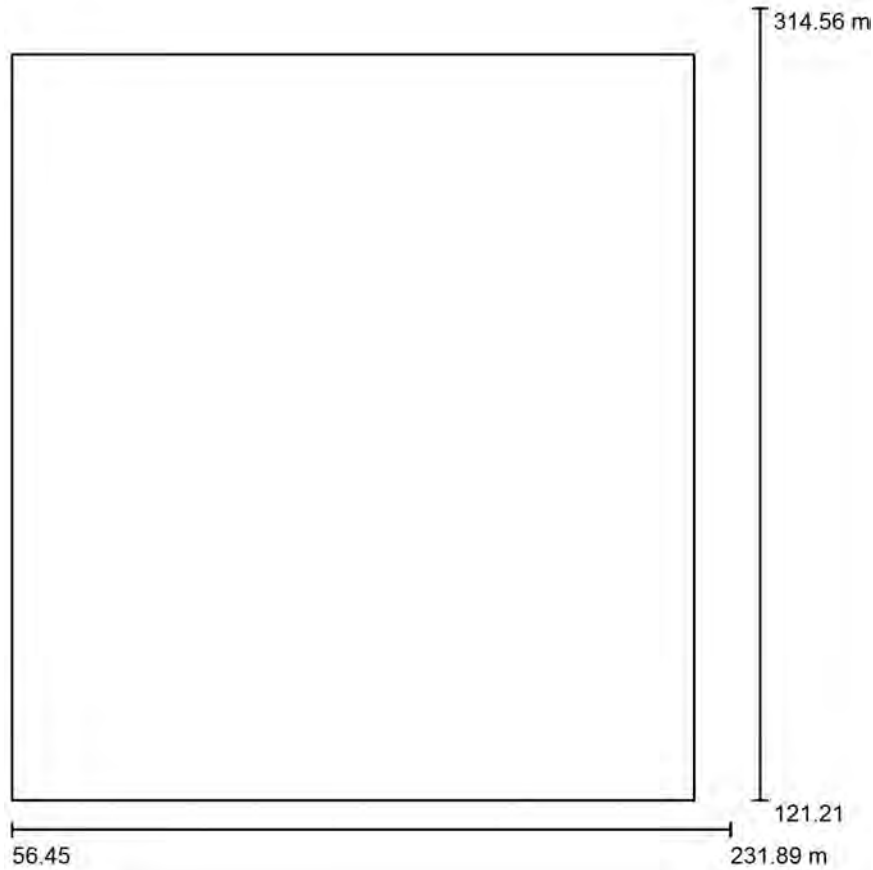
IP66 LED post top lantern with ultra slim die cast aluminium body and integrated cooling fins. With symmetric or asymmetric distribution having zero upward light. Electronic control gear with voltage surge protection and double insulated safety switch – as Whitecroft Lighting SIROCCO PARK.

Due to missing symmetry properties, no UGR table can be displayed for this luminaire.

Walmsley Associates
60 Park Road, Chorley PR7 1QU

Operator Chris Lloyd-Morley
Telephone 01257 232232
Fax
e-Mail chrism@walmsleyassociates.co.uk

Site External Lighting / Planning data



Maintenance factor: 0.80, ULR (Upward Light Ratio): 0.5%

Scale 1:1793

Luminaire Parts List

No.	Pieces	Designation (Correction Factor)	Φ (Luminaire) [lm]	Φ (Lamps) [lm]	P [W]
1	4	Whitcroft Lighting SWTLH24KM Spectre Wall (1.000)	3527	3527	29.0
2	28	WHITCROFT SIPSH14K SIROCCO PARK (1.000)	4976	4976	52.0
Total:			153431	Total: 153436	1572.0

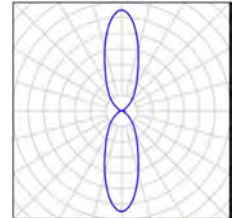
Walmsley Associates
60 Park Road, Chorley PR7 1QU

Operator Chris Lloyd-Morley
Telephone 01257 232232
Fax
e-Mail chrism@walmsleyassociates.co.uk

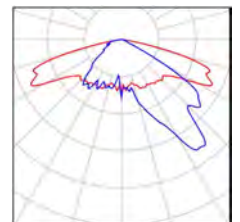
Site External Lighting / Luminaire parts list

4 Pieces Whitecroft Lighting SWTLH24KM Spectre Wall
Article No.: SWTLH24KM
Luminous flux (Luminaire): 3527 lm
Luminous flux (Lamps): 3527 lm
Luminaire Wattage: 29.0 W
Luminaire classification according to CIE: 50
CIE flux code: 77 96 99 50 100
Fitting: 1 x LED (Correction Factor 1.000).

See our luminaire catalog
for an image of the
luminaire.



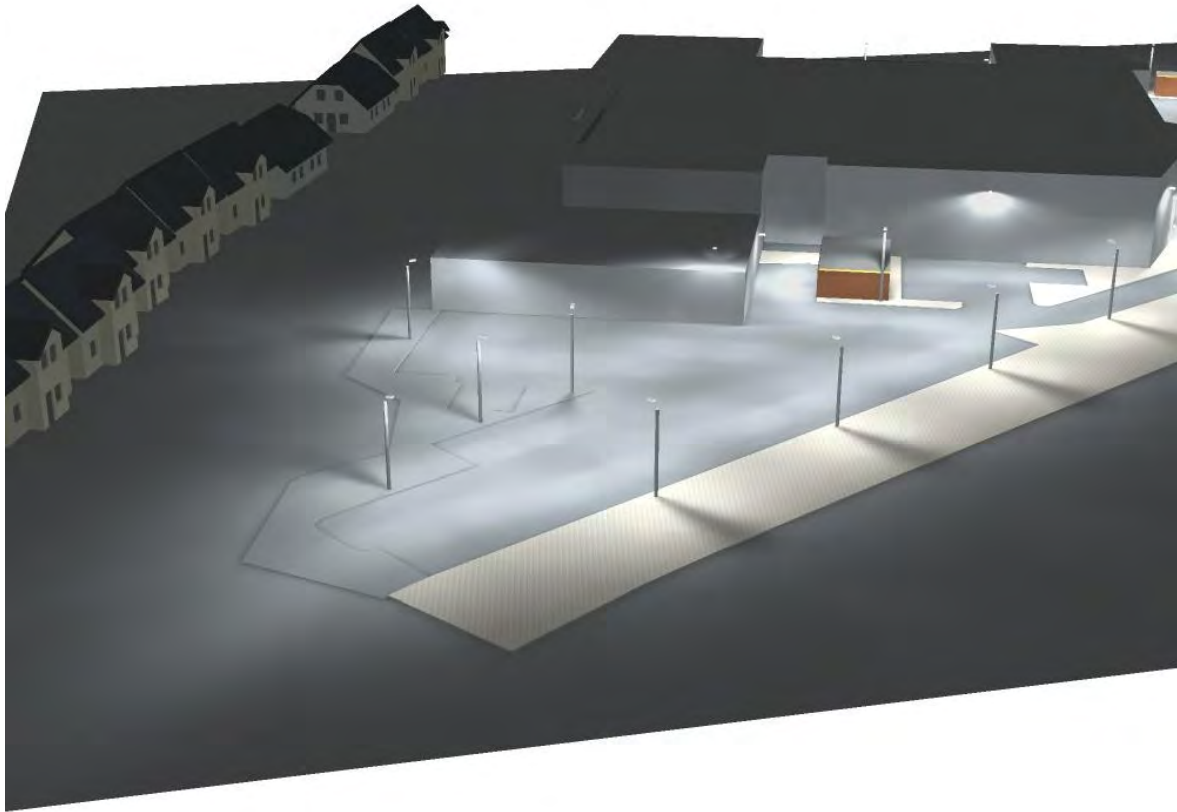
28 Pieces WHITECROFT SIPSH14K SIROCCO PARK
Article No.: SIPSH14K
Luminous flux (Luminaire): 4976 lm
Luminous flux (Lamps): 4976 lm
Luminaire Wattage: 52.0 W
Luminaire classification according to CIE: 100
CIE flux code: 31 72 97 100 100
Fitting: 1 x LED (Correction Factor 1.000).



Walmsley Associates
60 Park Road, Chorley PR7 1QU

Operator Chris Lloyd-Morley
Telephone 01257 232232
Fax
e-Mail chrism@walmsleyassociates.co.uk

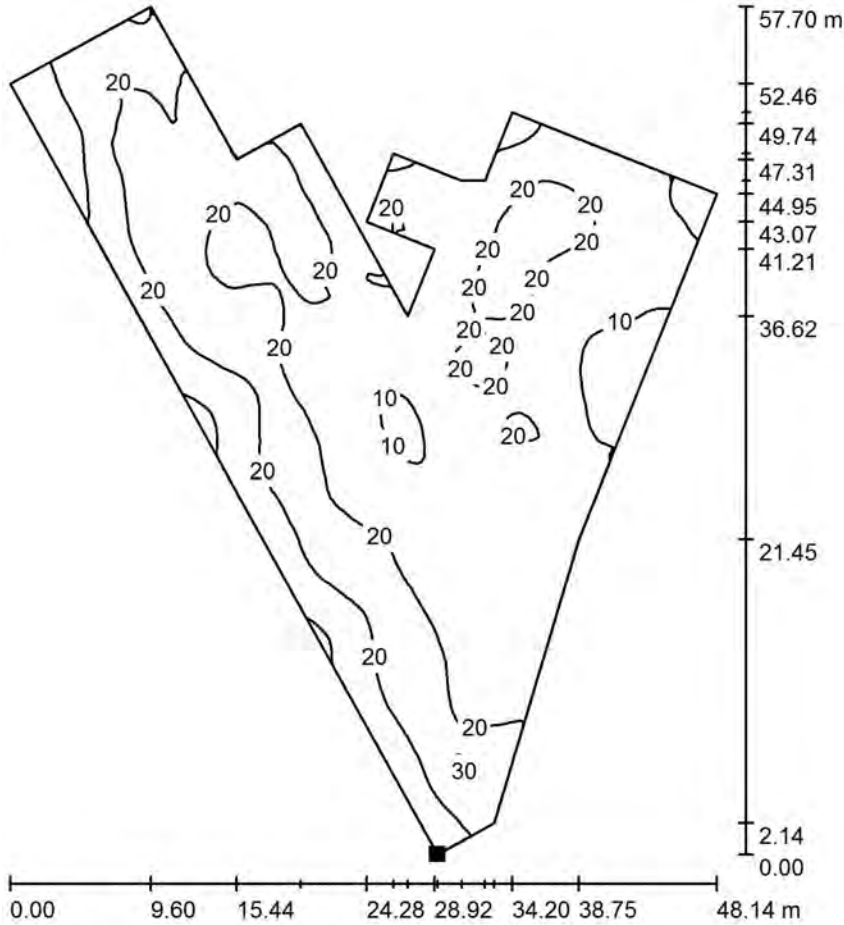
Site External Lighting / 3D Rendering



Walmsley Associates
 60 Park Road, Chorley PR7 1QU

Operator Chris Lloyd-Morley
 Telephone 01257 232232
 Fax
 e-Mail chrism@walmsleyassociates.co.uk

Site External Lighting / West Car Park / Isolines (E, Perpendicular)



Values in Lux, Scale 1 : 500

Position of surface in external scene:
 Marked point:
 (104.424 m, 220.627 m, 0.100 m)



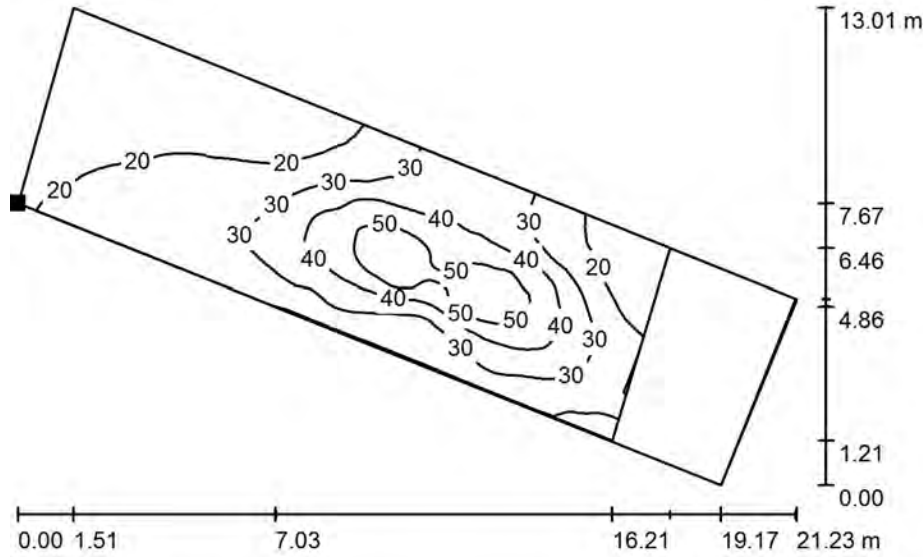
Grid: 128 x 128 Points

E_{av} [lx]	E_{min} [lx]	E_{max} [lx]	$u0$	E_{min} / E_{max}
17	5.35	31	0.306	0.172

Walmsley Associates
60 Park Road, Chorley PR7 1QU

Operator Chris Lloyd-Morley
Telephone 01257 232232
Fax
e-Mail chrism@walmsleyassociates.co.uk

Site External Lighting / Goods Loading / Isolines (E, Perpendicular)



Values in Lux, Scale 1 : 200

Position of surface in external scene:
Marked point:
(112.528 m, 236.732 m, 0.100 m)



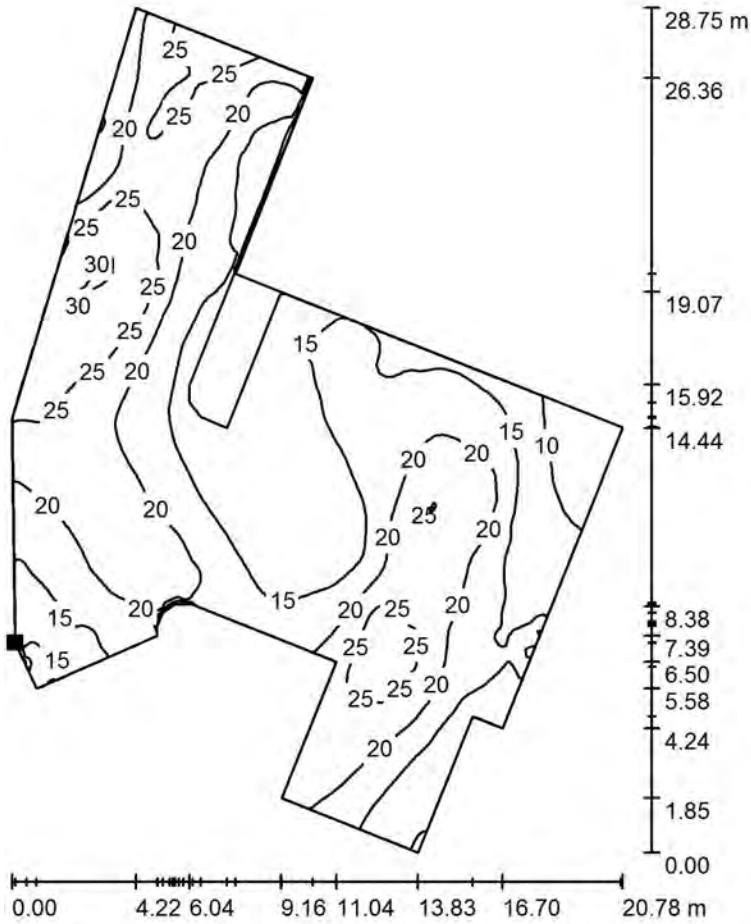
Grid: 128 x 128 Points

E_{av} [lx]	E_{min} [lx]	E_{max} [lx]	u_0	E_{min} / E_{max}
28	11	56	0.383	0.189

Walmsley Associates
60 Park Road, Chorley PR7 1QU

Operator Chris Lloyd-Morley
Telephone 01257 232232
Fax
e-Mail chrism@walmsleyassociates.co.uk

Site External Lighting / Small West Car Park & Circulation area / Isolines (E, Perpendicular)



Values in Lux, Scale 1 : 250

Position of surface in external scene:
Marked point:
(108.387 m, 215.121 m, 0.100 m)



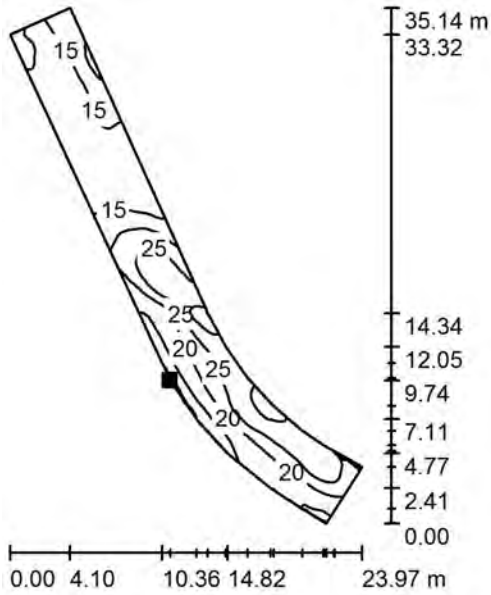
Grid: 128 x 128 Points

E_{av} [lx]	E_{min} [lx]	E_{max} [lx]	u_0	E_{min} / E_{max}
19	5.98	31	0.323	0.195

Walmsley Associates
 60 Park Road, Chorley PR7 1QU

Operator Chris Lloyd-Morley
 Telephone 01257 232232
 Fax
 e-Mail chrism@walmsleyassociates.co.uk

Site External Lighting / West Car Park Access Road / Isolines (E, Perpendicular)



Values in Lux, Scale 1 : 500

Position of surface in external scene:
 Marked point:
 (120.035 m, 189.967 m, 0.100 m)



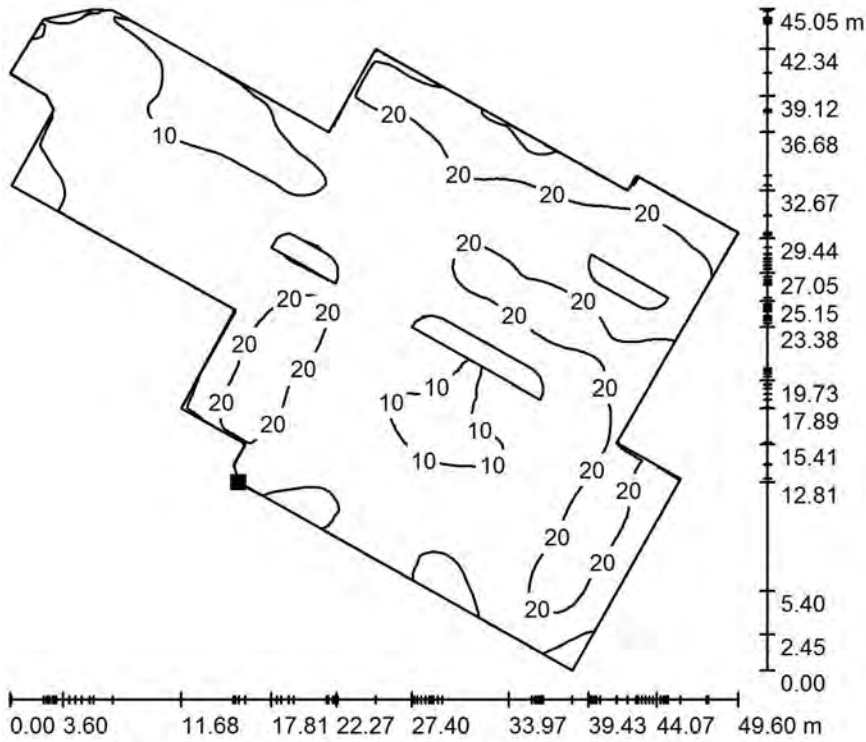
Grid: 128 x 64 Points

E_{av} [lx]	E_{min} [lx]	E_{max} [lx]	u0	E_{min} / E_{max}
19	9.93	33	0.524	0.304

Walmsley Associates
60 Park Road, Chorley PR7 1QU

Operator Chris Lloyd-Morley
Telephone 01257 232232
Fax
e-Mail chrism@walmsleyassociates.co.uk

Site External Lighting / South & Accessible Car Park / Isolines (E, Perpendicular)



Values in Lux, Scale 1 : 500

Position of surface in external scene:
Marked point:
(146.391 m, 152.496 m, 0.100 m)



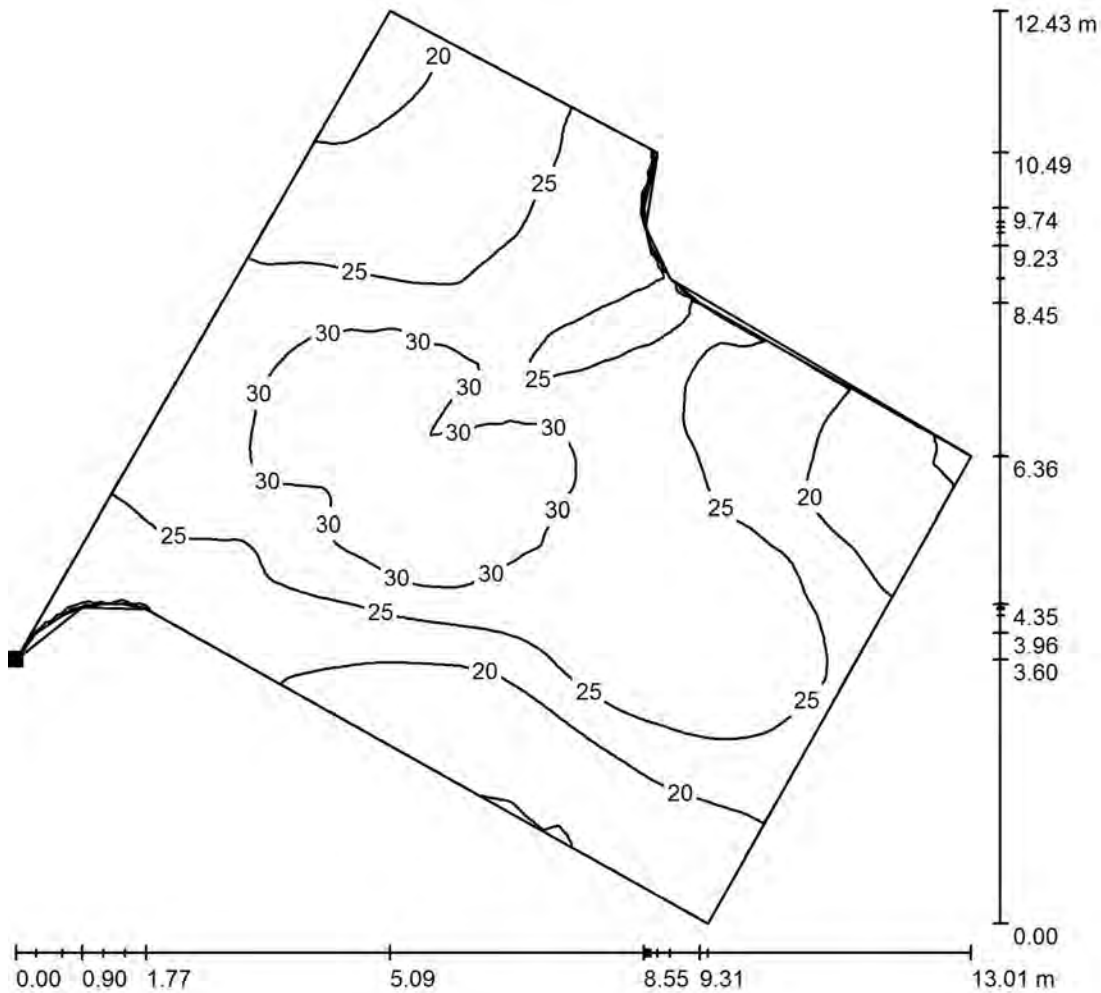
Grid: 128 x 128 Points

E_{av} [lx]	E_{min} [lx]	E_{max} [lx]	u_0	E_{min} / E_{max}
16	3.15	29	0.203	0.109

Walmsley Associates
60 Park Road, Chorley PR7 1QU

Operator Chris Lloyd-Morley
Telephone 01257 232232
Fax
e-Mail chrism@walmsleyassociates.co.uk

Site External Lighting / Main Entrance Road / Isolines (E, Perpendicular)



Values in Lux, Scale 1 : 100

Position of surface in external scene:
Marked point:
(172.137 m, 155.206 m, 0.100 m)



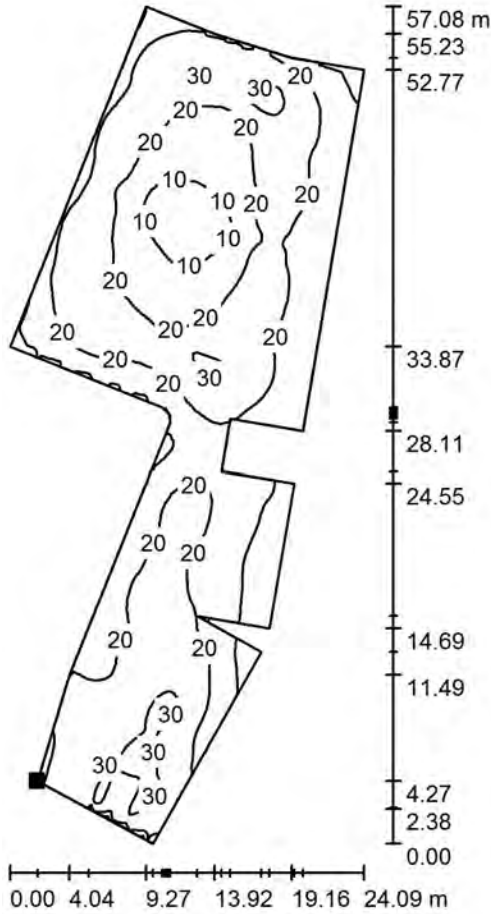
Grid: 128 x 128 Points

E_{av} [lx]	E_{min} [lx]	E_{max} [lx]	u_0	E_{min} / E_{max}
25	15	34	0.589	0.431

Walmsley Associates
60 Park Road, Chorley PR7 1QU

Operator Chris Lloyd-Morley
Telephone 01257 232232
Fax
e-Mail chrism@walmsleyassociates.co.uk

Site External Lighting / East Car Park / Isolines (E, Perpendicular)



Values in Lux, Scale 1 : 500

Position of surface in external scene:
Marked point:
(177.379 m, 163.917 m, 0.100 m)



Grid: 128 x 128 Points

E_{av} [lx]	E_{min} [lx]	E_{max} [lx]	$u0$	E_{min} / E_{max}
19	4.75	34	0.244	0.142

Walmsley Associates
 60 Park Road, Chorley PR7 1QU

Operator Chris Lloyd-Morley
 Telephone 01257 232232
 Fax
 e-Mail chrislm@walmsleyassociates.co.uk

Site External Lighting / Manor Road Vertical Plane / Isolines (E, Perpendicular)



Values in Lux, Scale 1 : 1252

Position of surface in external scene:
 Marked point:
 (59.302 m, 297.426 m, 0.000 m)



Grid: 128 x 4 Points

E_{av} [lx]	E_{min} [lx]	E_{max} [lx]	u0	E_{min} / E_{max}
1.04	0.00	7.61	0.003	0.000

Walmsley Associates
60 Park Road, Chorley PR7 1QU

Operator Chris Lloyd-Morley
Telephone 01257 232232
Fax
e-Mail chrislm@walmsleyassociates.co.uk

Site External Lighting / Manor Road Vertical Plane / Table (E, Perpendicular)

Position of surface in external scene:
Marked point:
(59.302 m, 297.426 m, 0.000 m)

- Current Selection
- Further Selections



1.750	0.18	0.20	0.22	0.24	0.28	0.31	0.35	0.39	0.65	0.64
1.250	0.18	0.20	0.22	0.24	0.28	0.31	0.35	0.39	0.65	0.78
0.750	0.26	0.29	0.33	0.37	0.42	0.48	0.56	0.58	0.86	0.92
0.250	0.26	0.29	0.33	0.37	0.42	0.48	0.56	0.69	0.98	1.04
m	0.684	2.051	3.418	4.785	6.152	7.520	8.887	10.254	11.621	12.988

Attention: The coordinates refer to the image above. Values in Lux.

Grid: 128 x 4 Points

E_{av} [lx]	E_{min} [lx]	E_{max} [lx]	u0	E_{min} / E_{max}
1.04	0.00	7.61	0.003	0.000

Walmsley Associates
60 Park Road, Chorley PR7 1QU

Operator Chris Lloyd-Morley
Telephone 01257 232232
Fax
e-Mail chrism@walmsleyassociates.co.uk

Site External Lighting / Manor Road Vertical Plane / Table (E, Perpendicular)

Position of surface in external scene:
Marked point:
(59.302 m, 297.426 m, 0.000 m)

- Current Selection
- Further Selections



1.750	0.70	0.78	0.87	1.07	1.32	1.55	1.88	1.82	1.86	1.89
1.250	0.86	0.95	1.05	1.28	1.55	1.76	2.02	1.96	2.03	2.08
0.750	1.03	1.14	1.30	1.55	1.83	2.04	2.29	2.28	2.39	2.47
0.250	1.16	1.26	1.43	1.67	1.91	2.08	2.30	2.31	2.42	2.50
m	14.355	15.723	17.090	18.457	19.824	21.191	22.559	23.926	25.293	26.660

Attention: The coordinates refer to the image above. Values in Lux.

Grid: 128 x 4 Points

E_{av} [lx]	E_{min} [lx]	E_{max} [lx]	u0	E_{min} / E_{max}
1.04	0.00	7.61	0.003	0.000

Walmsley Associates
60 Park Road, Chorley PR7 1QU

Operator Chris Lloyd-Morley
Telephone 01257 232232
Fax
e-Mail chrislm@walmsleyassociates.co.uk

Site External Lighting / Manor Road Vertical Plane / Table (E, Perpendicular)

Position of surface in external scene:
Marked point:
(59.302 m, 297.426 m, 0.000 m)

- Current Selection
- Further Selections



1.750	1.90	1.90	1.90	1.79	1.82	1.72	1.63	1.58	1.48	1.37
1.250	2.13	2.14	2.12	2.21	2.20	2.06	1.88	1.73	1.62	1.56
0.750	2.56	2.61	2.59	2.62	2.56	2.40	2.14	1.93	1.87	1.70
0.250	2.61	2.71	2.84	2.91	2.81	2.68	2.40	2.10	1.94	1.82
m	28.027	29.395	30.762	32.129	33.496	34.863	36.230	37.598	38.965	40.332

Attention: The coordinates refer to the image above. Values in Lux.

Grid: 128 x 4 Points

E_{av} [lx]	E_{min} [lx]	E_{max} [lx]	u0	E_{min} / E_{max}
1.04	0.00	7.61	0.003	0.000

Walmsley Associates
60 Park Road, Chorley PR7 1QU

Operator Chris Lloyd-Morley
Telephone 01257 232232
Fax
e-Mail chrislm@walmsleyassociates.co.uk

Site External Lighting / Manor Road Vertical Plane / Table (E, Perpendicular)

Position of surface in external scene:
Marked point:
(59.302 m, 297.426 m, 0.000 m)

- Current Selection
- Further Selections



1.750	1.68	1.63	1.54	1.52	1.52	1.61	1.68	1.80	2.12	2.57
1.250	2.07	1.77	1.70	1.68	1.67	1.61	1.68	1.98	2.54	3.05
0.750	2.01	2.17	2.24	2.14	2.23	2.30	2.42	2.60	3.01	3.69
0.250	2.10	2.26	2.24	2.14	2.23	2.30	2.54	2.72	3.31	4.04
m	41.699	43.066	44.434	45.801	47.168	48.535	49.902	51.270	52.637	54.004

Attention: The coordinates refer to the image above. Values in Lux.

Grid: 128 x 4 Points

E_{av} [lx]	E_{min} [lx]	E_{max} [lx]	u0	E_{min} / E_{max}
1.04	0.00	7.61	0.003	0.000

Walmsley Associates
60 Park Road, Chorley PR7 1QU

Operator Chris Lloyd-Morley
Telephone 01257 232232
Fax
e-Mail chrislm@walmsleyassociates.co.uk

Site External Lighting / Manor Road Vertical Plane / Table (E, Perpendicular)

Position of surface in external scene:
Marked point:
(59.302 m, 297.426 m, 0.000 m)

- Current Selection
- Further Selections



1.750	3.43	4.09	4.83	5.31	5.87	5.37	3.75	4.35	4.18	3.32
1.250	4.11	4.75	5.48	6.06	6.47	5.23	4.36	4.82	4.97	3.74
0.750	4.63	5.18	5.96	6.72	7.20	5.81	4.98	5.49	5.57	4.44
0.250	4.99	5.54	6.35	7.08	<u>7.61</u>	6.20	5.43	6.11	6.19	4.87
m	55.371	56.738	58.105	59.473	60.840	62.207	63.574	64.941	66.309	67.676

Attention: The coordinates refer to the image above. Values in Lux.

Grid: 128 x 4 Points

E_{av} [lx]	E_{min} [lx]	E_{max} [lx]	u0	E_{min} / E_{max}
1.04	0.00	7.61	0.003	0.000

Walmsley Associates
60 Park Road, Chorley PR7 1QU

Operator Chris Lloyd-Morley
Telephone 01257 232232
Fax
e-Mail chrism@walmsleyassociates.co.uk

Site External Lighting / Manor Road Vertical Plane / Table (E, Perpendicular)

Position of surface in external scene:
Marked point:
(59.302 m, 297.426 m, 0.000 m)

- Current Selection
- Further Selections



1.750	2.94	2.32	1.69	1.28	1.10	1.02	0.41	0.28	0.21	0.17
1.250	3.25	2.58	1.92	1.44	1.20	1.02	0.41	0.28	0.21	0.17
0.750	3.67	2.92	2.17	1.63	1.35	1.23	0.59	0.43	0.33	0.27
0.250	4.01	3.07	2.30	1.77	1.43	1.23	0.59	0.43	0.33	0.27
m	69.043	70.410	71.777	73.145	74.512	75.879	77.246	78.613	79.980	81.348

Attention: The coordinates refer to the image above. Values in Lux.

Grid: 128 x 4 Points

E_{av} [lx]	E_{min} [lx]	E_{max} [lx]	u0	E_{min} / E_{max}
1.04	0.00	7.61	0.003	0.000

Walmsley Associates
60 Park Road, Chorley PR7 1QU

Operator Chris Lloyd-Morley
Telephone 01257 232232
Fax
e-Mail chrism@walmsleyassociates.co.uk

Site External Lighting / Manor Road Vertical Plane / Table (E, Perpendicular)

Position of surface in external scene:
Marked point:
(59.302 m, 297.426 m, 0.000 m)

- Current Selection
- Further Selections



1.750	0.14	0.12	0.11	0.10	0.04	0.04	0.03	0.03	0.02	0.02
1.250	0.14	0.12	0.11	0.10	0.04	0.04	0.03	0.03	0.02	0.02
0.750	0.22	0.18	0.16	0.14	0.04	0.04	0.03	0.03	0.02	0.02
0.250	0.22	0.18	0.16	0.14	0.04	0.04	0.03	0.03	0.02	0.02
m	82.715	84.082	85.449	86.816	88.184	89.551	90.918	92.285	93.652	95.020

Attention: The coordinates refer to the image above. Values in Lux.

Grid: 128 x 4 Points

E_{av} [lx]	E_{min} [lx]	E_{max} [lx]	u0	E_{min} / E_{max}
1.04	0.00	7.61	0.003	0.000

Walmsley Associates
60 Park Road, Chorley PR7 1QU

Operator Chris Lloyd-Morley
Telephone 01257 232232
Fax
e-Mail chrism@walmsleyassociates.co.uk

Site External Lighting / Manor Road Vertical Plane / Table (E, Perpendicular)

Position of surface in external scene:
Marked point:
(59.302 m, 297.426 m, 0.000 m)

- Current Selection
- Further Selections



1.750	0.02	0.02	0.01	0.01	0.01	0.01	0.01	0.01	0.01	0.01	0.01
1.250	0.02	0.02	0.01	0.01	0.01	0.01	0.01	0.01	0.01	0.01	0.01
0.750	0.02	0.02	0.01	0.01	0.01	0.01	0.01	0.01	0.01	0.01	0.01
0.250	0.02	0.02	0.01	0.01	0.01	0.01	0.01	0.01	0.01	0.01	0.01
m	96.387	97.754	99.121	100.488	101.855	103.223	104.590	105.957	107.324	108.691	

Attention: The coordinates refer to the image above. Values in Lux.

Grid: 128 x 4 Points

E_{av} [lx]	E_{min} [lx]	E_{max} [lx]	u0	E_{min} / E_{max}
1.04	0.00	7.61	0.003	0.000

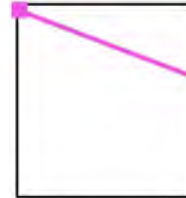
Walmsley Associates
60 Park Road, Chorley PR7 1QU

Operator Chris Lloyd-Morley
Telephone 01257 232232
Fax
e-Mail chrislm@walmsleyassociates.co.uk

Site External Lighting / Manor Road Vertical Plane / Table (E, Perpendicular)

Position of surface in external scene:
Marked point:
(59.302 m, 297.426 m, 0.000 m)

- Current Selection
- Further Selections



1.750	<u>0.00</u>	<u>0.00</u>	<u>0.00</u>	<u>0.00</u>	<u>0.00</u>	<u>0.00</u>	<u>0.00</u>	<u>0.00</u>	<u>0.00</u>	<u>0.00</u>
1.250	<u>0.00</u>	<u>0.00</u>	<u>0.00</u>	<u>0.00</u>	<u>0.00</u>	<u>0.00</u>	<u>0.00</u>	<u>0.00</u>	<u>0.00</u>	<u>0.00</u>
0.750	<u>0.00</u>	<u>0.00</u>	<u>0.00</u>	<u>0.00</u>	<u>0.00</u>	<u>0.00</u>	<u>0.00</u>	<u>0.00</u>	<u>0.00</u>	<u>0.00</u>
0.250	<u>0.00</u>	<u>0.00</u>	<u>0.00</u>	<u>0.00</u>	<u>0.00</u>	<u>0.00</u>	<u>0.00</u>	<u>0.00</u>	<u>0.00</u>	<u>0.00</u>
m	110.059	111.426	112.793	114.160	115.527	116.895	118.262	119.629	120.996	122.363

Attention: The coordinates refer to the image above. Values in Lux.

Grid: 128 x 4 Points

E_{av} [lx]	E_{min} [lx]	E_{max} [lx]	u0	E_{min} / E_{max}
1.04	0.00	7.61	0.003	0.000

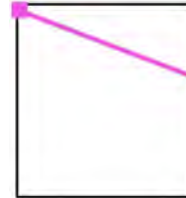
Walmsley Associates
60 Park Road, Chorley PR7 1QU

Operator Chris Lloyd-Morley
Telephone 01257 232232
Fax
e-Mail chrislm@walmsleyassociates.co.uk

Site External Lighting / Manor Road Vertical Plane / Table (E, Perpendicular)

Position of surface in external scene:
Marked point:
(59.302 m, 297.426 m, 0.000 m)

- Current Selection
- Further Selections



1.750	<u>0.00</u>	<u>0.00</u>	<u>0.00</u>	<u>0.00</u>	<u>0.00</u>	<u>0.00</u>	<u>0.00</u>	<u>0.00</u>	<u>0.00</u>	<u>0.00</u>
1.250	<u>0.00</u>	<u>0.00</u>	<u>0.00</u>	<u>0.00</u>	<u>0.00</u>	<u>0.00</u>	<u>0.00</u>	<u>0.00</u>	<u>0.00</u>	<u>0.00</u>
0.750	<u>0.00</u>	<u>0.00</u>	<u>0.00</u>	<u>0.00</u>	<u>0.00</u>	<u>0.00</u>	<u>0.00</u>	<u>0.00</u>	<u>0.00</u>	<u>0.00</u>
0.250	<u>0.00</u>	<u>0.00</u>	<u>0.00</u>	<u>0.00</u>	<u>0.00</u>	<u>0.00</u>	<u>0.00</u>	<u>0.00</u>	<u>0.00</u>	<u>0.00</u>
m	123.730	125.098	126.465	127.832	129.199	130.566	131.934	133.301	134.668	136.035

Attention: The coordinates refer to the image above. Values in Lux.

Grid: 128 x 4 Points

E_{av} [lx]	E_{min} [lx]	E_{max} [lx]	u0	E_{min} / E_{max}
1.04	0.00	7.61	0.003	0.000

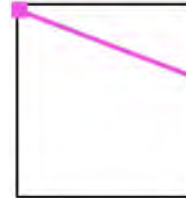
Walmsley Associates
60 Park Road, Chorley PR7 1QU

Operator Chris Lloyd-Morley
Telephone 01257 232232
Fax
e-Mail chrislm@walmsleyassociates.co.uk

Site External Lighting / Manor Road Vertical Plane / Table (E, Perpendicular)

Position of surface in external scene:
Marked point:
(59.302 m, 297.426 m, 0.000 m)

- Current Selection
- Further Selections



1.750	<u>0.00</u>	<u>0.00</u>	<u>0.00</u>	<u>0.00</u>	<u>0.00</u>	<u>0.00</u>	<u>0.00</u>	<u>0.00</u>	<u>0.00</u>	<u>0.00</u>	<u>0.00</u>
1.250	<u>0.00</u>	<u>0.00</u>	<u>0.00</u>	<u>0.00</u>	<u>0.00</u>	<u>0.00</u>	<u>0.00</u>	<u>0.00</u>	<u>0.00</u>	<u>0.00</u>	<u>0.00</u>
0.750	<u>0.00</u>	<u>0.00</u>	<u>0.00</u>	<u>0.00</u>	<u>0.00</u>	<u>0.00</u>	<u>0.00</u>	<u>0.00</u>	<u>0.00</u>	<u>0.00</u>	<u>0.00</u>
0.250	<u>0.00</u>	<u>0.00</u>	<u>0.00</u>	<u>0.00</u>	<u>0.00</u>	<u>0.00</u>	<u>0.00</u>	<u>0.00</u>	<u>0.00</u>	<u>0.00</u>	<u>0.00</u>
m	137.402	138.770	140.137	141.504	142.871	144.238	145.605	146.973	148.340	149.707	

Attention: The coordinates refer to the image above. Values in Lux.

Grid: 128 x 4 Points

E_{av} [lx]	E_{min} [lx]	E_{max} [lx]	u0	E_{min} / E_{max}
1.04	0.00	7.61	0.003	0.000

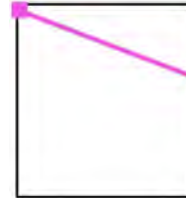
Walmsley Associates
60 Park Road, Chorley PR7 1QU

Operator Chris Lloyd-Morley
Telephone 01257 232232
Fax
e-Mail chrislm@walmsleyassociates.co.uk

Site External Lighting / Manor Road Vertical Plane / Table (E, Perpendicular)

Position of surface in external scene:
Marked point:
(59.302 m, 297.426 m, 0.000 m)

- Current Selection
- Further Selections



1.750	<u>0.00</u>	<u>0.00</u>	0.06	0.06	0.07	0.07	0.07	0.07	0.07	0.07	0.07
1.250	<u>0.00</u>	<u>0.00</u>	0.06	0.06	0.07	0.07	0.07	0.07	0.07	0.07	0.07
0.750	<u>0.00</u>	<u>0.00</u>	0.06	0.06	0.07	0.07	0.07	0.07	0.07	0.07	0.07
0.250	<u>0.00</u>	<u>0.00</u>	0.06	0.06	0.07	0.07	0.07	0.07	0.07	0.07	0.07
m	151.074	152.441	153.809	155.176	156.543	157.910	159.277	160.645	162.012	163.379	

Attention: The coordinates refer to the image above. Values in Lux.

Grid: 128 x 4 Points

E_{av} [lx]	E_{min} [lx]	E_{max} [lx]	u0	E_{min} / E_{max}
1.04	0.00	7.61	0.003	0.000

Walmsley Associates
60 Park Road, Chorley PR7 1QU

Operator Chris Lloyd-Morley
Telephone 01257 232232
Fax
e-Mail chrislm@walmsleyassociates.co.uk

Site External Lighting / Manor Road Vertical Plane / Table (E, Perpendicular)

Position of surface in external scene:
Marked point:
(59.302 m, 297.426 m, 0.000 m)

- Current Selection
- Further Selections



1.750	0.10	0.10	0.09	0.09	0.09	0.09	0.09	0.09
1.250	0.10	0.10	0.09	0.09	0.09	0.09	0.09	0.09
0.750	0.10	0.10	0.09	0.09	0.09	0.09	0.09	0.09
0.250	0.10	0.10	0.09	0.09	0.09	0.09	0.09	0.09
m	164.746	166.113	167.480	168.848	170.215	171.582	172.949	174.316

Attention: The coordinates refer to the image above. Values in Lux.

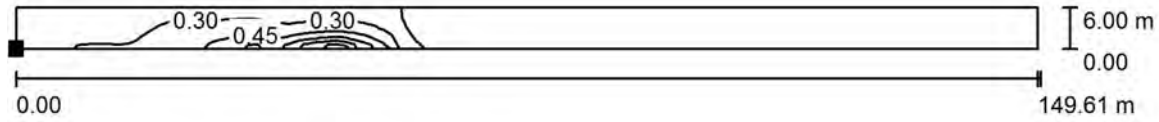
Grid: 128 x 4 Points

E_{av} [lx]	E_{min} [lx]	E_{max} [lx]	u0	E_{min} / E_{max}
1.04	0.00	7.61	0.003	0.000

Walmsley Associates
 60 Park Road, Chorley PR7 1QU

Operator Chris Lloyd-Morley
 Telephone 01257 232232
 Fax
 e-Mail chrism@walmsleyassociates.co.uk

Site External Lighting / Manor Road Vertical Plane at houses / Isolines (E, Perpendicular)



Values in Lux, Scale 1 : 1070

Position of surface in external scene:
 Marked point:
 (82.368 m, 301.583 m, 0.000 m)



Grid: 128 x 4 Points

E_{av} [lx]	E_{min} [lx]	E_{max} [lx]	u0	E_{min} / E_{max}
0.14	0.01	0.75	0.049	0.009

Walmsley Associates
60 Park Road, Chorley PR7 1QU

Operator Chris Lloyd-Morley
Telephone 01257 232232
Fax
e-Mail chrislm@walmsleyassociates.co.uk

Site External Lighting / Manor Road Vertical Plane at houses / Table (E, Perpendicular)

Position of surface in external scene:
Marked point:
(82.368 m, 301.583 m, 0.000 m)

- Current Selection
- Further Selections



5.250	0.04	0.04	0.04	0.04	0.04	0.04	0.04	0.04	0.04	0.04
3.750	0.04	0.04	0.04	0.04	0.04	0.04	0.04	0.04	0.04	0.04
2.250	0.04	0.04	0.04	0.04	0.04	0.04	0.04	0.04	0.04	0.04
0.750	0.04	0.04	0.04	0.04	0.04	0.04	0.04	0.04	0.04	0.04
m	0.584	1.753	2.922	4.091	5.260	6.428	7.597	8.766	9.935	11.104

Attention: The coordinates refer to the image above. Values in Lux.

Grid: 128 x 4 Points

E_{av} [lx]	E_{min} [lx]	E_{max} [lx]	$u0$	E_{min} / E_{max}
0.14	0.01	0.75	0.049	0.009

Walmsley Associates
60 Park Road, Chorley PR7 1QU

Operator Chris Lloyd-Morley
Telephone 01257 232232
Fax
e-Mail chrislm@walmsleyassociates.co.uk

Site External Lighting / Manor Road Vertical Plane at houses / Table (E, Perpendicular)

Position of surface in external scene:
Marked point:
(82.368 m, 301.583 m, 0.000 m)

- Current Selection
- Further Selections



5.250	0.04	0.04	0.04	0.04	0.04	0.04	<u>0.01</u>	<u>0.01</u>	<u>0.01</u>	<u>0.01</u>
3.750	0.04	0.04	0.04	0.04	0.04	0.04	<u>0.01</u>	<u>0.01</u>	<u>0.01</u>	<u>0.01</u>
2.250	0.04	0.04	0.04	0.04	0.04	0.04	<u>0.01</u>	<u>0.01</u>	<u>0.01</u>	<u>0.01</u>
0.750	0.04	0.04	0.04	0.04	0.04	0.04	<u>0.01</u>	<u>0.01</u>	<u>0.01</u>	<u>0.01</u>
m	12.272	13.441	14.610	15.779	16.948	18.116	19.285	20.454	21.623	22.792

Attention: The coordinates refer to the image above. Values in Lux.

Grid: 128 x 4 Points

E_{av} [lx]	E_{min} [lx]	E_{max} [lx]	u_0	E_{min} / E_{max}
0.14	0.01	0.75	0.049	0.009

Walmsley Associates
60 Park Road, Chorley PR7 1QU

Operator Chris Lloyd-Morley
Telephone 01257 232232
Fax
e-Mail chrislm@walmsleyassociates.co.uk

Site External Lighting / Manor Road Vertical Plane at houses / Table (E, Perpendicular)



5.250	<u>0.01</u>	<u>0.01</u>	<u>0.01</u>	<u>0.01</u>	<u>0.01</u>	<u>0.01</u>	<u>0.01</u>	<u>0.01</u>	<u>0.01</u>	<u>0.01</u>
3.750	<u>0.01</u>	<u>0.01</u>	<u>0.01</u>	<u>0.01</u>	<u>0.01</u>	<u>0.01</u>	<u>0.01</u>	<u>0.01</u>	<u>0.01</u>	<u>0.01</u>
2.250	<u>0.01</u>	<u>0.01</u>	<u>0.01</u>	<u>0.01</u>	<u>0.01</u>	<u>0.01</u>	<u>0.01</u>	<u>0.01</u>	<u>0.01</u>	<u>0.01</u>
0.750	<u>0.01</u>	<u>0.01</u>	<u>0.01</u>	<u>0.01</u>	<u>0.01</u>	<u>0.01</u>	<u>0.01</u>	<u>0.01</u>	<u>0.01</u>	<u>0.01</u>
m	23.960	25.129	26.298	27.467	28.635	29.804	30.973	32.142	33.311	34.479

Attention: The coordinates refer to the image above. Values in Lux.

Grid: 128 x 4 Points

E_{av} [lx]	E_{min} [lx]	E_{max} [lx]	u0	E_{min} / E_{max}
0.14	0.01	0.75	0.049	0.009

Walmsley Associates
60 Park Road, Chorley PR7 1QU

Operator Chris Lloyd-Morley
Telephone 01257 232232
Fax
e-Mail chrislm@walmsleyassociates.co.uk

Site External Lighting / Manor Road Vertical Plane at houses / Table (E, Perpendicular)

Position of surface in external scene:
Marked point:
(82.368 m, 301.583 m, 0.000 m)

- Current Selection
- Further Selections



5.250	<u>0.01</u>	<u>0.01</u>	<u>0.01</u>	<u>0.01</u>	<u>0.01</u>	<u>0.01</u>	<u>0.01</u>	<u>0.01</u>	<u>0.01</u>	<u>0.01</u>
3.750	<u>0.01</u>	<u>0.01</u>	<u>0.01</u>	<u>0.01</u>	<u>0.01</u>	<u>0.01</u>	<u>0.01</u>	<u>0.01</u>	<u>0.01</u>	<u>0.01</u>
2.250	<u>0.01</u>	<u>0.01</u>	<u>0.01</u>	<u>0.01</u>	<u>0.01</u>	<u>0.01</u>	<u>0.01</u>	<u>0.01</u>	<u>0.01</u>	<u>0.01</u>
0.750	<u>0.01</u>	<u>0.01</u>	<u>0.01</u>	<u>0.01</u>	<u>0.01</u>	<u>0.01</u>	<u>0.01</u>	<u>0.01</u>	<u>0.01</u>	<u>0.01</u>
m	35.648	36.817	37.986	39.155	40.323	41.492	42.661	43.830	44.999	46.167

Attention: The coordinates refer to the image above. Values in Lux.

Grid: 128 x 4 Points

E_{av} [lx]	E_{min} [lx]	E_{max} [lx]	u_0	E_{min} / E_{max}
0.14	0.01	0.75	0.049	0.009

Walmsley Associates
60 Park Road, Chorley PR7 1QU

Operator Chris Lloyd-Morley
Telephone 01257 232232
Fax
e-Mail chrislm@walmsleyassociates.co.uk

Site External Lighting / Manor Road Vertical Plane at houses / Table (E, Perpendicular)



5.250	<u>0.01</u>	<u>0.01</u>	<u>0.01</u>	<u>0.01</u>	<u>0.01</u>	<u>0.01</u>	<u>0.01</u>	<u>0.01</u>	0.02	0.02
3.750	<u>0.01</u>	<u>0.01</u>	<u>0.01</u>	<u>0.01</u>	<u>0.01</u>	<u>0.01</u>	<u>0.01</u>	<u>0.01</u>	0.02	0.02
2.250	<u>0.01</u>	<u>0.01</u>	<u>0.01</u>	<u>0.01</u>	<u>0.01</u>	<u>0.01</u>	<u>0.01</u>	<u>0.01</u>	0.02	0.02
0.750	<u>0.01</u>	<u>0.01</u>	<u>0.01</u>	<u>0.01</u>	<u>0.01</u>	<u>0.01</u>	<u>0.01</u>	<u>0.01</u>	0.02	0.02
m	47.336	48.505	49.674	50.843	52.011	53.180	54.349	55.518	56.687	57.855

Attention: The coordinates refer to the image above. Values in Lux.

Grid: 128 x 4 Points

E_{av} [lx]	E_{min} [lx]	E_{max} [lx]	u0	E_{min} / E_{max}
0.14	0.01	0.75	0.049	0.009

Walmsley Associates
60 Park Road, Chorley PR7 1QU

Operator Chris Lloyd-Morley
Telephone 01257 232232
Fax
e-Mail chrislm@walmsleyassociates.co.uk

Site External Lighting / Manor Road Vertical Plane at houses / Table (E, Perpendicular)



5.250	0.02	0.02	0.02	0.02	0.02	0.02	0.02	0.02	0.02	0.02
3.750	0.02	0.02	0.02	0.02	0.02	0.02	0.02	0.02	0.02	0.02
2.250	0.02	0.02	0.02	0.02	0.02	0.02	0.02	0.02	0.02	0.02
0.750	0.02	0.02	0.02	0.02	0.02	0.02	0.02	0.02	0.02	0.02
m	59.024	60.193	61.362	62.531	63.699	64.868	66.037	67.206	68.375	69.543

Attention: The coordinates refer to the image above. Values in Lux.

Grid: 128 x 4 Points

E_{av} [lx]	E_{min} [lx]	E_{max} [lx]	u0	E_{min} / E_{max}
0.14	0.01	0.75	0.049	0.009

Walmsley Associates
60 Park Road, Chorley PR7 1QU

Operator Chris Lloyd-Morley
Telephone 01257 232232
Fax
e-Mail chrislm@walmsleyassociates.co.uk

Site External Lighting / Manor Road Vertical Plane at houses / Table (E, Perpendicular)



5.250	0.02	0.02	0.02	0.02	0.08	0.08	0.08	0.08	0.09	0.09
3.750	0.02	0.02	0.02	0.02	0.08	0.08	0.08	0.08	0.09	0.09
2.250	0.02	0.02	0.02	0.02	0.07	0.07	0.07	0.07	0.08	0.08
0.750	0.02	0.02	0.02	0.02	0.07	0.07	0.07	0.07	0.08	0.08
m	70.712	71.881	73.050	74.218	75.387	76.556	77.725	78.894	80.062	81.231

Attention: The coordinates refer to the image above. Values in Lux.

Grid: 128 x 4 Points

E_{av} [lx]	E_{min} [lx]	E_{max} [lx]	$u0$	E_{min} / E_{max}
0.14	0.01	0.75	0.049	0.009

Walmsley Associates
60 Park Road, Chorley PR7 1QU

Operator Chris Lloyd-Morley
Telephone 01257 232232
Fax
e-Mail chrislm@walmsleyassociates.co.uk

Site External Lighting / Manor Road Vertical Plane at houses / Table (E, Perpendicular)



5.250	0.09	0.09	0.10	0.10	0.11	0.11	0.15	0.15	0.19	0.19
3.750	0.09	0.09	0.10	0.10	0.10	0.10	0.11	0.11	0.12	0.12
2.250	0.08	0.08	0.08	0.08	0.08	0.08	0.09	0.09	0.09	0.09
0.750	0.08	0.08	0.08	0.08	0.08	0.08	0.08	0.08	0.08	0.08
m	82.400	83.569	84.738	85.906	87.075	88.244	89.413	90.582	91.750	92.919

Attention: The coordinates refer to the image above. Values in Lux.

Grid: 128 x 4 Points

E_{av} [lx]	E_{min} [lx]	E_{max} [lx]	u_0	E_{min} / E_{max}
0.14	0.01	0.75	0.049	0.009

Walmsley Associates
60 Park Road, Chorley PR7 1QU

Operator Chris Lloyd-Morley
Telephone 01257 232232
Fax
e-Mail chrislm@walmsleyassociates.co.uk

Site External Lighting / Manor Road Vertical Plane at houses / Table (E, Perpendicular)



5.250	0.34	0.40	0.46	0.51	0.58	0.62	0.70	<u>0.75</u>	<u>0.75</u>	0.70
3.750	0.27	0.29	0.32	0.33	0.35	0.36	0.38	0.39	0.39	0.38
2.250	0.25	0.25	0.26	0.26	0.28	0.28	0.28	0.28	0.28	0.28
0.750	0.24	0.24	0.25	0.25	0.25	0.25	0.25	0.25	0.25	0.25
m	94.088	95.257	96.426	97.594	98.763	99.932	101.101	102.270	103.438	104.607

Attention: The coordinates refer to the image above. Values in Lux.

Grid: 128 x 4 Points

E_{av} [lx]	E_{min} [lx]	E_{max} [lx]	$u0$	E_{min} / E_{max}
0.14	0.01	0.75	0.049	0.009

Walmsley Associates
60 Park Road, Chorley PR7 1QU

Operator Chris Lloyd-Morley
Telephone 01257 232232
Fax
e-Mail chrislm@walmsleyassociates.co.uk

Site External Lighting / Manor Road Vertical Plane at houses / Table (E, Perpendicular)



5.250	0.72	0.68	0.58	0.55	0.48	0.46	0.54	0.54	0.56	0.55
3.750	0.39	0.37	0.35	0.35	0.32	0.32	0.38	0.38	0.38	0.38
2.250	0.28	0.28	0.28	0.28	0.26	0.26	0.29	0.29	0.29	0.29
0.750	0.25	0.25	0.24	0.24	0.24	0.24	0.28	0.28	0.28	0.28
m	105.776	106.945	108.114	109.282	110.451	111.620	112.789	113.958	115.126	116.295

Attention: The coordinates refer to the image above. Values in Lux.

Grid: 128 x 4 Points

E_{av} [lx]	E_{min} [lx]	E_{max} [lx]	u_0	E_{min} / E_{max}
0.14	0.01	0.75	0.049	0.009

Walmsley Associates
60 Park Road, Chorley PR7 1QU

Operator Chris Lloyd-Morley
Telephone 01257 232232
Fax
e-Mail chrislm@walmsleyassociates.co.uk

Site External Lighting / Manor Road Vertical Plane at houses / Table (E, Perpendicular)



5.250	0.53	0.52	0.47	0.46	0.44	0.44	0.43	0.43	0.39	0.39
3.750	0.38	0.38	0.36	0.36	0.35	0.35	0.35	0.35	0.34	0.34
2.250	0.29	0.29	0.29	0.29	0.29	0.29	0.29	0.29	0.28	0.28
0.750	0.28	0.28	0.28	0.28	0.27	0.27	0.28	0.28	0.28	0.28
m	117.464	118.633	119.802	120.970	122.139	123.308	124.477	125.645	126.814	127.983

Attention: The coordinates refer to the image above. Values in Lux.

Grid: 128 x 4 Points

E_{av} [lx]	E_{min} [lx]	E_{max} [lx]	$u0$	E_{min} / E_{max}
0.14	0.01	0.75	0.049	0.009

Walmsley Associates
60 Park Road, Chorley PR7 1QU

Operator Chris Lloyd-Morley
Telephone 01257 232232
Fax
e-Mail chrislm@walmsleyassociates.co.uk

Site External Lighting / Manor Road Vertical Plane at houses / Table (E, Perpendicular)



5.250	0.39	0.39	0.31	0.31	0.31	0.31	0.32	0.32	0.32	0.32
3.750	0.33	0.33	0.25	0.25	0.25	0.25	0.25	0.25	0.25	0.25
2.250	0.28	0.28	0.21	0.21	0.21	0.21	0.21	0.21	0.21	0.21
0.750	0.28	0.28	0.20	0.20	0.20	0.20	0.21	0.21	0.21	0.21
m	129.152	130.321	131.489	132.658	133.827	134.996	136.165	137.333	138.502	139.671

Attention: The coordinates refer to the image above. Values in Lux.

Grid: 128 x 4 Points

E_{av} [lx]	E_{min} [lx]	E_{max} [lx]	u_0	E_{min} / E_{max}
0.14	0.01	0.75	0.049	0.009

Walmsley Associates
60 Park Road, Chorley PR7 1QU

Operator Chris Lloyd-Morley
Telephone 01257 232232
Fax
e-Mail chrislm@walmsleyassociates.co.uk

Site External Lighting / Manor Road Vertical Plane at houses / Table (E, Perpendicular)



5.250	0.31	0.31	0.30	0.30	0.30	0.30	0.30	0.30
3.750	0.24	0.24	0.24	0.24	0.24	0.24	0.24	0.24
2.250	0.21	0.21	0.21	0.21	0.20	0.20	0.20	0.20
0.750	0.21	0.21	0.21	0.21	0.20	0.20	0.20	0.20
m	140.840	142.009	143.177	144.346	145.515	146.684	147.853	149.021

Attention: The coordinates refer to the image above. Values in Lux.

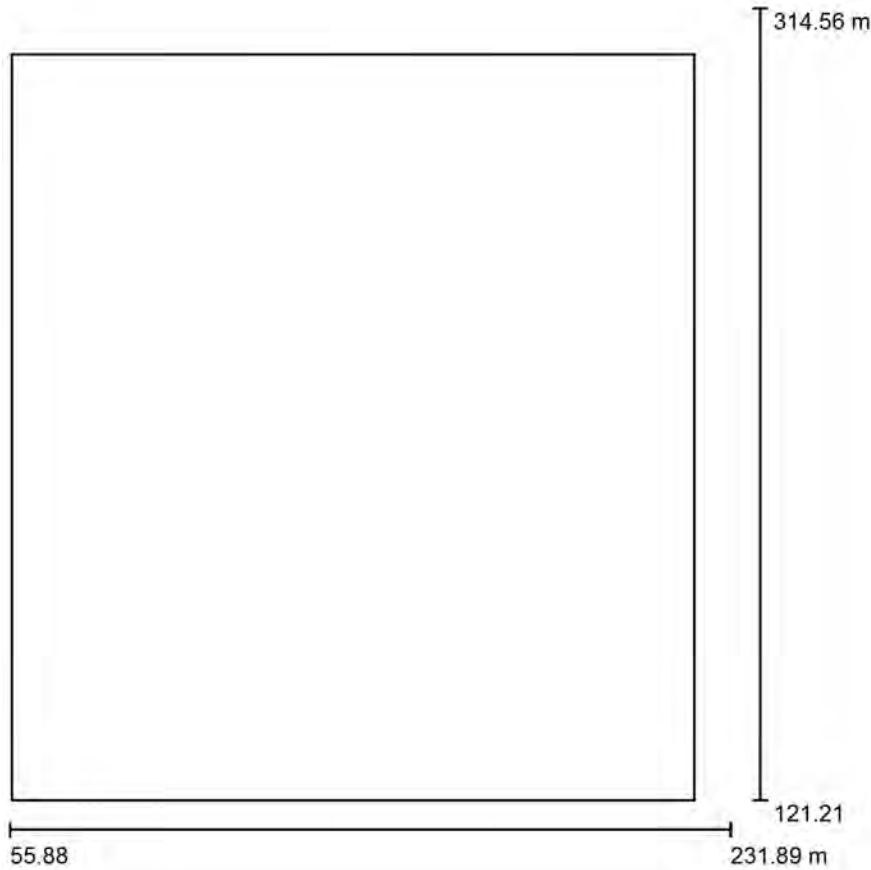
Grid: 128 x 4 Points

E_{av} [lx]	E_{min} [lx]	E_{max} [lx]	u_0	E_{min} / E_{max}
0.14	0.01	0.75	0.049	0.009

Walmsley Associates
60 Park Road, Chorley PR7 1QU

Operator Chris Lloyd-Morley
Telephone 01257 232232
Fax
e-Mail chrislm@walmsleyassociates.co.uk

Site External Lighting with Foliage / Planning data



Maintenance factor: 0.80, ULR (Upward Light Ratio): 0.5%

Scale 1:1793

Luminaire Parts List

No.	Pieces	Designation (Correction Factor)	Φ (Luminaire) [lm]	Φ (Lamps) [lm]	P [W]
1	4	Whitcroft Lighting SWTLH24KM Spectre Wall (1.000)	3527	3527	29.0
2	28	WHITCROFT SIPSH14K SIROCCO PARK (1.000)	4976	4976	52.0
Total:			153431	Total: 153436	1572.0

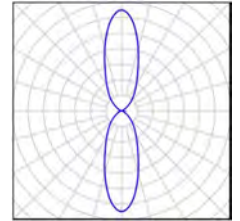
Walmsley Associates
60 Park Road, Chorley PR7 1QU

Operator Chris Lloyd-Morley
Telephone 01257 232232
Fax
e-Mail chrism@walmsleyassociates.co.uk

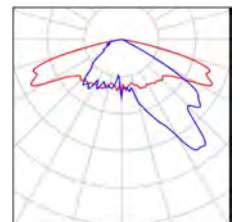
Site External Lighting with Foliage / Luminaire parts list

4 Pieces Whitecroft Lighting SWTLH24KM Spectre Wall
Article No.: SWTLH24KM
Luminous flux (Luminaire): 3527 lm
Luminous flux (Lamps): 3527 lm
Luminaire Wattage: 29.0 W
Luminaire classification according to CIE: 50
CIE flux code: 77 96 99 50 100
Fitting: 1 x LED (Correction Factor 1.000).

See our luminaire catalog
for an image of the
luminaire.



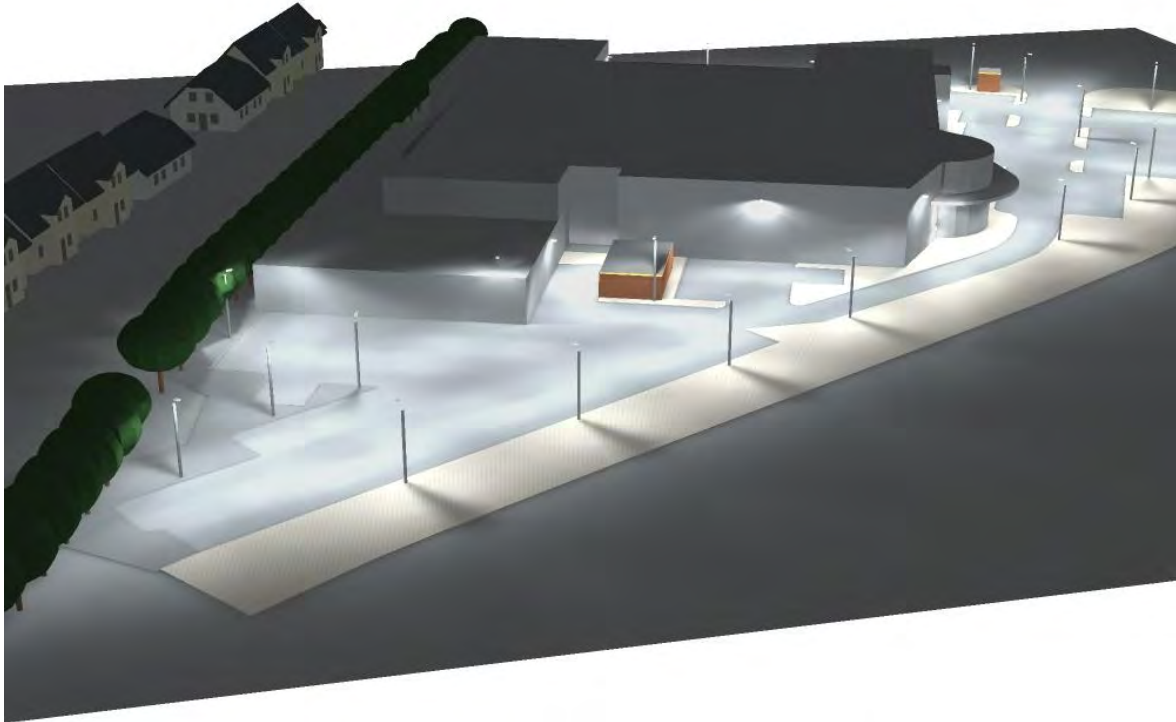
28 Pieces WHITECROFT SIPSH14K SIROCCO PARK
Article No.: SIPSH14K
Luminous flux (Luminaire): 4976 lm
Luminous flux (Lamps): 4976 lm
Luminaire Wattage: 52.0 W
Luminaire classification according to CIE: 100
CIE flux code: 31 72 97 100 100
Fitting: 1 x LED (Correction Factor 1.000).



Walmsley Associates
60 Park Road, Chorley PR7 1QU

Operator Chris Lloyd-Morley
Telephone 01257 232232
Fax
e-Mail chrism@walmsleyassociates.co.uk

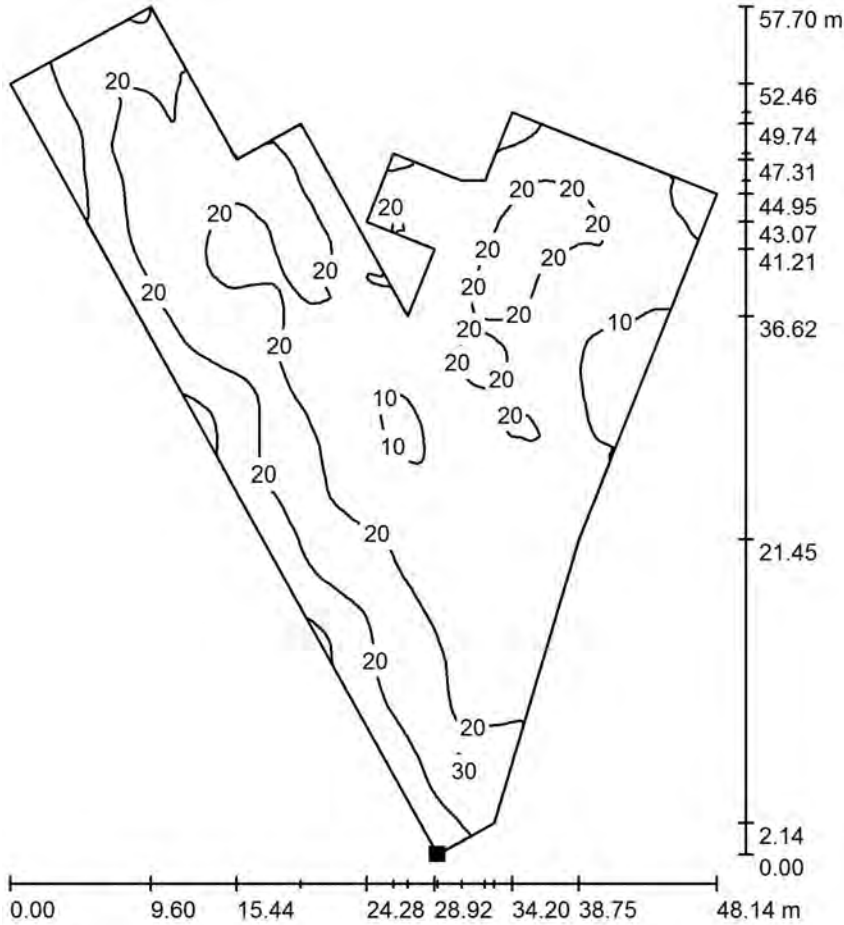
Site External Lighting with Foliage / 3D Rendering



Walmsley Associates
60 Park Road, Chorley PR7 1QU

Operator Chris Lloyd-Morley
Telephone 01257 232232
Fax
e-Mail chrism@walmsleyassociates.co.uk

Site External Lighting with Foliage / West Car Park / Isolines (E, Perpendicular)



Values in Lux, Scale 1 : 500

Position of surface in external scene:
Marked point:
(104.424 m, 220.627 m, 0.100 m)



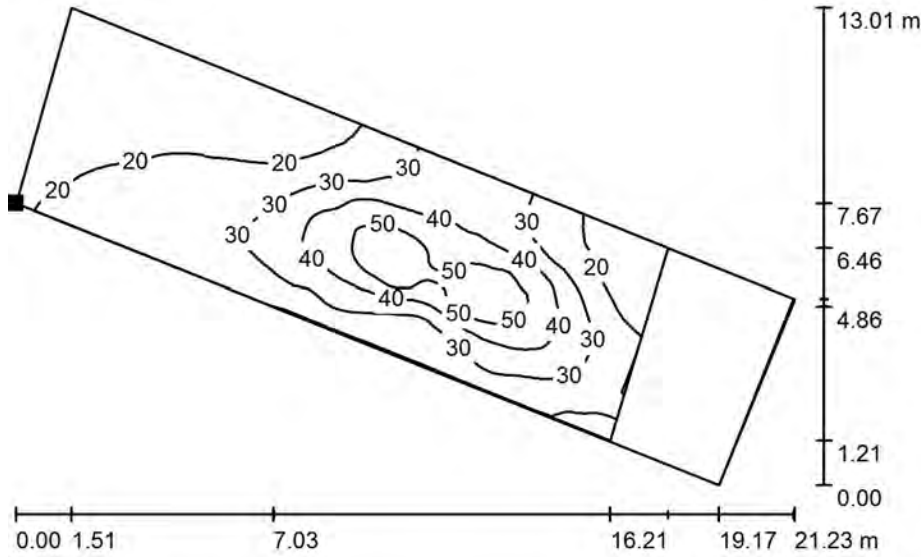
Grid: 128 x 128 Points

E_{av} [lx]	E_{min} [lx]	E_{max} [lx]	u0	E_{min} / E_{max}
18	3.44	31	0.197	0.111

Walmsley Associates
60 Park Road, Chorley PR7 1QU

Operator Chris Lloyd-Morley
Telephone 01257 232232
Fax
e-Mail chrism@walmsleyassociates.co.uk

Site External Lighting with Foliage / Goods Loading / Isolines (E, Perpendicular)



Values in Lux, Scale 1 : 200

Position of surface in external scene:
Marked point:
(112.528 m, 236.732 m, 0.100 m)



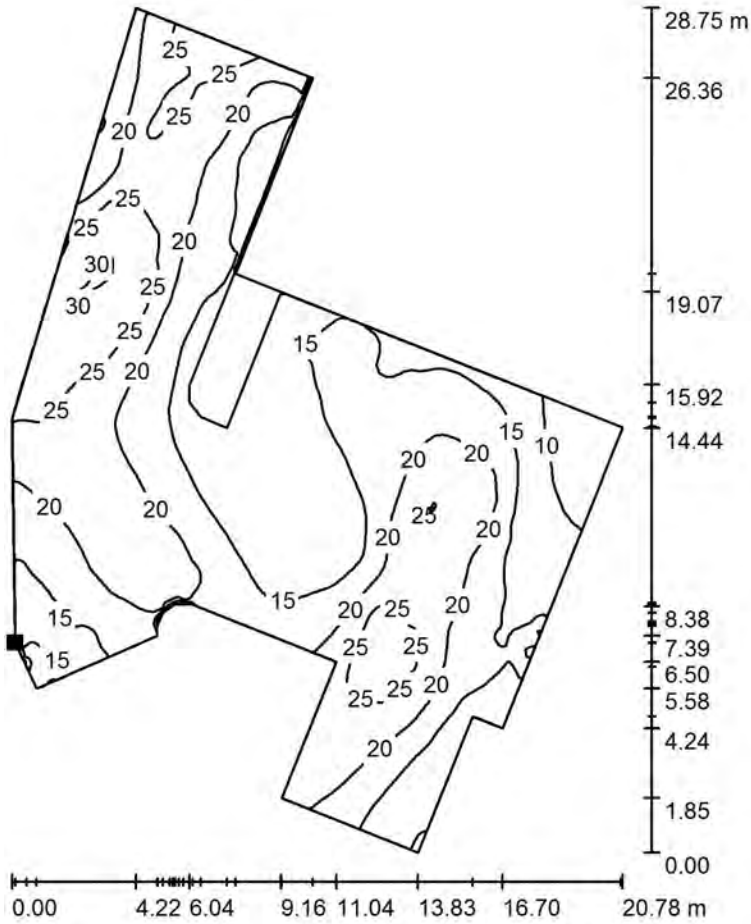
Grid: 128 x 128 Points

E_{av} [lx]	E_{min} [lx]	E_{max} [lx]	u_0	E_{min} / E_{max}
28	11	56	0.383	0.189

Walmsley Associates
60 Park Road, Chorley PR7 1QU

Operator Chris Lloyd-Morley
Telephone 01257 232232
Fax
e-Mail chrism@walmsleyassociates.co.uk

Site External Lighting with Foliage / Small West Car Park & Circulation area / Isolines (E, Perpendicular)



Values in Lux, Scale 1 : 250

Position of surface in external scene:
Marked point:
(108.387 m, 215.121 m, 0.100 m)



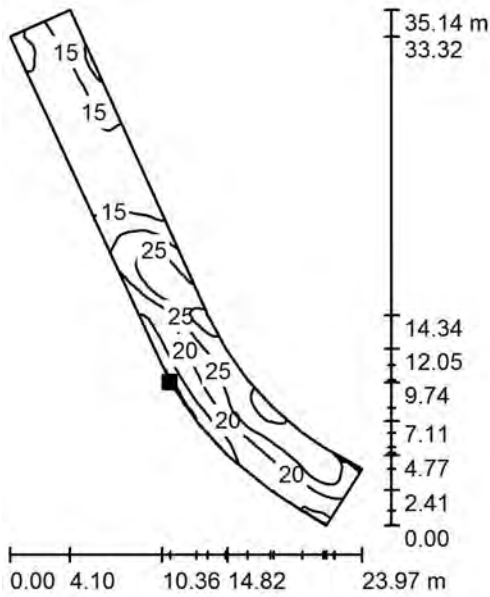
Grid: 128 x 128 Points

E_{av} [lx]	E_{min} [lx]	E_{max} [lx]	u_0	E_{min} / E_{max}
19	5.98	31	0.323	0.195

Walmsley Associates
60 Park Road, Chorley PR7 1QU

Operator Chris Lloyd-Morley
Telephone 01257 232232
Fax
e-Mail chrism@walmsleyassociates.co.uk

Site External Lighting with Foliage / West Car Park Access Road / Isolines (E, Perpendicular)



Values in Lux, Scale 1 : 500

Position of surface in external scene:
Marked point:
(120.035 m, 189.967 m, 0.100 m)



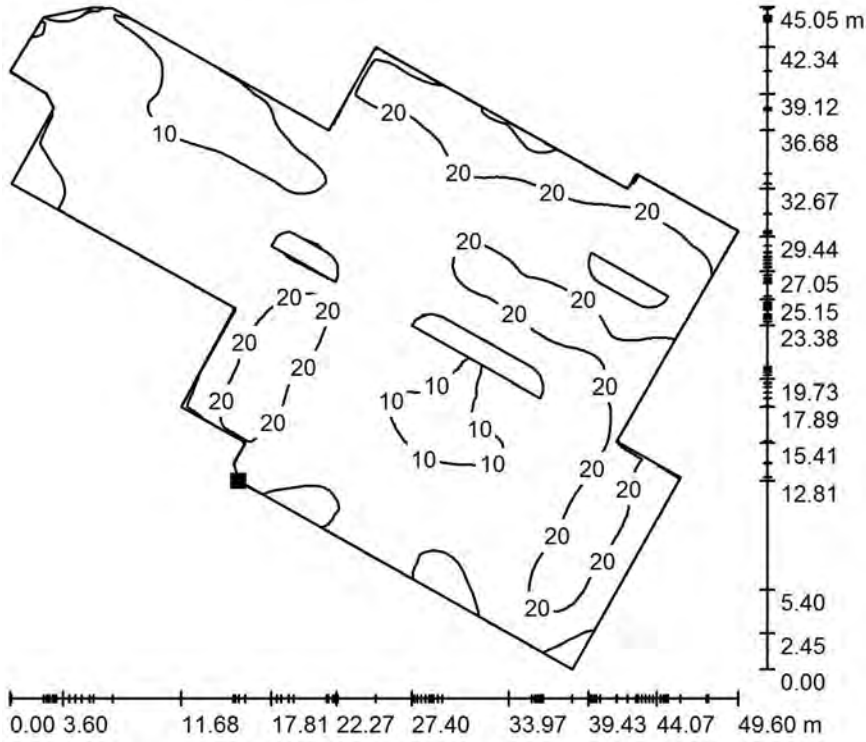
Grid: 128 x 64 Points

E_{av} [lx]	E_{min} [lx]	E_{max} [lx]	$u0$	E_{min} / E_{max}
19	9.93	33	0.524	0.305

Walmsley Associates
60 Park Road, Chorley PR7 1QU

Operator Chris Lloyd-Morley
Telephone 01257 232232
Fax
e-Mail chrislm@walmsleyassociates.co.uk

Site External Lighting with Foliage / South & Accessible Car Park / Isolines (E, Perpendicular)



Values in Lux, Scale 1 : 500

Position of surface in external scene:
Marked point:
(146.391 m, 152.496 m, 0.100 m)



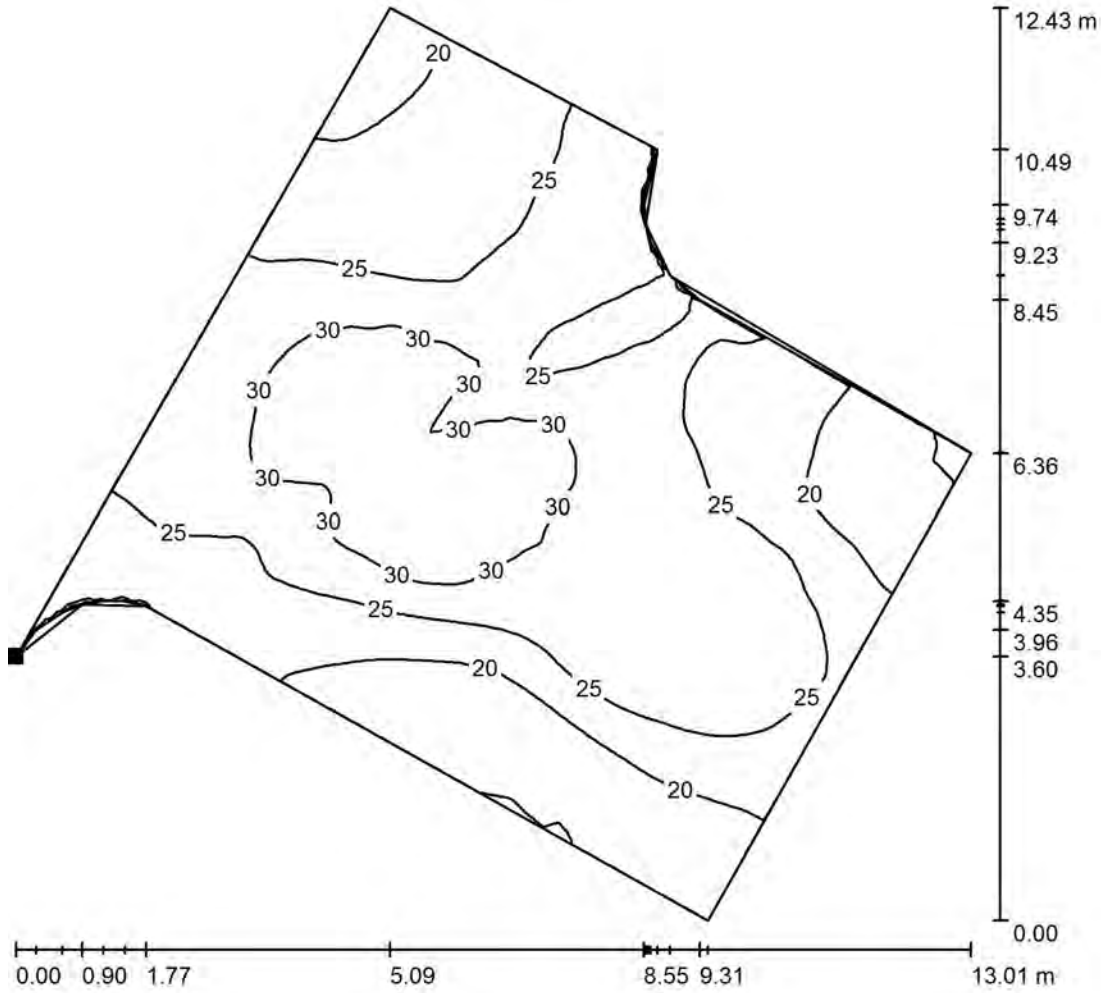
Grid: 128 x 128 Points

E_{av} [lx]	E_{min} [lx]	E_{max} [lx]	$u0$	E_{min} / E_{max}
16	3.15	29	0.203	0.109

Walmsley Associates
60 Park Road, Chorley PR7 1QU

Operator Chris Lloyd-Morley
Telephone 01257 232232
Fax
e-Mail chrism@walmsleyassociates.co.uk

Site External Lighting with Foliage / Main Entrance Road / Isolines (E, Perpendicular)



Values in Lux, Scale 1 : 100

Position of surface in external scene:
Marked point:
(172.137 m, 155.206 m, 0.100 m)



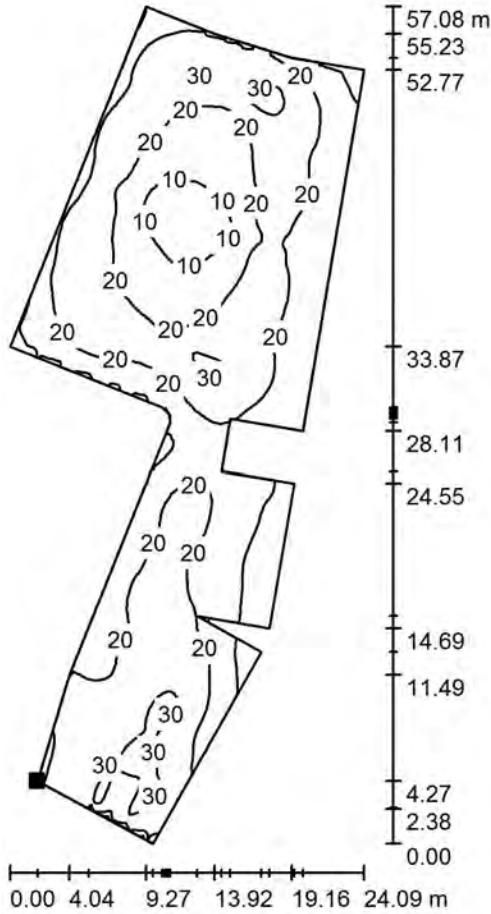
Grid: 128 x 128 Points

E_{av} [lx]	E_{min} [lx]	E_{max} [lx]	u0	E_{min} / E_{max}
25	15	34	0.589	0.431

Walmsley Associates
60 Park Road, Chorley PR7 1QU

Operator Chris Lloyd-Morley
Telephone 01257 232232
Fax
e-Mail chrism@walmsleyassociates.co.uk

Site External Lighting with Foliage / East Car Park / Isolines (E, Perpendicular)



Values in Lux, Scale 1 : 500

Position of surface in external scene:
Marked point:
(177.379 m, 163.917 m, 0.100 m)



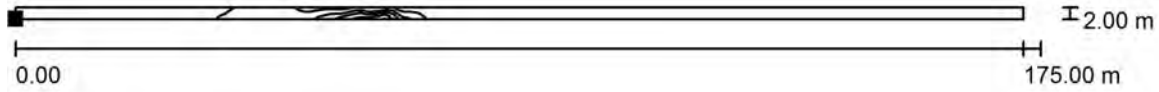
Grid: 128 x 128 Points

E_{av} [lx]	E_{min} [lx]	E_{max} [lx]	$u0$	E_{min} / E_{max}
19	4.75	34	0.244	0.142

Walmsley Associates
60 Park Road, Chorley PR7 1QU

Operator Chris Lloyd-Morley
Telephone 01257 232232
Fax
e-Mail chrism@walmsleyassociates.co.uk

Site External Lighting with Foliage / Manor Road Vertical Plane / Isolines (E, Perpendicular)



Values in Lux, Scale 1 : 1252

Position of surface in external scene:
Marked point:
(59.302 m, 297.426 m, 0.000 m)



Grid: 128 x 4 Points

E_{av} [lx]	E_{min} [lx]	E_{max} [lx]	u0	E_{min} / E_{max}
0.42	0.00	4.74	0.006	0.001

Walmsley Associates
60 Park Road, Chorley PR7 1QU

Operator Chris Lloyd-Morley
Telephone 01257 232232
Fax
e-Mail chrism@walmsleyassociates.co.uk

Site External Lighting with Foliage / Manor Road Vertical Plane / Table (E, Perpendicular)

Position of surface in external scene:
Marked point:
(59.302 m, 297.426 m, 0.000 m)

- Current Selection
- Further Selections



1.750	0.05	0.05	0.05	0.05	0.05	0.05	0.05	0.05	0.17	0.17
1.250	0.05	0.05	0.05	0.05	0.05	0.05	0.05	0.05	0.17	0.17
0.750	0.05	0.05	0.05	0.05	0.05	0.05	0.05	0.05	0.17	0.17
0.250	0.05	0.05	0.05	0.05	0.05	0.05	0.05	0.05	0.17	0.17
m	0.684	2.051	3.418	4.785	6.152	7.520	8.887	10.254	11.621	12.988

Attention: The coordinates refer to the image above. Values in Lux.

Grid: 128 x 4 Points

E_{av} [lx]	E_{min} [lx]	E_{max} [lx]	u0	E_{min} / E_{max}
0.42	0.00	4.74	0.006	0.001

Walmsley Associates
60 Park Road, Chorley PR7 1QU

Operator Chris Lloyd-Morley
Telephone 01257 232232
Fax
e-Mail chrism@walmsleyassociates.co.uk

Site External Lighting with Foliage / Manor Road Vertical Plane / Table (E, Perpendicular)

Position of surface in external scene:
Marked point:
(59.302 m, 297.426 m, 0.000 m)

- Current Selection
- Further Selections



1.750	0.17	0.17	0.17	0.16	0.16	0.18	0.30	0.27	0.27	0.27
1.250	0.17	0.17	0.17	0.16	0.16	0.18	0.30	0.27	0.27	0.27
0.750	0.20	0.22	0.23	0.22	0.22	0.33	0.44	0.41	0.34	0.34
0.250	0.20	0.22	0.23	0.22	0.22	0.33	0.44	0.41	0.34	0.34
m	14.355	15.723	17.090	18.457	19.824	21.191	22.559	23.926	25.293	26.660

Attention: The coordinates refer to the image above. Values in Lux.

Grid: 128 x 4 Points

E_{av} [lx]	E_{min} [lx]	E_{max} [lx]	u_0	E_{min} / E_{max}
0.42	0.00	4.74	0.006	0.001

Walmsley Associates
60 Park Road, Chorley PR7 1QU

Operator Chris Lloyd-Morley
Telephone 01257 232232
Fax
e-Mail chrislm@walmsleyassociates.co.uk

Site External Lighting with Foliage / Manor Road Vertical Plane / Table (E, Perpendicular)

Position of surface in external scene:
Marked point:
(59.302 m, 297.426 m, 0.000 m)

- Current Selection
- Further Selections



1.750	0.29	0.29	0.28	0.27	0.40	0.40	0.48	1.11	1.16	1.15
1.250	0.29	0.29	0.28	0.27	0.40	0.40	0.92	1.26	1.31	1.30
0.750	0.36	0.34	0.33	0.31	0.40	0.57	1.35	1.38	1.42	1.40
0.250	0.36	0.34	0.33	0.31	0.40	1.22	1.45	1.45	1.48	1.47
m	28.027	29.395	30.762	32.129	33.496	34.863	36.230	37.598	38.965	40.332

Attention: The coordinates refer to the image above. Values in Lux.

Grid: 128 x 4 Points

E_{av} [lx]	E_{min} [lx]	E_{max} [lx]	u_0	E_{min} / E_{max}
0.42	0.00	4.74	0.006	0.001

Walmsley Associates
60 Park Road, Chorley PR7 1QU

Operator Chris Lloyd-Morley
Telephone 01257 232232
Fax
e-Mail chrislm@walmsleyassociates.co.uk

Site External Lighting with Foliage / Manor Road Vertical Plane / Table (E, Perpendicular)

Position of surface in external scene:
Marked point:
(59.302 m, 297.426 m, 0.000 m)

- Current Selection
- Further Selections



1.750	1.13	1.10	1.16	1.20	1.11	1.02	0.60	0.51	0.98	0.59
1.250	1.27	1.23	1.33	1.36	1.26	1.02	0.60	0.82	1.47	1.46
0.750	1.37	1.37	1.59	1.61	1.65	1.72	1.45	1.66	1.83	2.38
0.250	1.47	1.46	1.59	1.61	1.65	1.72	1.55	1.78	2.03	2.66
m	41.699	43.066	44.434	45.801	47.168	48.535	49.902	51.270	52.637	54.004

Attention: The coordinates refer to the image above. Values in Lux.

Grid: 128 x 4 Points

E_{av} [lx]	E_{min} [lx]	E_{max} [lx]	u_0	E_{min} / E_{max}
0.42	0.00	4.74	0.006	0.001

Walmsley Associates
60 Park Road, Chorley PR7 1QU

Operator Chris Lloyd-Morley
Telephone 01257 232232
Fax
e-Mail chrism@walmsleyassociates.co.uk

Site External Lighting with Foliage / Manor Road Vertical Plane / Table (E, Perpendicular)

Position of surface in external scene:
Marked point:
(59.302 m, 297.426 m, 0.000 m)

- Current Selection
- Further Selections



1.750	0.81	0.79	0.87	1.38	0.95	0.76	0.95	1.43	0.43	0.40
1.250	1.13	1.35	2.37	3.17	1.80	1.70	3.24	3.35	0.66	0.82
0.750	2.47	3.07	3.38	3.84	3.55	4.45	4.31	4.16	1.30	1.83
0.250	2.80	3.61	3.72	4.16	3.82	<u>4.74</u>	4.68	4.69	1.43	2.22
m	55.371	56.738	58.105	59.473	60.840	62.207	63.574	64.941	66.309	67.676

Attention: The coordinates refer to the image above. Values in Lux.

Grid: 128 x 4 Points

E_{av} [lx]	E_{min} [lx]	E_{max} [lx]	$u0$	E_{min} / E_{max}
0.42	0.00	4.74	0.006	0.001

Walmsley Associates
60 Park Road, Chorley PR7 1QU

Operator Chris Lloyd-Morley
Telephone 01257 232232
Fax
e-Mail chrislm@walmsleyassociates.co.uk

Site External Lighting with Foliage / Manor Road Vertical Plane / Table (E, Perpendicular)

Position of surface in external scene:
Marked point:
(59.302 m, 297.426 m, 0.000 m)

- Current Selection
- Further Selections



1.750	0.48	0.48	0.36	0.30	0.32	0.32	0.06	0.04	0.04	0.04
1.250	0.97	0.71	0.36	0.30	0.32	0.32	0.06	0.04	0.04	0.04
0.750	1.43	1.04	0.41	0.44	0.43	0.39	0.10	0.05	0.04	0.04
0.250	1.79	1.26	0.44	0.51	0.43	0.39	0.10	0.05	0.04	0.04
m	69.043	70.410	71.777	73.145	74.512	75.879	77.246	78.613	79.980	81.348

Attention: The coordinates refer to the image above. Values in Lux.

Grid: 128 x 4 Points

E_{av} [lx]	E_{min} [lx]	E_{max} [lx]	u_0	E_{min} / E_{max}
0.42	0.00	4.74	0.006	0.001

Walmsley Associates
60 Park Road, Chorley PR7 1QU

Operator Chris Lloyd-Morley
Telephone 01257 232232
Fax
e-Mail chrism@walmsleyassociates.co.uk

Site External Lighting with Foliage / Manor Road Vertical Plane / Table (E, Perpendicular)

Position of surface in external scene:
Marked point:
(59.302 m, 297.426 m, 0.000 m)

- Current Selection
- Further Selections



1.750	0.04	0.04	0.04	0.04	0.01	0.01	0.01	0.01	0.01	0.01
1.250	0.04	0.04	0.04	0.04	0.01	0.01	0.01	0.01	0.01	0.01
0.750	0.04	0.04	0.04	0.04	0.01	0.01	0.01	0.01	0.01	0.01
0.250	0.04	0.04	0.04	0.04	0.01	0.01	0.01	0.01	0.01	0.01
m	82.715	84.082	85.449	86.816	88.184	89.551	90.918	92.285	93.652	95.020

Attention: The coordinates refer to the image above. Values in Lux.

Grid: 128 x 4 Points

E_{av} [lx]	E_{min} [lx]	E_{max} [lx]	u_0	E_{min} / E_{max}
0.42	0.00	4.74	0.006	0.001

Walmsley Associates
60 Park Road, Chorley PR7 1QU

Operator Chris Lloyd-Morley
Telephone 01257 232232
Fax
e-Mail chrislm@walmsleyassociates.co.uk

Site External Lighting with Foliage / Manor Road Vertical Plane / Table (E, Perpendicular)

Position of surface in external scene:
Marked point:
(59.302 m, 297.426 m, 0.000 m)

- Current Selection
- Further Selections



1.750	0.01	0.01	<u>0.00</u>	<u>0.00</u>	<u>0.00</u>	<u>0.00</u>	<u>0.00</u>	<u>0.00</u>	<u>0.00</u>	<u>0.00</u>
1.250	0.01	0.01	<u>0.00</u>	<u>0.00</u>	<u>0.00</u>	<u>0.00</u>	<u>0.00</u>	<u>0.00</u>	<u>0.00</u>	<u>0.00</u>
0.750	0.01	0.01	<u>0.00</u>	<u>0.00</u>	<u>0.00</u>	<u>0.00</u>	<u>0.00</u>	<u>0.00</u>	<u>0.00</u>	<u>0.00</u>
0.250	0.01	0.01	<u>0.00</u>	<u>0.00</u>	<u>0.00</u>	<u>0.00</u>	<u>0.00</u>	<u>0.00</u>	<u>0.00</u>	<u>0.00</u>
m	96.387	97.754	99.121	100.488	101.855	103.223	104.590	105.957	107.324	108.691

Attention: The coordinates refer to the image above. Values in Lux.

Grid: 128 x 4 Points

E_{av} [lx]	E_{min} [lx]	E_{max} [lx]	u_0	E_{min} / E_{max}
0.42	0.00	4.74	0.006	0.001

Walmsley Associates
60 Park Road, Chorley PR7 1QU

Operator Chris Lloyd-Morley
Telephone 01257 232232
Fax
e-Mail chrislm@walmsleyassociates.co.uk

Site External Lighting with Foliage / Manor Road Vertical Plane / Table (E, Perpendicular)

Position of surface in external scene:
Marked point:
(59.302 m, 297.426 m, 0.000 m)

- Current Selection
- Further Selections



1.750	<u>0.00</u>	<u>0.00</u>	<u>0.00</u>	<u>0.00</u>	<u>0.00</u>	<u>0.00</u>	<u>0.00</u>	<u>0.00</u>	<u>0.00</u>	<u>0.00</u>	<u>0.00</u>
1.250	<u>0.00</u>	<u>0.00</u>	<u>0.00</u>	<u>0.00</u>	<u>0.00</u>	<u>0.00</u>	<u>0.00</u>	<u>0.00</u>	<u>0.00</u>	<u>0.00</u>	<u>0.00</u>
0.750	<u>0.00</u>	<u>0.00</u>	<u>0.00</u>	<u>0.00</u>	<u>0.00</u>	<u>0.00</u>	<u>0.00</u>	<u>0.00</u>	<u>0.00</u>	<u>0.00</u>	<u>0.00</u>
0.250	<u>0.00</u>	<u>0.00</u>	<u>0.00</u>	<u>0.00</u>	<u>0.00</u>	<u>0.00</u>	<u>0.00</u>	<u>0.00</u>	<u>0.00</u>	<u>0.00</u>	<u>0.00</u>
m	110.059	111.426	112.793	114.160	115.527	116.895	118.262	119.629	120.996	122.363	

Attention: The coordinates refer to the image above. Values in Lux.

Grid: 128 x 4 Points

E_{av} [lx]	E_{min} [lx]	E_{max} [lx]	u0	E_{min} / E_{max}
0.42	0.00	4.74	0.006	0.001

Walmsley Associates
60 Park Road, Chorley PR7 1QU

Operator Chris Lloyd-Morley
Telephone 01257 232232
Fax
e-Mail chrislm@walmsleyassociates.co.uk

Site External Lighting with Foliage / Manor Road Vertical Plane / Table (E, Perpendicular)

Position of surface in external scene:
Marked point:
(59.302 m, 297.426 m, 0.000 m)

- Current Selection
- Further Selections



1.750	<u>0.00</u>	<u>0.00</u>	<u>0.00</u>	<u>0.00</u>	<u>0.00</u>	<u>0.00</u>	<u>0.00</u>	<u>0.00</u>	<u>0.00</u>	<u>0.00</u>	<u>0.00</u>
1.250	<u>0.00</u>	<u>0.00</u>	<u>0.00</u>	<u>0.00</u>	<u>0.00</u>	<u>0.00</u>	<u>0.00</u>	<u>0.00</u>	<u>0.00</u>	<u>0.00</u>	<u>0.00</u>
0.750	<u>0.00</u>	<u>0.00</u>	<u>0.00</u>	<u>0.00</u>	<u>0.00</u>	<u>0.00</u>	<u>0.00</u>	<u>0.00</u>	<u>0.00</u>	<u>0.00</u>	<u>0.00</u>
0.250	<u>0.00</u>	<u>0.00</u>	<u>0.00</u>	<u>0.00</u>	<u>0.00</u>	<u>0.00</u>	<u>0.00</u>	<u>0.00</u>	<u>0.00</u>	<u>0.00</u>	<u>0.00</u>
m	123.730	125.098	126.465	127.832	129.199	130.566	131.934	133.301	134.668	136.035	

Attention: The coordinates refer to the image above. Values in Lux.

Grid: 128 x 4 Points

E_{av} [lx]	E_{min} [lx]	E_{max} [lx]	$u0$	E_{min} / E_{max}
0.42	0.00	4.74	0.006	0.001

Walmsley Associates
60 Park Road, Chorley PR7 1QU

Operator Chris Lloyd-Morley
Telephone 01257 232232
Fax
e-Mail chrislm@walmsleyassociates.co.uk

Site External Lighting with Foliage / Manor Road Vertical Plane / Table (E, Perpendicular)

Position of surface in external scene:
Marked point:
(59.302 m, 297.426 m, 0.000 m)

- Current Selection
- Further Selections



1.750	<u>0.00</u>	<u>0.00</u>	<u>0.00</u>	<u>0.00</u>	<u>0.00</u>	<u>0.00</u>	<u>0.00</u>	<u>0.00</u>	<u>0.00</u>	<u>0.00</u>
1.250	<u>0.00</u>	<u>0.00</u>	<u>0.00</u>	<u>0.00</u>	<u>0.00</u>	<u>0.00</u>	<u>0.00</u>	<u>0.00</u>	<u>0.00</u>	<u>0.00</u>
0.750	<u>0.00</u>	<u>0.00</u>	<u>0.00</u>	<u>0.00</u>	<u>0.00</u>	<u>0.00</u>	<u>0.00</u>	<u>0.00</u>	<u>0.00</u>	<u>0.00</u>
0.250	<u>0.00</u>	<u>0.00</u>	<u>0.00</u>	<u>0.00</u>	<u>0.00</u>	<u>0.00</u>	<u>0.00</u>	<u>0.00</u>	<u>0.00</u>	<u>0.00</u>
m	137.402	138.770	140.137	141.504	142.871	144.238	145.605	146.973	148.340	149.707

Attention: The coordinates refer to the image above. Values in Lux.

Grid: 128 x 4 Points

E_{av} [lx]	E_{min} [lx]	E_{max} [lx]	$u0$	E_{min} / E_{max}
0.42	0.00	4.74	0.006	0.001

Walmsley Associates
60 Park Road, Chorley PR7 1QU

Operator Chris Lloyd-Morley
Telephone 01257 232232
Fax
e-Mail chrislm@walmsleyassociates.co.uk

Site External Lighting with Foliage / Manor Road Vertical Plane / Table (E, Perpendicular)

Position of surface in external scene:
Marked point:
(59.302 m, 297.426 m, 0.000 m)

- Current Selection
- Further Selections



1.750	<u>0.00</u>	<u>0.00</u>	0.05	0.05	0.06	0.06	0.06	0.06	0.06	0.06	0.06
1.250	<u>0.00</u>	<u>0.00</u>	0.05	0.05	0.06	0.06	0.06	0.06	0.06	0.06	0.06
0.750	<u>0.00</u>	<u>0.00</u>	0.05	0.05	0.06	0.06	0.06	0.06	0.06	0.06	0.06
0.250	<u>0.00</u>	<u>0.00</u>	0.05	0.05	0.06	0.06	0.06	0.06	0.06	0.06	0.06
m	151.074	152.441	153.809	155.176	156.543	157.910	159.277	160.645	162.012	163.379	

Attention: The coordinates refer to the image above. Values in Lux.

Grid: 128 x 4 Points

E_{av} [lx]	E_{min} [lx]	E_{max} [lx]	u0	E_{min} / E_{max}
0.42	0.00	4.74	0.006	0.001

Walmsley Associates
60 Park Road, Chorley PR7 1QU

Operator Chris Lloyd-Morley
Telephone 01257 232232
Fax
e-Mail chrism@walmsleyassociates.co.uk

Site External Lighting with Foliage / Manor Road Vertical Plane / Table (E, Perpendicular)

Position of surface in external scene:
Marked point:
(59.302 m, 297.426 m, 0.000 m)

- Current Selection
- Further Selections



1.750	0.09	0.09	0.09	0.09	0.09	0.09	0.09	0.08	0.08
1.250	0.09	0.09	0.09	0.09	0.09	0.09	0.09	0.08	0.08
0.750	0.09	0.09	0.09	0.09	0.09	0.09	0.09	0.08	0.08
0.250	0.09	0.09	0.09	0.09	0.09	0.09	0.09	0.08	0.08
m	164.746	166.113	167.480	168.848	170.215	171.582	172.949	174.316	

Attention: The coordinates refer to the image above. Values in Lux.

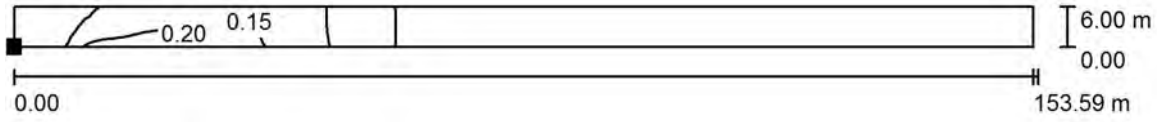
Grid: 128 x 4 Points

E_{av} [lx]	E_{min} [lx]	E_{max} [lx]	u0	E_{min} / E_{max}
0.42	0.00	4.74	0.006	0.001

Walmsley Associates
 60 Park Road, Chorley PR7 1QU

Operator Chris Lloyd-Morley
 Telephone 01257 232232
 Fax
 e-Mail chrism@walmsleyassociates.co.uk

Site External Lighting with Foliage / Manor Road Vertical Plane at houses / Isolines (E, Perpendicular)



Values in Lux, Scale 1 : 1099

Position of surface in external scene:
 Marked point:
 (84.272 m, 301.723 m, 0.000 m)



Grid: 128 x 4 Points

E_{av} [lx]	E_{min} [lx]	E_{max} [lx]	u0	E_{min} / E_{max}
0.06	0.00	0.25	0.038	0.009

Walmsley Associates
60 Park Road, Chorley PR7 1QU

Operator Chris Lloyd-Morley
Telephone 01257 232232
Fax
e-Mail chrislm@walmsleyassociates.co.uk

Site External Lighting with Foliage / Manor Road Vertical Plane at houses / Table (E, Perpendicular)



5.250	0.12	0.12	0.12	0.12	0.12	0.12	0.12	0.12	0.12	0.15	0.15
3.750	0.12	0.12	0.12	0.12	0.12	0.12	0.12	0.12	0.12	0.15	0.15
2.250	0.13	0.13	0.13	0.13	0.13	0.13	0.13	0.13	0.13	0.17	0.17
0.750	0.13	0.13	0.13	0.13	0.13	0.13	0.15	0.15	0.15	0.21	0.21
m	0.600	1.800	3.000	4.200	5.400	6.600	7.800	9.000	10.199	11.399	

Attention: The coordinates refer to the image above. Values in Lux.

Grid: 128 x 4 Points

E_{av} [lx]	E_{min} [lx]	E_{max} [lx]	$u0$	E_{min} / E_{max}
0.06	0.00	0.25	0.038	0.009

Walmsley Associates
60 Park Road, Chorley PR7 1QU

Operator Chris Lloyd-Morley
Telephone 01257 232232
Fax
e-Mail chrislm@walmsleyassociates.co.uk

Site External Lighting with Foliage / Manor Road Vertical Plane at houses / Table (E, Perpendicular)



5.250	0.15	0.15	0.15	0.15	0.15	0.15	0.17	0.17	0.17	0.17
3.750	0.15	0.15	0.15	0.15	0.15	0.15	0.17	0.17	0.17	0.17
2.250	0.17	0.17	0.18	0.18	0.19	0.19	0.21	0.21	0.21	0.21
0.750	0.22	0.22	0.22	0.22	0.23	0.23	0.24	0.24	<u>0.25</u>	<u>0.25</u>
m	12.599	13.799	14.999	16.199	17.399	18.599	19.799	20.999	22.199	23.399

Attention: The coordinates refer to the image above. Values in Lux.

Grid: 128 x 4 Points

E_{av} [lx]	E_{min} [lx]	E_{max} [lx]	u_0	E_{min} / E_{max}
0.06	0.00	0.25	0.038	0.009

Walmsley Associates
60 Park Road, Chorley PR7 1QU

Operator Chris Lloyd-Morley
Telephone 01257 232232
Fax
e-Mail chrislm@walmsleyassociates.co.uk

Site External Lighting with Foliage / Manor Road Vertical Plane at houses / Table (E, Perpendicular)



5.250	0.17	0.17	0.17	0.17	0.15	0.15	0.15	0.15	0.15	0.15
3.750	0.17	0.17	0.17	0.17	0.15	0.15	0.15	0.15	0.15	0.15
2.250	0.20	0.20	0.18	0.18	0.16	0.16	0.16	0.16	0.15	0.15
0.750	0.24	0.24	0.19	0.19	0.16	0.16	0.16	0.16	0.18	0.18
m	24.599	25.799	26.999	28.198	29.398	30.598	31.798	32.998	34.198	35.398

Attention: The coordinates refer to the image above. Values in Lux.

Grid: 128 x 4 Points

E_{av} [lx]	E_{min} [lx]	E_{max} [lx]	u_0	E_{min} / E_{max}
0.06	0.00	0.25	0.038	0.009

Walmsley Associates
60 Park Road, Chorley PR7 1QU

Operator Chris Lloyd-Morley
Telephone 01257 232232
Fax
e-Mail chrislm@walmsleyassociates.co.uk

Site External Lighting with Foliage / Manor Road Vertical Plane at houses / Table (E, Perpendicular)



5.250	0.15	0.15	0.11	0.11	0.11	0.11	0.11	0.11	0.11	0.11
3.750	0.15	0.15	0.11	0.11	0.11	0.11	0.11	0.11	0.11	0.11
2.250	0.15	0.15	0.11	0.11	0.11	0.11	0.11	0.11	0.11	0.11
0.750	0.16	0.16	0.11	0.11	0.12	0.12	0.12	0.12	0.11	0.11
m	36.598	37.798	38.998	40.198	41.398	42.598	43.798	44.998	46.198	47.397

Attention: The coordinates refer to the image above. Values in Lux.

Grid: 128 x 4 Points

E_{av} [lx]	E_{min} [lx]	E_{max} [lx]	$u0$	E_{min} / E_{max}
0.06	0.00	0.25	0.038	0.009

Walmsley Associates
60 Park Road, Chorley PR7 1QU

Operator Chris Lloyd-Morley
Telephone 01257 232232
Fax
e-Mail chrislm@walmsleyassociates.co.uk

Site External Lighting with Foliage / Manor Road Vertical Plane at houses / Table (E, Perpendicular)



5.250	0.07	0.07	0.07	0.07	0.07	0.07	0.07	0.07	0.07	0.03	0.03
3.750	0.07	0.07	0.07	0.07	0.07	0.07	0.07	0.07	0.07	0.03	0.03
2.250	0.07	0.07	0.07	0.07	0.07	0.07	0.07	0.07	0.07	0.03	0.03
0.750	0.07	0.07	0.07	0.07	0.07	0.07	0.07	0.07	0.07	0.03	0.03
m	48.597	49.797	50.997	52.197	53.397	54.597	55.797	56.997	58.197	59.397	

Attention: The coordinates refer to the image above. Values in Lux.

Grid: 128 x 4 Points

E_{av} [lx]	E_{min} [lx]	E_{max} [lx]	u_0	E_{min} / E_{max}
0.06	0.00	0.25	0.038	0.009

Walmsley Associates
60 Park Road, Chorley PR7 1QU

Operator Chris Lloyd-Morley
Telephone 01257 232232
Fax
e-Mail chrism@walmsleyassociates.co.uk

Site External Lighting with Foliage / Manor Road Vertical Plane at houses / Table (E, Perpendicular)



5.250	0.03	0.03	0.03	0.03	0.03	0.03	0.03	0.01	0.01	0.01	0.01
3.750	0.03	0.03	0.03	0.03	0.03	0.03	0.03	0.01	0.01	0.01	0.01
2.250	0.03	0.03	0.03	0.03	0.03	0.03	0.03	0.01	0.01	0.01	0.01
0.750	0.03	0.03	0.03	0.03	0.03	0.03	0.03	0.01	0.01	0.01	0.01
m	60.597	61.797	62.997	64.197	65.396	66.596	67.796	68.996	70.196	71.396	

Attention: The coordinates refer to the image above. Values in Lux.

Grid: 128 x 4 Points

E_{av} [lx]	E_{min} [lx]	E_{max} [lx]	$u0$	E_{min} / E_{max}
0.06	0.00	0.25	0.038	0.009

Walmsley Associates
60 Park Road, Chorley PR7 1QU

Operator Chris Lloyd-Morley
Telephone 01257 232232
Fax
e-Mail chrislm@walmsleyassociates.co.uk

Site External Lighting with Foliage / Manor Road Vertical Plane at houses / Table (E, Perpendicular)



5.250	0.01	0.01	0.01	0.01	0.01	0.01	0.01	0.01	0.01	0.01
3.750	0.01	0.01	0.01	0.01	0.01	0.01	0.01	0.01	0.01	0.01
2.250	0.01	0.01	0.01	0.01	0.01	0.01	0.01	0.01	0.01	0.01
0.750	0.01	0.01	0.01	0.01	0.01	0.01	0.01	0.01	0.01	0.01
m	72.596	73.796	74.996	76.196	77.396	78.596	79.796	80.996	82.196	83.396

Attention: The coordinates refer to the image above. Values in Lux.

Grid: 128 x 4 Points

E_{av} [lx]	E_{min} [lx]	E_{max} [lx]	$u0$	E_{min} / E_{max}
0.06	0.00	0.25	0.038	0.009

Walmsley Associates
60 Park Road, Chorley PR7 1QU

Operator Chris Lloyd-Morley
Telephone 01257 232232
Fax
e-Mail chrislm@walmsleyassociates.co.uk

Site External Lighting with Foliage / Manor Road Vertical Plane at houses / Table (E, Perpendicular)

Position of surface in external scene:
Marked point:
(84.272 m, 301.723 m, 0.000 m)

- Current Selection
- Further Selections



5.250	0.01	0.01	<u>0.00</u>	<u>0.00</u>	<u>0.00</u>	<u>0.00</u>	<u>0.00</u>	<u>0.00</u>	<u>0.00</u>	<u>0.00</u>
3.750	0.01	0.01	<u>0.00</u>	<u>0.00</u>	<u>0.00</u>	<u>0.00</u>	<u>0.00</u>	<u>0.00</u>	<u>0.00</u>	<u>0.00</u>
2.250	0.01	0.01	<u>0.00</u>	<u>0.00</u>	<u>0.00</u>	<u>0.00</u>	<u>0.00</u>	<u>0.00</u>	<u>0.00</u>	<u>0.00</u>
0.750	0.01	0.01	<u>0.00</u>	<u>0.00</u>	<u>0.00</u>	<u>0.00</u>	<u>0.00</u>	<u>0.00</u>	<u>0.00</u>	<u>0.00</u>
m	84.595	85.795	86.995	88.195	89.395	90.595	91.795	92.995	94.195	95.395

Attention: The coordinates refer to the image above. Values in Lux.

Grid: 128 x 4 Points

E_{av} [lx]	E_{min} [lx]	E_{max} [lx]	u_0	E_{min} / E_{max}
0.06	0.00	0.25	0.038	0.009

Walmsley Associates
60 Park Road, Chorley PR7 1QU

Operator Chris Lloyd-Morley
Telephone 01257 232232
Fax
e-Mail chrislm@walmsleyassociates.co.uk

Site External Lighting with Foliage / Manor Road Vertical Plane at houses / Table (E, Perpendicular)



5.250	<u>0.00</u>	<u>0.00</u>	<u>0.00</u>	<u>0.00</u>	<u>0.00</u>	<u>0.00</u>	<u>0.00</u>	<u>0.00</u>	<u>0.00</u>	<u>0.00</u>
3.750	<u>0.00</u>	<u>0.00</u>	<u>0.00</u>	<u>0.00</u>	<u>0.00</u>	<u>0.00</u>	<u>0.00</u>	<u>0.00</u>	<u>0.00</u>	<u>0.00</u>
2.250	<u>0.00</u>	<u>0.00</u>	<u>0.00</u>	<u>0.00</u>	<u>0.00</u>	<u>0.00</u>	<u>0.00</u>	<u>0.00</u>	<u>0.00</u>	<u>0.00</u>
0.750	<u>0.00</u>	<u>0.00</u>	<u>0.00</u>	<u>0.00</u>	<u>0.00</u>	<u>0.00</u>	<u>0.00</u>	<u>0.00</u>	<u>0.00</u>	<u>0.00</u>
m	96.595	97.795	98.995	100.195	101.395	102.594	103.794	104.994	106.194	107.394

Attention: The coordinates refer to the image above. Values in Lux.

Grid: 128 x 4 Points

E_{av} [lx]	E_{min} [lx]	E_{max} [lx]	u_0	E_{min} / E_{max}
0.06	0.00	0.25	0.038	0.009

Walmsley Associates
60 Park Road, Chorley PR7 1QU

Operator Chris Lloyd-Morley
Telephone 01257 232232
Fax
e-Mail chrislm@walmsleyassociates.co.uk

Site External Lighting with Foliage / Manor Road Vertical Plane at houses / Table (E, Perpendicular)



5.250	<u>0.00</u>	<u>0.00</u>	<u>0.00</u>	<u>0.00</u>	<u>0.00</u>	<u>0.00</u>	<u>0.00</u>	<u>0.00</u>	<u>0.00</u>	<u>0.00</u>
3.750	<u>0.00</u>	<u>0.00</u>	<u>0.00</u>	<u>0.00</u>	<u>0.00</u>	<u>0.00</u>	<u>0.00</u>	<u>0.00</u>	<u>0.00</u>	<u>0.00</u>
2.250	<u>0.00</u>	<u>0.00</u>	<u>0.00</u>	<u>0.00</u>	<u>0.00</u>	<u>0.00</u>	<u>0.00</u>	<u>0.00</u>	<u>0.00</u>	<u>0.00</u>
0.750	<u>0.00</u>	<u>0.00</u>	<u>0.00</u>	<u>0.00</u>	<u>0.00</u>	<u>0.00</u>	<u>0.00</u>	<u>0.00</u>	<u>0.00</u>	<u>0.00</u>
m	108.594	109.794	110.994	112.194	113.394	114.594	115.794	116.994	118.194	119.394

Attention: The coordinates refer to the image above. Values in Lux.

Grid: 128 x 4 Points

E_{av} [lx]	E_{min} [lx]	E_{max} [lx]	u_0	E_{min} / E_{max}
0.06	0.00	0.25	0.038	0.009

Walmsley Associates
60 Park Road, Chorley PR7 1QU

Operator Chris Lloyd-Morley
Telephone 01257 232232
Fax
e-Mail chrislm@walmsleyassociates.co.uk

Site External Lighting with Foliage / Manor Road Vertical Plane at houses / Table (E, Perpendicular)



5.250	<u>0.00</u>	<u>0.00</u>	<u>0.00</u>	<u>0.00</u>	0.01	0.01	0.01	0.01	0.01	0.01
3.750	<u>0.00</u>	<u>0.00</u>	<u>0.00</u>	<u>0.00</u>	0.01	0.01	0.01	0.01	0.01	0.01
2.250	<u>0.00</u>	<u>0.00</u>	<u>0.00</u>	<u>0.00</u>	0.01	0.01	0.01	0.01	0.01	0.01
0.750	<u>0.00</u>	<u>0.00</u>	<u>0.00</u>	<u>0.00</u>	0.01	0.01	0.01	0.01	0.01	0.01
m	120.594	121.793	122.993	124.193	125.393	126.593	127.793	128.993	130.193	131.393

Attention: The coordinates refer to the image above. Values in Lux.

Grid: 128 x 4 Points

E_{av} [lx]	E_{min} [lx]	E_{max} [lx]	u_0	E_{min} / E_{max}
0.06	0.00	0.25	0.038	0.009

Walmsley Associates
60 Park Road, Chorley PR7 1QU

Operator Chris Lloyd-Morley
Telephone 01257 232232
Fax
e-Mail chrislm@walmsleyassociates.co.uk

Site External Lighting with Foliage / Manor Road Vertical Plane at houses / Table (E, Perpendicular)



5.250	0.01	0.01	0.01	0.01	0.01	0.01	0.01	0.01	0.01	0.01	0.01
3.750	0.01	0.01	0.01	0.01	0.01	0.01	0.01	0.01	0.01	0.01	0.01
2.250	0.01	0.01	0.02	0.02	0.02	0.02	0.01	0.01	0.01	0.01	0.01
0.750	0.01	0.01	0.02	0.02	0.02	0.02	0.01	0.01	0.01	0.01	0.01
m	132.593	133.793	134.993	136.193	137.393	138.593	139.792	140.992	142.192	143.392	

Attention: The coordinates refer to the image above. Values in Lux.

Grid: 128 x 4 Points

E_{av} [lx]	E_{min} [lx]	E_{max} [lx]	$u0$	E_{min} / E_{max}
0.06	0.00	0.25	0.038	0.009

Walmsley Associates
60 Park Road, Chorley PR7 1QU

Operator Chris Lloyd-Morley
Telephone 01257 232232
Fax
e-Mail chrislm@walmsleyassociates.co.uk

Site External Lighting with Foliage / Manor Road Vertical Plane at houses / Table (E, Perpendicular)



5.250	0.03	0.03	0.03	0.03	0.03	0.03	0.03	0.03
3.750	0.03	0.03	0.03	0.03	0.03	0.03	0.03	0.03
2.250	0.03	0.03	0.03	0.03	0.03	0.03	0.03	0.03
0.750	0.03	0.03	0.03	0.03	0.03	0.03	0.03	0.03
m	144.592	145.792	146.992	148.192	149.392	150.592	151.792	152.992

Attention: The coordinates refer to the image above. Values in Lux.

Grid: 128 x 4 Points

E_{av} [lx]	E_{min} [lx]	E_{max} [lx]	$u0$	E_{min} / E_{max}
0.06	0.00	0.25	0.038	0.009