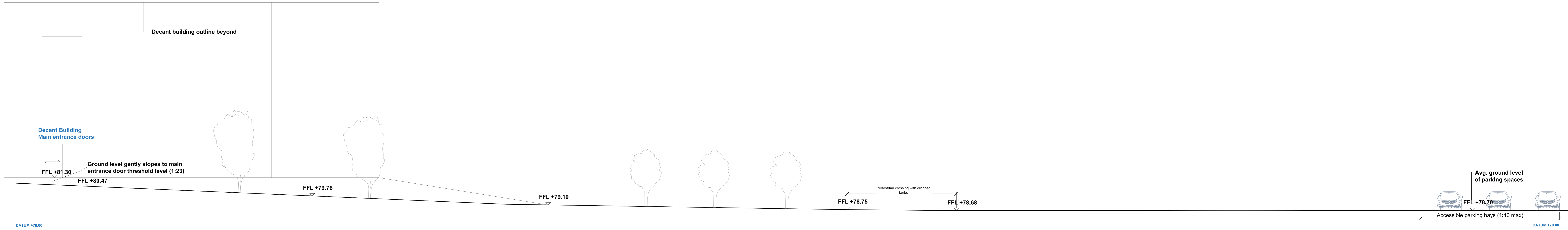


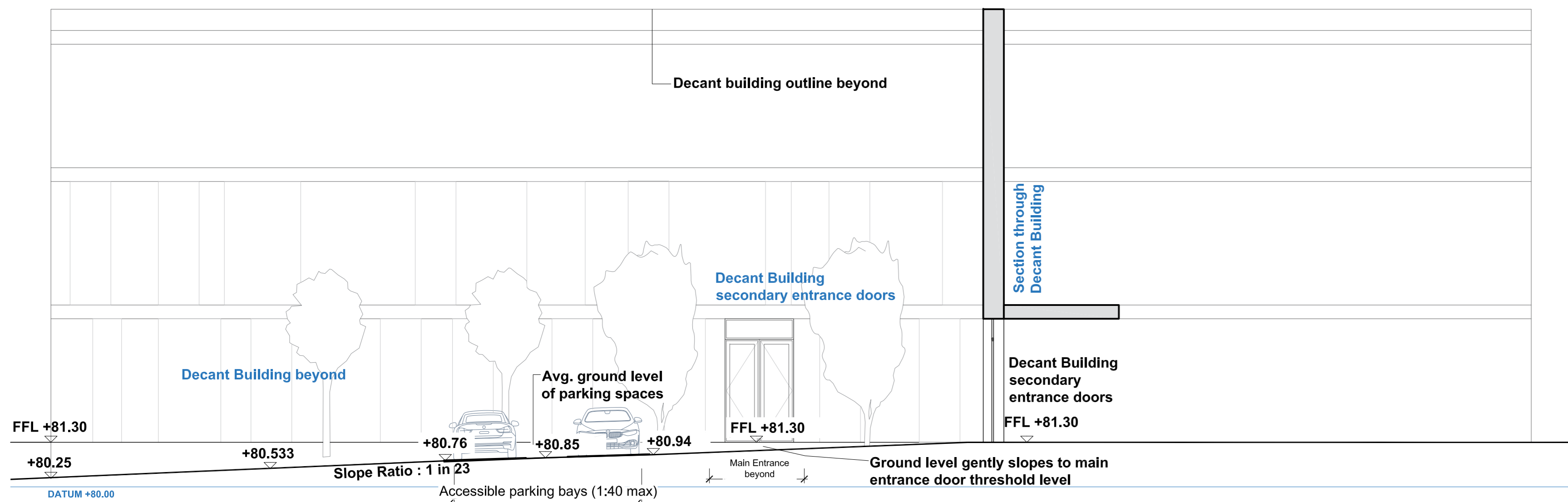
Condition 9



Section B-B (Section un-folds to show ground slope, not all context shown for clarity)
Scale 1:100

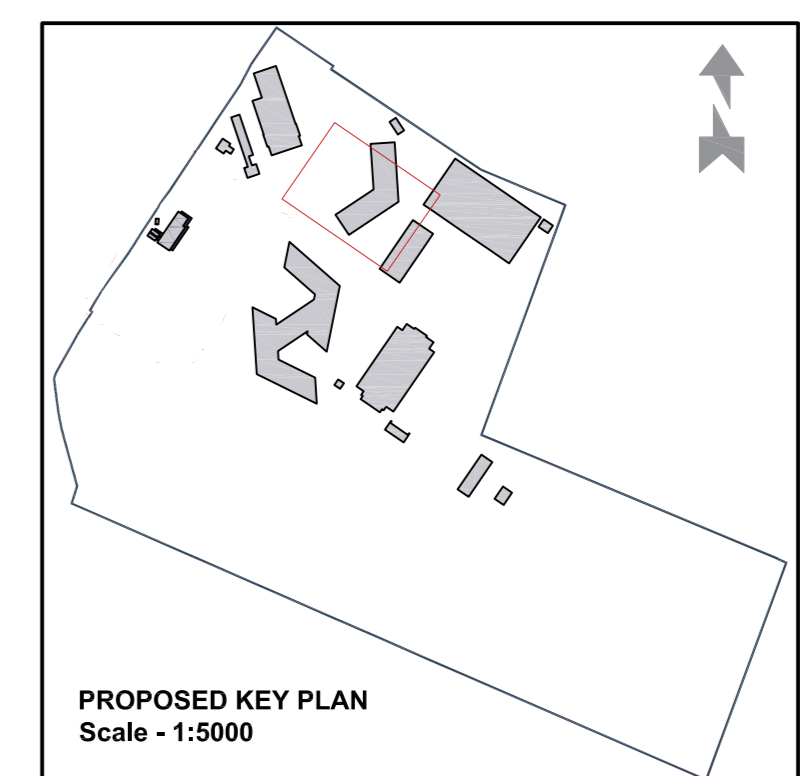
125m travel distance from parking spaces to building entrances.
Avg. 2,600mm level difference between parking and building entrance threshold
Ratio : 1 in 54 (maximum gradient 1:23)

NB It is expected that this route will be infrequently used as there are 2 no. DDA compliant spaces associated with this building within close proximity. The 3 no. spaces shown are intended for staff / visitors to the main HQ. They are shown here for clarity.



Section A-A
Scale 1:100

11m travel distance from parking spaces to building entrances.
Avg. 480mm level difference between parking and building entrance threshold
Ratio : 1 in 23



PL01 For Discharge of Planning Conditions	29/11/22	CB
REV	DATE	BY

**HERTFORDSHIRE CONSTABULARY,
HEADQUARTERS REDEVELOPMENT,
STANBOROUGH**

**Proposed Site Plan
Decant accessible parking route to entrance
Condition 9 - Sheet 2**

VGA PROJECT NUMBER	LAL	
7645		
DRAWING REFERENCE	REV	
HCHQ-VGA-XX-XX-DR-AR-00146	PL01	
DRAWN / DATE	CHECKED / DATE	SCALE
CB AUG 22	MC AUG 22	1:100 at A0

PLANNING APPROVAL

Written dimensions to be taken. Do not scale off the drawings. Any discrepancies written or scaled should be brought to the attention of the architect immediately.

T: +44 (0) 1438 316 331
architect@vincents-gorling.co.uk
vincents-gorling.co.uk
Vincents and Gorling Limited, Sterling Court
Notion Road, Stonehouse, Herts SG1 2JY
© Copyright Vincents and Gorling Limited 2017.

0mm A0 ORIGINAL SCALE 50mm A0 ORIGINAL SCALE 100mm

29/11/2022 - 15:50:04