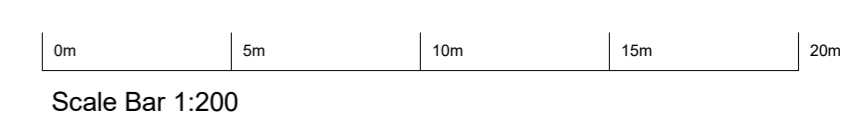




Area Schedule (GIA)	
Level	Area
00B_LGF_FFGL	322 m ²
000_GF_FFL Complete	997 m ²
001_FF_FFL	996 m ²
002_SF_FFL	996 m ²
Grand total	3311 m²

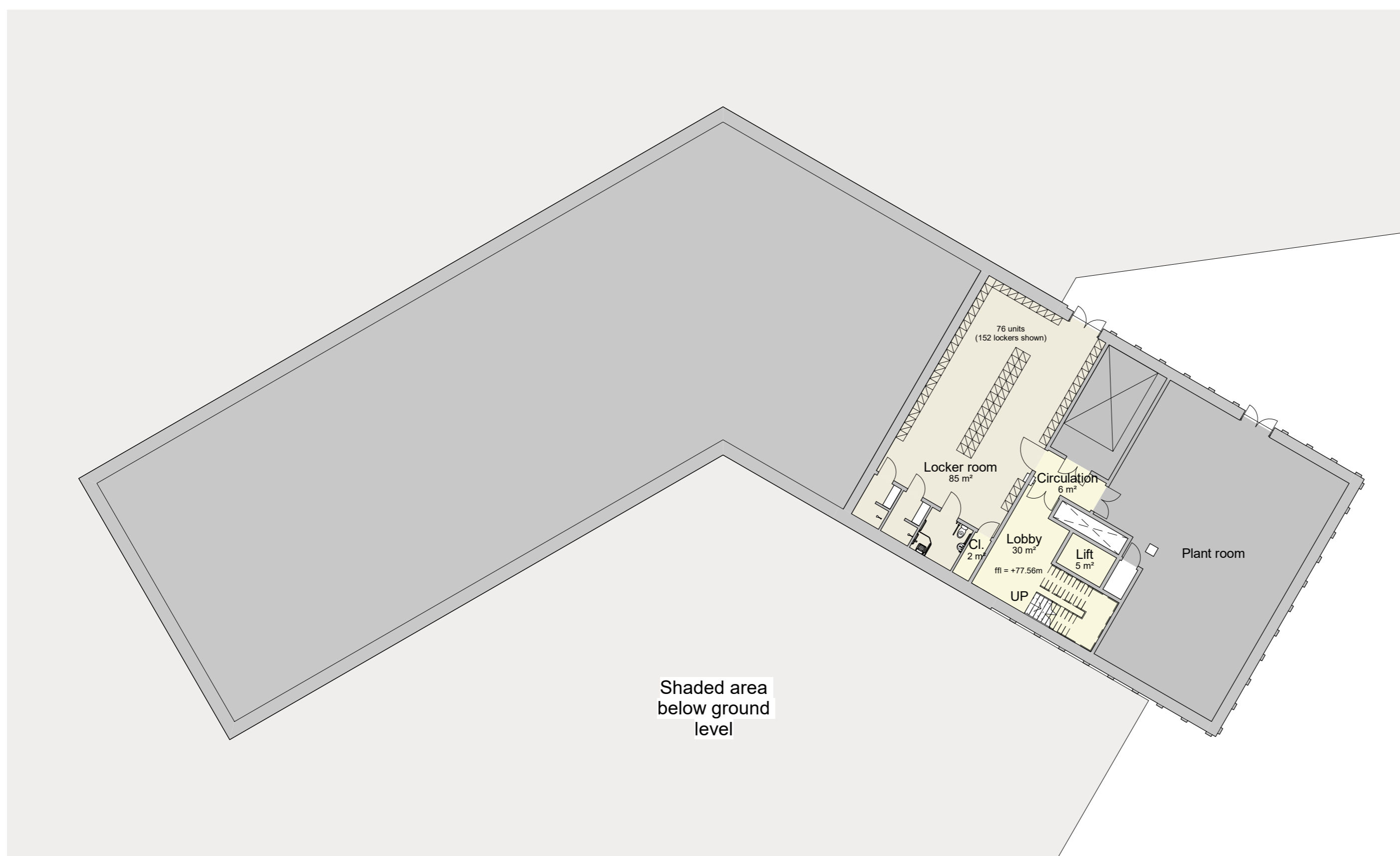
- Key**
- Circulation and Welfare
 - Fitness Suite
 - Meeting rooms
 - Office
 - Shared accommodation



Ground Floor - Complete
1 : 200



Ground Floor - Phase 1
1 : 200



Lower Ground Floor
1 : 200

PL01 For planning approval.	01/07/21	SC
REV	DATE	BY

**HERTFORDSHIRE CONSTABULARY,
HEADQUARTERS REDEVELOPMENT,
STANBOROUGH**

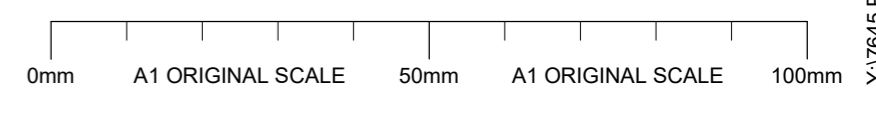
**North Decant Building
Proposed Lower Ground Floor and
Ground Floor**

VGA PROJECT NUMBER	L&L	
7645		
DRAWING REFERENCE	REV	
HCHQ-VGA-HN-ZZ-DR-AR-00 650	PL01	
DRAWN / DATE	CHECKED / DATE	SCALE
SC APR 21	MC APR 21	1 : 200

PLANNING ISSUE

Written dimensions to be taken. Do not scale off the drawings. Any discrepancies written or scaled should be brought to the attention of the architect immediately. All drawings should be read together and in conjunction with relevant related specifications, room data sheets and all other consultant's information.

T: +44 (0) 1438 316 331
architects@vincent-gorbing.co.uk
vincent-gorbing.co.uk
Vincent and Gorbing Limited, Starling Court
Norton Road, Stevenage, Hertfordshire SG1 2JY
© Copyright Vincent and Gorbing Limited 2017.



Y:\7645 Project Phoenix New Police Headquarters\2-VGA Drawings\2-Revit Models\HCHQ-VGA-HN R2021-Core revision.rvt