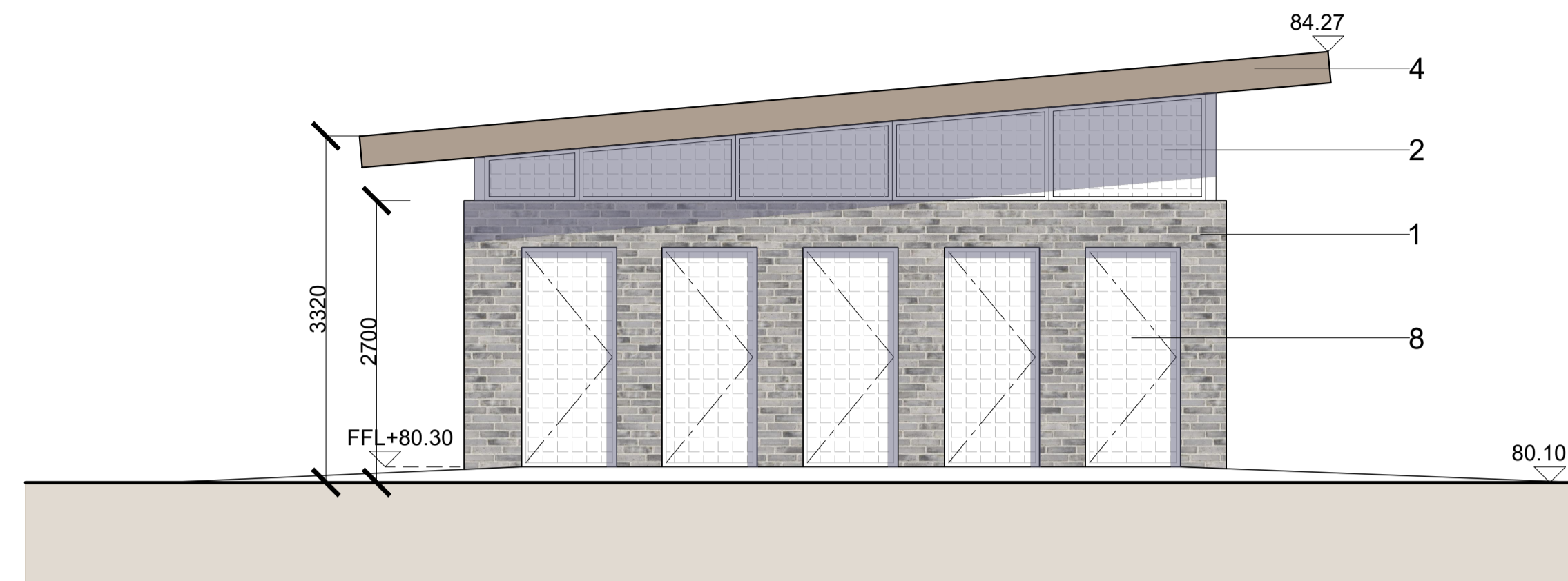
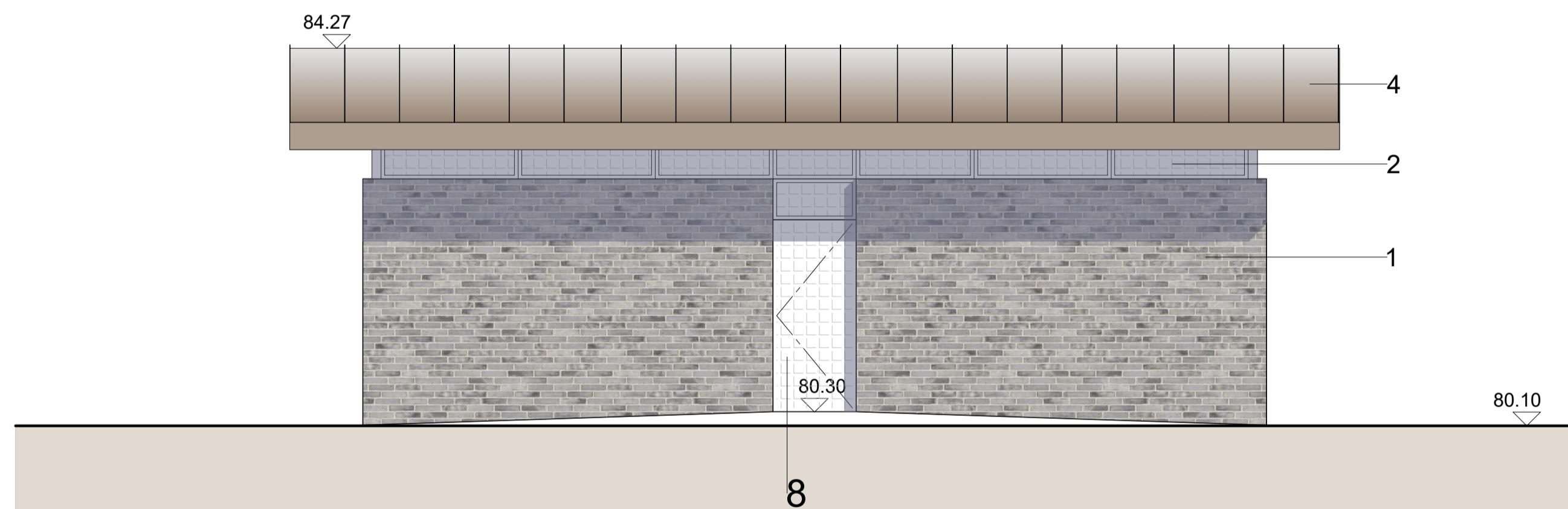


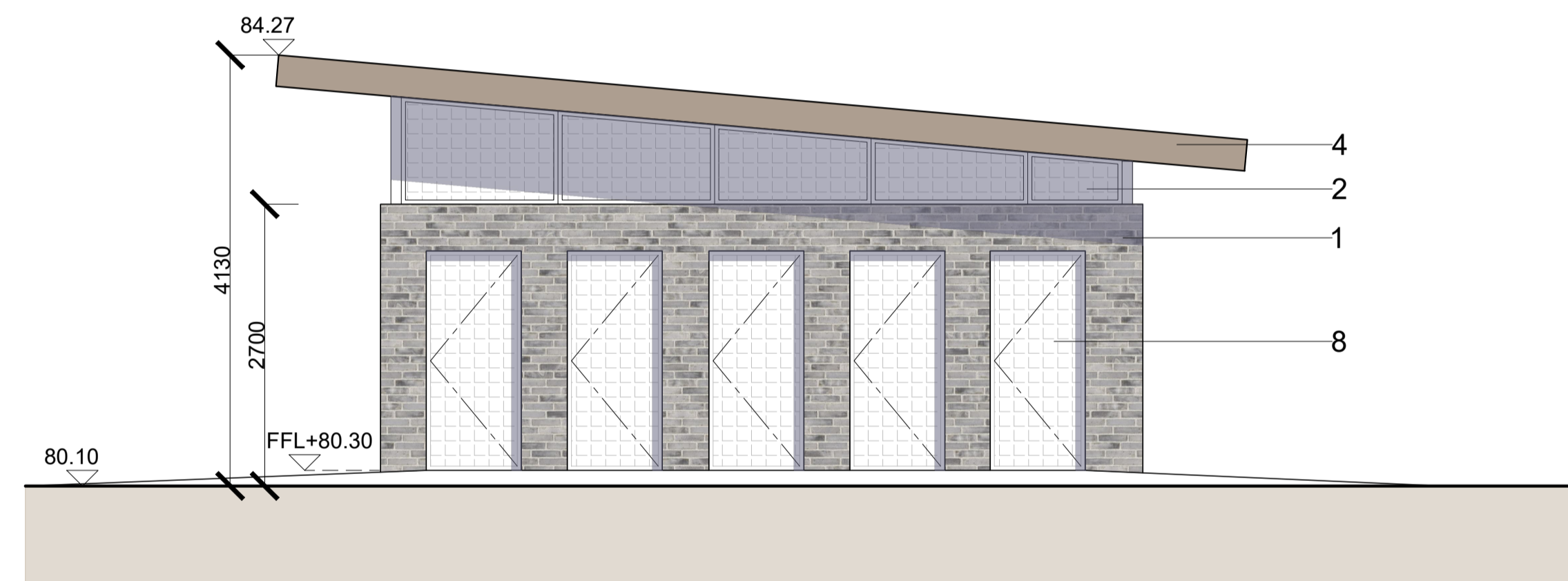
West Elevation



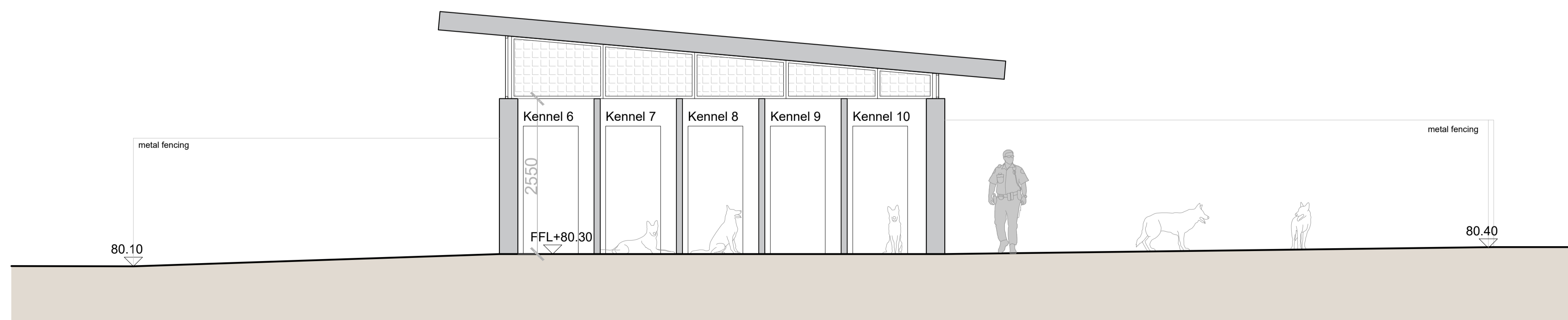
North Elevation



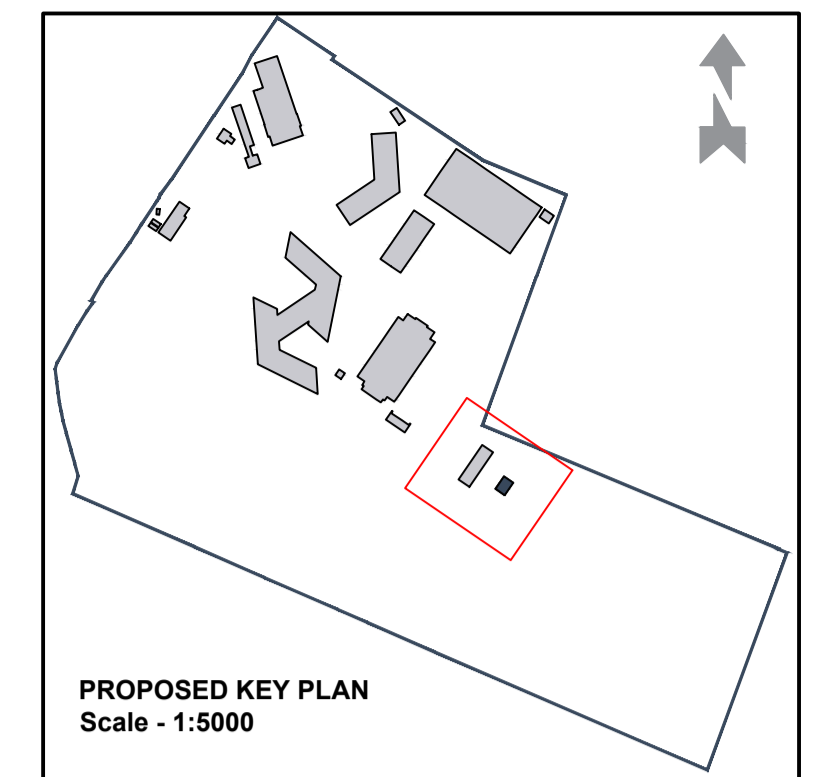
East Elevation



South Elevation



Section C-C



**MATERIALS KEY**

- WALLS**
- 1 Brickwork - Mid-grey brickwork from the Petersen Tegl range or equally approved with light buff lightly recessed mortar joint. Brick reference D91
  - 2 Metal woven wire mesh panels
- WINDOWS**
- 3 Bronze anodised aluminium framed clear Double Glazed window
- ROOF**
- 4 Metal zinc standing seam roof. Bronze colour
  - 5 Metal zinc soffit. Bronze colour
- DOORS**
- 6 Aluminium doorset with bronze anodised aluminium finish. Clear Double Glazing
  - 7 Aluminium doorset with bronze anodised aluminium finish.
  - 8 Metal woven wire mesh doors
  - 9 Roller shutter. Bronze anodised aluminium finish
- SHADING**
- 10 Horizontal solar shading for south facing windows. Bronze anodised aluminium finish

REV	DESCRIPTION	DATE	BY
PL01	For planning approval	09.07.21	CB

**HERTFORDSHIRE CONSTABULARY,  
HEADQUARTERS REDEVELOPMENT,  
STANBOROUGH**

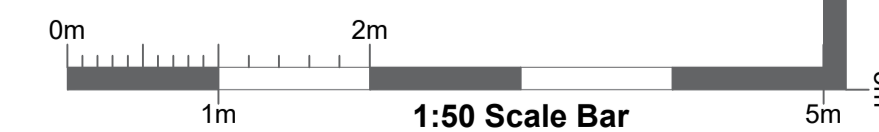
**Dog Unit  
Kennel Building and Compound  
Proposed Elevations and Section**

VGA PROJECT NUMBER		L&L
<b>7645</b>		
DRAWING NO		REV
<b>HCHQ-VGA-EW-XX-DR-AR-00382</b>		<b>PL01</b>
DRAWN / DATE	CHECKED / DATE	SCALE
CB JUL 21	MC JUL 21	1:50 at A1

**PLANNING ISSUE**

Written dimensions to be taken. Do not scale off the drawings. Any discrepancies written or scaled should be brought to the attention of the architect immediately. All drawings should be read together and in conjunction with relevant related specifications, room data sheets and all other consultant's information.

T: +44 (0) 1438 316 331  
architects@vincent-gorbing.co.uk  
vincent-gorbing.co.uk  
Vincent and Corbing Limited, Sterling Court  
Norton Road, Stevesage, Hertfordshire SG1 2JY  
© Copyright Vincent and Corbing Limited 2020



0mm A1 ORIGINAL SCALE 50mm A1 ORIGINAL SCALE 100mm

02/07/2021 - 13:24:17