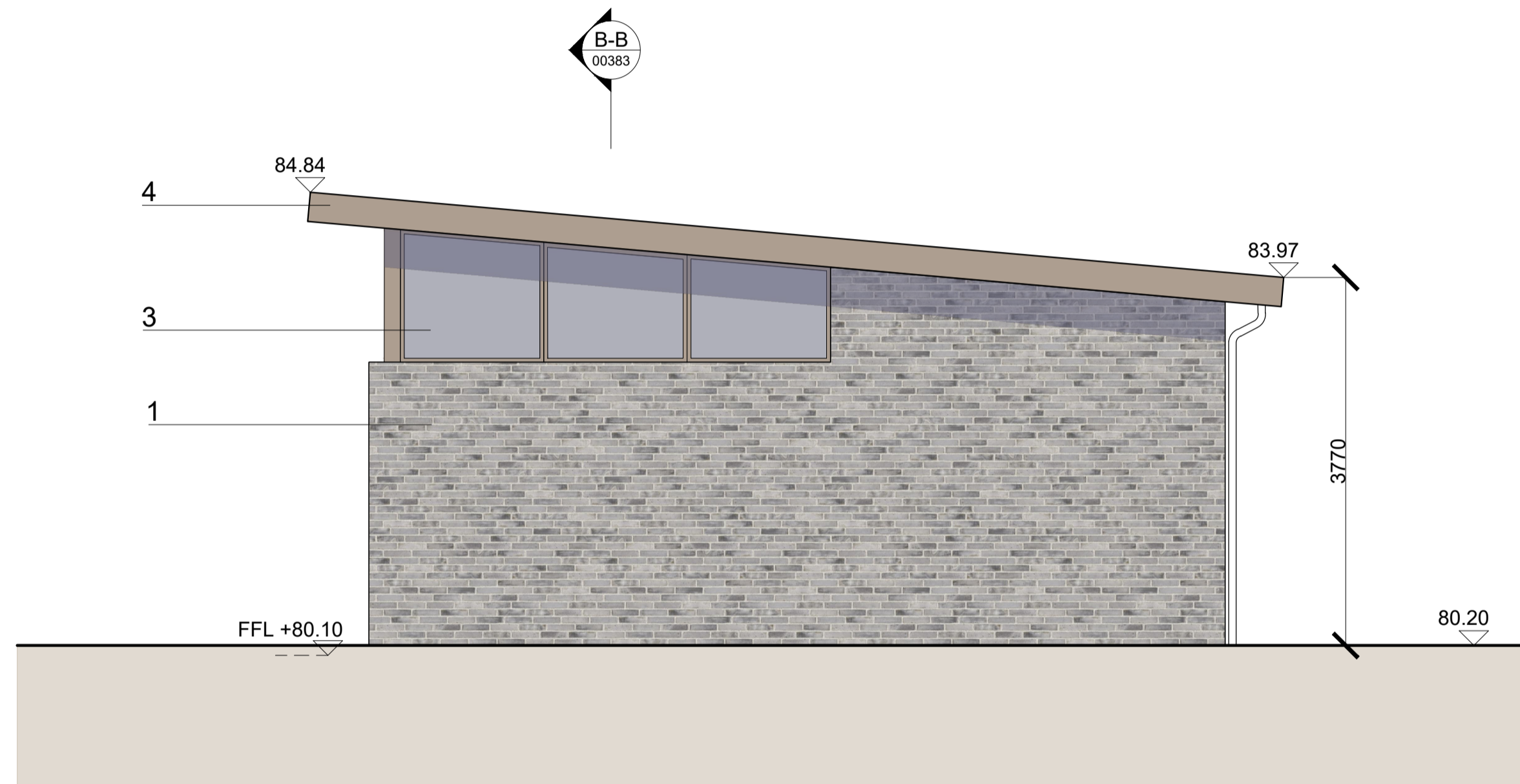
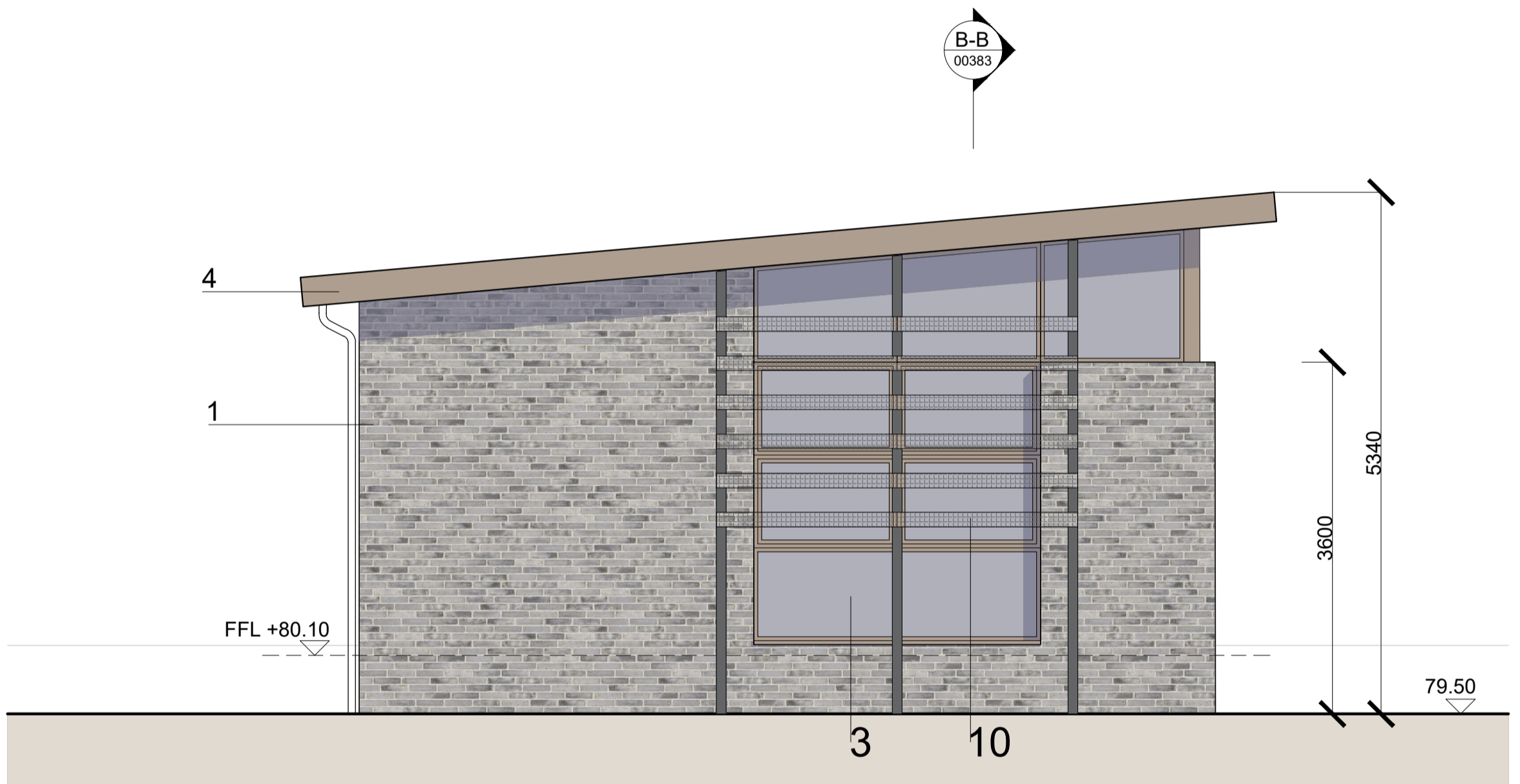


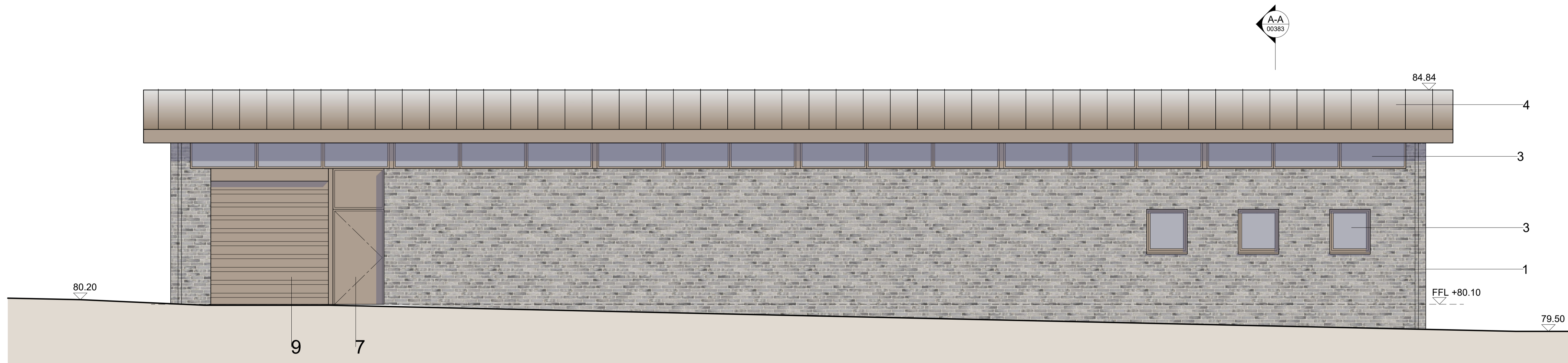
East Elevation



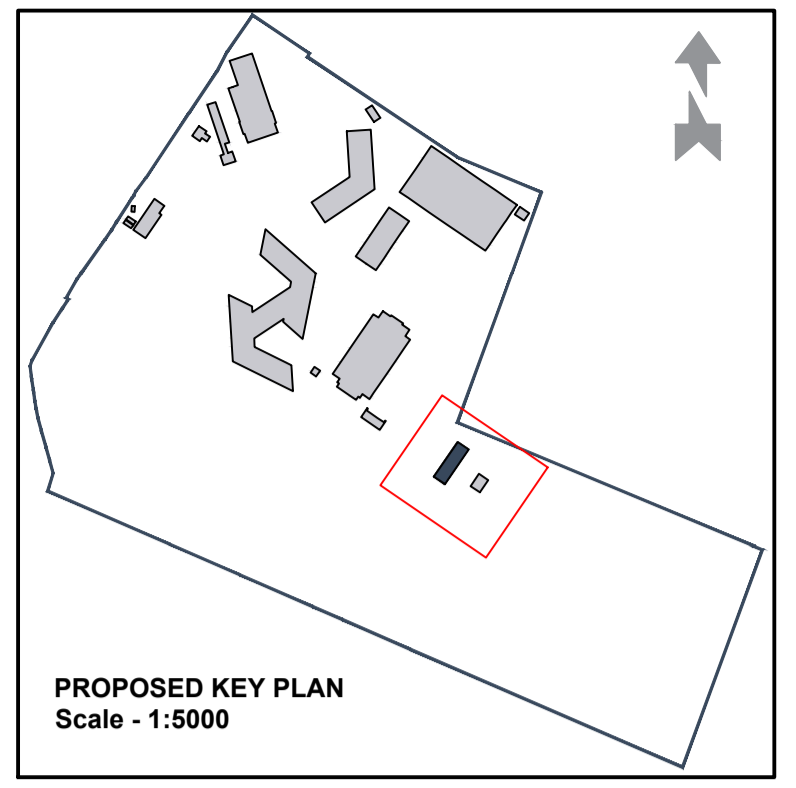
North Elevation



South Elevation



West Elevation



**MATERIALS KEY**

**WALLS**

- Brickwork - Mid-grey brickwork from the Petersen Tegl range or equally approved with light buff lightly recessed mortar joint. Brick reference D91
- Metal woven wire mesh panels

**WINDOWS**

- Bronze anodised aluminium framed clear Double Glazed window

**ROOF**

- Metal zinc standing seam roof. Bronze colour
- Metal zinc soffit. Bronze colour

**DOORS**

- Aluminium doorset with bronze anodised aluminium finish. Clear Double Glazing
- Aluminium doorset with bronze anodised aluminium finish.
- Metal woven wire mesh doors
- Roller shutter. Bronze anodised aluminium finish

**SHADING**

- Horizontal solar shading for south facing windows. Bronze anodised aluminium finish

PL01	For planning approval	09.07.21	CB
REV	DESCRIPTION	DATE	BY

**HERTFORDSHIRE CONSTABULARY,  
HEADQUARTERS REDEVELOPMENT,  
STANBOROUGH**

**Dog Unit  
Office and Welfare Building  
Proposed Elevations**

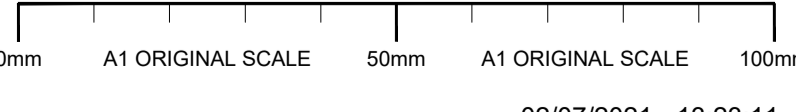
VGA PROJECT NUMBER		L&L
<b>7645</b>		
DRAWING NO		REV
<b>HCHQ-VGA-EW-XX-DR-AR-00379</b>		<b>PL01</b>
DRAWN / DATE	CHECKED / DATE	SCALE
CB JUL 21	MC JUL 21	1:50 at A1

**PLANNING ISSUE**

Written dimensions to be taken. Do not scale off the drawings. Any discrepancies written or scaled should be brought to the attention of the architect immediately. All drawings should be read together and in conjunction with relevant related specifications, room data sheets and all other consultant's information.

T: +44 (0) 1438 316 331  
architects@vincent-gorbing.co.uk  
vincent-gorbing.co.uk

Vincent and Corbing Limited, Sterling Court  
Norton Road, Stevenage, Hertfordshire SG1 2JY  
© Copyright Vincent and Corbing Limited 2020



FILE PATH = Y:\7645 Project Phoenix New Police Headquarters\2-VGA Drawings\2-Design & Planning Drawings\7645\_02\_Dog Unit Relocation\HCHQ-VGA-EW-XX-DR-AR-00379\_Proposed Dog Unit Building - Proposed Elevations.dwg / 379

