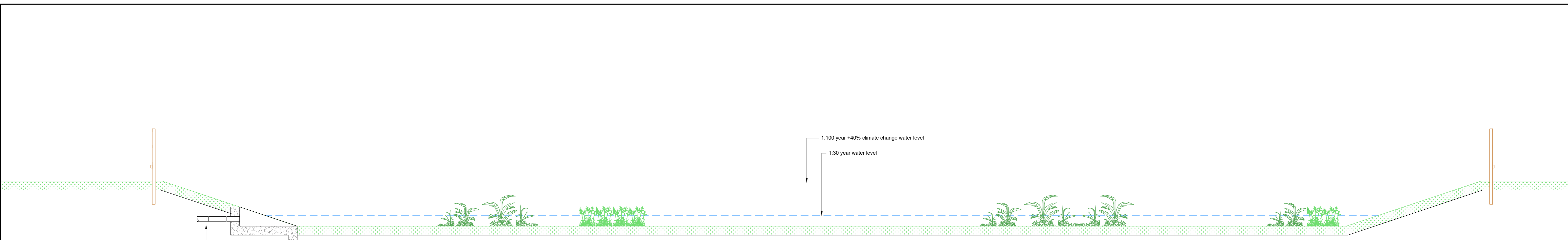
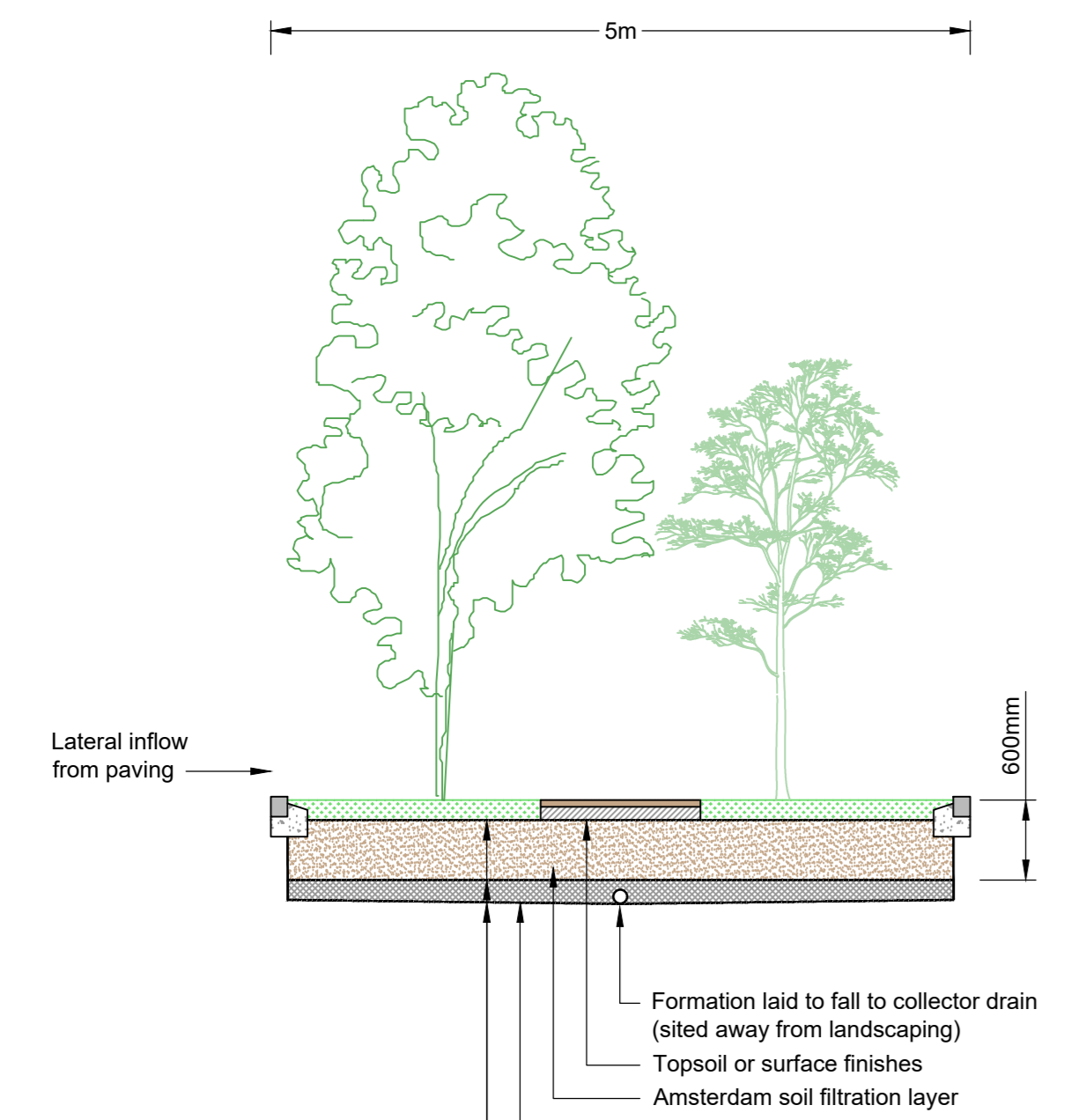


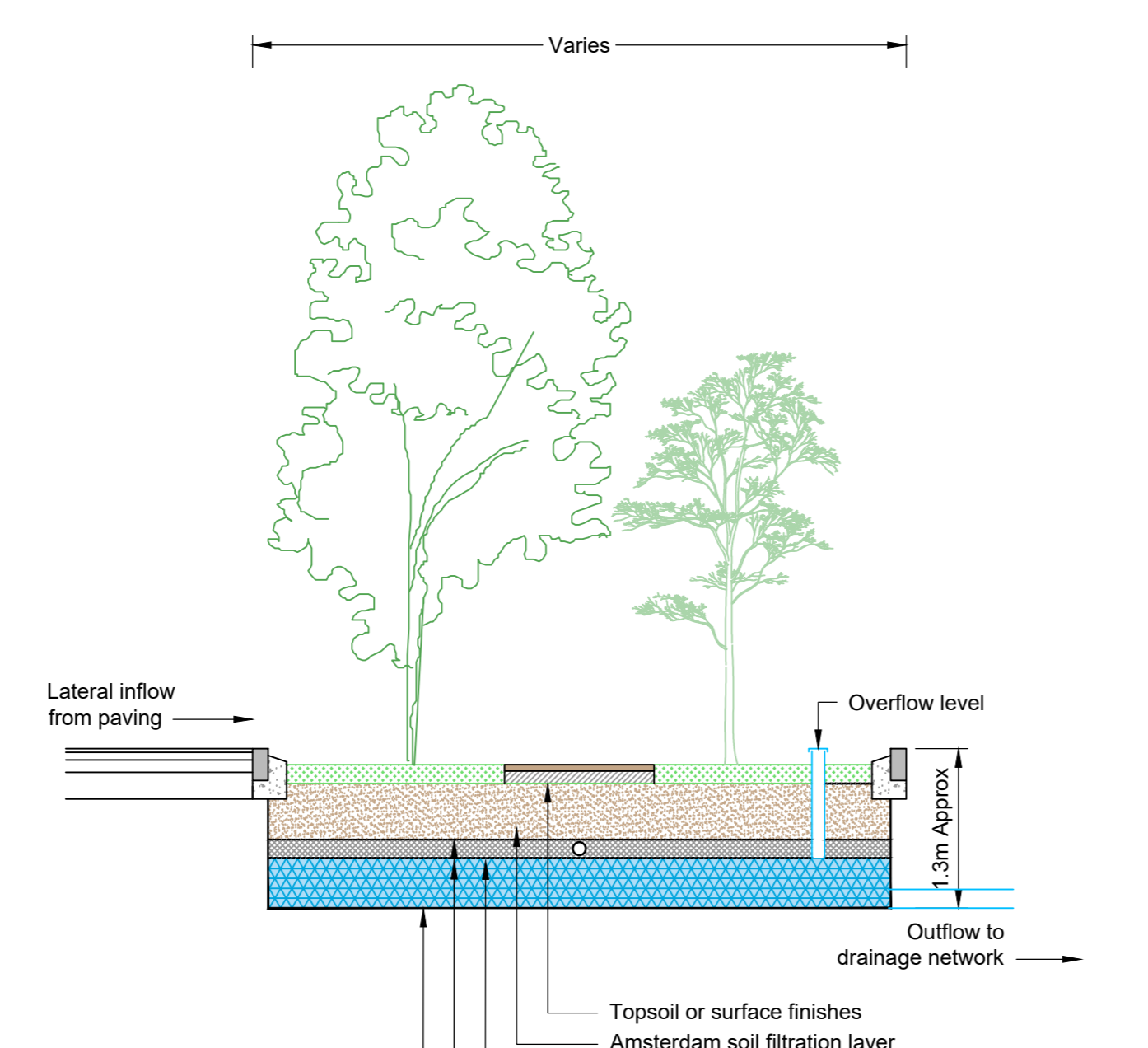
File name: I:\NA-AECOM\NET\COMPLIANCE\STALBANS-UK\STALBANS\INFRASTRUCTURE\INFRA\SUBMISSIONS\UNNUMBERED_JOBS\566-HERTFORDSHIRE POLICE STATION\HCHQ-00-DR-CE-05000 CONCEPT DRAINAGE SECTIONS DWG Last saved by: TOM ROYAL Last Picked: 2021-07-05
 Project Management Initials: Designer: TR Checked: TCR Approved: CP ISO A0 841mm x 1189mm



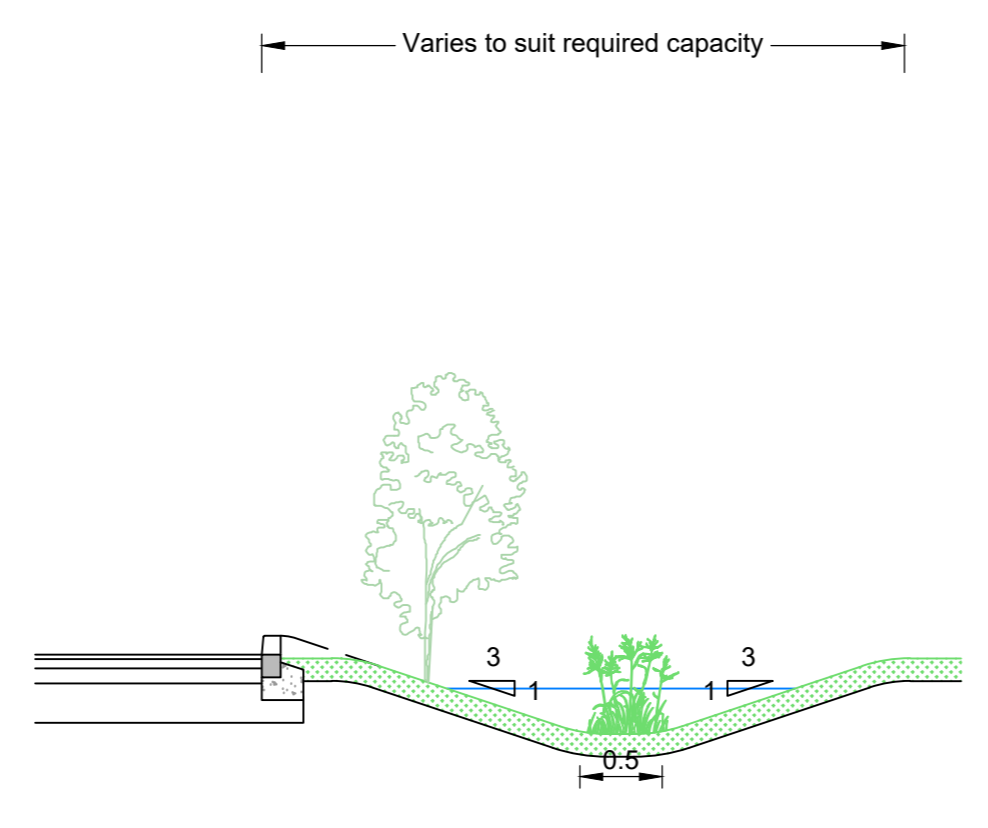
Typical Attenuation Pond
 (Section)
 Scale 1:50



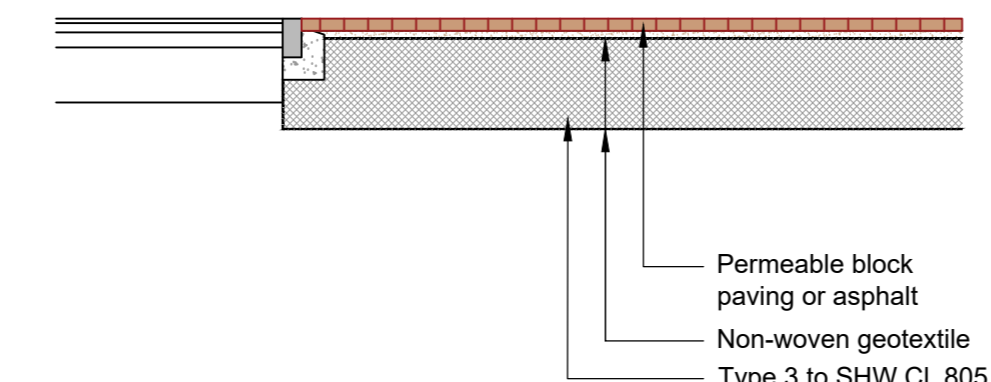
Typical Rain Garden
 (Section)
 Scale 1:50



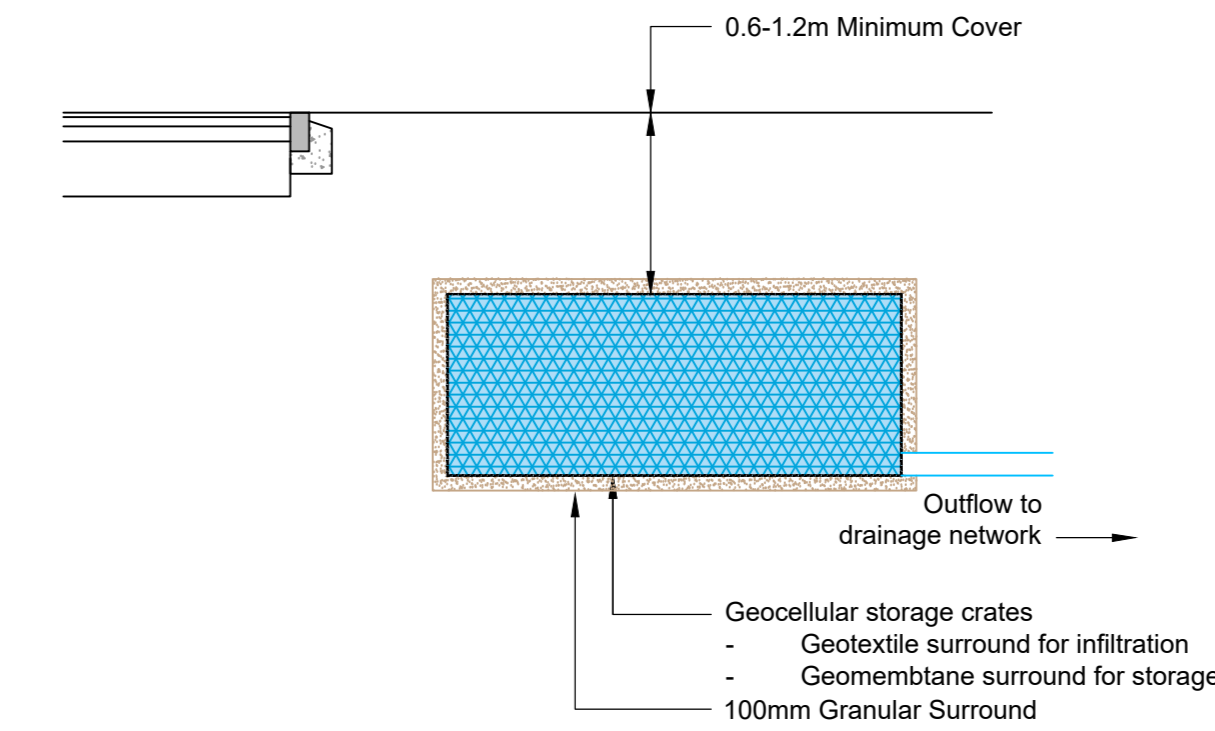
Typical Rain Garden With Additional Storage Capacity
 (Section)
 Scale 1:50



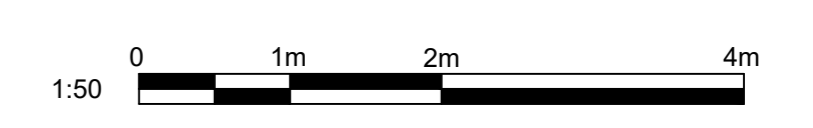
Typical Roadside Swale
 (Section)
 Scale 1:20



Typical Permeable Pavement
 (Section)
 Scale 1:50



Typical Cellular Storage
 (Section)
 Scale 1:50



ISSUE/REVISION				
Rev	Date	Detail	Drawn	Checked
PO2	05.07.21	Details amended	TR	TCR
PO2	22.06.21	Revised to suit updated strategy	TR	TCR
PO1	11.06	Final issue	TR	TCR

KEY PLAN

PROJECT NUMBER
 60600329
SHEET TITLE
 Proposed SuDS Sections

SHEET NUMBER
 HCHQ-00-00-DR-CE-05000

This drawing has been prepared for the use of AECOM's client. It may not be used, modified, reproduced or relied upon by third parties, except as agreed by AECOM or as required by law. AECOM accepts no responsibility, and denies any liability, whatsoever, to any party that uses or relies on this drawing, without AECOM's express written consent. Do not scale this document. All measurements must be obtained from the stated dimensions.