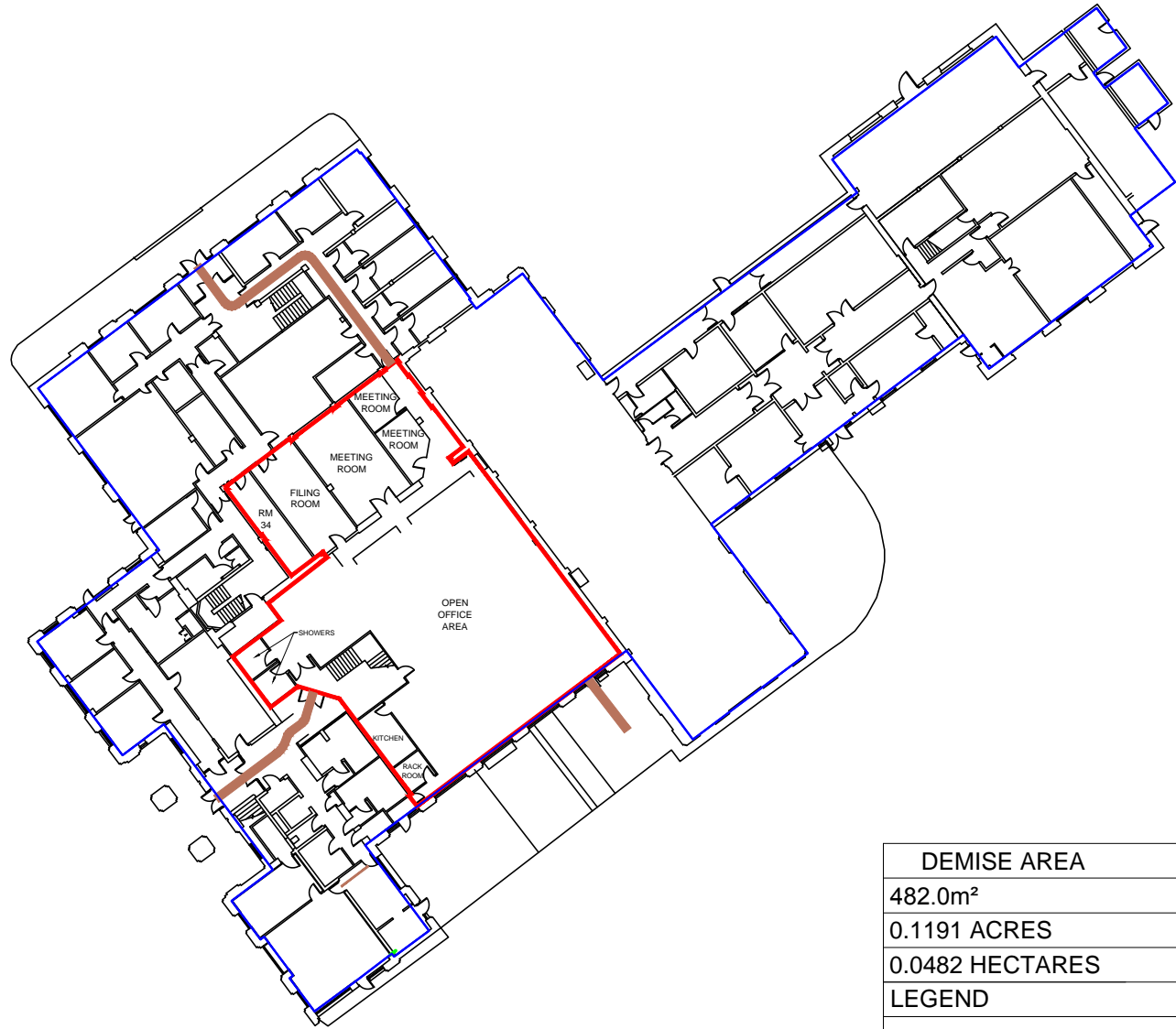


NOTES

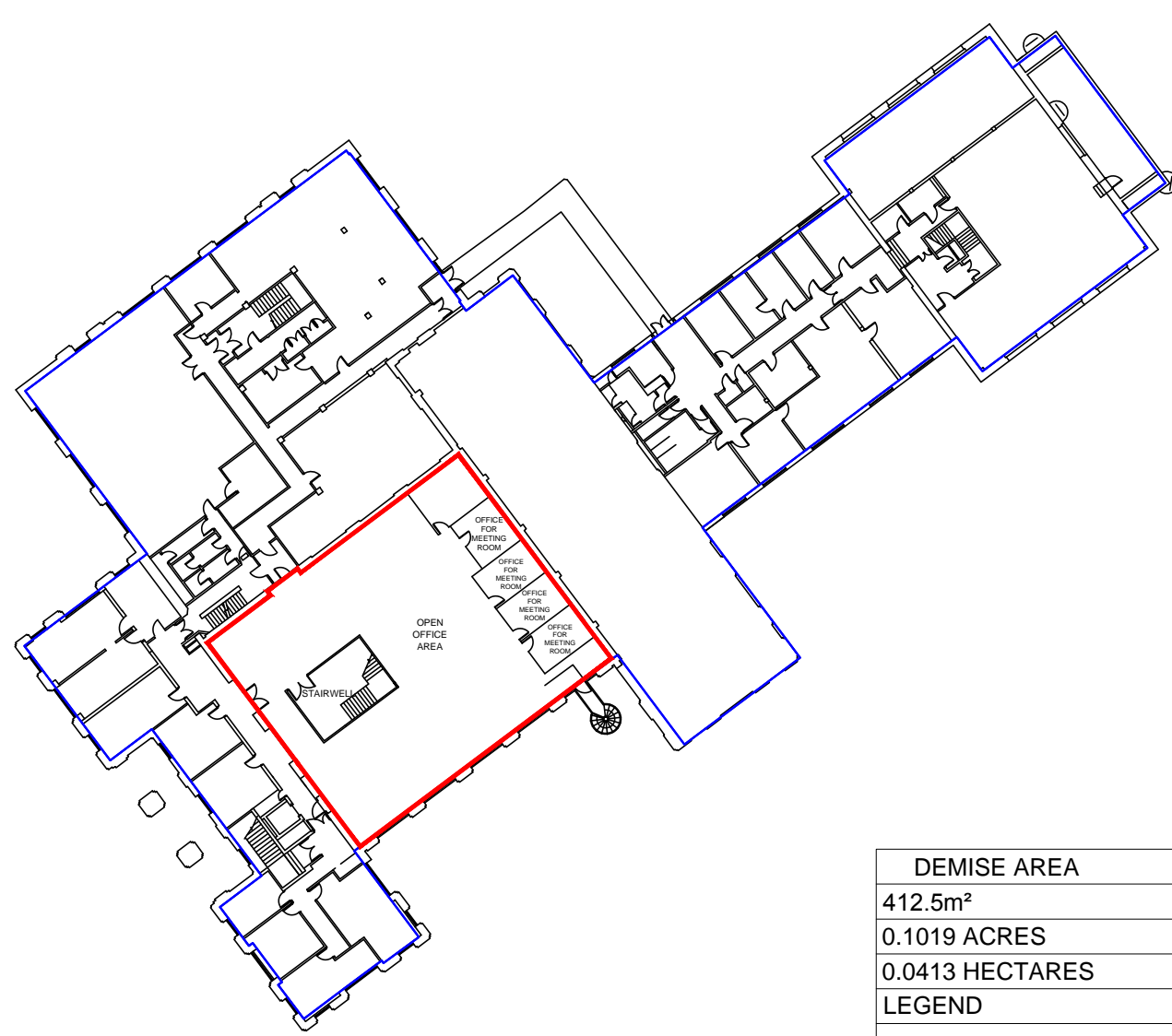
TOTAL FLOOR AREA
2325.4m <sup>2</sup>
0.5746 ACRES
0.2325 HECTARES

TOTAL FLOOR AREA
2300.0m <sup>2</sup>
0.5683 ACRES
0.23 HECTARES



DEMISE AREA
482.0m <sup>2</sup>
0.1191 ACRES
0.0482 HECTARES
LEGEND
LEASED AREA
ACCESS ROUTE

GROUND FLOOR  
 SCALE 1:500



DEMISE AREA
412.5m <sup>2</sup>
0.1019 ACRES
0.0413 HECTARES
LEGEND
LEASED AREA
ACCESS ROUTE

FIRST FLOOR  
 SCALE 1:500

PROJ No			
PROJ No			
PROJ No			
PROJ No			
PROJ No	N/A		
1	LEGAL PLAN	10/02/17	SH KML
ISS	REVISION	DATE	DRN APP



Crawley Court, Winchester, Hampshire, SO21 2QA  
 Tel. 01962 823434, Fax. 01962 822378

SITE No 140237  
 BROOKMANS PARK MF  
 ARQIVA SITE  
 BROOKMANS PARK  
 GREAT NORTH ROAD, HATFIELD  
 HERTFORDSHIRE  
 AL9 6NE

NGR TL 25948 04911  
 OS GRID 525948 204911

TITLE  
 LEGAL PLAN  
 GROUND AND FIRST FLOORS

SCALE SEE DRAWING

DRAWN	SH	10/02/17
APPROVED	KML	10/02/17

DRG No.	Sheet 1 of 1	Rev
140237-01-102-G0001		1