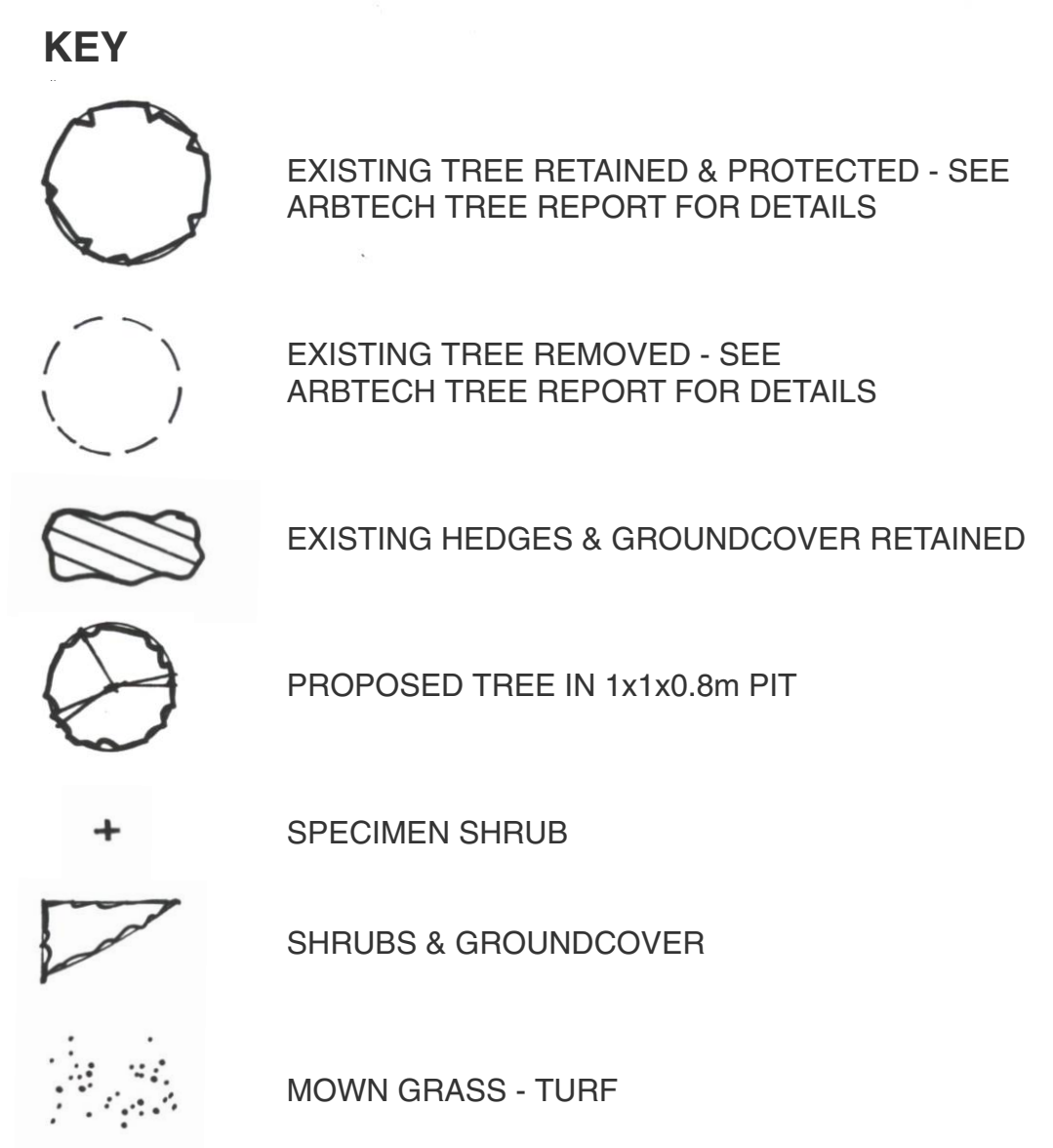


Continued on Sheet 2 Dwg. No. 2017 - 0103



- LEGEND NOTES**
- 1 Existing Lime trees on adjacent property 8m high
  - 2 Existing low shrubs & groundcover
  - 3 Existing Beech hedge on adjacent land. Av. 2m high
  - 4 Existing trees retained
  - 5 Existing trees removed
  - 6 Areas of mown grass & groundcover planting retained
  - 7 Existing hedging & shrubs retained - exact area of retention T.B.C on site
  - 8 Narrow strips at end of parking bays - mown grass

**PLANT SCHEDULE (Total for sheets 1 & 2)**

Trees

code	species	size	quantity
PHS	Platanus x hispanica	Ext. Hvy. Std, 4.25-6m high, 14-16cm girth, Container Grown, min. 80L pot	6
PSR	Prunus serrula	Ext. Hvy. Std, 4.25-6m high, 14-16cm girth, Container Grown, min. 80L pot	2
QRR	Quercus robur	Ext. Hvy. Std, 4.25-6m high, 14-16cm girth, Container Grown, min. 80L pot	5
TLE	Tilia europaea	Ext. Hvy. Std, 4.25-6m high, 14-16cm girth, Container Grown, min. 80L pot	5

All trees planted in 1 x 1 x 0.8m deep pit, backfilled with 80% clean topsoil well mixed with 20% TPWC and 100 grams granular fertiliser.  
Base of pit broken up to depth of 200mm to aid drainage. Backfill material well firmed to avoid settlement.  
All trees underground guyed using approved system and mulched with 75mm deep bark mulch.

Specimen shrubs

code	species note: all spp. min 5 breaks	pot size & height (cm)	quantity
AML	Amelanchier lamarckii	125 - 150 multi-stemmed, 45L pot	2

Plants planted in 0.6 x 0.6 x 0.4m deep pit, backfilled with 80% clean topsoil well mixed with 20% TPWC and 50 grams granular fertiliser.  
All shrubs mulched with 75mm min. deep approved bark mulch.  
Plants underground guyed as required.

Note: All shrub planting mulched with 75mm min. deep approved bark mulch.

Mix A - Groundcover Planting Total area - 80 sq. m

species (all spp. min. 5 breaks)	grouping	% of mix	quantity (no.)
Cotoneaster dammeri (front of bed)	7-11	20	30
Erica darleyensis 'White Perfection'	9-21	30	168
Hypericum 'Hidcote'	9-21	30	96
Lonicera 'Maygreen'	7-11	20	64

Erica at 7 plants per sq. m. Cotoneaster at 5 plants per sq. m & all other planting at 4 plants per sq. m. Species to be randomly mixed in groups of one species of varying sizes. Avoid straight lines, staggered.  
Plants planted in 0.3 x 0.3 x 0.4m deep pit, backfilled with 80% clean topsoil well mixed with 20% TPWC and 20 grams granular fertiliser.  
All species 15-35cm height/spread. 5L pot grown.

Mix B - Groundcover Planting Total area - 124 sq. m

species (all spp. min. 5 breaks)	grouping	% of mix	quantity (no.)
Hebe franciscana 'Vansago'	7-11	30	149
Hebe rakienis	9-21	30	149
Rosa 'Scented Carpet' (front of bed)	11-25	40	198

All planting at 4 plants per sq. m. Species to be randomly mixed in groups of one species of varying sizes. Avoid straight lines, staggered.  
Plants planted in 0.3 x 0.3 x 0.4m deep pit, backfilled with 80% clean topsoil well mixed with 20% TPWC and 20 grams granular fertiliser.  
All species 15-35cm height/spread. 5L pot grown.

Mix C - Groundcover Planting Total area - 60 sq. m

species (all spp. min. 5 breaks)	grouping	% of mix	quantity (no.)
Euonymus fortunei 'Emerald Gold' (front of bed)	7-11	20	48
Hebe 'White Gem' (front of bed)	9-21	30	72
Prunus laurocerasus 'Otto Luyken'	9-21	30	72
Rosa 'Flower White Carpet' (front of bed)	7-11	20	48

All planting at 4 plants per sq. m. Species to be randomly mixed in groups of one species of varying sizes. Avoid straight lines, staggered.  
Plants planted in 0.3 x 0.3 x 0.4m deep pit, backfilled with 80% clean topsoil well mixed with 20% TPWC and 20 grams granular fertiliser.  
All species 25-35cm height/spread. 5L pot grown.

Mown Grass  
All mown grass areas to be 'Rokawn' or similar approved turf. Sample of turf to be approved prior to delivery to site. Areas of grass to be spread with 150mm deep topsoil.

NOTE:  
Correct species to be provided and no substitutions to be made without prior agreement of the Landscape Architect

**GENERAL NOTES**

- Contractor shall establish location of all services & drainage before starting any work
- Groundwork - soil levels for shrub beds and areas of grass should have any compacted subgrade thoroughly broken up by machine before instructing the groundworker/landscape contractor to spread topsoil. All rubble, concrete etc to be removed before spreading topsoil
- Ensure narrow planting beds are free of concrete footings before planting. If the concrete cannot be removed then the section of bed shall be paved or spread with gravel
- All imported topsoil to BS 3882:2015 multipurpose grade. Minimum topsoil depths to be in accordance with the plant schedule on this drawing
- General plant stock to conform to BS3936 and planting to BS4428:1989. Contractor shall give the Landscape Architect the opportunity of inspecting all plant stock at a holding nursery before delivery to site
- Establishment maintenance for 12 months for all planting to include weed control, watering and replacement of failures (to the original Specification) in the planting season following failure. Particular attention given to watering trees during prolonged dry spells
- The developer/client shall be responsible for ensuring foundation design accommodates all proposed and existing tree planting with reference to the current NHBC guidance

**NOTE:**  
REFER TO SRA ARCHITECTS & ENGINEERS PLANS FOR ALL DETAILS OF EXTERNAL WORKS AND DRAINAGE  
FINAL POSITIONS OF ALL TREES TO BE PEGGED AND AGREED ON SITE  
PLAN TO BE READ WITH DWG. NO. 2017 - 0103 (Planting Plan Sheet 2 of 2)



PROJECT  
**GRANGE MULTI-BRAND HATFIELD**

DRAWING  
**Planting Plan Sheet 1 of 2**

Scale: 1:250 @ A0  
Drawn by: TG Date: January 2018

DRAWING NUMBER  
**2017 - 0102**

© Copyright TGD Landscape Ltd