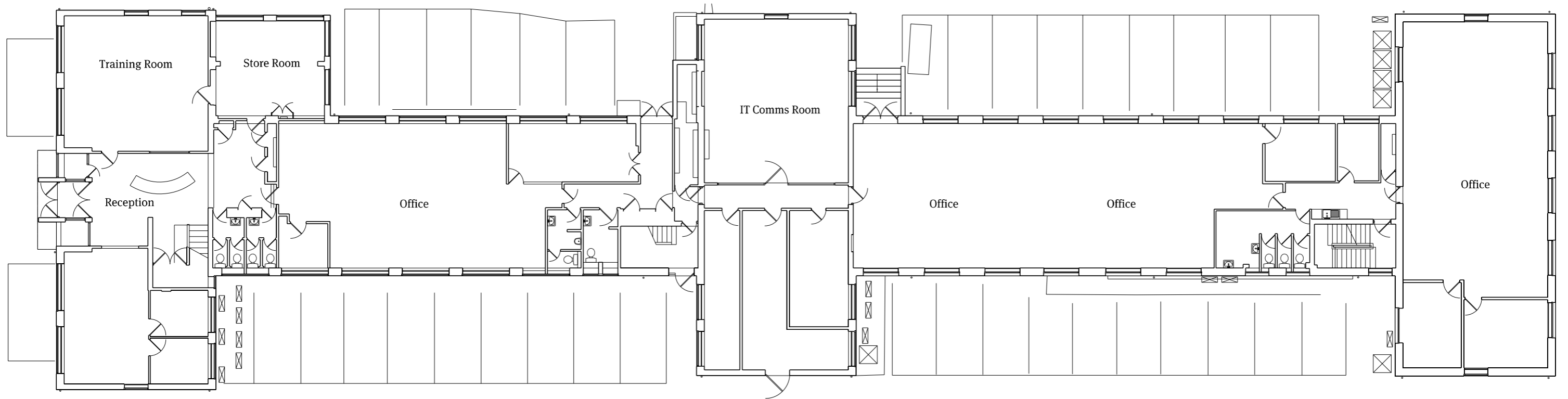


**01** Existing Lower Ground Floor Plan  
1:200 @A3



**02** Existing Ground Floor Plan  
1:200 @A3

**PAPA**  
Papa Architects Ltd.  
222 Archway Road, Highgate,  
London N6 5AX  
Phone. +44(0)20 8348 8411  
Fax. +44 (0)20 8348 7411  
www.papaarchitects.co.uk

Client

Address  
Everest House, Sopers Road,  
Cuffley, Potters Bar, EN6 4SG

Drawing title  
Existing Lower Ground  
and Ground Floor Plan

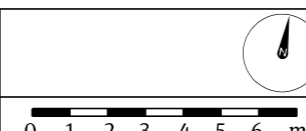
Project No. Date  
2011 April 20

Scale  
1:200@A3

Drawing No.  
90 201

Current Rev  
P01

Rev	Date	Reason For Issue	Chk



**Notes**  
All dimensions must be checked and Papa Architects are to be informed of any discrepancies prior to construction. Any DWG's issued by PAPA architects are to be read in conjunction with the associated PDF versions. This drawing and any of the details therein remain the copyright of Papa Architects Ltd. All drawings prepared by Papa Architects are not to be used for any submissions, area schedule calculations or used by any other Persons or Companies other than Papa Architects Ltd unless written consent has been given by Papa Architects Ltd.