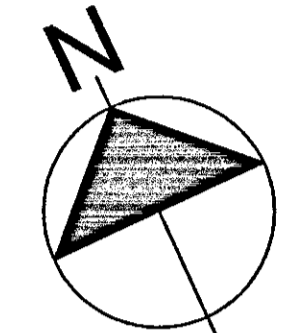
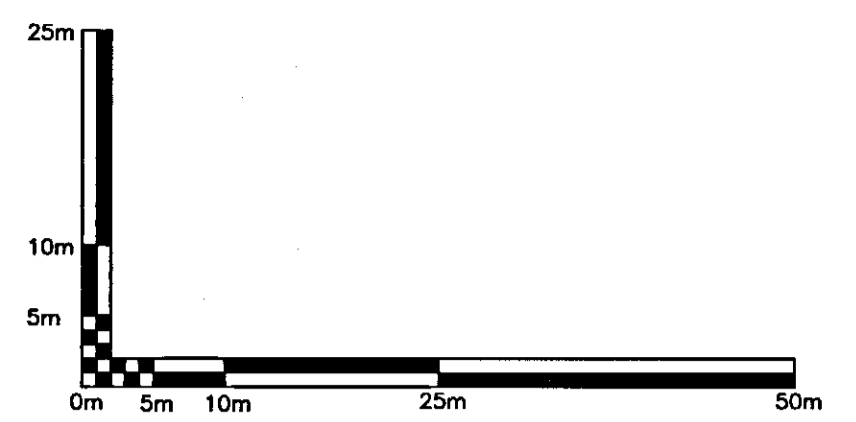
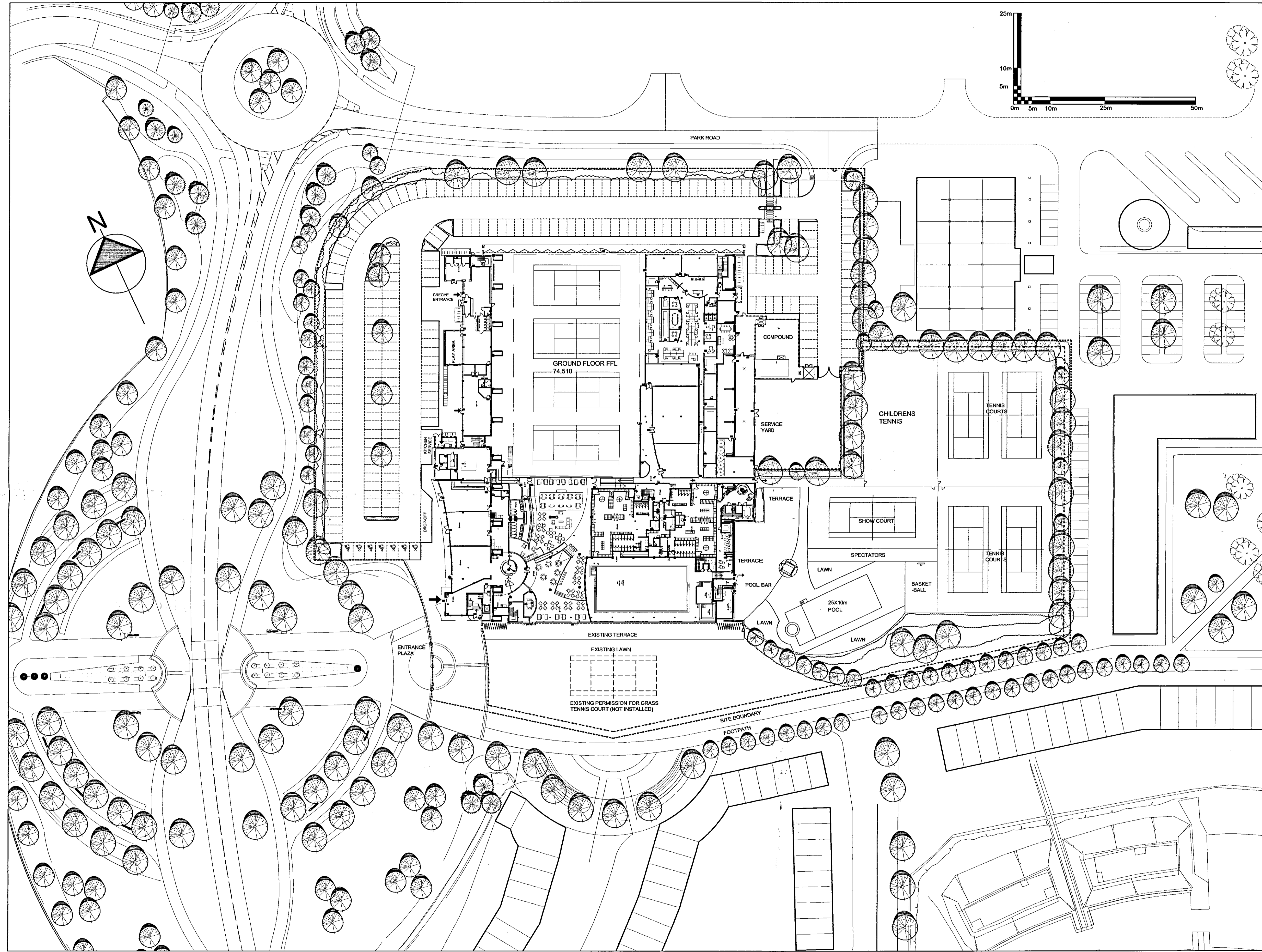


This drawing is the copyright of Roberts Limbrick Ltd and should not be reproduced in whole or in part or used in any manner whatsoever without their written permission.

| rev. | date | description |
|------|------|-------------|
| | | |



PLANNING DEPARTMENT OFFICE COPY
16 JUN 2009
No. S6/2009/1019/F9

Roberts Limbrick
ARCHITECTS

project
NEW TENNIS COURTS

client
DAVID LLOYD LEISURE
drawing
EXISTING SITE PLAN

status
PLANNING

ROBERTS LIMBRICK LTD
Chedworth House, Falcon Close,
Quedgeley, Gloucester, GL2 4LY
T. 03333 405 500
F. 03333 408 920
mail@robertslimbrick.com
www.robertslimbrick.com
Registered Office: England No. 06658029

date 05.05.2009 scale 1:500 @ A1
proj no 1109 author DRJ

dig no. rev.
L(0)10