

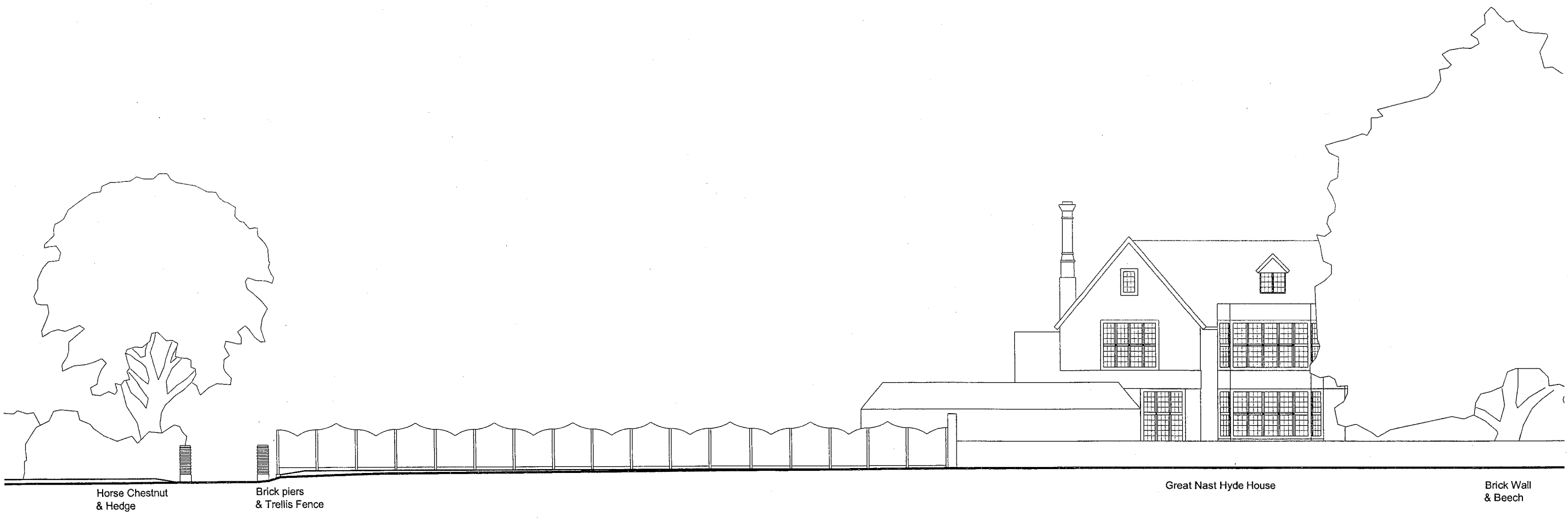
Existing North Gates 1:200

WELWYN HATFIELD
 PLANNING
 OFFICE COPY
 15 OCT 2007
 No:

WELWYN HATFIELD
 PLANNING
 OFFICE COPY
 15 OCT 2007
 No: **B6/07/1521/FP**

GREAT NAST HYDE HOUSE EXISTING NORTH GATES
 Scale 1:200 Date Oct 2003 Drawn NRH No. 6103/G/004 Rev. -

RUSSELL TAYLOR ARCHITECTS
 www.rtaarchitects.co.uk
 TEL: 020 7261 1984
 TEL: 01503 275 092
 mail@rtaarchitects.co.uk
 LONDON
 CORNWALL
 © Russell Taylor Architects own the copyright of this drawing and design.



Horse Chestnut & Hedge

Brick piers & Trellis Fence

Great Nast Hyde House

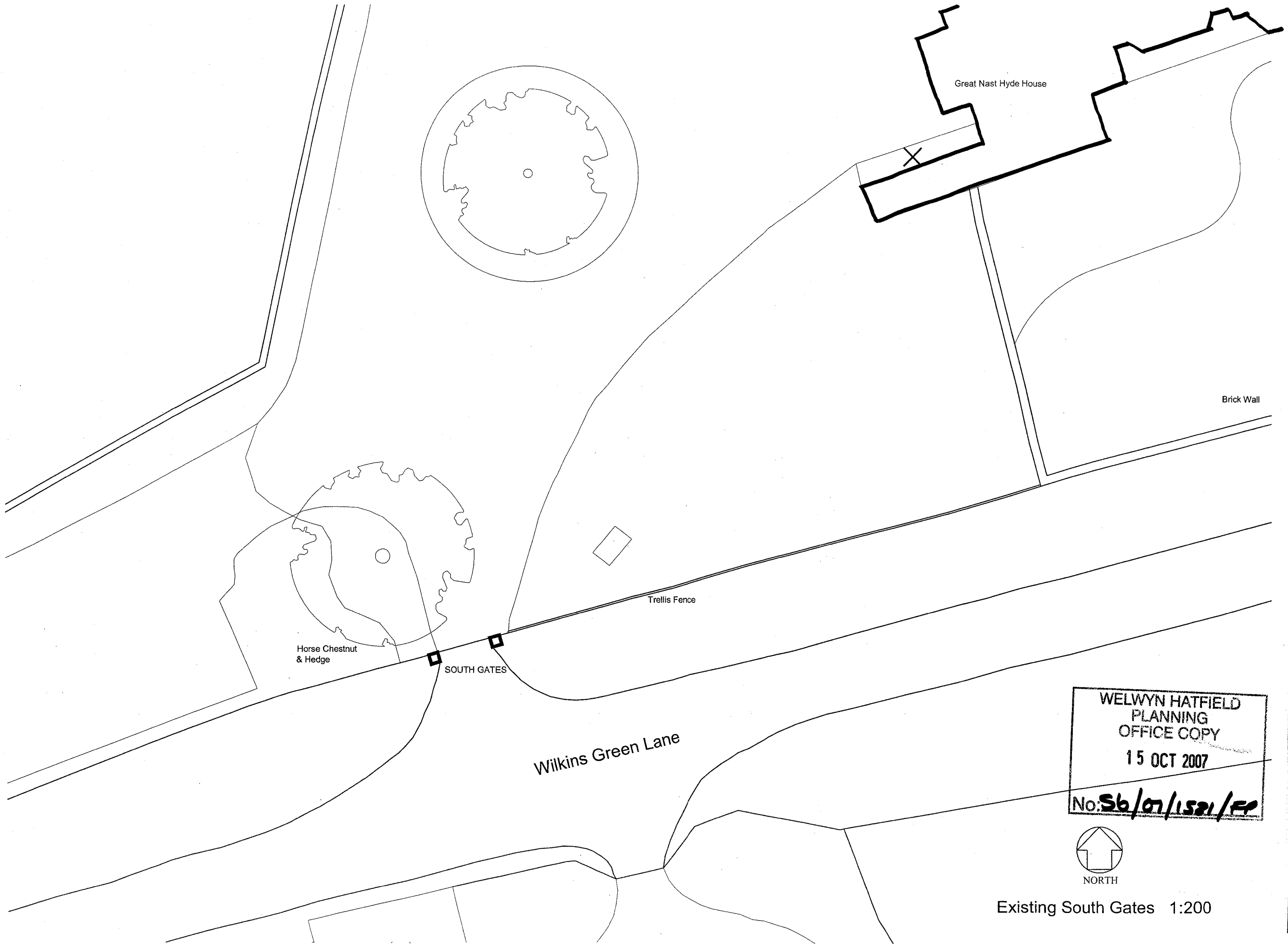
Brick Wall & Beech

Existing South Gates 1:200

WELWYN HATFIELD
 PLANNING
 OFFICE COPY
 15 OCT 2007
 No. **56/07/1521/FP**

GREAT NAST HYDE HOUSE EXISTING SOUTH GATES
 Scale 1:200 Date 20.10.03 Drawn NRH No. 6103/4/006 Rev.

RUSSELL TAYLOR ARCHITECTS
 www.rtararchitects.co.uk
 TEL: 020 7261 1984
 TEL: 01503 273 092
 mail@rtararchitects.co.uk
 LONDON
 CORNWALL
 © Russell Taylor Architects own the copyright of this drawing and design.

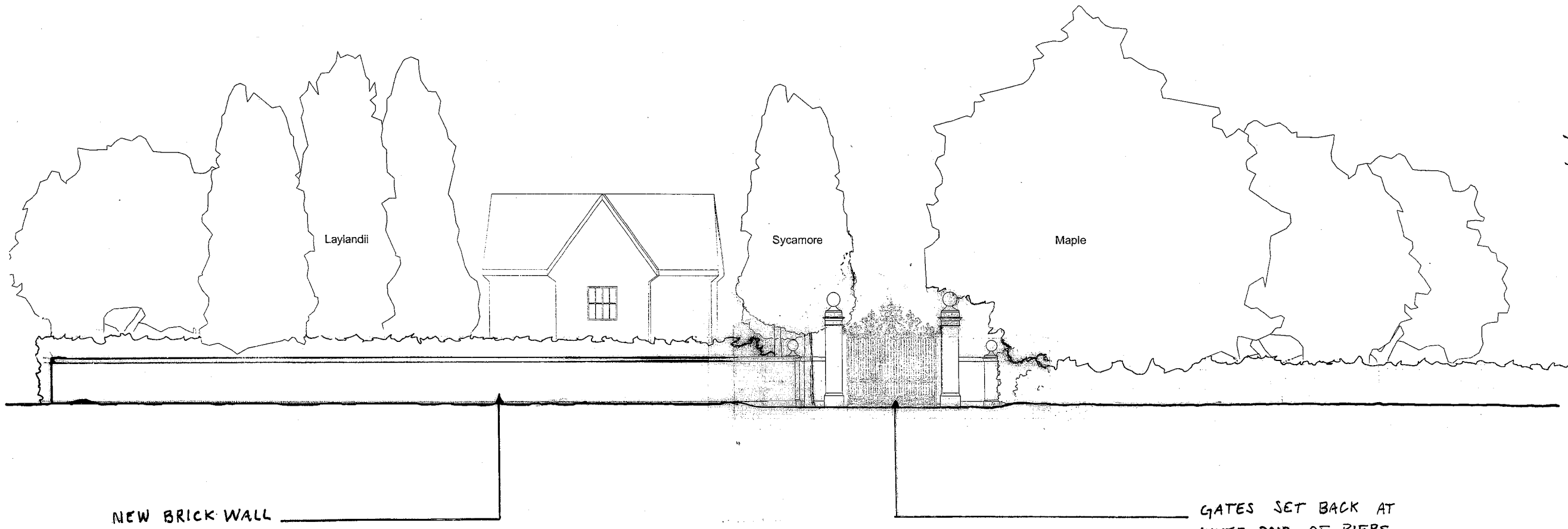


WELWYN HATFIELD
 PLANNING
 OFFICE COPY
 15 OCT 2007
 No: **S6/07/1521/FP**

Existing South Gates 1:200

GREAT NAST HYDE HOUSE EXISTING SOUTH GATES
 PLAN
 Scale 1:200 Date 20.10.03 Drawn NRH No. 6103/a/007 Rev. -

RUSSELL TAYLOR ARCHITECTS
 www.rtarclitecs.co.uk
 TEL:020 7261 1984
 TEL:01503 273 092
 mail@rtarclitecs.co.uk
 LONDON
 CORNWALL
 © Russell Taylor Architects own the copyright of this drawing and design.



NEW BRICK WALL

GATES SET BACK AT
INNER PAIR OF PIERS

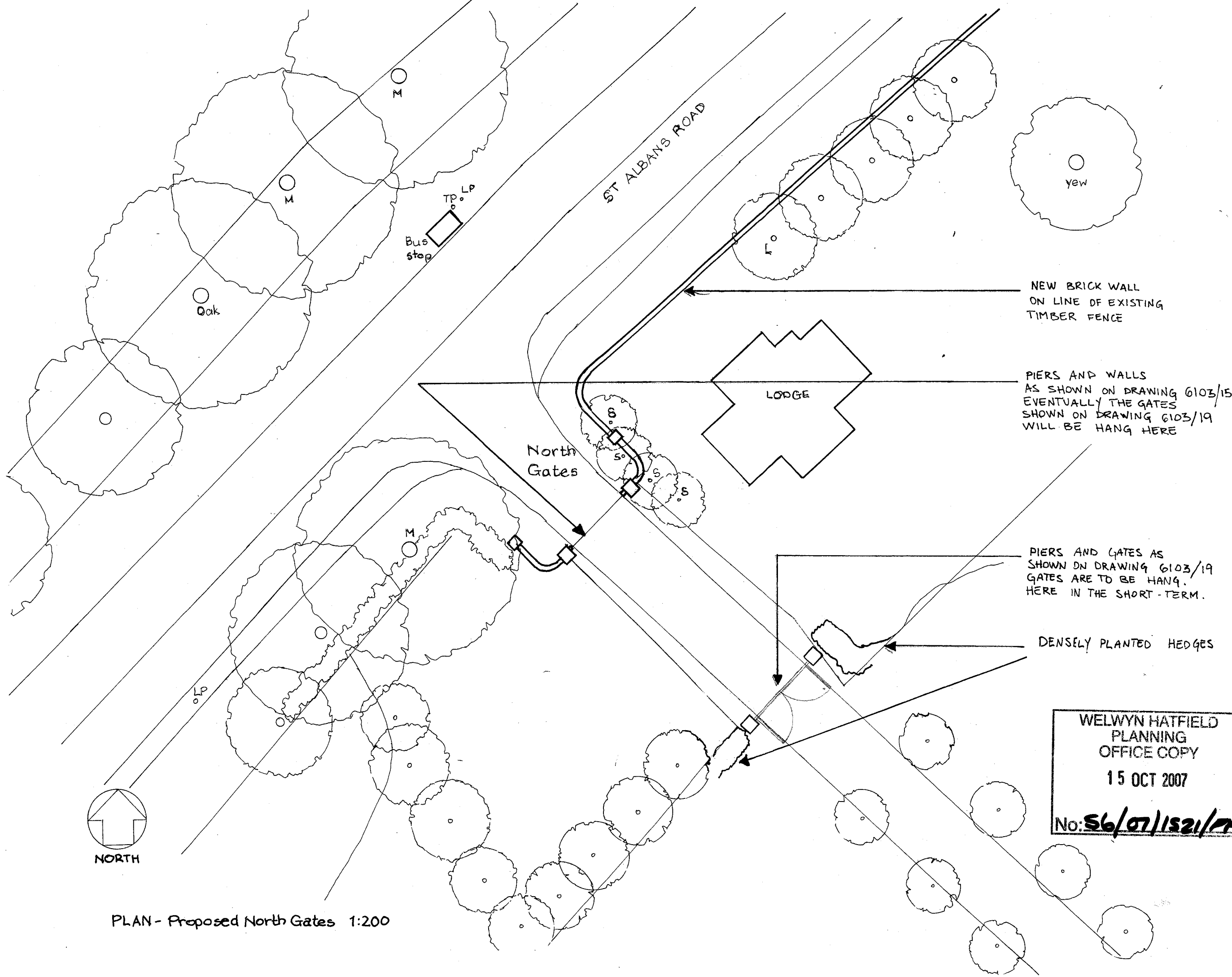
ELEVATION - Proposed North Gates 1:200

Rev B - 7/9/07 Gates set back

GREAT NAST HYDE HOUSE	PROPOSED NORTH GATES
Scale 1:200	Rev. B
Date Oct 2003	No. 6103/G/013
Drawn NRH	

WELWYN HATFIELD
PLANNING
OFFICE COPY
15 OCT 2007
No: *56/07/1521/FP*

RUSSELL TAYLOR ARCHITECTS
www.rtaarchitects.co.uk
 LONDON
 CORNWALL
 TEL: 020 7261 1984
 TEL: 01503 273 092
 © Russell Taylor Architects own the copyright of this drawing and design.



Rev C - 2/8/07 - Position of Gates Revised
 GREAT NAST HYDE HOUSE
 PLAN - PROPOSED NORTH GATES
 REV: A - GENERAL REVISIONS
 1:200 MAR 19 107 KHP 6103/G/14 C

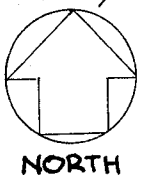
NEW BRICK WALL
 ON LINE OF EXISTING
 TIMBER FENCE

PIERS AND WALLS
 AS SHOWN ON DRAWING 6103/15
 EVENTUALLY THE GATES
 SHOWN ON DRAWING 6103/19
 WILL BE HANG HERE

PIERS AND GATES AS
 SHOWN ON DRAWING 6103/19
 GATES ARE TO BE HANG
 HERE IN THE SHORT-TERM.

DENSELY PLANTED HEDGES

WELWYN HATFIELD
 PLANNING
 OFFICE COPY
 15 OCT 2007
 No: 56/07/1521/PT

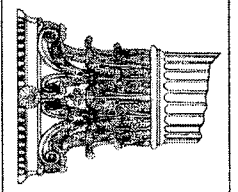


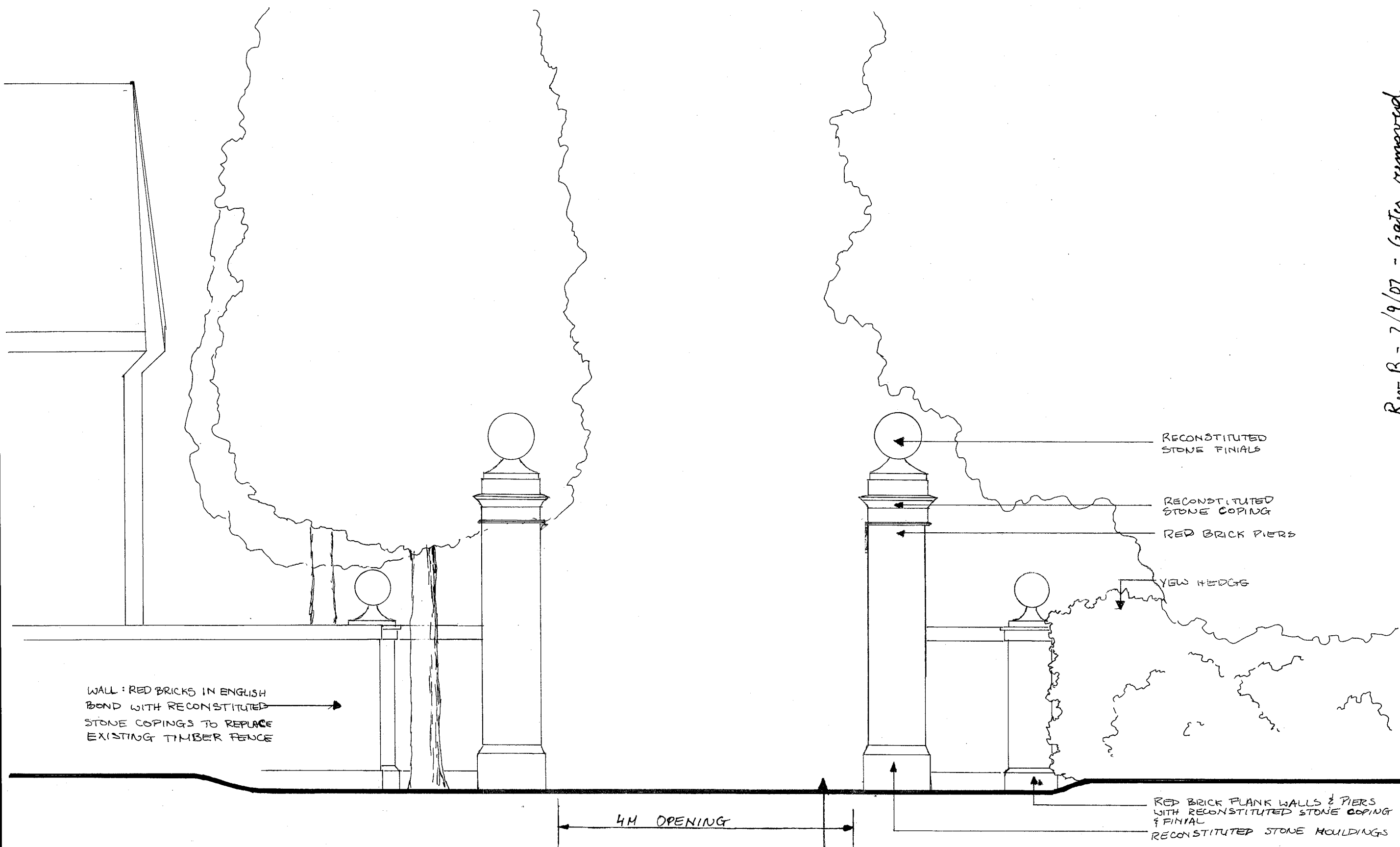
PLAN - Proposed North Gates 1:200

RUSSELL TAYLOR ARCHITECTS

www.rtaarchitects.co.uk
 TEL: 020 7261 1984
 TEL: 01503 273 092

mail@rtaarchitects.co.uk
 LONDON
 CORNWALL
 © Russell Taylor Architects own the copyright of this drawing and design.





WALL: RED BRICKS IN ENGLISH BOND WITH RECONSTITUTED STONE COPINGS TO REPLACE EXISTING TIMBER FENCE

4M OPENING

RECONSTITUTED STONE FINIALS
 RECONSTITUTED STONE COPING
 RED BRICK PIERS

YEW HEDGE

RED BRICK FLANK WALLS & PIERS WITH RECONSTITUTED STONE COPING & FINIAL
 RECONSTITUTED STONE MOLDINGS

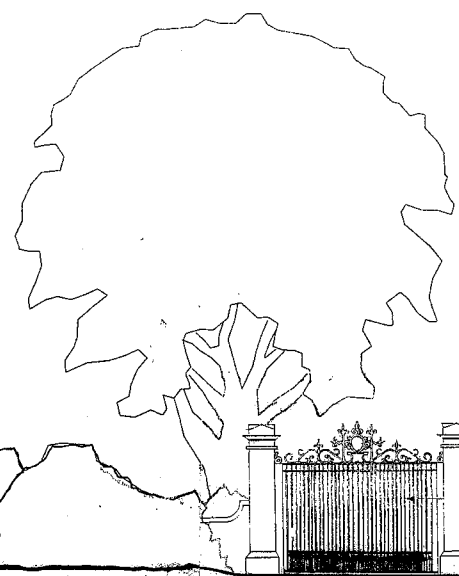
EVENTUALLY THE GATES SHOWN ON DRAWING 6103/19 WILL BE HUNG HERE

PROPOSED NORTH GATEWAY VIEW FACING ST. ALBANS ROAD.
 1:50

WELWYN HATFIELD
 PLANNING
 OFFICE COPY
 15 OCT 2007
 No: 56/07/1521/PA

Rev. B - 7/9/07 - Gates removed
 GREAT NAST HYDE HOUSE
 PROPOSED NORTH GATEWAY
 REV: A - GENERAL REVISIONS
 1:50, MAR 19 107, KWP, 6103/G/015 B

RUSSELL TAYLOR ARCHITECTS
 www.rtarchitects.co.uk
 TEL: 020 7261 1984
 TEL: 01503 273 092
 mail@rtarchitects.co.uk
 LONDON
 CORNWALL
 © Russell Taylor Architects own the copyright of this drawing and design.



Great Nast Hyde House

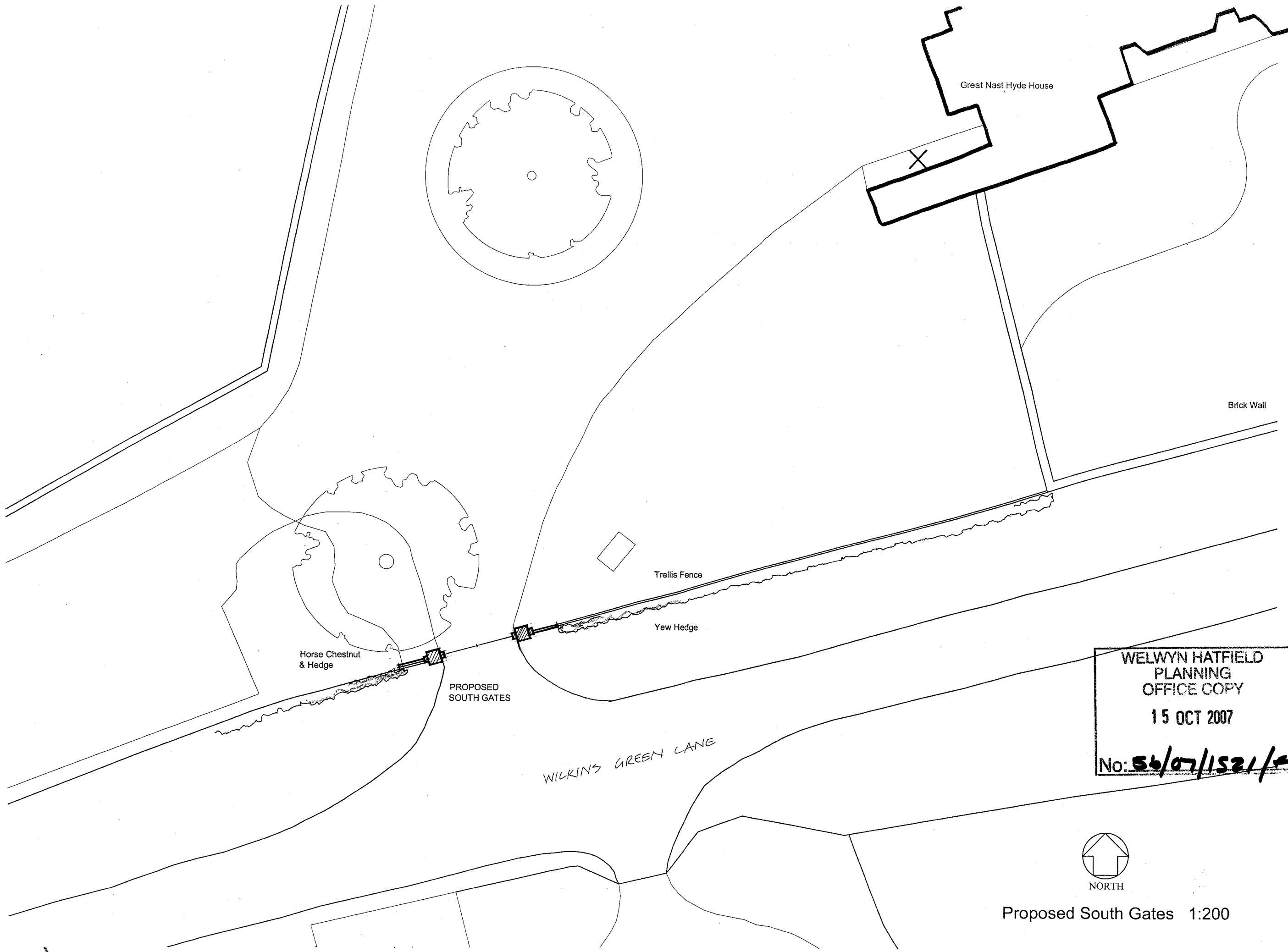
Brick Wall
& Beech

Proposed South Gates 1:200

WELWYN HATFIELD
 PLANNING
 OFFICE COPY
 15 OCT 2007
 No: **36/07/1521/FP**

GREAT NAST HYDE HOUSE PROPOSED SOUTH GATES
 Scale 1:200 Date 20.10.03 Drawn NRH No. 6103/G/016 Rev. B

RUSSELL TAYLOR ARCHITECTS
 www.rtaarchitects.co.uk
 TEL: 020 7261 1984
 TEL: 01503 273 092
 mail@rtaarchitects.co.uk
 LONDON
 CORNWALL
 © Russell Taylor Architects own the copyright of this drawing and design.



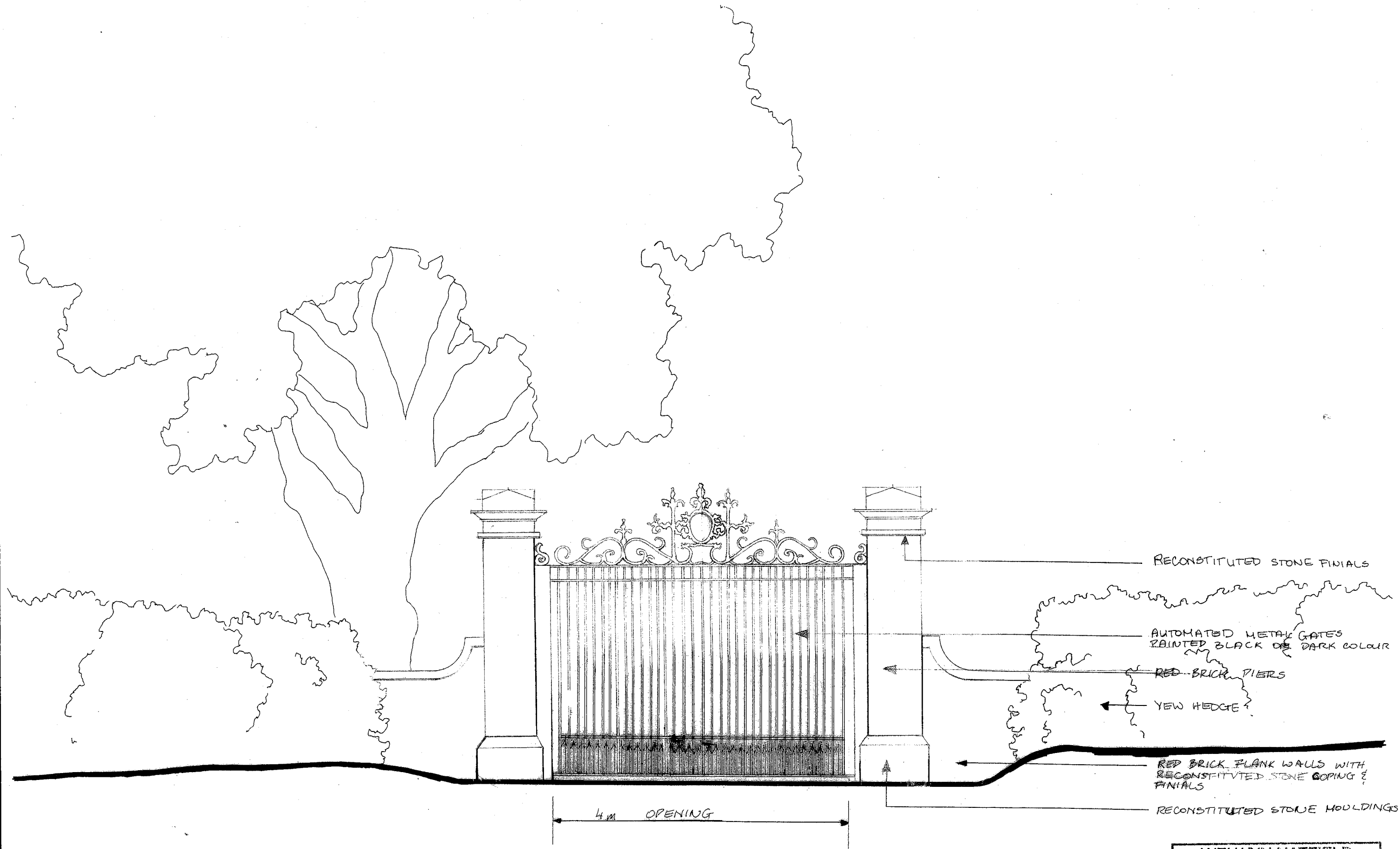
GREAT NAST HYDE HOUSE PROPOSED SOUTH GATES
 PLAN
 Scale 1:200 Date 20.10.03 Drawn NRH No. 6103/4/017 Rev. -

WELWYN HATFIELD
 PLANNING
 OFFICE COPY
 15 OCT 2007
 No: 56/07/1521/00



Proposed South Gates 1:200

RUSSELL TAYLOR ARCHITECTS
 www.rtarclhitects.co.uk
 TEL:020 7261 1984
 TEL:01503 273 092
 mail@rtarclhitects.co.uk
 LONDON
 CORNWALL
 © Russell Taylor Architects own the copyright of this drawing and design.



- RECONSTITUTED STONE FINIALS
- AUTOMATED METAL GATES PAINTED BLACK OR DARK COLOUR
- RED BRICK PIERS
- YEW HEDGE
- RED BRICK FLANK WALLS WITH RECONSTITUTED STONE COPING & FINIALS
- RECONSTITUTED STONE MOLDINGS

4m OPENING

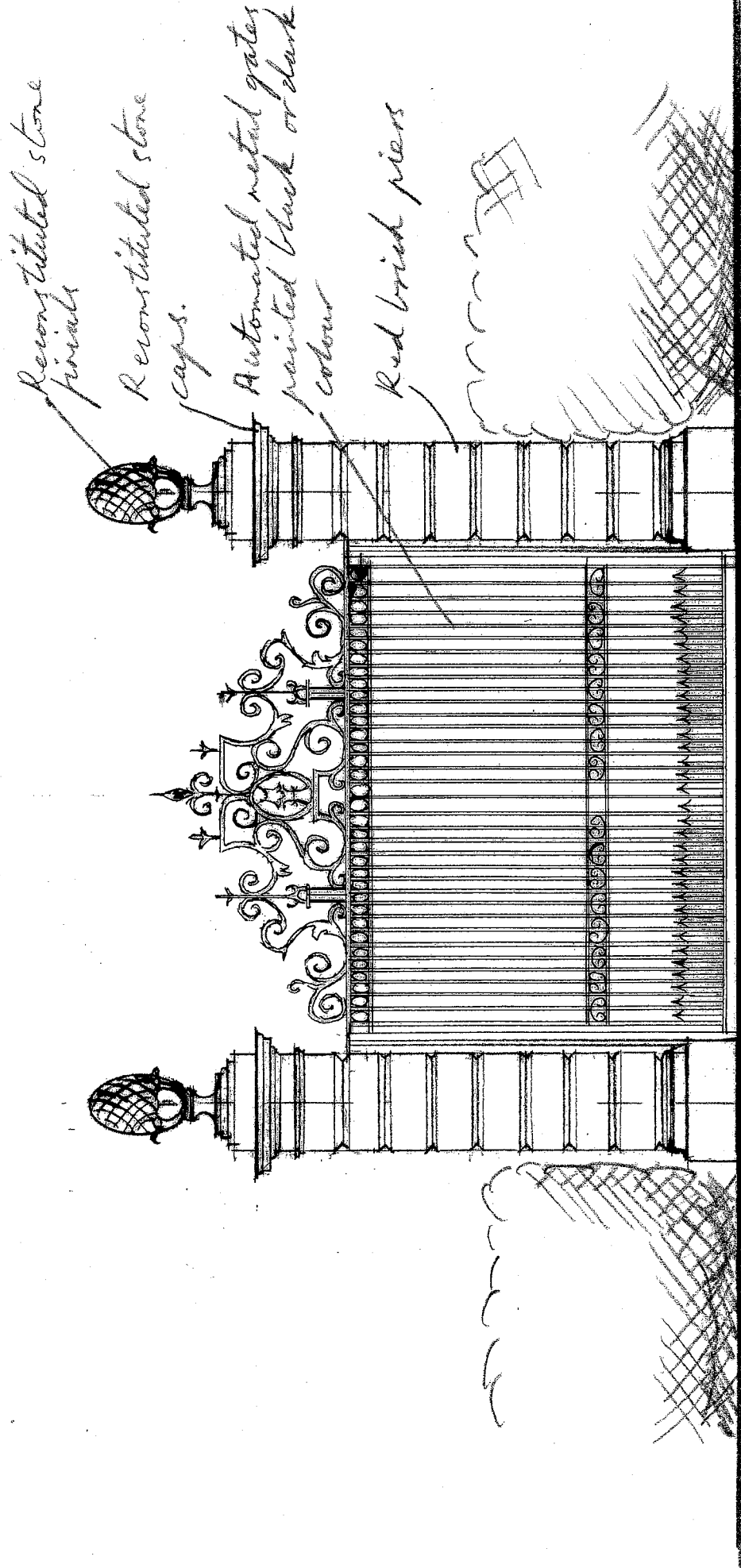
WELWYN HATFIELD
 PLANNING
 OFFICE COPY
 15 OCT 2007
 No: 56/07/1521/FP

PROPOSED SOUTH GATES VIEW FROM WILKINS GREEN LANE
 1:50

GREAT NAST HYDE HOUSE
 PROPOSED SOUTH GATES
 REV: A + GENERAL REVISIONS
 1:50, MAR 10/07, KWP, 6103/G/018 B

RUSSELL TAYLOR ARCHITECTS
 www.rtar architects.co.uk
 TEL: 020 7261 1984
 TEL: 01503 273 092

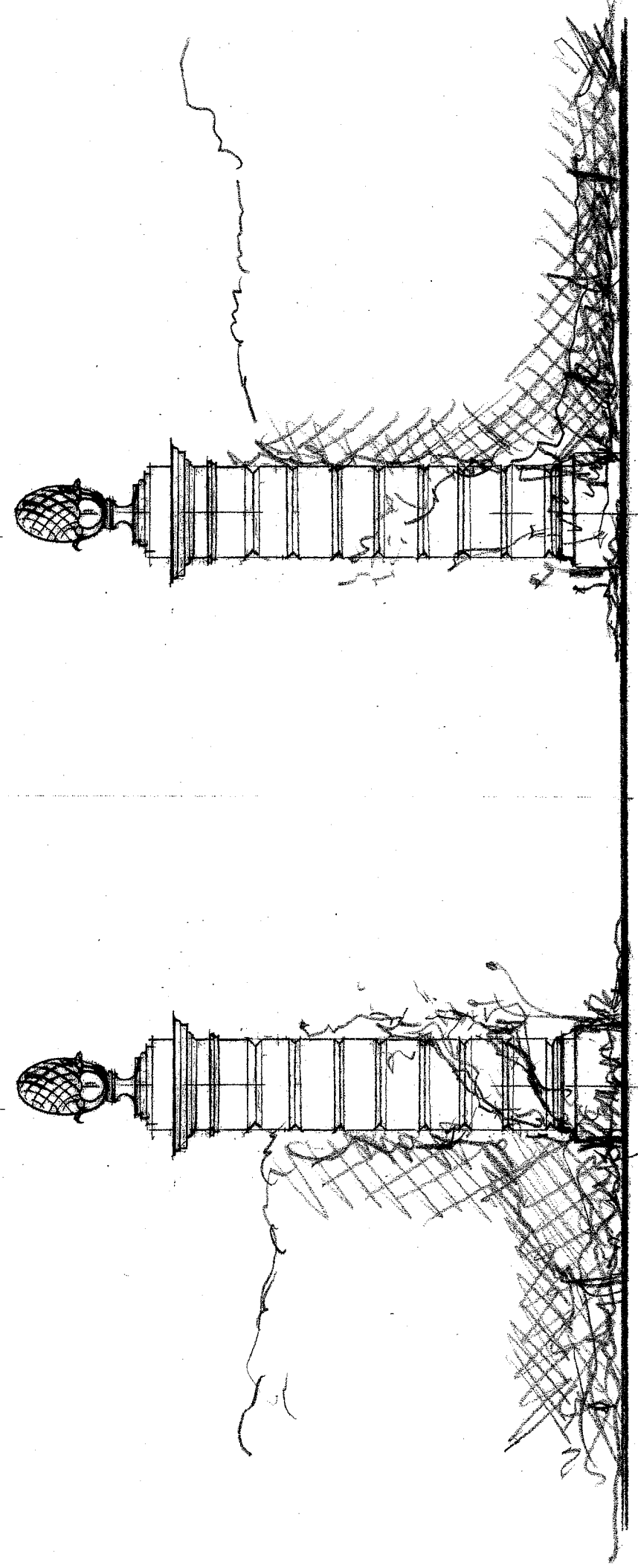
mail@rtarchitects.co.uk
 LONDON
 CORNWALL
 © Russell Taylor Architects own the copyright of this drawing and design.



Elevation of Inner Gateway
With Gates Hung on Piers

The Gates will be hung here until they can be hung on the outer Piers.

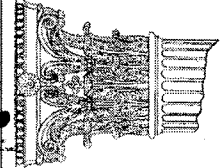
Densely planted hedges (yew)



Elevation of Inner Gateway
With Gates Removed.

The eventual state. The piers become ornamental incidents in the landscape.

WELWYN HATFIELD
 PLANNING
 OFFICE COPY
 15 OCT 2007
 No: **S6/07/1521/FP**



RUSSELL TAYLOR ARCHITECTS

mail@rtarchitects.co.uk
 LONDON
 CORNWALL
 www.rtarchitects.co.uk
 TEL: 020 7261 1984
 TEL: 01503 273 092

Great West Hyde House 6103/19
 1:50. RT 7/9/07.

© Russell Taylor Architects own the copyright of this drawing and design.