

Horse Chestnut & Hedge

Brick piers & Trellis Fence

Great Nast Hyde House

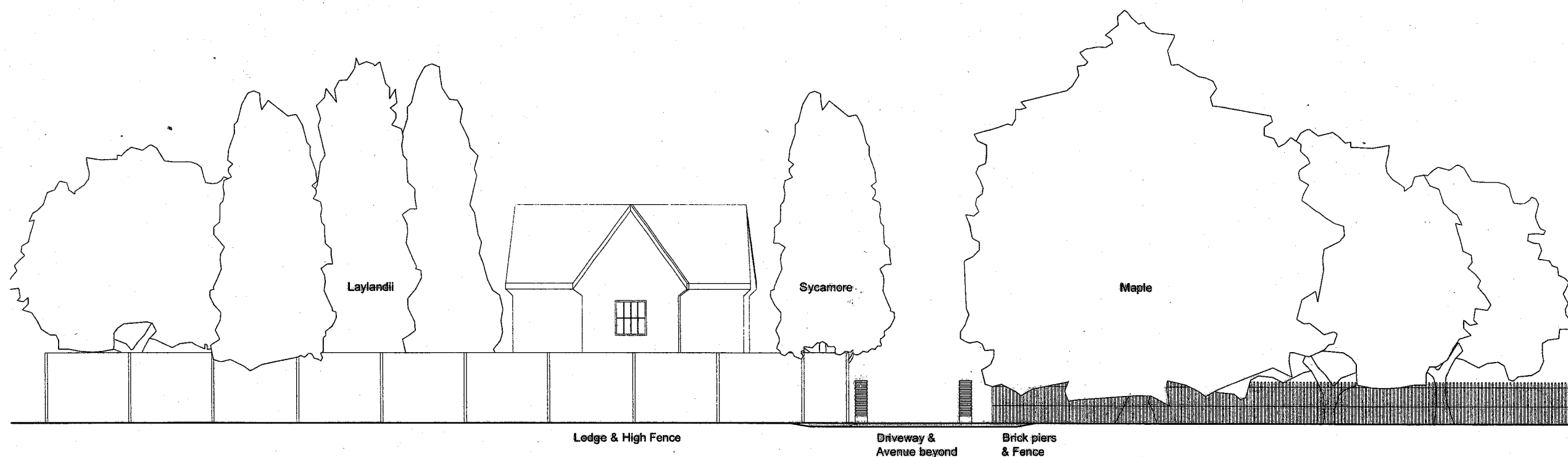
Brick Wall & Beech

Existing South Gates 1:200

WELWYN HATFIELD  
PLANNING  
OFFICE COPY  
19 APR 2007  
No: S6/2007/625/LB

GREAT NAST HYDE HOUSE      EXISTING SOUTH GATES  
Scale 1:200      Date 20.10.03      Drawn NRH      No. 60316/006      Rev. f

**RUSSELL TAYLOR ARCHITECTS**  
www.rtarclhitects.co.uk  
TEL:020 7261 1984  
TEL:01503 273 092  
mail@rtarchitects.co.uk  
LONDON  
CORNWALL  
© Russell Taylor Architects over the copyright of this drawing and design.

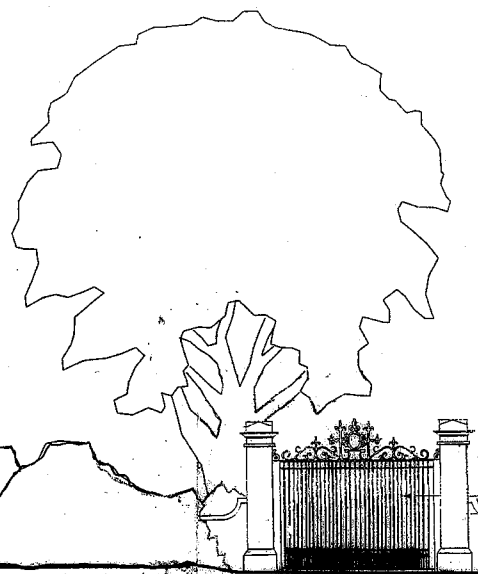


WELWYN HATFIELD  
 PLANNING  
 OFFICE COPY  
 19 APR 2007  
 No: Sk/2007/625/LB

Existing North Gates 1:200

**GREAT NAST HYDE HOUSE**    **EXISTING NORTH GATES**  
 Scale 1:200    Date Oct 2003    Drawn NRH    No. 6105/6/004    Rev. -

**RUSSELL TAYLOR ARCHITECTS**  
 www.rtarctics.co.uk  
 TEL:020 7261 1984  
 TEL:01503 273 092  
 mail@rtarctics.co.uk  
 LONDON  
 CORNWALL  
 © Russell Taylor Architects own the copyright of this drawing and design.



Great Nast Hyde House

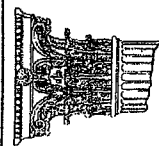
Brick Wall & Beech

WELWYN HATFIELD  
PLANNING  
OFFICE COPY  
19 APR 2007  
No: Sk/2007/625/UB

Proposed South Gates 1:200

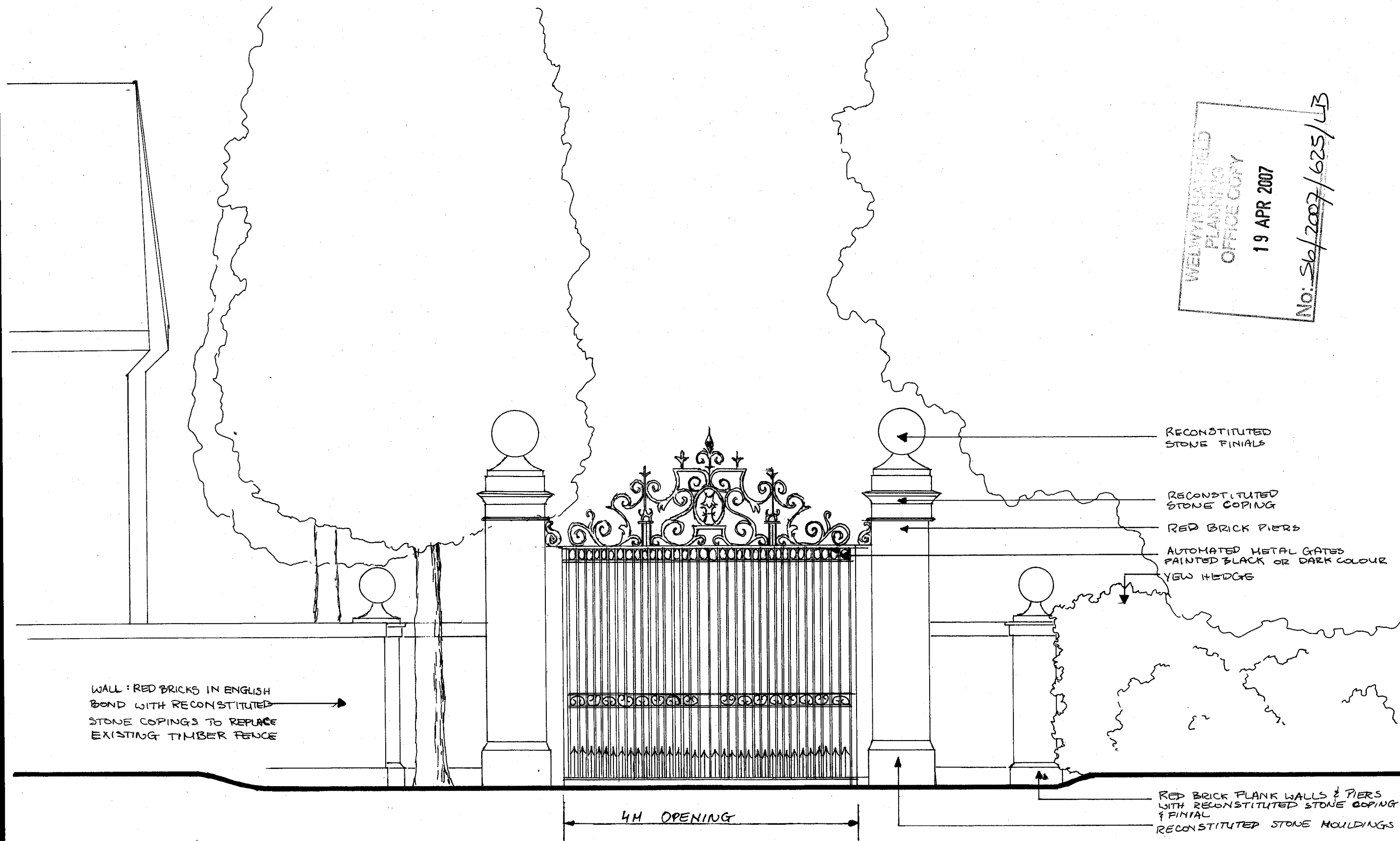
**GREAT NAST HYDE HOUSE**      **PROPOSED SOUTH GATES**

Scale	Date	Drawn	No.	Rev.
1:200	20.10.03	NRH	61034/016	B



**RUSSELL TAYLOR ARCHITECTS**  
[www.rtarchitects.co.uk](http://www.rtarchitects.co.uk)  
[mail@rtarchitects.co.uk](mailto:mail@rtarchitects.co.uk)  
 LONDON  
 CORNWALL  
 © Russell Taylor Architects own the copyright of this drawing and design.

TEL: 020 7261 1984  
 TEL: 01503 273 092



WALL: RED BRICKS IN ENGLISH BOND WITH RECONSTITUTED STONE COPINGS TO REPLACE EXISTING TIMBER FENCE

4M OPENING

- RECONSTITUTED STONE FINIALS
- RECONSTITUTED STONE COPING
- RED BRICK PIERS
- AUTOMATED METAL GATES PAINTED BLACK OR DARK COLOUR
- VIEW HEDGE

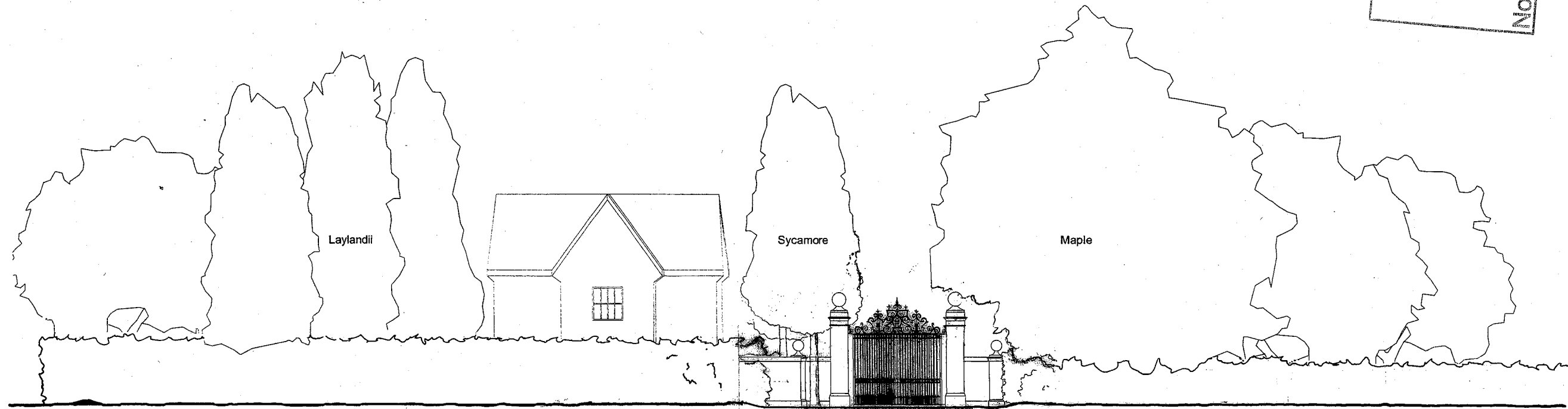
RED BRICK FLANK WALLS & PIERS WITH RECONSTITUTED STONE COPING & FINIAL  
RECONSTITUTED STONE MOLDINGS

WELWYN HATFIELD  
PLANNING  
OFFICE COPY  
19 APR 2007  
No: Sk/2007/625/LB

PROPOSED NORTH GATES VIEW FACING ST. ALBANS ROAD.  
1:50

GREAT NAST HYDE HOUSE  
PROPOSED NORTH GATES  
REV: A - GENERAL REVISIONS  
1:50, MAR 19 107, KWP, 6103/G/015 A

**RUSSELL TAYLOR ARCHITECTS**  
[www.rtarchitects.co.uk](http://www.rtarchitects.co.uk)  
[mail@rtarchitects.co.uk](mailto:mail@rtarchitects.co.uk)  
 LONDON  
 CORNWALL  
 © Russell Taylor Architects own the copyright of this drawing and design.  
 TEL: 020 7261 1984  
 TEL: 01503 273 092

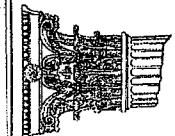


WELWYN HATFIELD  
 PLANNING  
 OFFICE COPY  
 19 APR 2007  
 No: 56/2007/625/UB

ELEVATION - Proposed North Gates 1:200

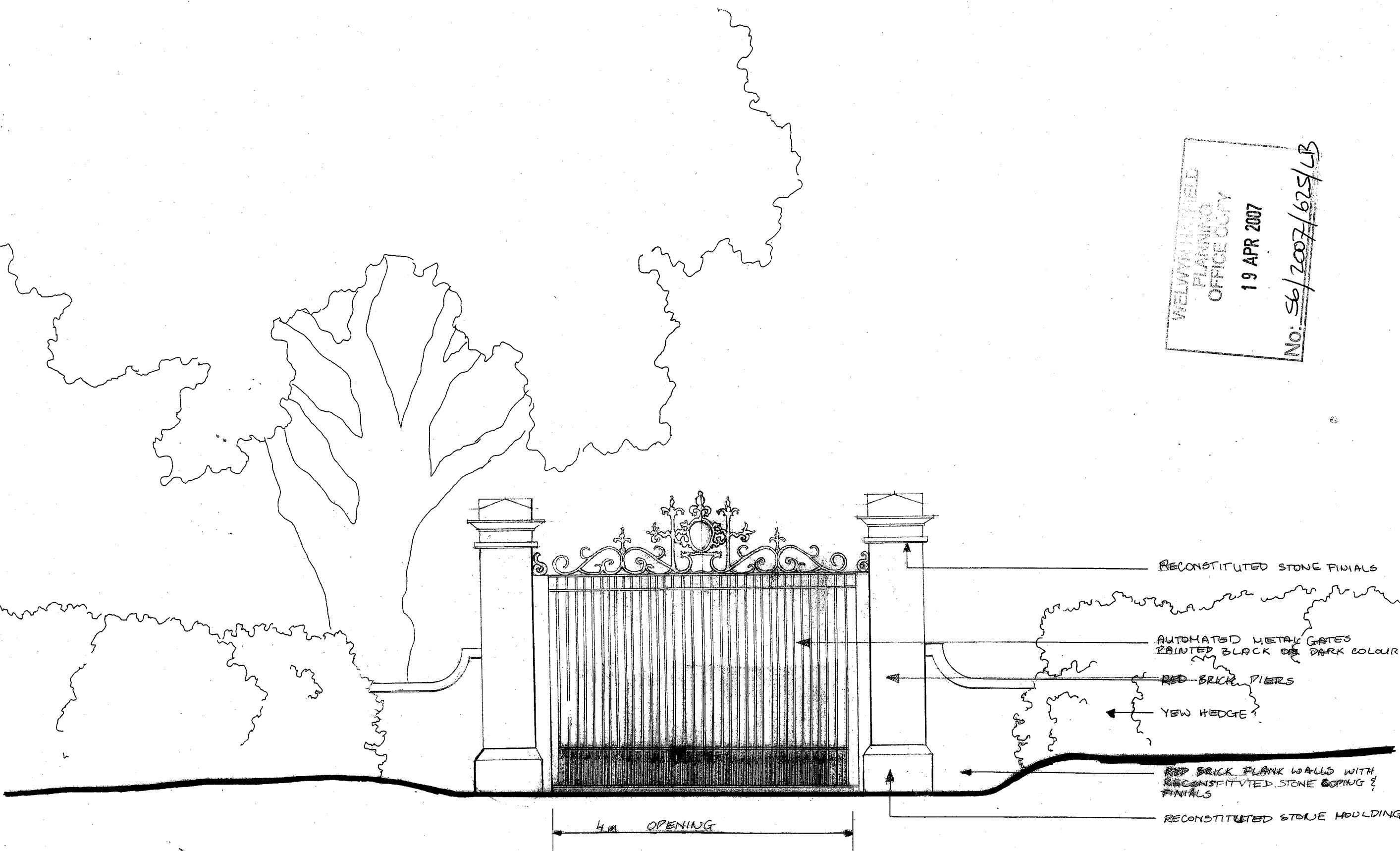
GREAT NAST HYDE HOUSE PROPOSED NORTH GATES  
 Scale 1:200 Date Oct 2003 Drawn NRH No. 6103/G/013 Rev. A

**RUSSELL TAYLOR ARCHITECTS**  
 www.rtaarchitects.co.uk  
 TEL: 020 7261 1984  
 TEL: 01503 273 092  
 mail@rtaarchitects.co.uk  
 LONDON  
 CORNWALL  
 © Russell Taylor Architects own the copyright of this drawing and design.



WELWYN HILLS  
 PLANNING  
 OFFICE COPY  
 19 APR 2007  
 No: S6/2007/625/LB

GREAT NAST HYDE HOUSE  
 PROPOSED SOUTH GATES  
 REV: A - GENERAL REVISIONS  
 1:50. MAR 19/07. KWP. 6103/G/018 B



PROPOSED SOUTH GATES VIEW FROM WILKINS GREEN LANE  
 1:50

**RUSSELL TAYLOR ARCHITECTS**  
 www.rtarchitects.co.uk  
 TEL: 020 7261 1984  
 TEL: 01503 273 092  
 mail@rtarchitects.co.uk  
 LONDON  
 CORNWALL  
 © Russell Taylor Architects own the copyright of this drawing and design.

