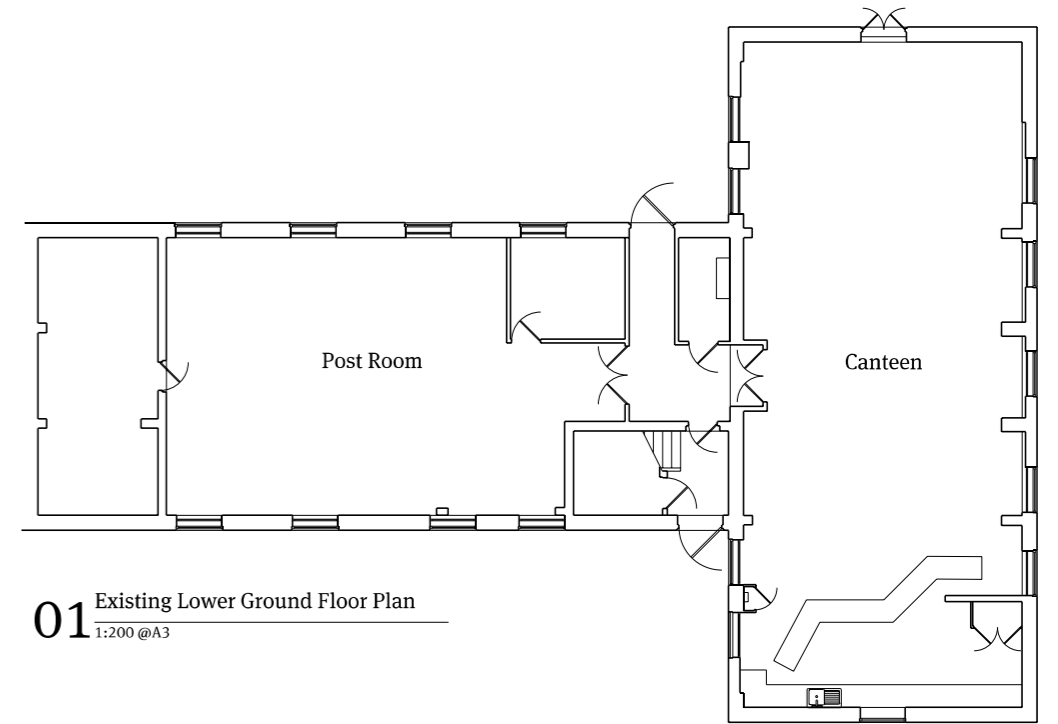


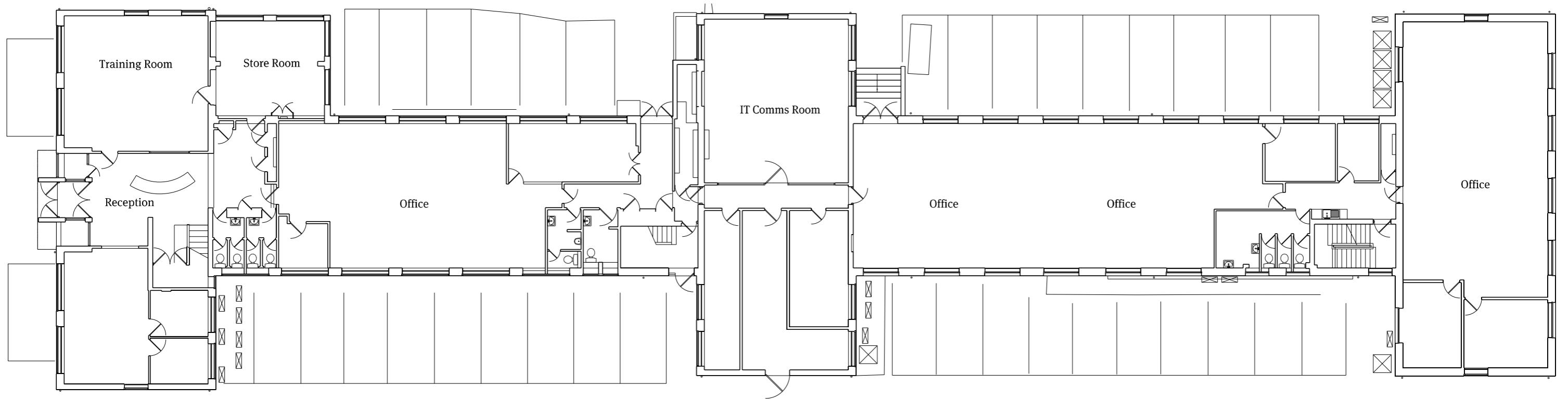


00 Site Location Plan
1:1250@A3





01 Existing Lower Ground Floor Plan
1:200 @A3



02 Existing Ground Floor Plan
1:200 @A3

PAPA
Papa Architects Ltd.
222 Archway Road, Highgate,
London N6 5AX
Phone. +44(0)20 8348 8411
Fax. +44 (0)20 8348 7411
www.papaarchitects.co.uk

Client

Address
Everest House, Sopers Road,
Cuffley, Potters Bar, EN6 4SG

Drawing title
Existing Lower Ground
and Ground Floor Plan

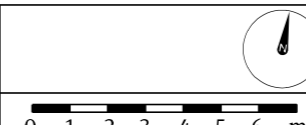
Project No. Date
2011 April 20

Scale
1:200@A3

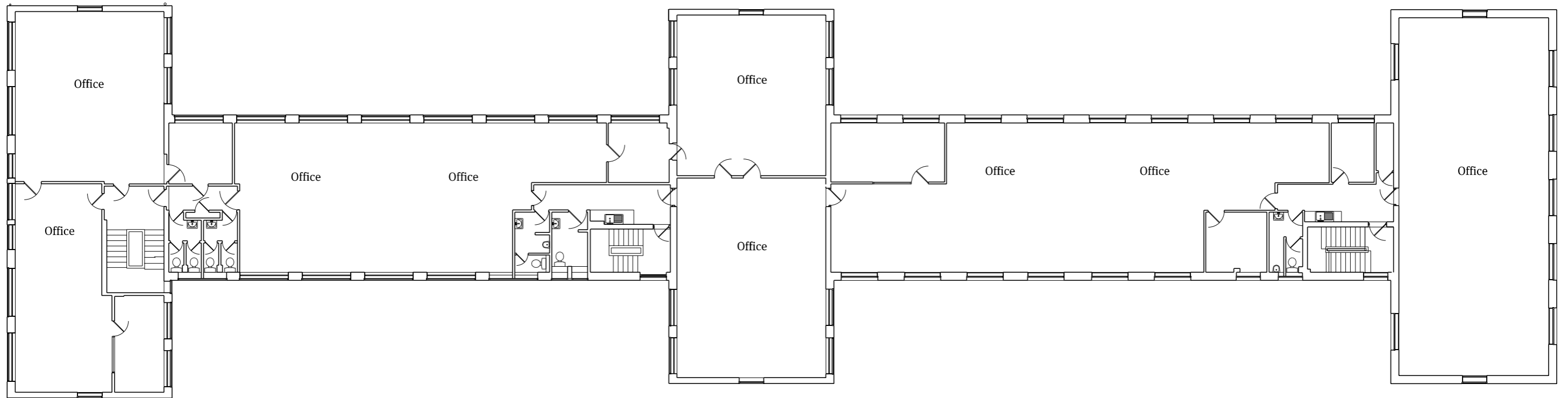
Drawing No.
90 201

Current Rev
P01

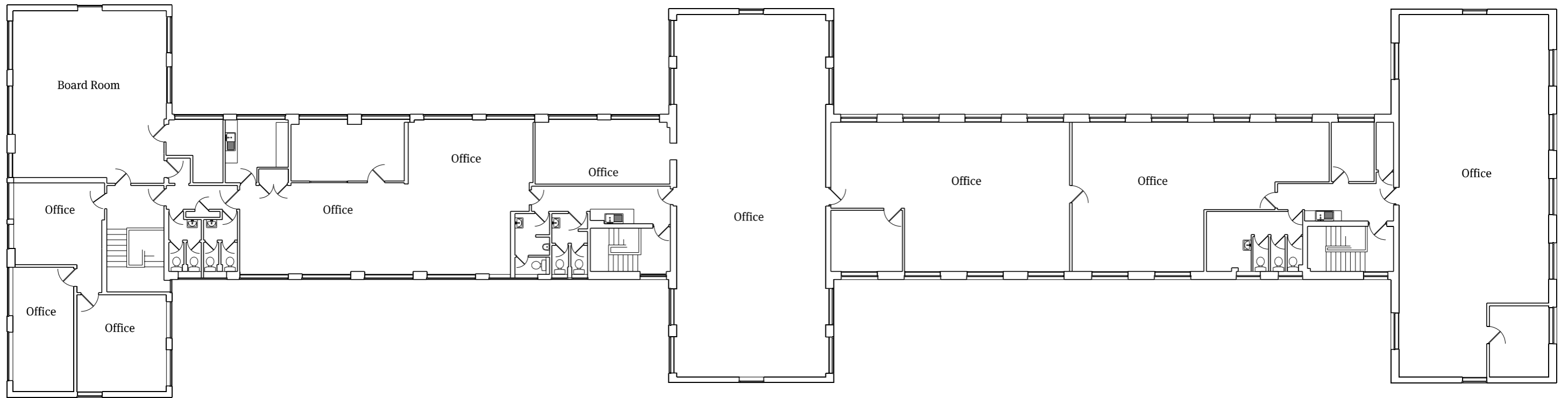
Rev	Date	Reason For Issue	Chk



Notes
All dimensions must be checked and Papa Architects are to be informed of any discrepancies prior to construction. Any DWG's issued by PAPA architects are to be read in conjunction with the associated PDF versions. This drawing and any of the details therein remain the copyright of Papa Architects Ltd. All drawings prepared by Papa Architects are not to be used for any submissions, area schedule calculations or used by any other Persons or Companies other than Papa Architects Ltd unless written consent has been given by Papa Architects Ltd.

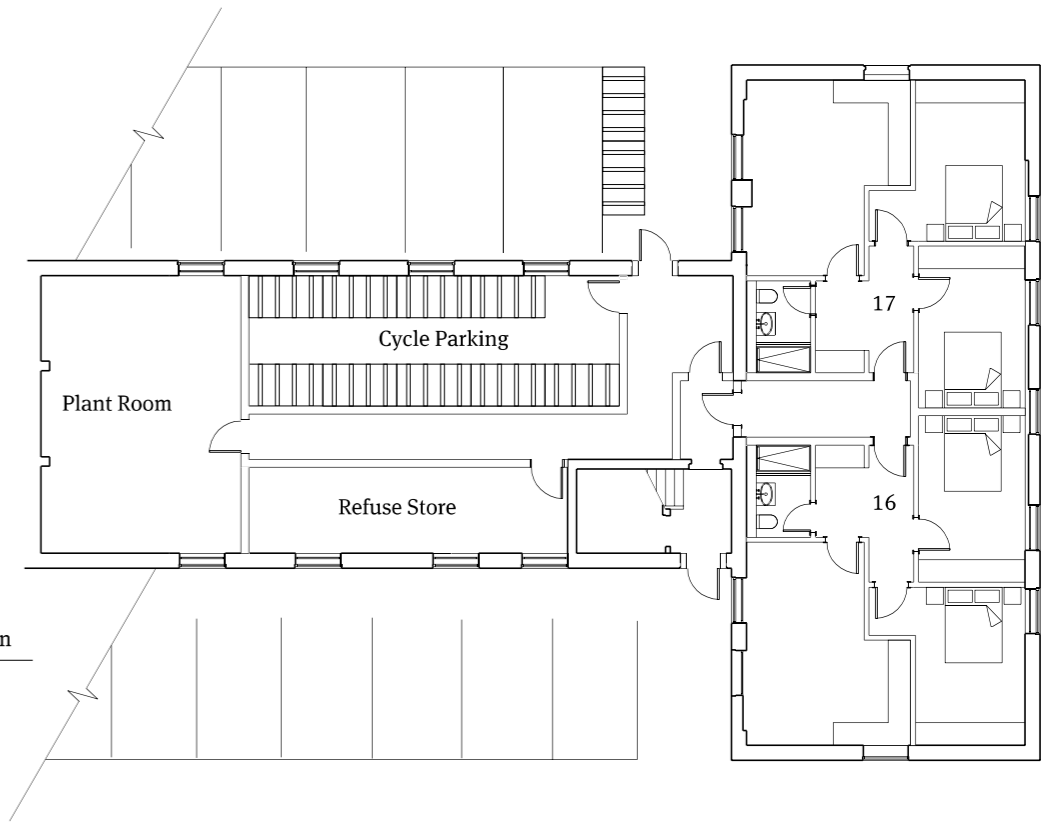


03 Existing First Floor Plan
1:200 @A3

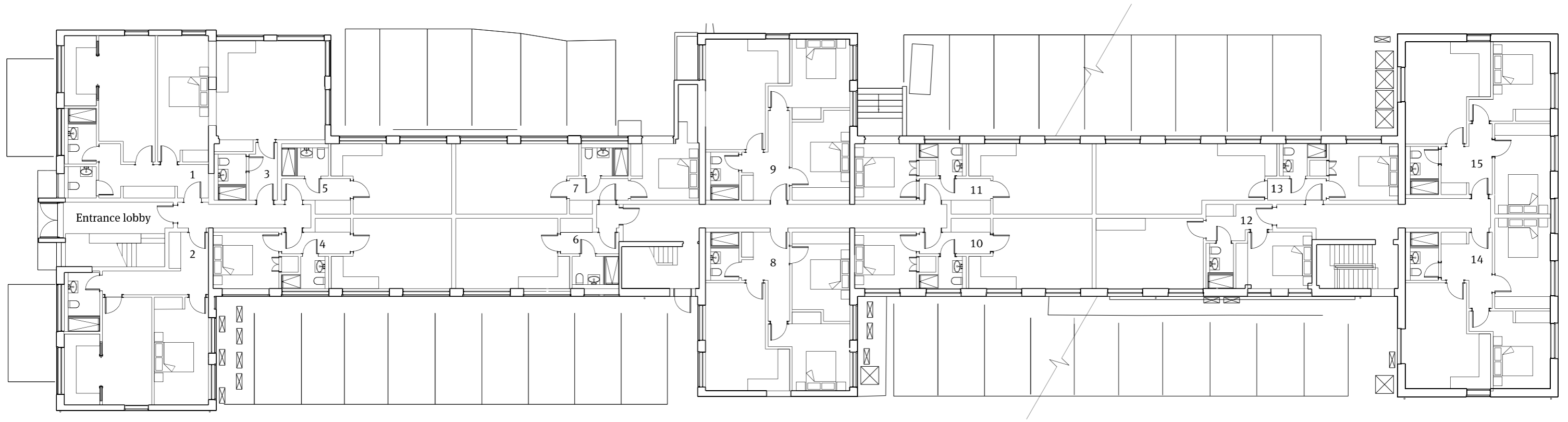


04 Existing Second Floor Plan
1:200 @A3





01 Proposed Lower Ground Floor Plan
1:200 @A3



02 Proposed Ground Floor Plan
1:200 @A3

PAPA
Papa Architects Ltd.
222 Archway Road, Highgate,
London N6 5AX
Phone. +44(0)20 8348 8411
Fax. +44 (0)20 8348 7411
www.papaarchitects.co.uk

Client

Address
Everest House, Sopers Road,
Cuffley, Potters Bar, EN6 4SG

Drawing title
Proposed Lower Ground
and Ground Floor Plan

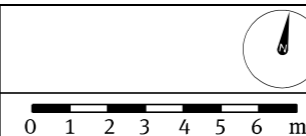
Project No. Date
2011 April 20

Scale
1:200@A3

Drawing No.
00 201

Current Rev
P01

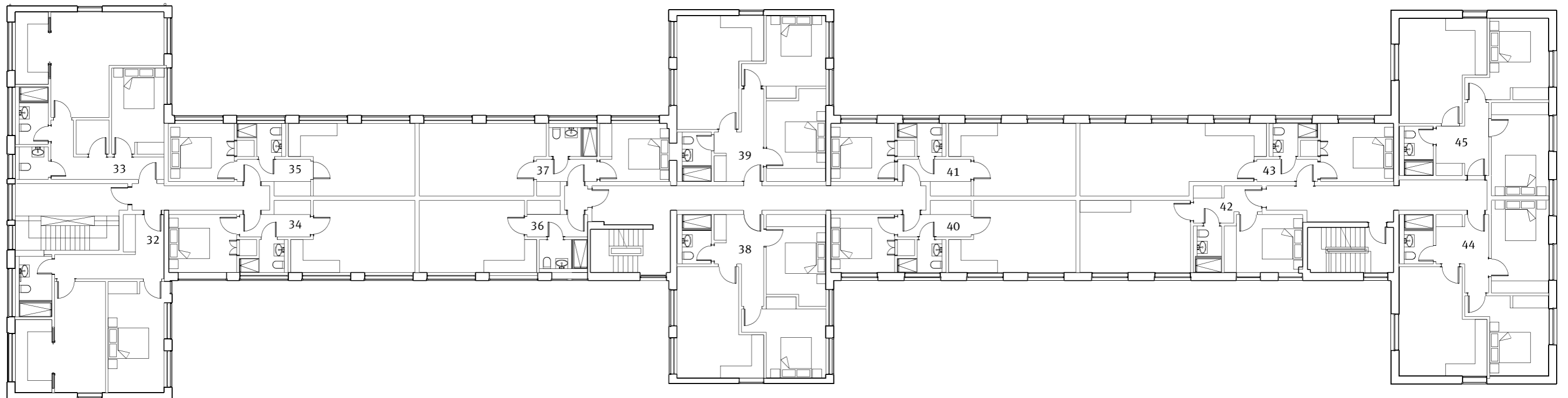
Rev	Date	Reason For Issue	Chk



Notes
All dimensions must be checked and Papa Architects are to be informed of any discrepancies prior to construction. Any DWG's issued by PAPA architects are to be read in conjunction with the associated PDF versions. This drawing and any of the details therein remain the copyright of Papa Architects Ltd. All drawings prepared by Papa Architects are not to be used for any submissions, area schedule calculations or used by any other Persons or Companies other than Papa Architects Ltd unless written consent has been given by Papa Architects Ltd.



03 Proposed First Floor Plan
1:200 @A3



04 Proposed Second Floor Plan
1:200 @A3

PAPA
Papa Architects Ltd.
222 Archway Road, Highgate,
London N6 5AX
Phone. +44(0)20 8348 8411
Fax. +44 (0)20 8348 7411
www.papaarchitects.co.uk

Client

Address
Everest House, Sopers Road,
Cuffley, Potters Bar, EN6 4SG

Drawing title
Proposed First
and Second Floor Plan

Project No. Date
2011 April 20

Scale
1:200@A3

Drawing No.
00 202

Current Rev
P01

Rev	Date	Reason For Issue	Chk

0 1 2 3 4 5 6 m



Notes
All dimensions must be checked and Papa Architects are to be informed of any discrepancies prior to construction. Any DWG's issued by PAPA architects are to be read in conjunction with the associated PDF versions. This drawing and any of the details therein remain the copyright of Papa Architects Ltd. All drawings prepared by Papa Architects are not to be used for any submissions, area schedule calculations or used by any other Persons or Companies other than Papa Architects Ltd unless written consent has been given by Papa Architects Ltd.