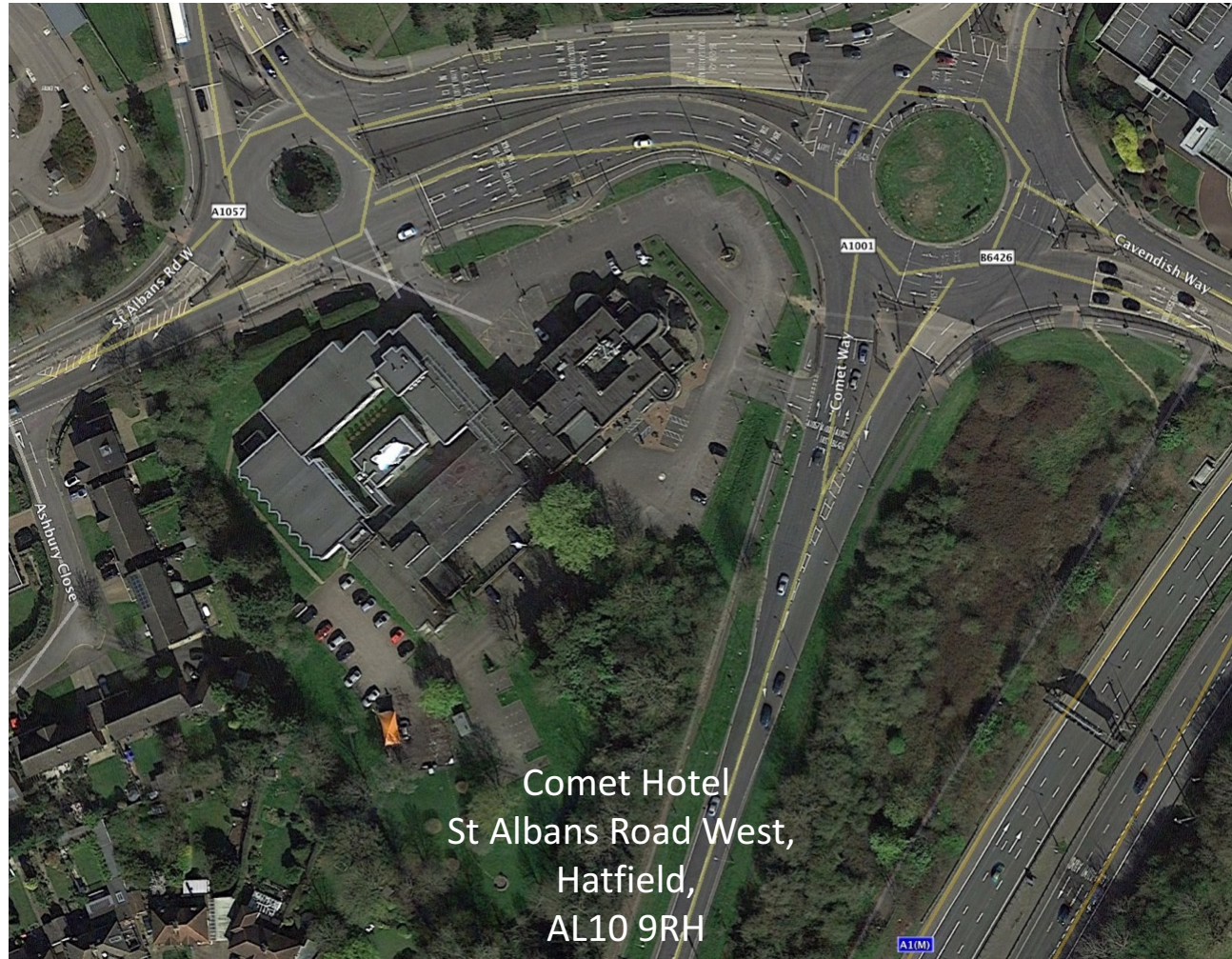
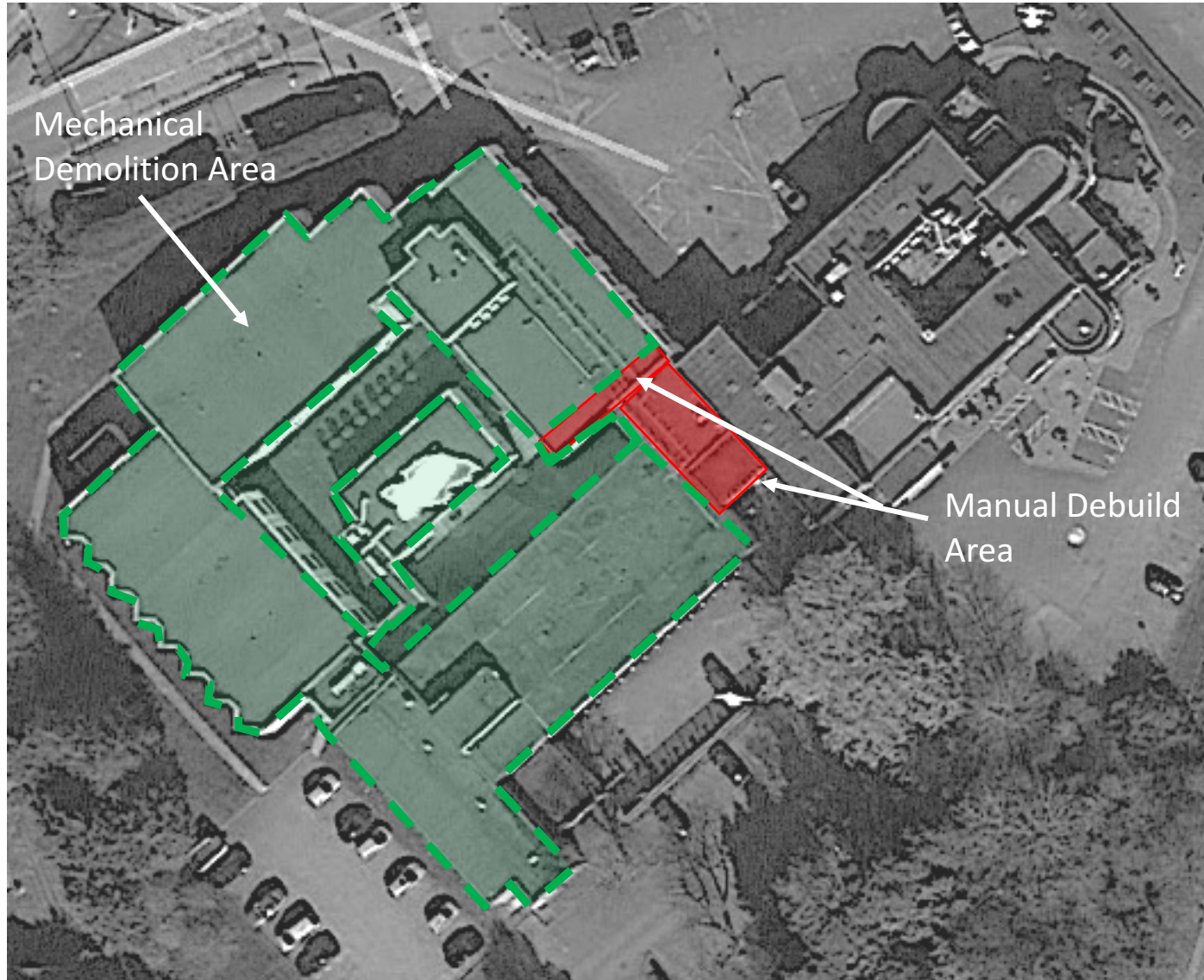


Enabling Works Methodology Overview



Working With



Methodology

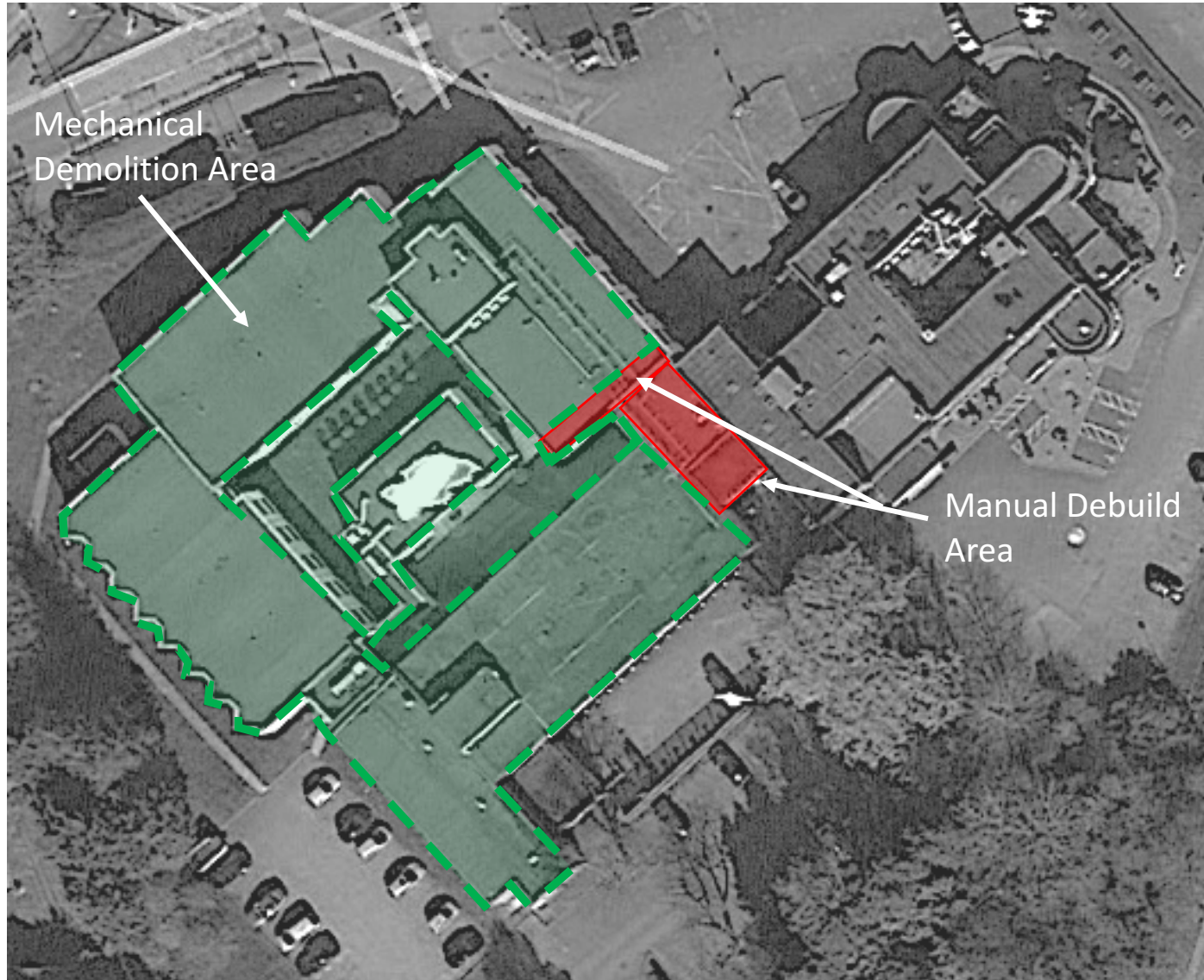
Manual Debuild Area:

- Area to be carefully stripped back to structure.
- Install designed temporary works.
- Install protection to structure to be retained.
- Roof to be manually deconstructed to debuild area.
- Blucon Diamond Cutting division operatives to form cut lines, at marked distance from retained structure, gradually, whilst Blucon Demolition division operative carefully dismantle structure elements, bay by bay.
- Arising's segregated and cleared as produced.
- Once structure is to ground slab level, cut line to be formed in ground slab 1m from retained structure, with additional cut out for lifting point.
- Using MEWP access, cutting team to trim where walls and slab join retained structure.
- Slab then to be lifted, and folded back away from retained structure.

Methodology

Separation Cuts:

- Areas to be fully stripped back to structure.
- Methodology, and, propping design to be finalised, and approved, prior to commencing these works
- Install protection to structure to be retained.
- Structure to be gradually reduced using diamond cutting equipment, and, multi shears with concrete/brick attachments fitted. (Please see photograph) Arising's to removed from works area and stockpiled for processing in agreed location.
- Addition cut lines, with lifting voids to be formed within 1-2m of structure to be retained
- 0.5m – 0.8mm of structure to be retained, during initial deconstruction. This will be trimmed to leave no residual elements of the structure to be demolished on the retained structure.
- Localised dust suppression to be used in addition to continuous water feed to diamond cutting equipment. Operatives to use wet vaccums throughout to ensure area remains dry.



Protection And Supports Information

- Install protection to structure to be retained. Aperture to have timber frame, please see detail sketch.
- Scaffold working deck to be erected below First Floor soffit.
- Designed propping to be installed.
- Both to be removed, once high level works are complete and signed off as complete.

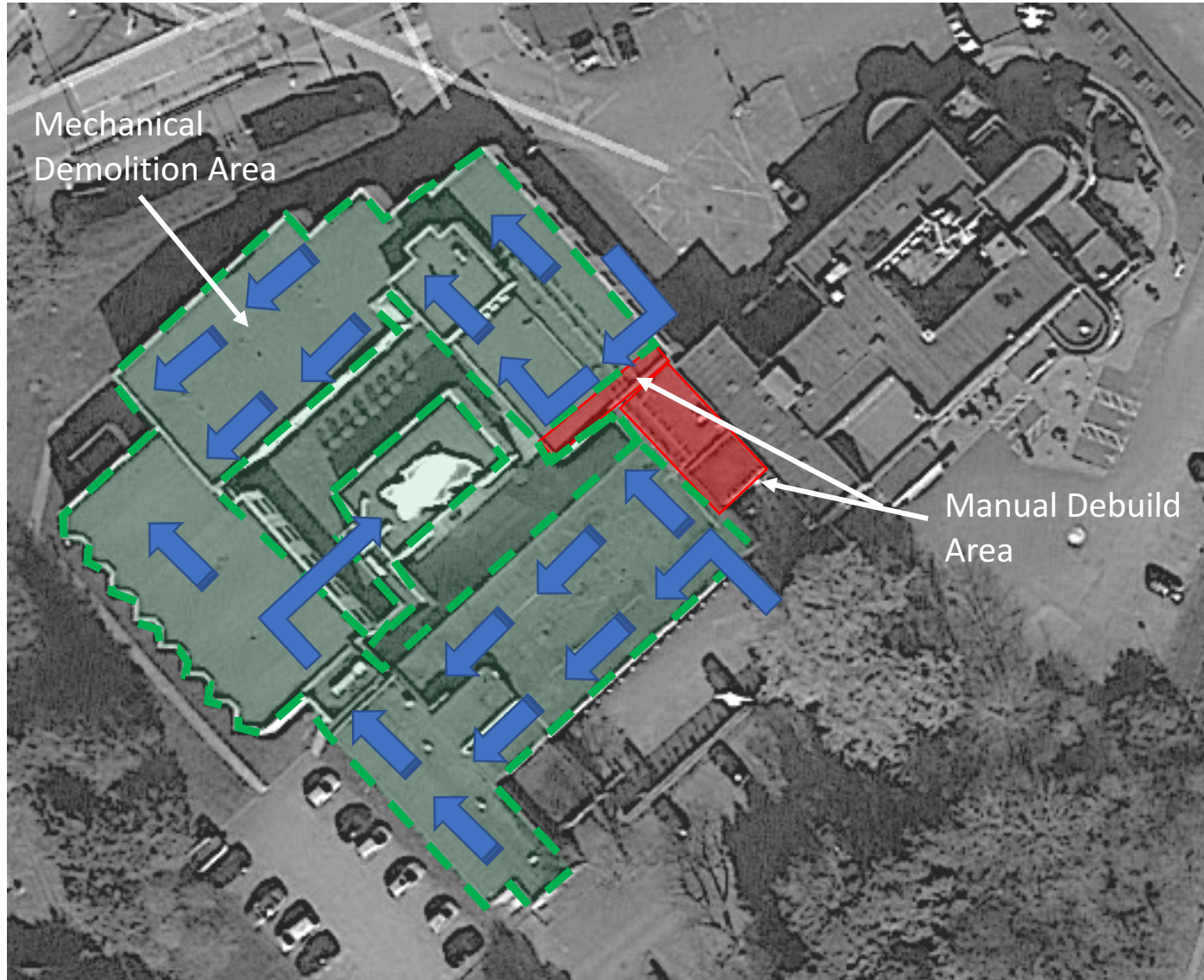
Multi Shear:



Methodology








Mechanical Demolition Area:

- Areas to be fully stripped back to structure.
- Install protection to structure to be retained.
- Banksman to have radio contact with D-Rig operators (demolition specification excavators)
- Demolition sequence to commence where separation areas have been formed. (Please see directional arrows) This allows demolition of structure to be directed away from retained structure.
- Arising's segregated and cleared as produced, by secondary D-Rigs
- Arising's to be removed from works area and stockpiled for processing in agreed location.
- Addition cut lines, with lifting voids to be formed within 1-2m of structure to be retained



Proposed Site Logistics Plan

Key:

-  Site boundary
-  Welfare area
-  Site parking
-  Pedestrian route
-  Site bellmouth's
-  Site traffic
-  Works areas
-  Arising processing areas
-  Wagon turning area

*Please note, demolition areas fencing and hearing zones not shown for clarity



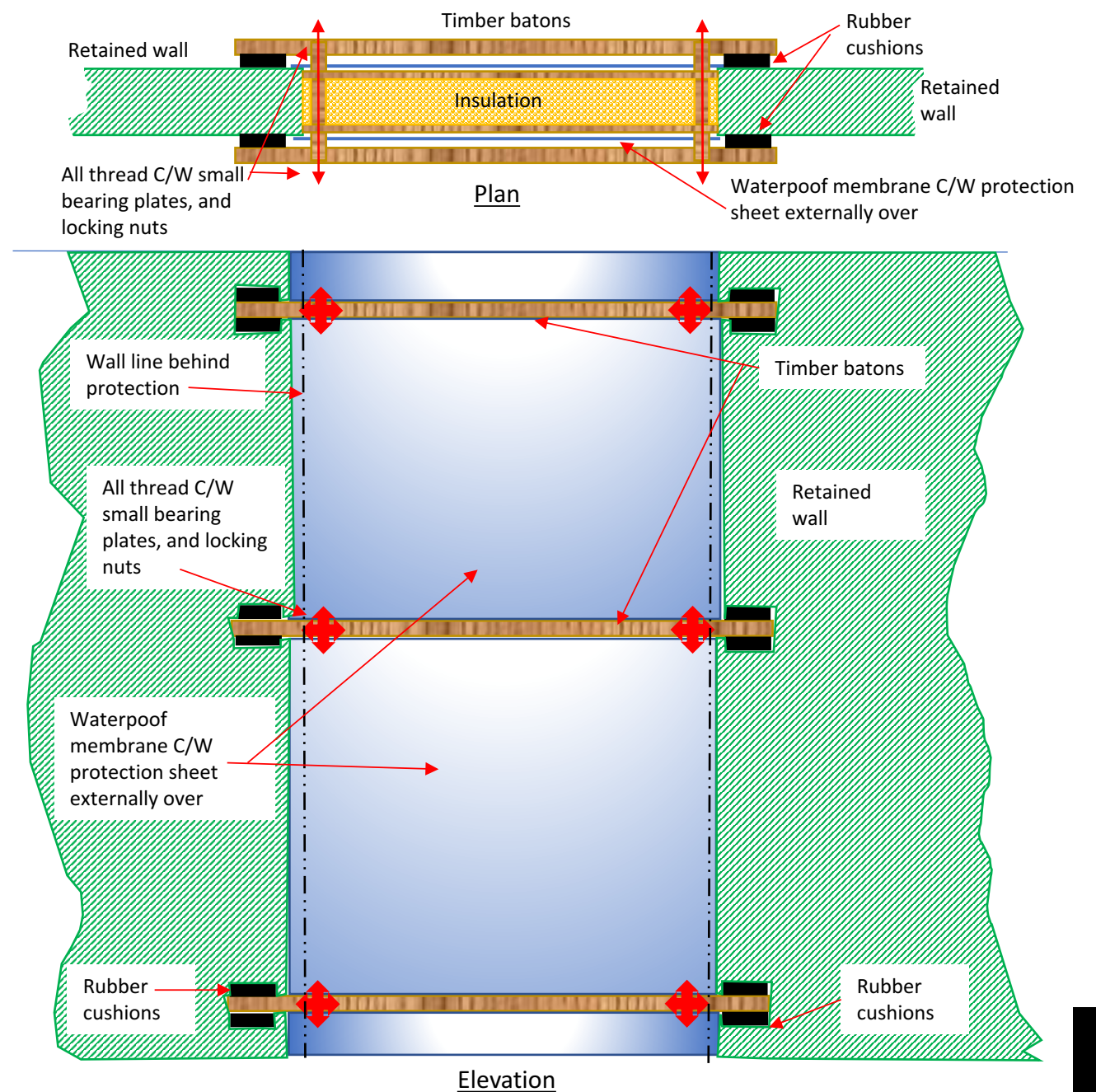
Protection Detail

Aperture following separation from demolished structure

- Areas to be fully stripped back to structure.
- Install protection to structure to be retained, prior to separations being formed
- Localised dust suppression to be utilised.
- Diamond cutting equipment is water fed to mitigate dust. Wet vacuums to be utilised to all working areas
- Securing points (all thread) to be located away from walls)
- Rubber to be used to cushion baton overlap to walls

Propping Information

- Once structure is fully stripped back, design can be produced for temporary works to support retained structure.
- From case studies, we are confident that a scaffold working deck could be used from Ground slab, to underside of First Floor. Gradual cutting and removal to be the preferred method, to reduce the structure.
- Additional propping maybe required, such as acro, RMD etc, but this will be designed and approved prior to installation
- Penultimate cutlines will be away from the structure to be retained. This allows the final cutlines to be carefully formed, leaving the retained structure with not residual elements from the demolished structure, and no loading issues to the retained structure.



Working With