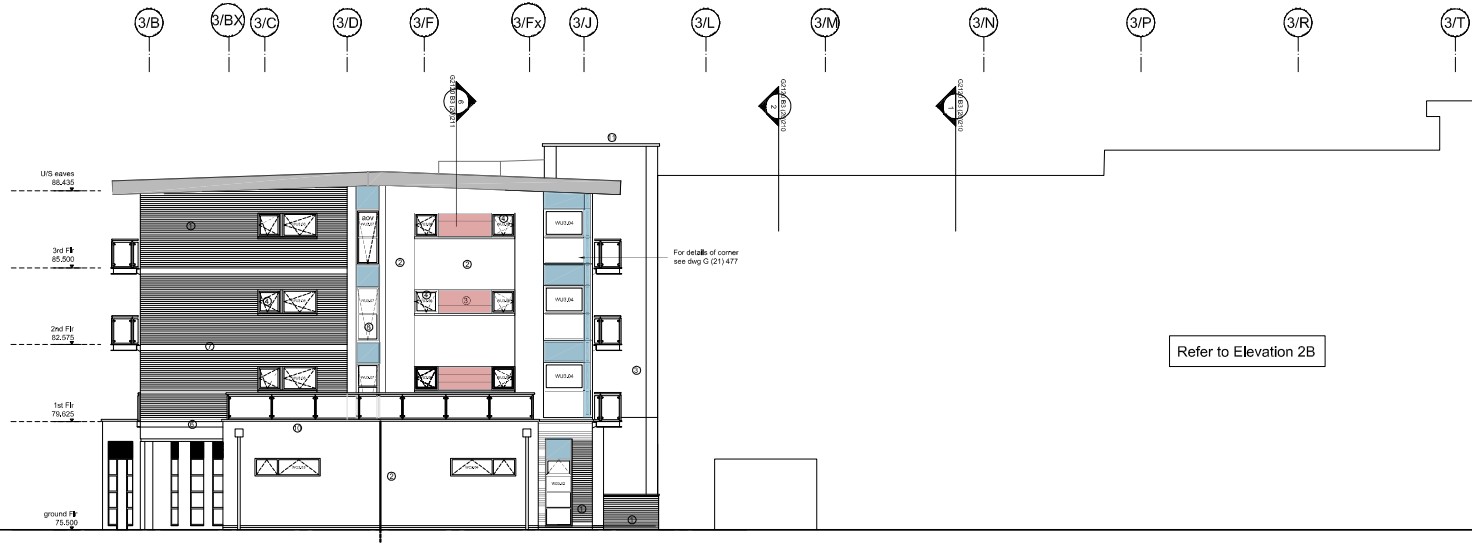


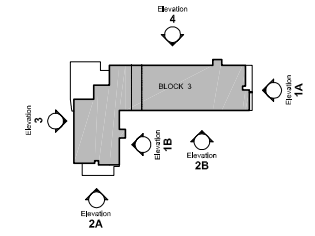


Elevation 2B (South West)



Elevation 2A (South West)

Material Legend	
1.	Buff Facing Brick
2.	Render
3.	Metal cladding panels
4.	Speedframe UPVC windows & doors
5.	Render to balconies-spec withdrawn
6.	Painted steel balcony
7.	GRP feature band
8.	Cliverns curtain walling system/windows
9.	Glazed canopy on exposed steel frame
10.	Stone coping to parapet wall
11.	Pressed metal coping



Notes:
 See also drawings:
 B3 (20) 300 - 302 for Setting Out
 B3 (20) 210 - 211 & 400 - 407 for Sections
 B3 (20) 206 - 208 for Elevations
 G (21) 400 - 420 for Plan & Section Details
 B3 (30) 500+ for Door Schedules
 B3 (31) 500+ for Window Schedules
 G (27) 400 Series for Roof Details
 Stairs as shown on section dwgs and as detailed by pre-cast concrete manufacturer

RECORD DRAWING
 This drawing represents the final version of information supplied by Powell Dobson Architects to the contractor, plus any site changes advised by the contractor.

BLOCK 3

This drawing must not be scaled. Figured dimensions and levels to be used. Any inaccuracies must be notified to the architect. Detail drawings and large scale drawings take precedence over smaller drawings.

Revisions:			
A	09.01.06	of	Creche bin store door relocated to elevation 2A following redesign as SD comments 19.10.2005, Mtd transome omitted to balcony screens, Balconies and windows adjusted to match plans, Creche window configuration corrected, Balcony design changed to pre-fabricated metal units, render panels behind balconies changed to brickwork, Adjacent panels changed as appropriate (see minutes of meeting on 15.12.05)
B	16.02.06	cht	Privacy walls updated to show metal cladding. - Issued to planning (see letter of 16th Feb 2006).
C	23.02.06	af	First floor balconies overlooking Play Areas amended to 'Juliette' - Issued to planning (see letter of 23rd Feb 2006).
D	28.02.06	cht	Movement joints added and section lines amended.
E	24.07.06	cht	Window numbers added, Cladding joints between windows revised, Fire mains box added RWPP relocated to suit, Ground floor elevations amended in accordance with Scrumville Design fax. Fixed pane to window WU3.06 replaced with tilt & turn, Cladding reference notes added.
F	12.06.06	cht	Fourth floor level note corrected.
G	26.02.07	AF	Cladding joints revised to suit construction detailing as instructed by ENL.
H	11.06.07	CKC	Record Drawing Issue.
J	19.11.07	AF	Extents of shopfront canopies revised to suit proposed shopfront layouts provided by tenants

Indicative location of CPW vent louvres as Contract drawings. For sizes refer to CPW drawing or GA Ground floor plan.

Block 3:
 75.500 - Ground floor FFL based on JNP levels

PRELIMINARY	
DESIGN	
TENDER	Approved
CONSTRUCTION	

powelldobson
 ARCHITECTS

Contract: **Barratt North London
 Comet Square Phase II, Hatfield**

Drawing No. Rev.
 G2120 B3(20) 207 J

Scale: 1:100@A1
 Date: September 2006
 Drawn: cav
 Checked: