

Office of Origin:
 Property Services(Housing),
 Welwyn Hatfield Borough Council
 The Campus
 Welwyn Garden City
 AL8 6AE

Site/Project: New Bin Store Briars lane, Hatfield

Drawing Title:
 New Bin Store Units

Drawing No: BR.03.AA
 Revision:

Scale: 1:200 @ A2 Elevation sections

Design/Project Manager:
 Aaron Berry

Project Surveyor:
 Aaron berry Email: a.berry1@welhat.gov.uk
 Mobile: 07785 451757 - Ext. 2698

Drawn By:
 Ebrahim Mojtabedi Date:
 April 2022

Checked By: Date:

Approved By: Ebrahim Mojtabedi Date: April 2022

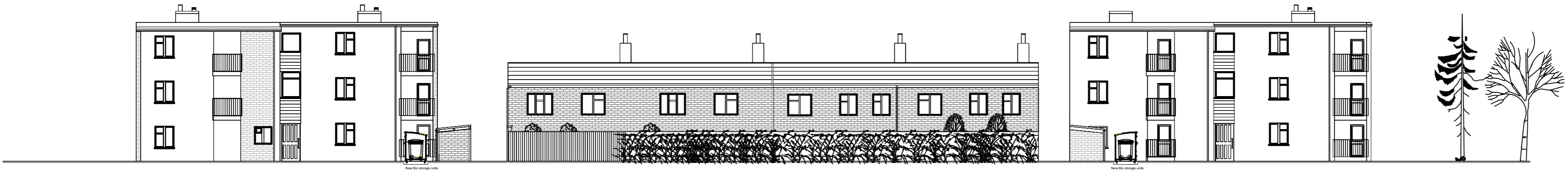
Specification:
New raft foundation Platform
 Remove and excavate (3500x1800) mm & (6500x1800) mm existing vegetation & turf to min 250 mm depth, Remove waste and debris, fill soft level and compact bottom of the excavation fill soft spots. Lay min 100 mm hardcore bed Type 1 MOT Nominal size 40 mm compact well lay min 100 mm site mix C30 concrete slab (1:2:4) cement/sand/gravel with 6 mm diameter wire mesh reinforcement set 50 mm from the top of the finished surface level finish. SR3 surface Regularity +/- 15 mm from planned level toweled smooth concrete finish.
 Lay surface to 1:80 cross fall across narrow dimension of slab with appropriate drainage system to ensure water from surrounding surfaces drained effectively.

Note:
 Contractor to make sure hunched edge of concrete slab is minimum 200 mm larger than the unit dimensions across the width and depth.
 Slab to be n/e 20mm above surrounding area and front of the new floor to be smooth finish to the surrounding.

New concrete flag path.
 Excavate 150 to 165 mm below required finished level (level with existing Tarmac adjacent surfaces).
 Remove waste and debris, and fill in layers including compacting 75 mm crushed broken stone lay semi-dry concrete. Supply & lay new concrete paving flag butted against and along the bin units slab ideally(600x600x50) over sub-base filling the joints in semi-dry mortar mix including cuttings leveling and the like.

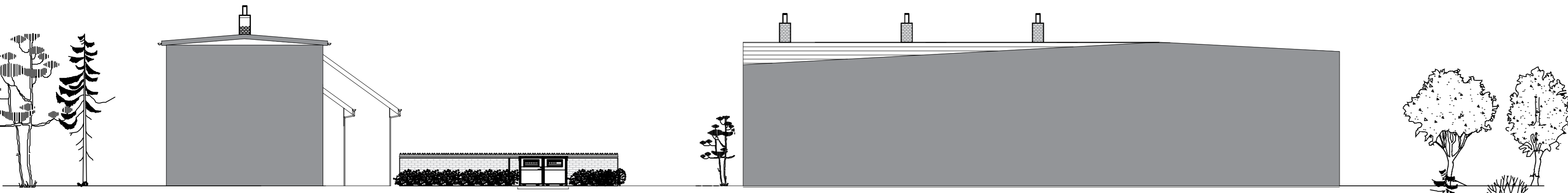
New Bin storage units
 Supply and install six number complete units(3072x1391) mm (3 no for general waste and three number for recycling waste) as General bin storage units such as Metro bin storage or any equal and approved on two locations as the plan.

METROstore.
 Streetspace Ltd, Unit P Lympe Industrial Park, Otterpool Lane, Lympe, kent, CT21 4LR. Tel: 08450 750 760



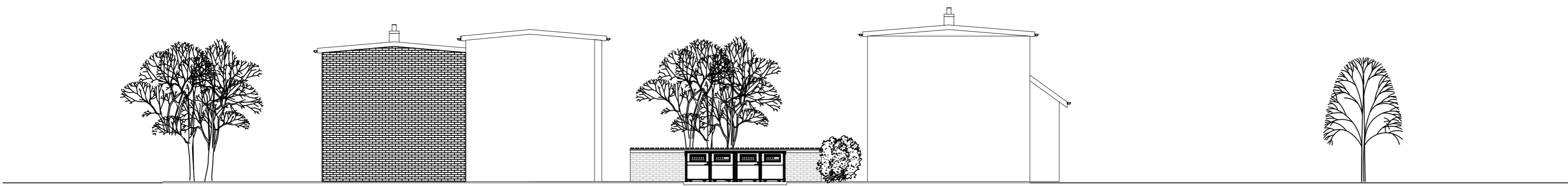
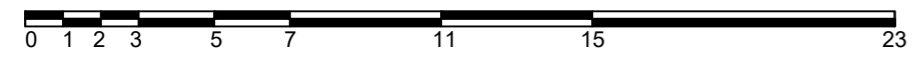
SCALE: 1= 200

Section C C



SCALE: 1= 200

Section B B



SCALE: 1= 200

Section A A

SCALE: 1= 200

