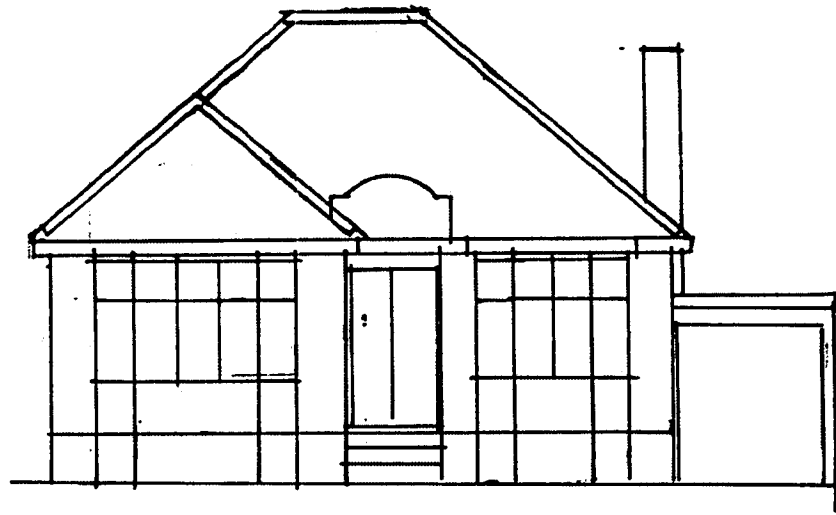
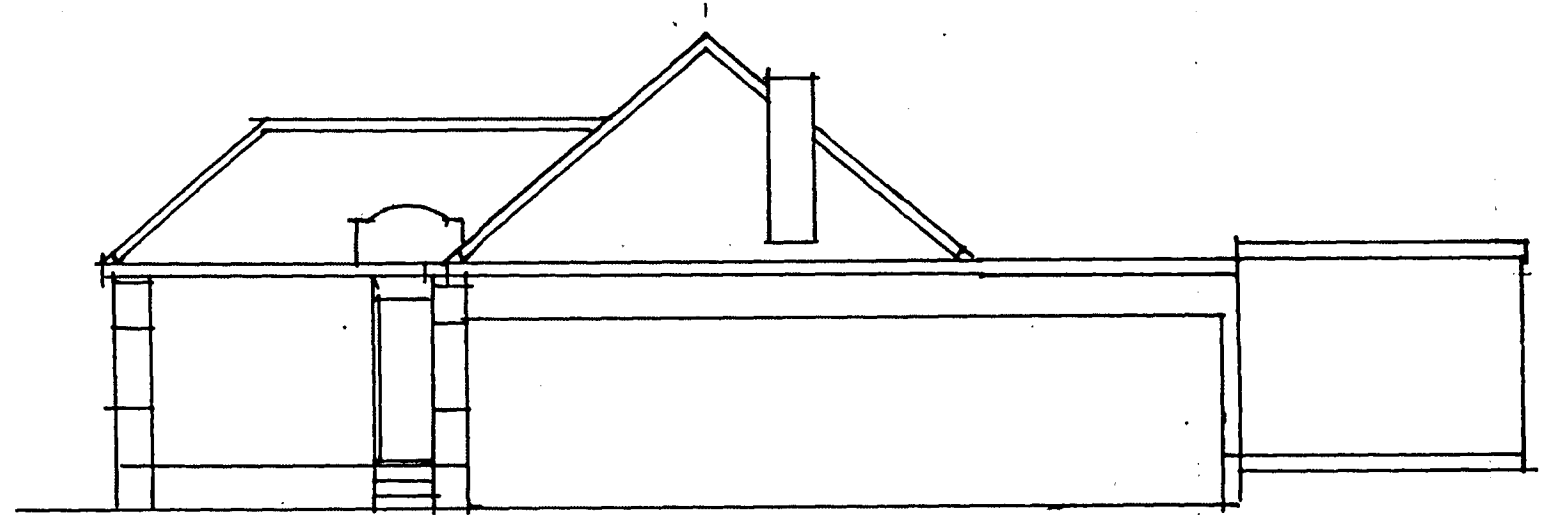


PROPOSED EXTENSIONS AND ALTERATIONS AT 17 KINGSMEAD, CUFFLEY, HERTS.



FRONT ELEVATION 1:50

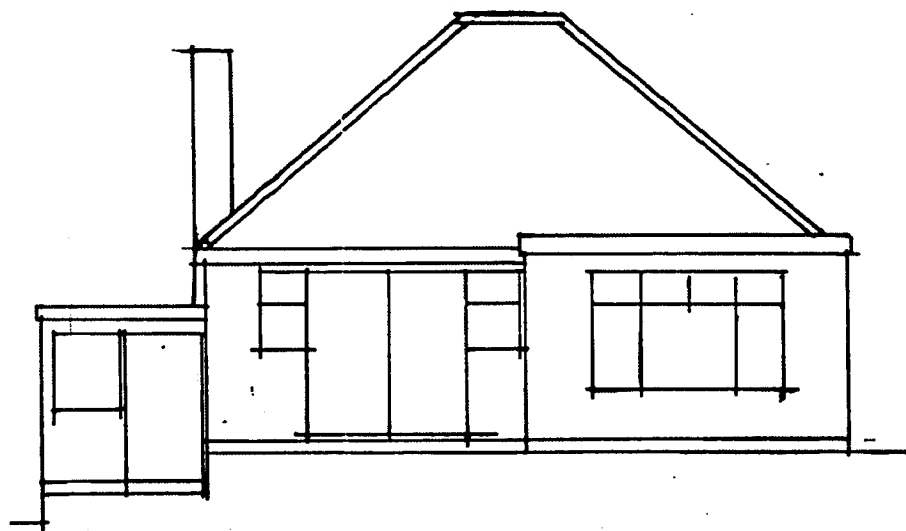


NORTH ELEVATION 1:50

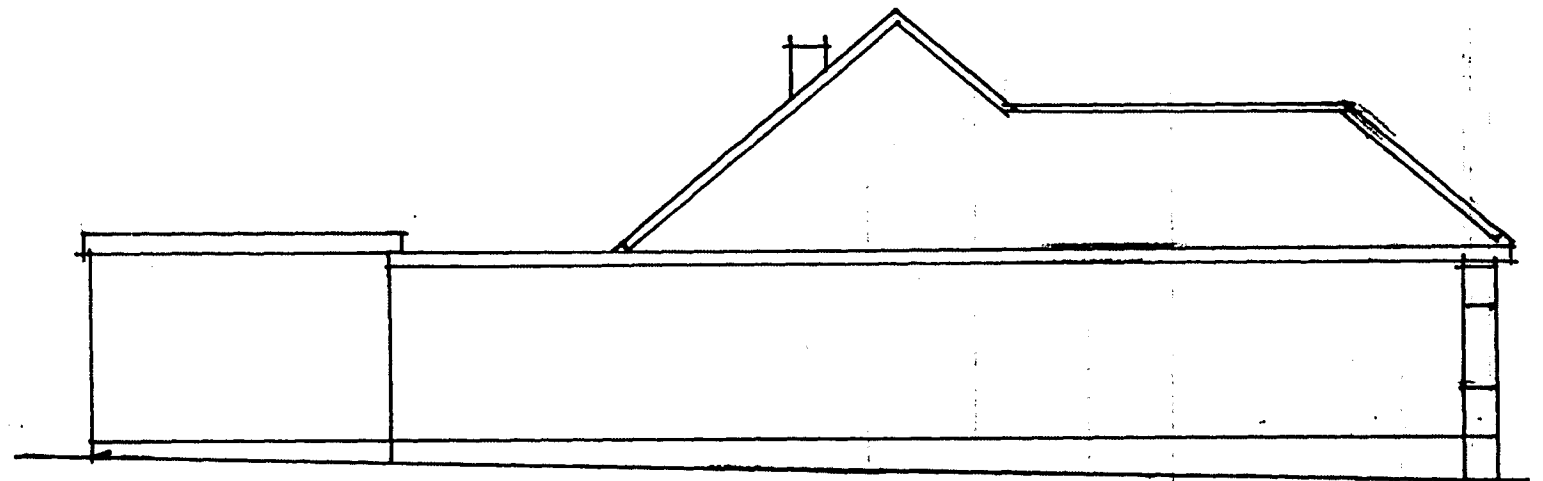
2013/2202

PLANNING
DEPARTMENT

06 NOV 2013

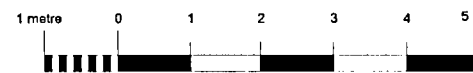


REAR ELEVATION 1:50



SOUTH ELEVATION 1:50

AS EXISTING



PLANNING

1:50@A1

Org. No. PA05