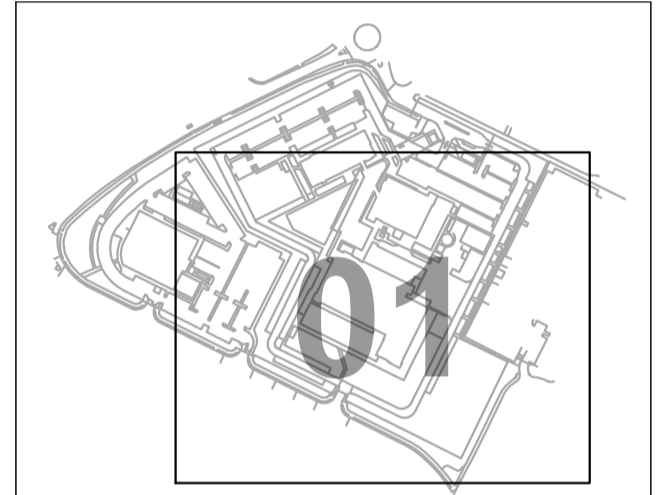




GENERAL NOTES

1. TREE CATEGORIES AS DEFINED BY BS 5837:2012
2. TREE LOCATIONS ARE BASED ON THE ORDINANCE SURVEY MAPPING AND GPS CO-ORDINATES FROM ON SITE WALKOVER.
3. * INDICATES A TREE / GROUP WHOSE POSITION IS APPROXIMATE AS BASED UPON AERIAL PHOTOGRAPHY AND ON SITE OBSERVATIONS.
4. PLANS SHOULD BE READ IN CONJUNCTION WITH THE AECOM ARBORICULTURAL REPORT.
5. THE ORIGINAL OF THIS DRAWING WAS PRODUCED IN COLOUR - A MONOCHROME COPY SHOULD NOT BE RELIED UPON.
6. DRAWING REFERENCES:
 OS Map.dwg

KEY PLAN



KEY

- A CATEGORY TREE, GROUP, HEDGE, OR WOODLAND (HIGH QUALITY & VALUE)
- B CATEGORY TREE, GROUP, HEDGE, OR WOODLAND (MODERATE QUALITY & VALUE)
- C CATEGORY TREE, GROUP, HEDGE, OR WOODLAND (LOW QUALITY & VALUE)
- U CATEGORY TREE, GROUP, HEDGE, OR WOODLAND (UNSUITABLE FOR RETENTION)
- ROOT PROTECTION AREAS (RPA) (AS DEFINED BY BS 5837:2012)
- APPROXIMATE SHADING ARC (AS DEFINED BY BS 5837:2012)

ISSUE/REVISION

NO	DATE	DESCRIPTION
P01	DATED	FIRST ISSUE
IR	DATE	DESCRIPTION

DRAWING STATUS

ISSUE

PROJECT NUMBER

60681916

SHEET TITLE

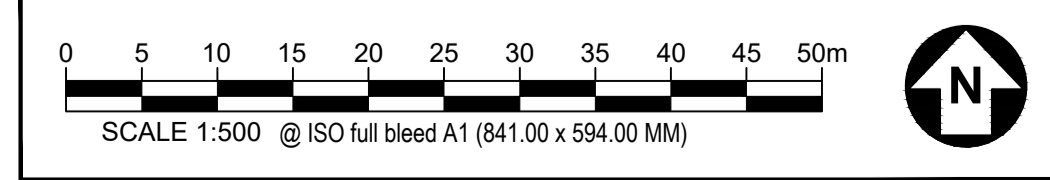
TREE CONSTRAINTS
 PLAN(SHEET 01)

SHEET NUMBER

60681916-ACM-XX-XX-AB-TCP-001

REV.

P01



This drawing has been prepared for the use of AECOM's Client. It may not be used, modified, reproduced or relied upon by third parties, except as agreed by AECOM or as required by law. AECOM accepts no responsibility, and denies any liability whatsoever, to any party that uses or relies on this drawing without AECOM's express written consent. Do not scale this document. All measurements must be obtained from the stated dimensions.