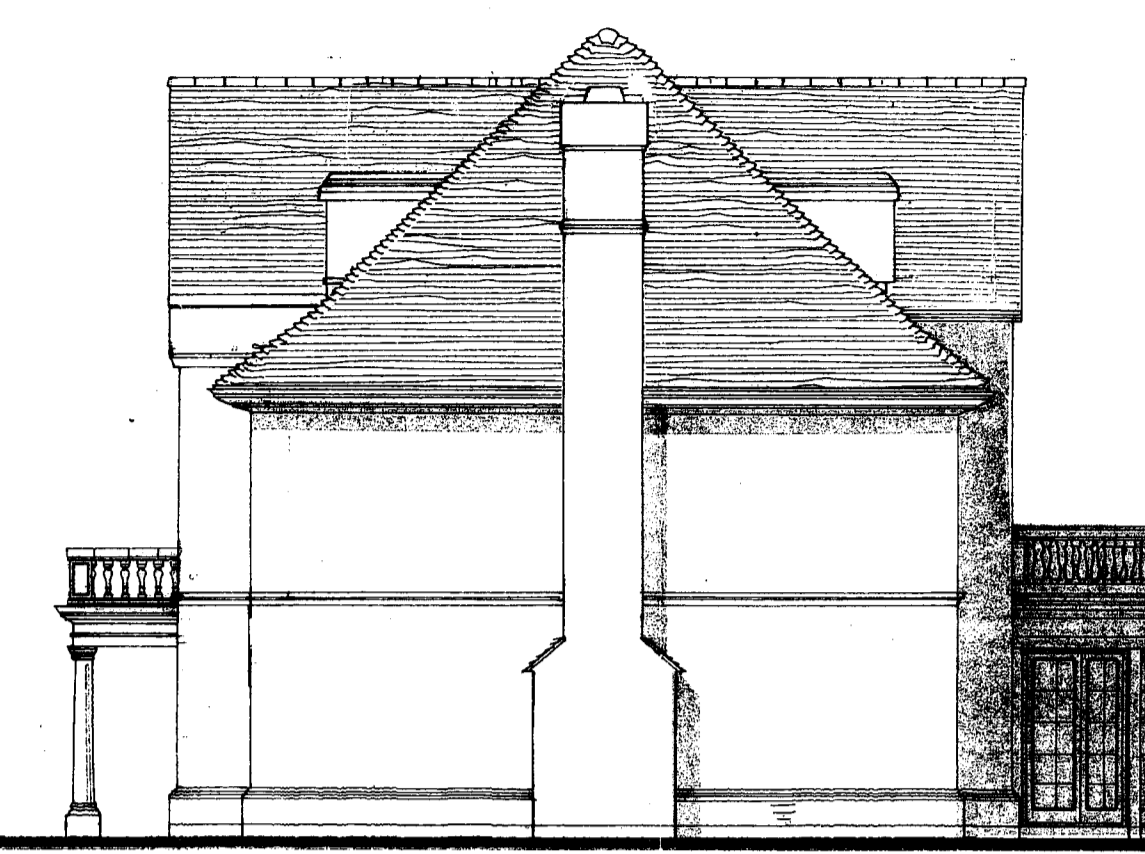


**EXTERNAL MATERIALS**

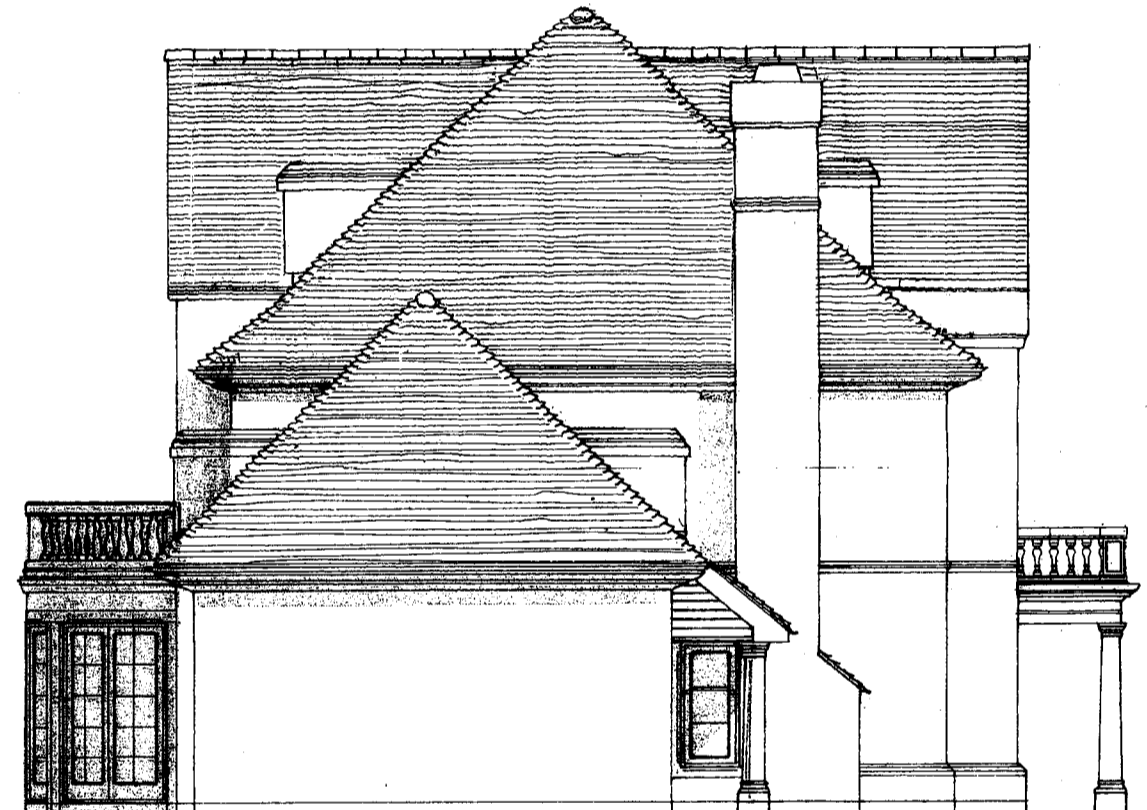
- ROOF:** To be plain clay tiles at 45° pitch roof, base of roof flared to 40° with matching fittings
- WALLS:** To be selected high quality stock facing brick in gauged stretcher bond courses. Stone dressings – selected reconstituted stone window surrounds, plinths, string courses, and parapets.
- FENESTRATION:** To be classic Georgian double-hung white sash windows with matching French doors and full height lights as indicated. Dormer windows – to be matching casements in flat top lead dormers with lead cheeks.



**EAST REAR ELEVATION** Straight segmental glass panels to balustrading to curved bay to dining room with master bedroom balcony above



**SOUTH GABLE ELEVATION**

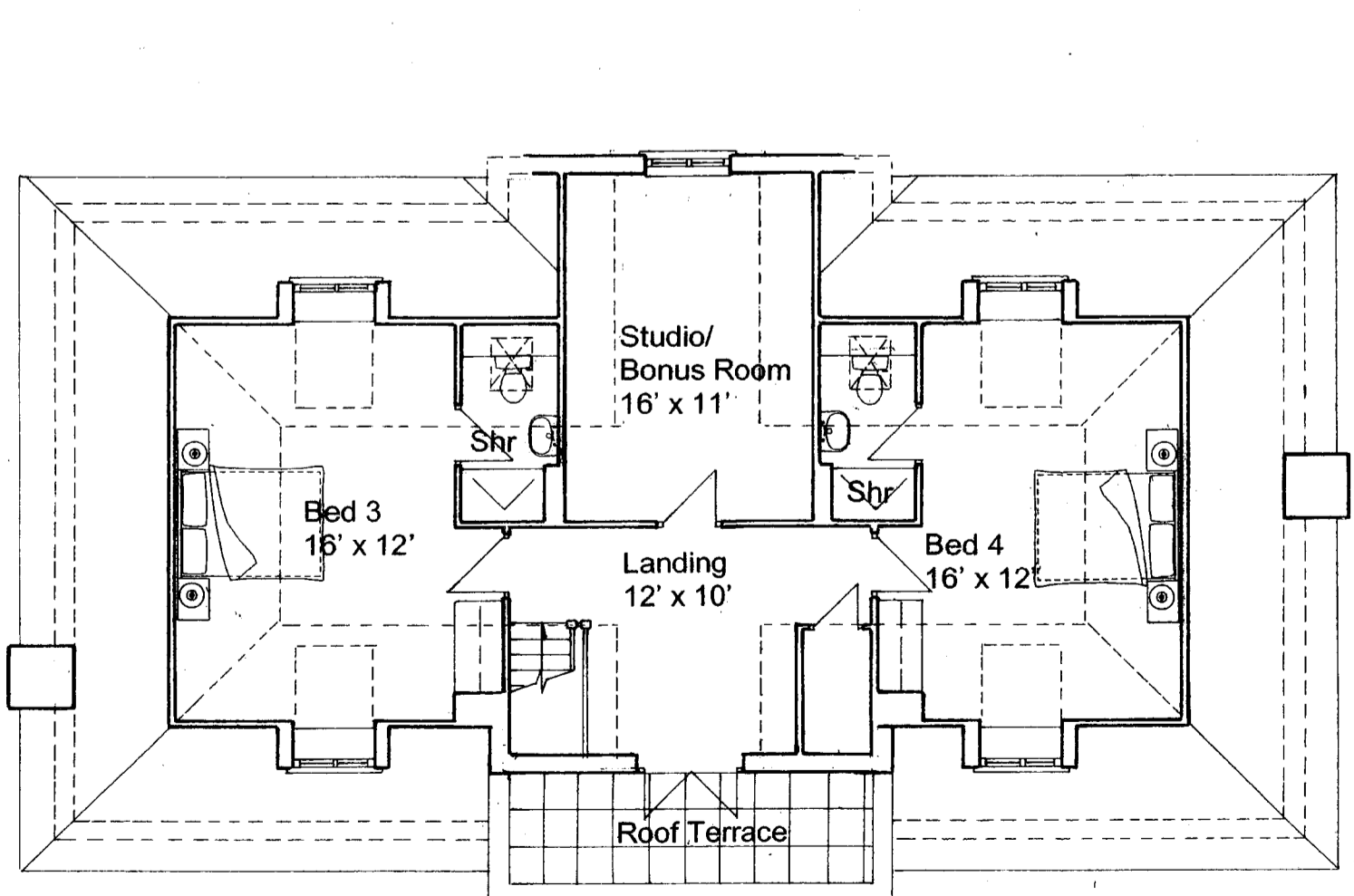


**NORTH GABLE ELEVATION**

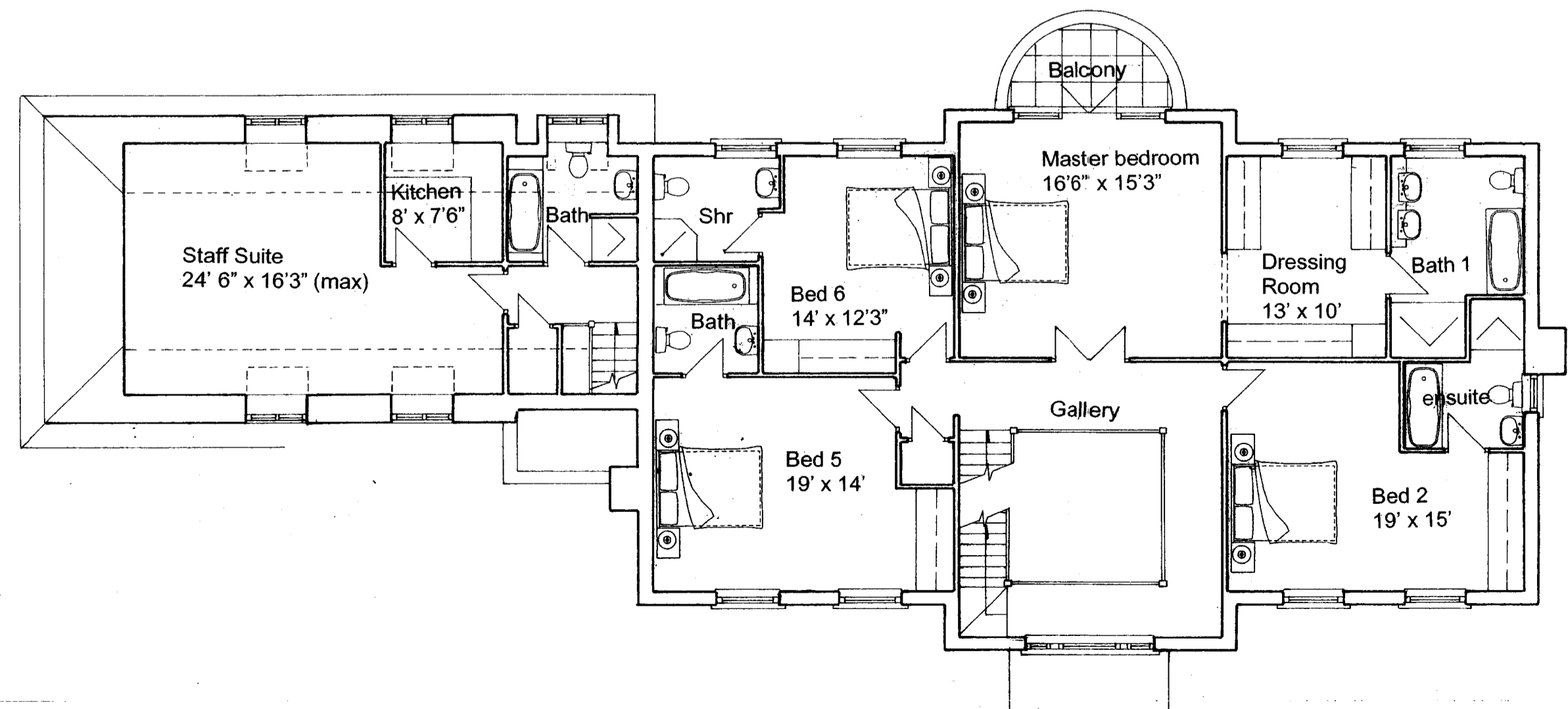


**WEST FRONT ELEVATION**

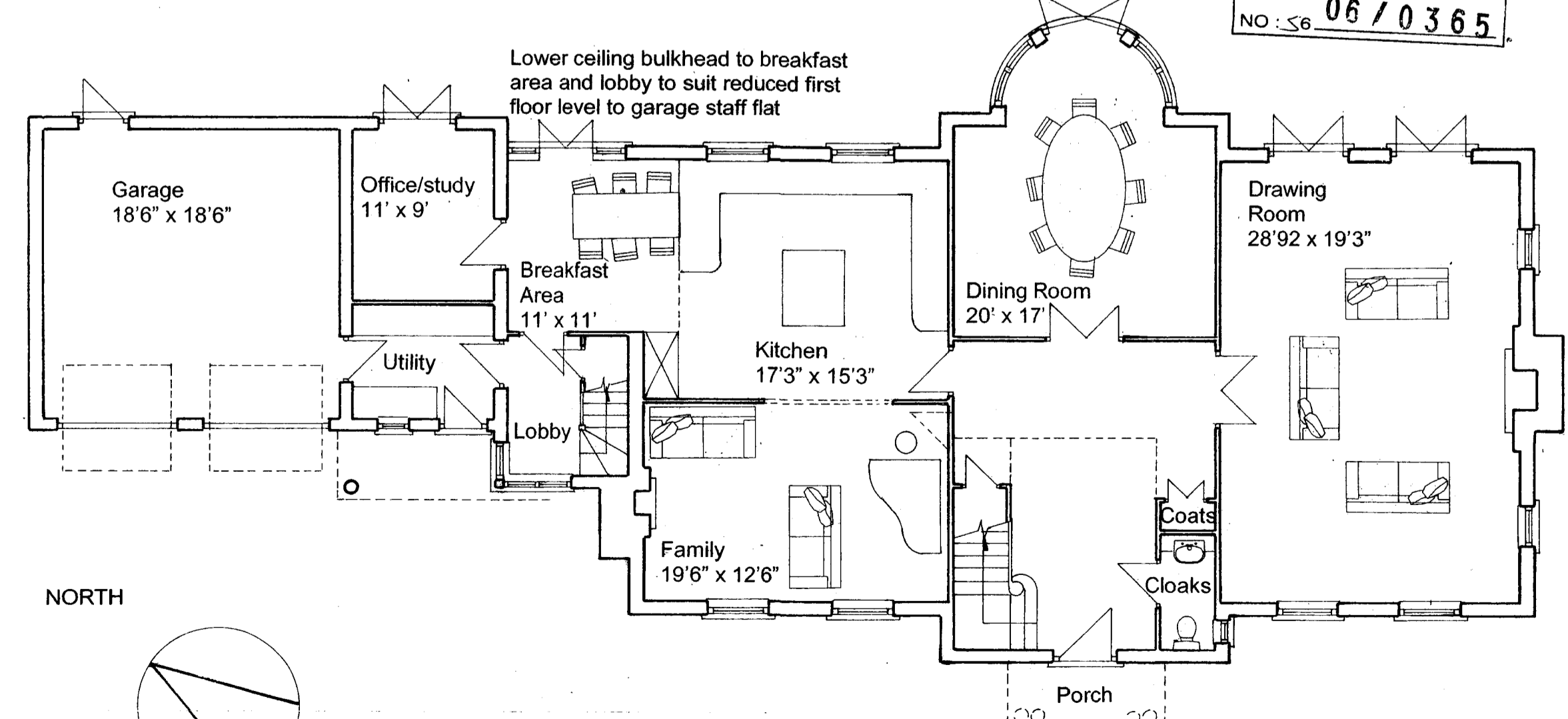
PLANNING DEPARTMENT OFFICE COPY  
22 MAR 2006  
NO: 56 06/0365



**SECOND FLOOR PLAN**



**FIRST FLOOR PLAN**



**GROUND FLOOR PLAN**

**David Parker Architects Ltd**

Notes / Revisions  
Scale off drawings for planning purposes only  
Revision A Amended to clients comments

Client **MILLGATE HOMES**  
Project **BEDWELL PARK**  
Location **ESSENDON**

Drawing title **TENNIS COURT HOUSE PLANS & ELEVATIONS**  
Status **PLANNING**  
Drawn by **DWP/JKC**

Drawing **06 ESS P1**  
Scale **1:100**  
Date **20.02.06**  
Revised **A**  
Date revised **10.03.06**