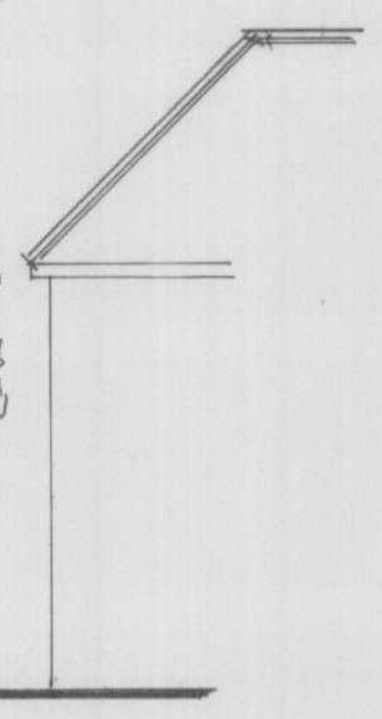


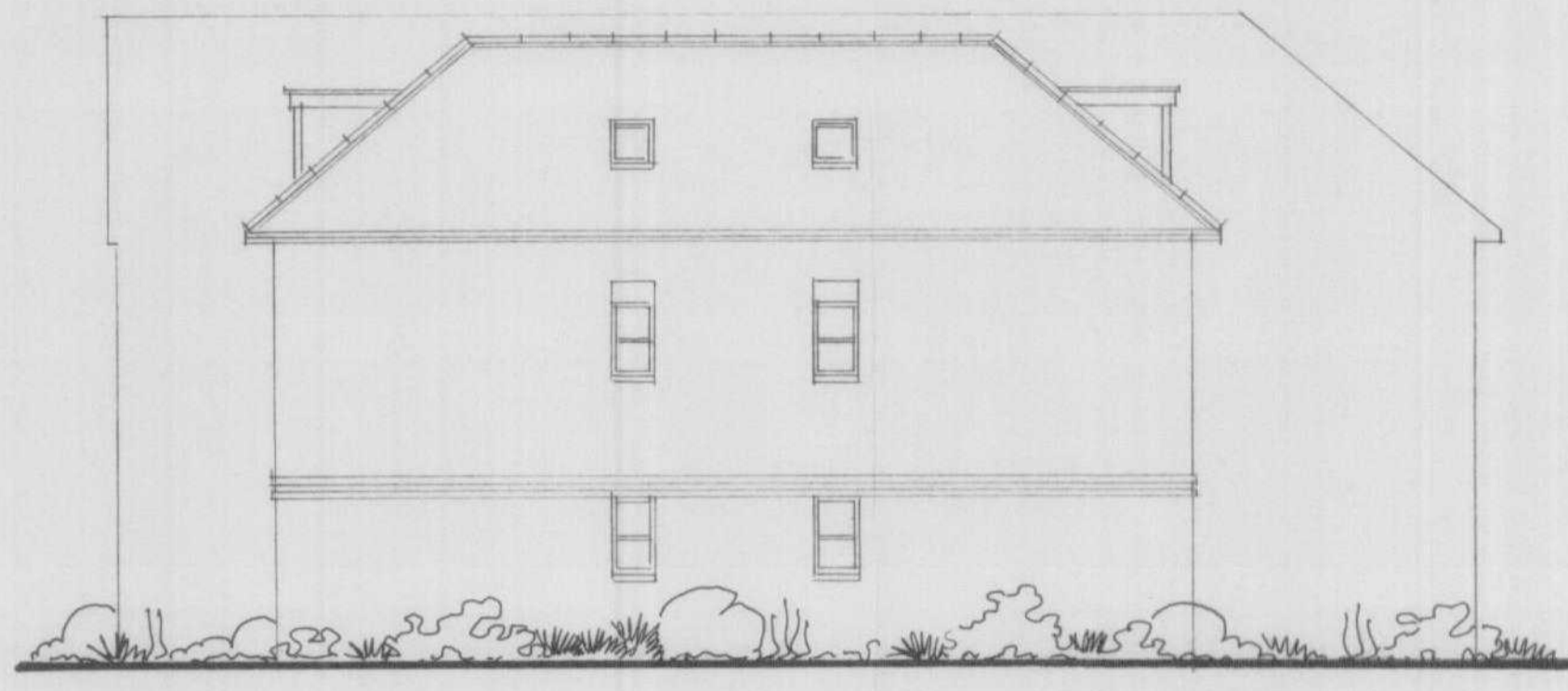
This document is the Copyright of W J Macleod Architect unless formally assigned in writing.
 REV. A. DEVELOPMENT REDUCED TO 7 UNITS, PARKING, EXISTING CYCLE STAIRS ADJUSTED.



SOUTH WEST



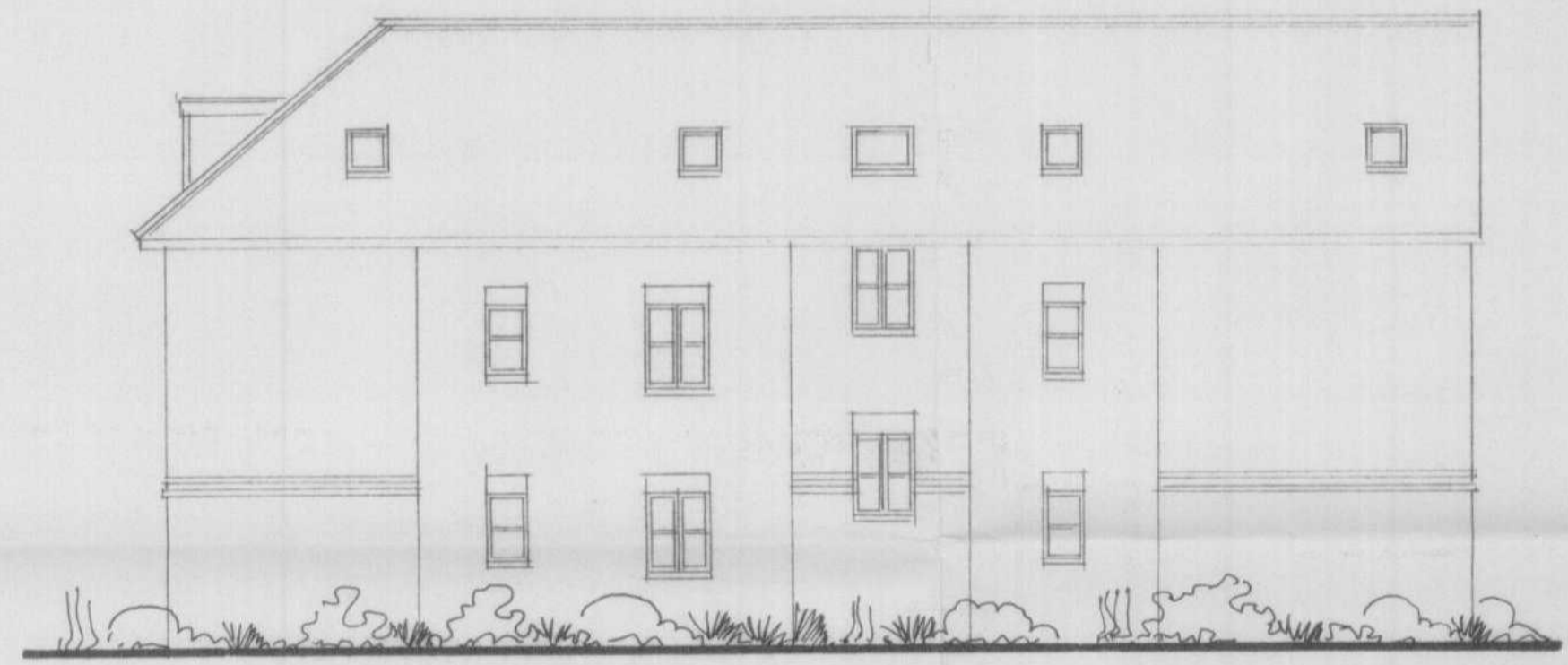
NEW DEVELOPMENT



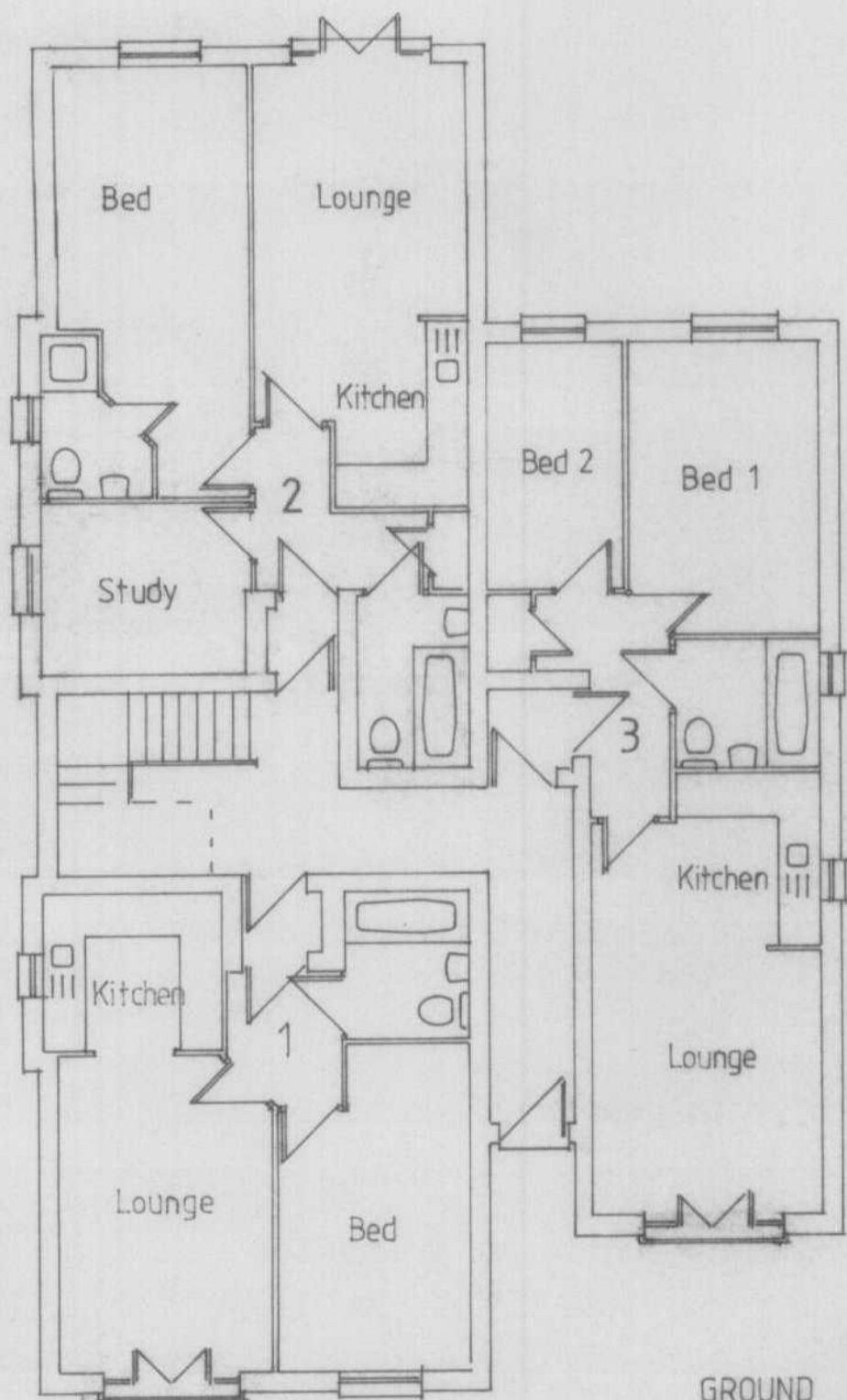
SOUTH EAST



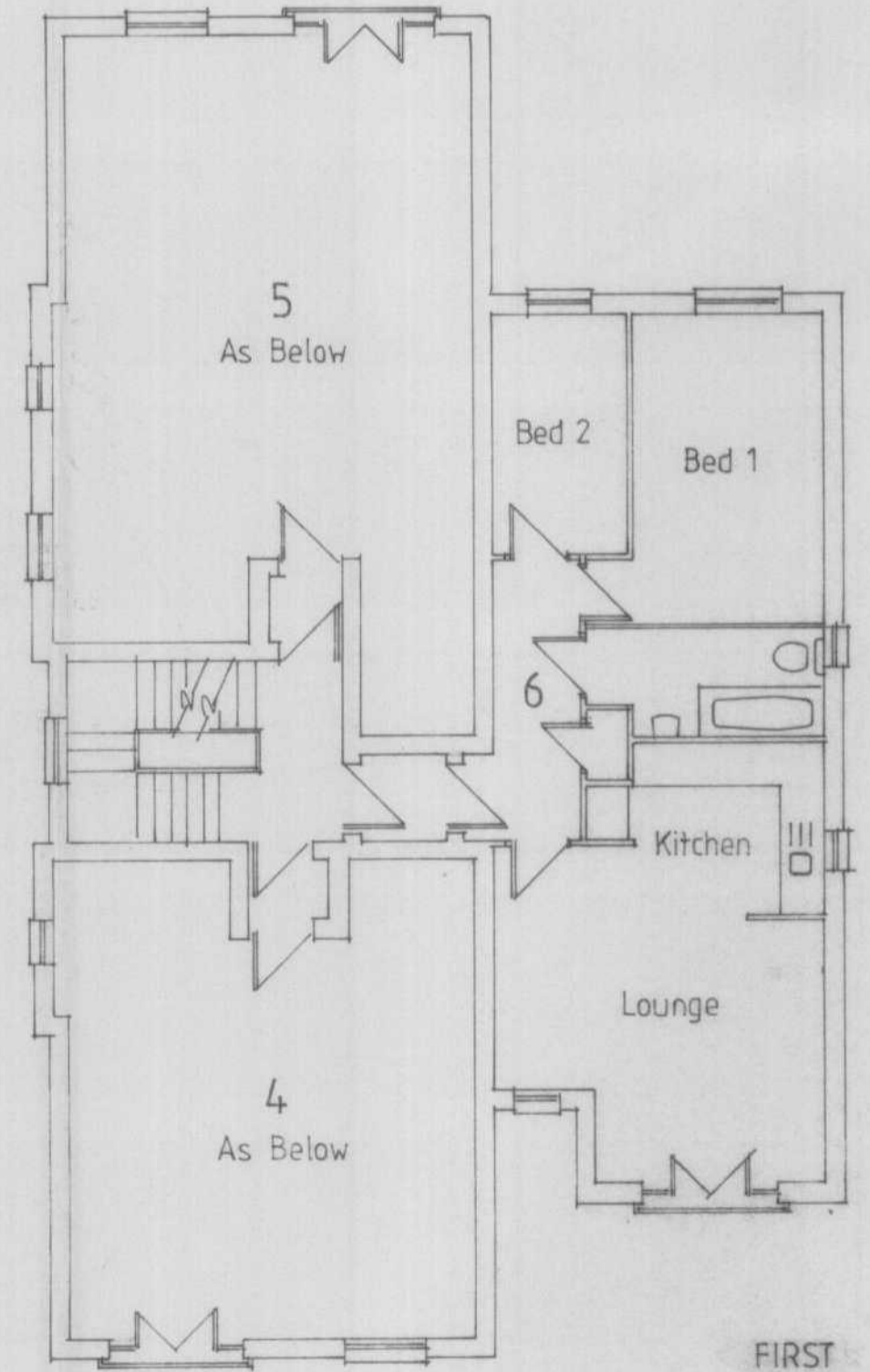
NORTH EAST



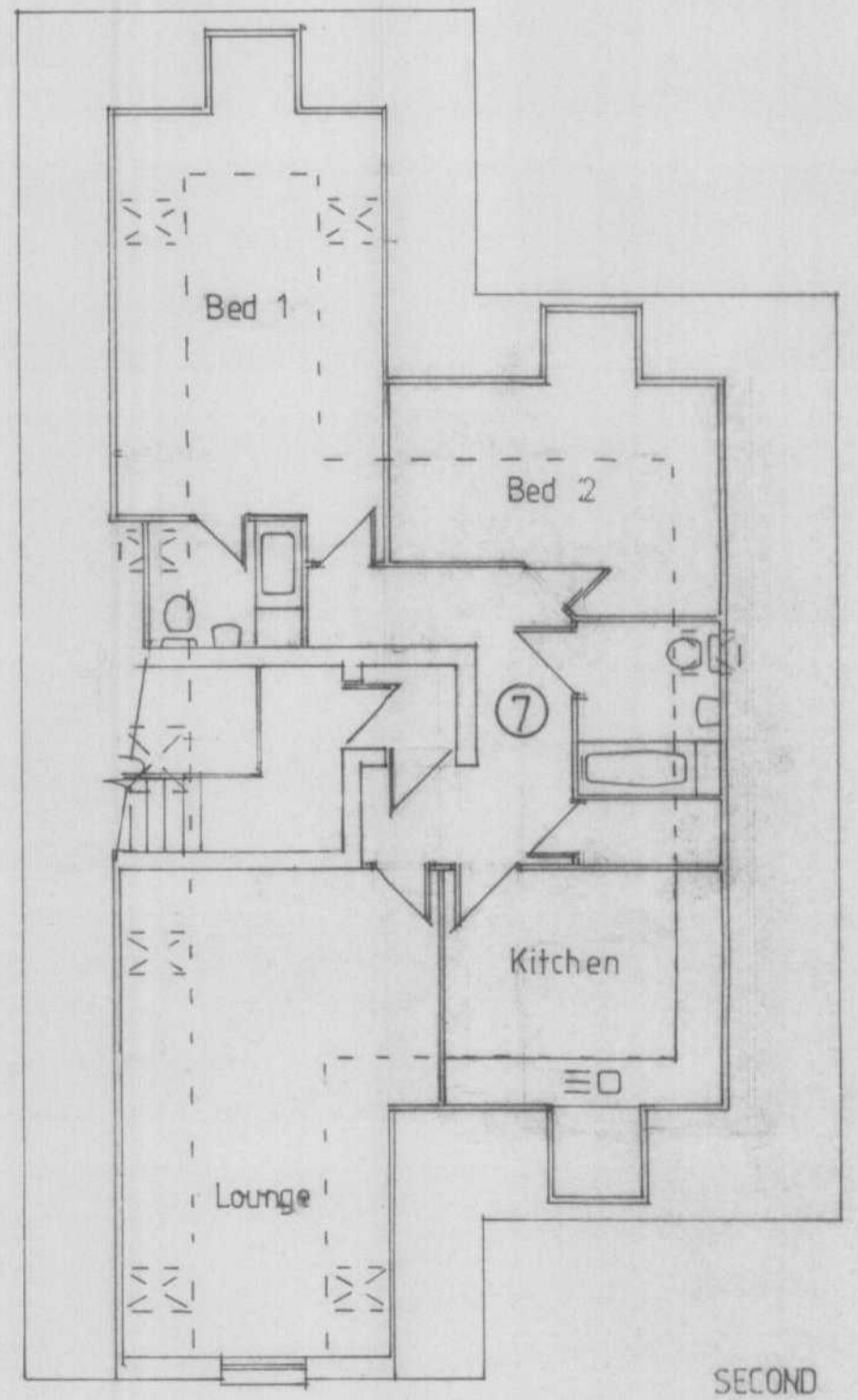
NORTH WEST



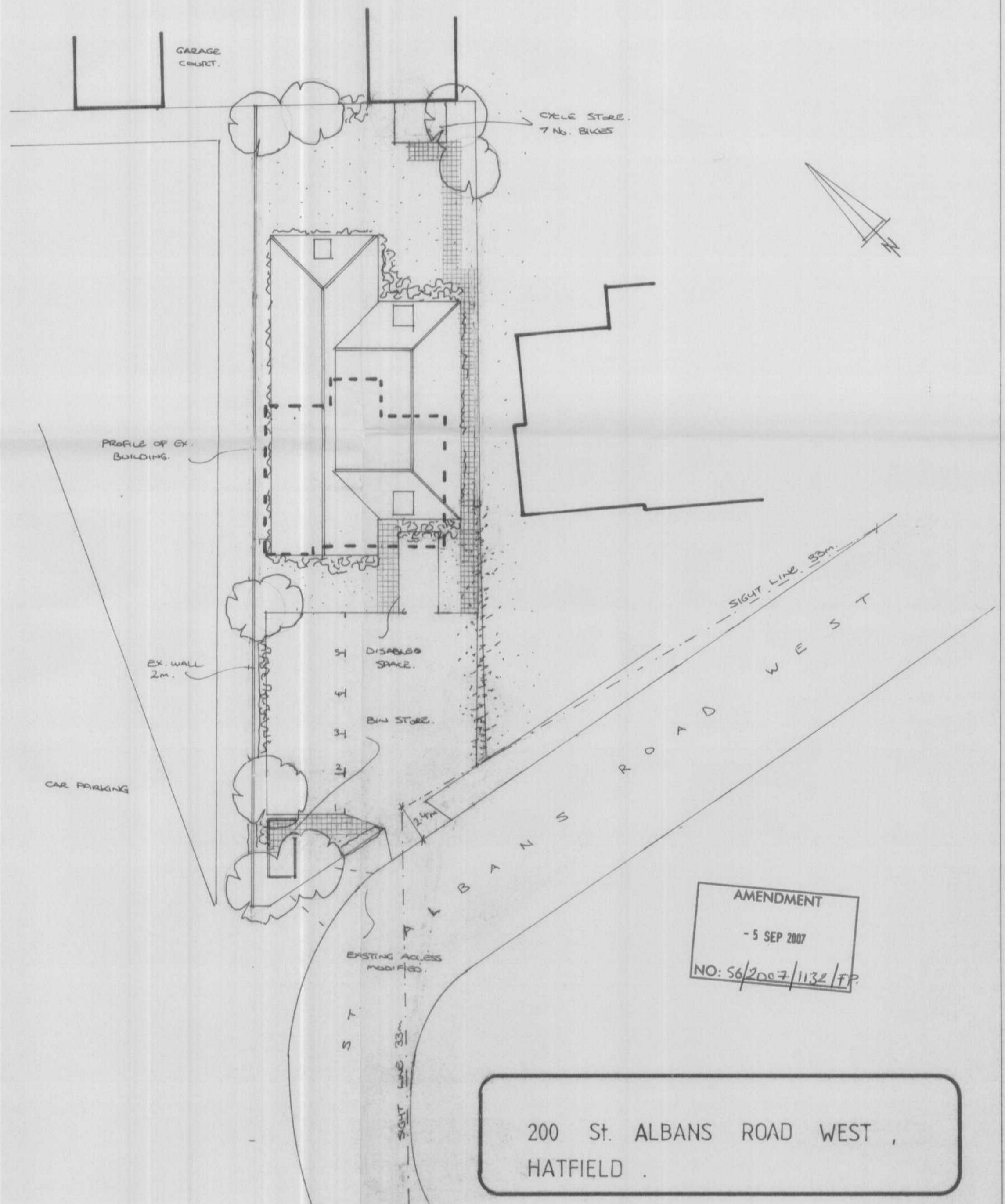
GROUND



FIRST



SECOND



AMENDMENT
 - 5 SEP 2007
 NO: 56/2007/1132/FP

200 St. ALBANS ROAD WEST,
 HATFIELD

W J Macleod
 ARCHITECT
 220 High Street, Northwood, Middlesex TW8 1BL, phone 01823 842600

Drawing Number	07 / 3113 / 1	Revision	A
Date	18 / 6 / 07	Drawn by	
Scale	1 : 200	Draw Reference	H