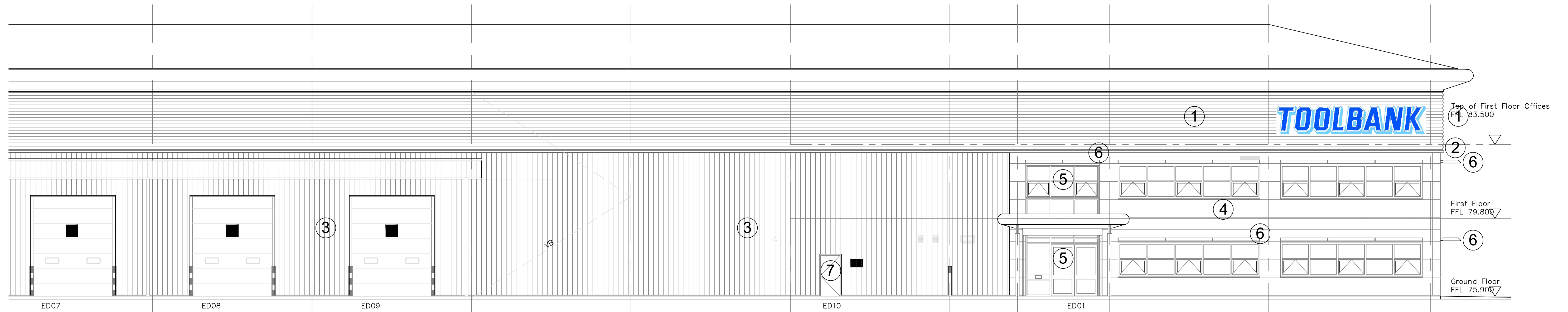
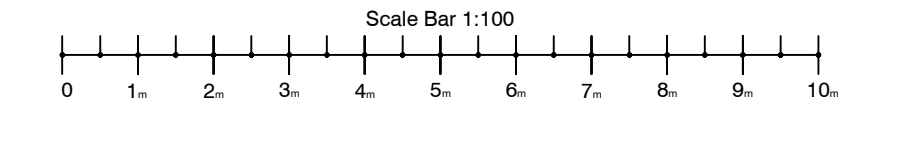


PART PROPOSED SOUTH WEST ELEVATION



PART EXISTING SOUTH WEST ELEVATION

KEY SCHEDULE OF MATERIALS:

- ① WALL CONSTRUCTION  
EXTERNAL WALLS: High Level Cladding;  
Horizontally spanning half round profile built up wall cladding system, HPS200 Ultra finish,  
Colour: Duck Egg Blue
- ② Feature Band between high and low level cladding types; HPS200 Ultra finish,  
Colour: To match Merlin Grey, RAL 180 40 05
- ③ EXTERNAL WALLS: Low Level Cladding to Warehouse and to Canopy over loading doors;  
CA Twintherm Vertically laid Trapezoidal profile built up wall cladding comprising:  
0.7mm thick outer sheet, with HPS200 Prisma finish,  
Colour: Metallic Silver RAL 9006, with White Internal lining  
Insulation to be non-combustible and thickness to meet U-Values  
Class O rated internal lining for surface spread of flame to BS 475.  
Inner leaf to be close textured paint grade blockwork up to 2.25m high.
- ④ EXTERNAL WALLS AND WINDOWS to Office Area:  
Horizontally spanning composite Micro-rib steel faced panel, with pre-formed mitred corners,  
HPS200 Prisma finish, with Ventilation grilles, Colour: Metallic Silver RAL 9006
- ⑤ PPC Window / door frames and curtain walling with grey tinted anti-sun glazing and grey look alike  
spandrel panel where required, including letter plate to main entrance doors.  
External frame colour, Graphite Grey RAL 7024, Internal frame colour, White RAL 9010
- ⑥ PPC coated aluminium louvred Brise Soleil fixed through cladding above glazing frames,  
Colour White RAL 9003
- ⑦ PERSONNEL DOORS TO WAREHOUSE: Galvanised and insulated mild steel in steel frame.  
Colour: Merlin Grey RAL 180 40 05

Curtain Walling

Composite Cladding & Curtain Walling to Offices

No.	DATE	REVISION

PROJECT: TOOLBANK  
GYPSY MOTH AVENUE  
HATFIELD BUSINESS PARK  
HATFIELD  
AL10 9BS

CLIENT: DORMOLE LIMITED

TITLE: EXISTING AND PROPOSED  
SOUTH WEST ELEVATION

SCALE: 1:100 @ A1

DATE: 18 / 05 / 2021

DRAWING No: 0 / 6314 -21 / 07

CAD Ref: elevation.dwg

DRAWN: FSG

**Lewis Berkeley**  
92 BANNER STREET  
LONDON EC1Y 8JU  
Tel: 020 7491 3198 Fax: 020 7491 4488  
email: admin@lewisberkeley.co.uk