

PLANT SCHEDULE

TREES

All selected standards [3-3.5m with 10-12cm girth at 1m. above ground] bare rooted stock planted in min. 900 cubic mm pits

REF	SPECIES	NO.
A	ACER PLATANOIDES	
F	FRAXINUS OXYCARPA 'RAYWOOD'	
O	POPULUS ITALICA	
P	PRUNUS SUB. AUTUMNALIS	

All 1.2M. standards, bare rooted stock planted in min. 900 cubic mm pits

REF	SPECIES	NO.
B	BETULA PENDULA	

SHRUBS

All container grown in 1.5 to 3.0 litre pot sizes and planted in 450mm soil depth.

REF	SPECIES	NO.
Ac	ACER CAMPESTRE	
Ag	ABELIA GRANDIFLORA	
Al	AMELANCHIER LAEVIS	
Bl	BERBERIS THUN. 'AUREA'	
Ca	COLUTEA ARBORESCENS	
Cc	COTINUS COGGYGRIA	
Cl	CORYLUS AVELLANA	
Cp	CRATAEGUS PRUNIFOLIA	
Ea	ELEAGNUS ANGUSTIFOLIA	
Gs	GENISTA HISPANICA	
Ha	HEBE ALBICANS	
Hv	HEBE ELLIPTICA VARIEGATA	
Hm	HEBE MARJORIE	
Hh	HYPERICUM HIDCOTE	
Ia	ILEX AQUIFOLIUM	
Kj	KERRIA JAPONICA	
Ma	MAHONIA AQUIFOLIUM	
Pa	POTENTILLA ABBOTSWOOD	
Pe	POTENTILLA TILFORD CREAM	
Rn	ROSA NEVADA	
Rb	ROSA BLANC. DOUBLE DE COURBERT	
Sg	SENECIO GREYII	
Sa	SPIREA AITCHISONII	
Vo	VIBURNUM OPULUS	
Vr	VIBURNUM RHYTIDOPHYLLUM	
Vt	VIBURNUM TINUS	
Vd	VIBURNUM DAVIDII	
Wg	WEIGELIA FLORIDA VARIEGATA	

CLIMBERS

All container grown 2.0 litre pot size with min. 3 leading shoots fixed to canes.

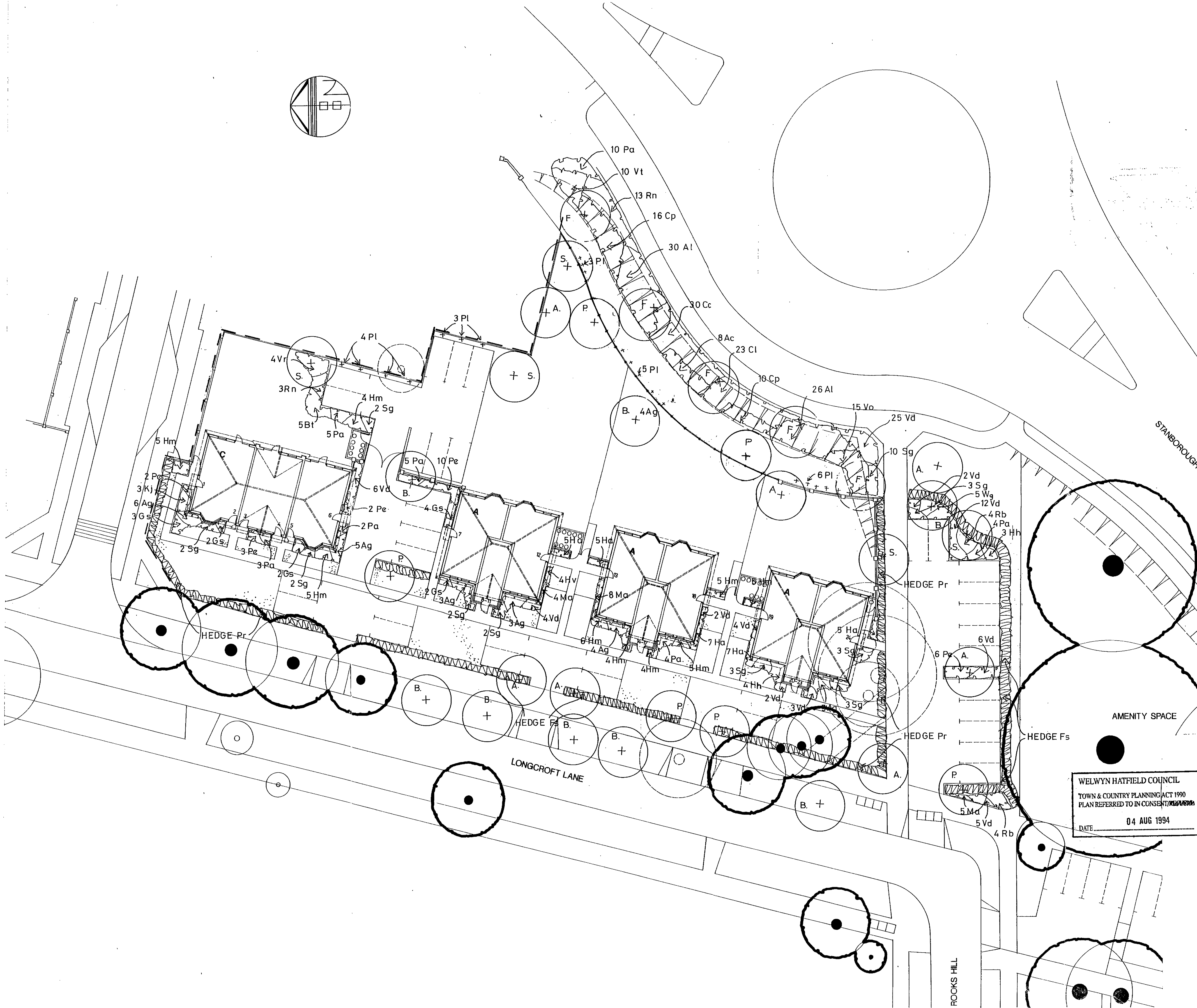
REF	SPECIES	NO.
PI	PARTHENOCISSUS TRICUSP. VEITCHII	

HEDGES

Plant in two rows 500mm apart, in staggered pattern 3 plants/m.

REF	SPECIES	NO.
Fs	FAGUS SILVATICA	
Pk	PYRACANTHA ROGERSIANA	

NOTE: hedges to be kept clipped at 1600mm. height



STANBOROUGH ROAD

AMENITY SPACE

LONGCROFT LANE

ROCKS HILL

OFFICE COPY

WELWYN HATFIELD COUNCIL
 08 JUL 1994
 RECORDED
 N6/482/94

WELWYN HATFIELD COUNCIL
 TOWN & COUNTRY PLANNING ACT 1990
 PLAN REFERRED TO IN CONSENT
 DATE 04 AUG 1994

A: REVISIONS TO PLANTING ALONG OSBOURNE WAY AND TO THE TREE SCHEME 694 VF

PROJECT TITLE
 HOUSING AT LONGCROFT LANE
 WELWYN GARDEN CITY HERTS

DRAWING TITLE
 PLANTING PLAN

PROJECT No.	DRAWING No.	SCALE	DATE
10114	01	1:200	3/94

DRAWN VF
COYNE ASSOCIATES
 LANDSCAPE ARCHITECTS
 STERLING COURT, NOTTON ROAD, STEVEAGE, HERTS SG1 2JY
 TELEPHONE: 0438 728326 FAX: 0438 722035

DO NOT SCALE
 Report any errors or omissions
 Check all dimensions on site prior to commencing the works or preparing any shop drawings.
 This drawing is copyright.

NOTES:

PLANT SCHEDULE

TREES
 All selected standards [3-3.5m with 10-12cm girth at 1m. above ground] bare rooted stock planted in min. 900 cubic mm pits

REF	SPECIES	NO.
AP	ACER PLATANOIDES 'CRIMSON SENTRY'	
AC	ACER CAPPADOCICUM	
CB	CARPUNUS BETULUS 'FASTIGIATA'	
FO	FRAXINUS OXYCARPA 'RAYWOOD'	
FJ	FRAXINUS EXCELSIOR 'JASPIDEA'	
PN	PRUNUS PESSARDII 'NIGRA'	
PP	PRUNUS PADUS 'PURPLE QUEEN'	
PS	PRUNUS SUB. 'AUTUMNALIS'	
PV	PRUNUS VIRGINIANA 'SCHUBERT'	
Q	QUERCUS ROBUR 'FASTIGIATA'	

All 1.2m. standards, bare rooted stock planted in min. 900 cubic mm pits

REF	SPECIES	NO.
	BETULA PENDULA	

SHRUBS
 All container grown in 1.5 to 3.0 litre pot sizes and planted in 450mm soil depth.

REF	SPECIES	NO.
AB	ACER CAMPESTRE	
AI	AMELANCHIER LAEVIS	
Al	ABELIA GRANDIFLORA	
Ba	BERBERIS THUN. 'AUREA'	
Bd	BUDDLEIA ALTERNIFOLIA	
CC	COLLUTEA ARBORESCENS	
Cc	COTINUS COGGYGRIA	
CC	COTONEASTER FRANCHETTI	
CC	CORYLUS AVELLANA	
CC	CORNUS STOLONIFERA 'FLAVIRAMEA'	
Cp	CRATAEGUS PRUNIFOLIA	
Cd	COTONEASTER SALICIFOLIUS 'FLOCCOSUS'	
Ca	DEUTZIA GRACILIS	
Ca	ELEAGNUS ANGUSTIFOLIA	
Ca	GENISTA HISPANICA	
Ha	HEBE ALBICANS	
Ha	HEBE ELLIPTICA 'VARIEGATA'	
Hm	HEBE MARJORIE	
Hh	HYPERICUM 'HIDCOTE'	
Hh	ILEX AQUIFOLIUM	
Kj	KERRIA JAPONICA 'PLENIFOLIA'	
Ma	MAHONIA AQUIFOLIUM	
Pa	POIDENTILLA 'ABBOTSWOOD'	
Pa	PRUNUS LUSITANICA	
Pa	POTENTILLA 'TILFORD CREAM'	
Pa	RUNUS LUSITANICA	
Rn	PYRACANTHA TETON	
Rn	ROSA 'BLANC DOUBLE DE COUBERT'	
Rn	ROSA 'NEVADA'	
Rn	ROSA 'SARA VAN FLEET'	
Sa	SPIREA AITCHISONII	
Sh	SYMPHORICARPOS X CHENAUILLI 'HANCOCK'	
Vi	VIBURNUM OPULIS	
Vi	VIBURNUM TINUS	
Vr	VIBURNUM RHYTIDOPHYLLUM	
Vv	WEIGELA FLORIDA 'VARIEGATA'	

CLIMBERS
 All container grown 2.0 litre pot size with min. 3 leading shoots fixed to canes.

REF	SPECIES	NO.

HEDGES
 All 1.2m. whips, bare rooted planted in 450mm deep trench. Plant in two rows 500mm apart, in staggered pattern 3 plants/m.

REF	SPECIES	NO.
Fs	FAGUS SYLVATICA	
Ia	ILEX AQUIFOLIUM	
Pr	PYRACANTHA ROGERSIANA	
Ac/Cm	ACER CAMPESTRE / CRATAEGUS MONOGYNA	

REVISIONS TO PLANTING ALONG OSBOURNE WAY AND TO THE TREE SCHEME

ADDITIONAL PLANTING 4/94 0 8 JUL 1994

PROJECT TITLE: ADMIRAL HOMES
 LONGCROFT ROAD
 WELWYN GARDEN CITY

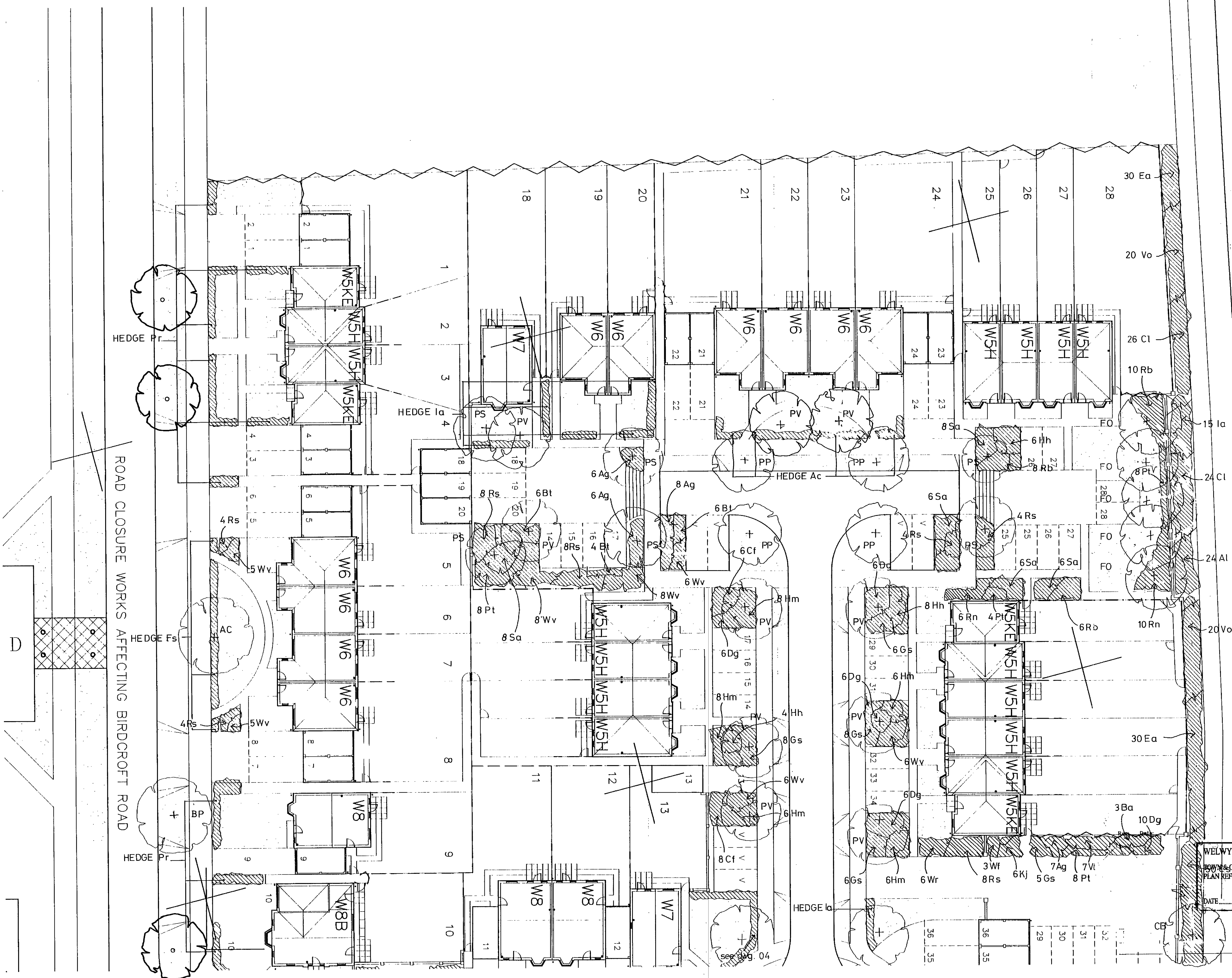
N 6/182/94

WELWYN HATFIELD COUNCIL
 COUNTRYPARTNERSHIP ACT 1994 PLANTING PLAN
 PLAN REFERRED TO IN CONSENT

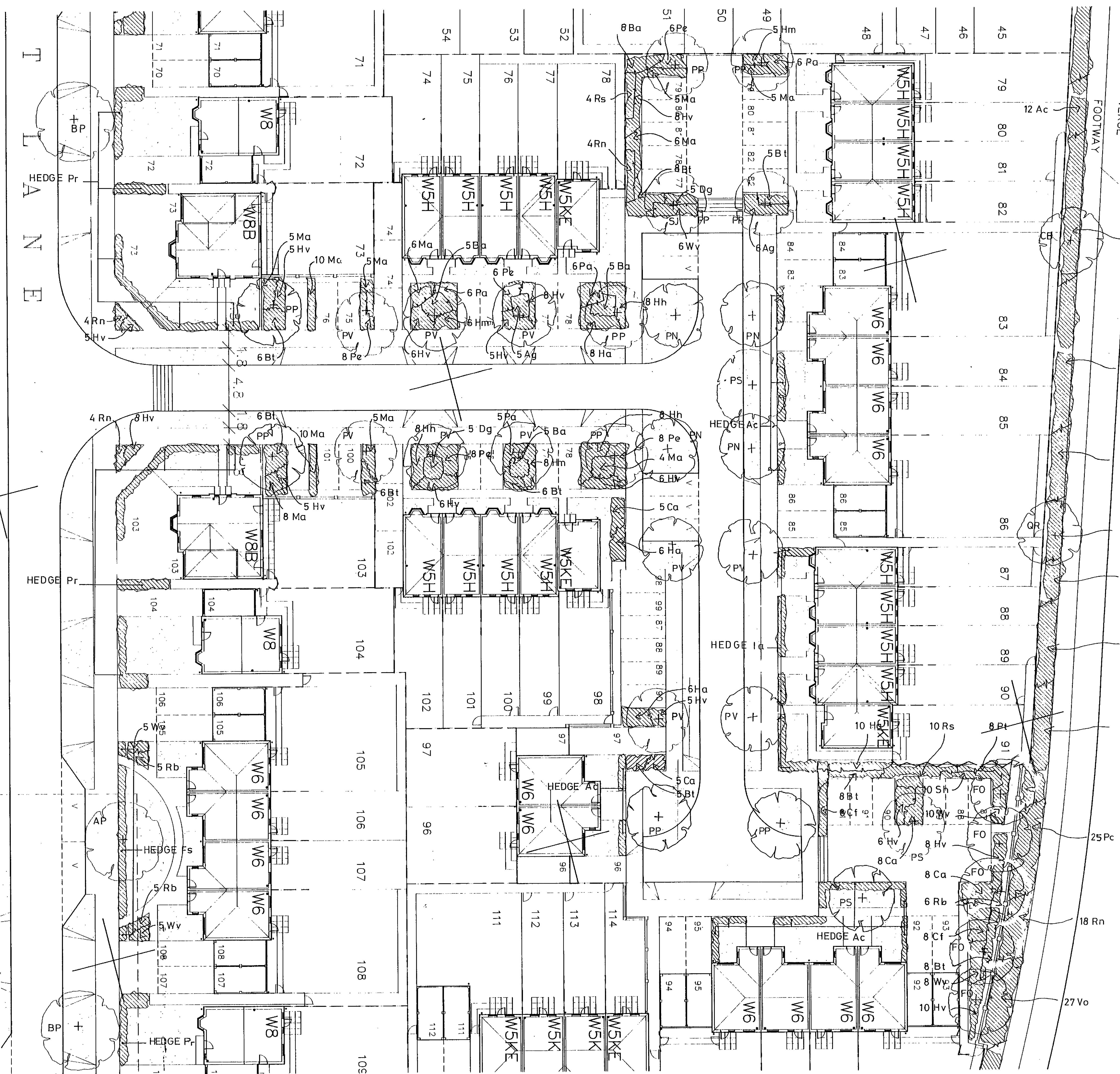
DATE: 04 AUG 1994

PROJECT No.	DRAWING No.	SCALE	DATE
10120	05	1:200	MAR 94

COYNE ASSOCIATES
 LANDSCAPE ARCHITECTS
 STERLING COURT NORTON ROAD STEVENAGE HERTS SG1 2JY
 TELEPHONE: 01308 728326 FAX: 01308 728335



ROAD CLOSURE WORKS AFFECTING BIRDCROFT ROAD



DO NOT SCALE
Report any errors or omissions
Check all dimensions on site prior to commencing the works or preparing any shop drawings.
This drawing is copyright.

NOTES:

PLANT SCHEDULE

PLANT SCHEDULE

TREES

All selected standards (3-3.5m with 10-12cm girth at 1m. above ground) bare rooted stock planted in min. 900 cubic mm pits

REF	SPECIES	NO.
AP	ACER PLATANOIDES 'CRIMSON SENTRY'	
AC	ACER CAPPADOCICUM	
CB	CARPUNUS BETULUS 'FASTIGIATA'	
FO	FRAXINUS OXYCARPA 'RAYWOOD'	
FJ	FRAXINUS EXCELSIOR 'JASPIDEA'	
PN	PRUNUS PDSSARDII 'NIGRA'	
PP	PRUNUS PADUS 'PURPLE QUEEN'	
PS	PRUNUS SUB. 'AUTUMNALIS'	
PV	PRUNUS VIRGINIANA 'SCHUBERT'	
QV	QUERCUS ROBUR 'FASTIGIATA'	

All 1.2m. standards, bare rooted stock planted in min. 900 cubic mm pits

REF	SPECIES	NO.
BP	BETULA PENDULA	

SHRUBS

All container grown in 1.5 to 3.0 litre pot sizes and planted in 450mm soil depth.

REF	SPECIES	NO.
Ac	ACER CAMPESTRE	
Al	AMELANCHIER LAEVIS	
Ag	ABELIA GRANDIFLORA	
Bt	BERBERIS THUN. 'AUREA'	
Ba	BUDDLEIA ALTERNIFOLIA	
Cc	COLLUTEA ARBORESCENS	
Ct	COTINUS COGGYRIA	
Cf	COTONEASTER FRANCHETTI	
Cl	CORYLUS AVELLANA	
Co	CORNUS STOLONIFERA 'FLAVIRAMEA'	
Cp	CRATAEGUS PRUNIFOLIA	
Cs	COTONEASTER SALICIFOLIUS 'FLOCCOSUS'	
Dg	DEUTZIA GRACILIS	
Ea	ELEANUS ANGUSTIFOLIA	
Gs	GENISTA HISPANICA	
Ha	HEBE ALBICANS	
Hv	HEBE ELLIPTICA 'VARIEGATA'	
Hm	HEBE MARJORIE	
Hh	HYPERICUM 'HIDCOTE'	
Ia	ILEX AQUIFOLIUM	
Kj	KERRIA JAPONICA 'PLENIFOLIA'	
Ma	MAHONIA AQUIFOLIUM	
Pa	POTENTILLA 'ABBOTSWOOD'	
Pc	PRUNUS LUSITANICA	
Pe	POTENTILLA 'TILFORD CREAM'	
Pl	RUNUS LUSITANICA	
Pt	PYRACANTHA TETON	
Rd	ROSA 'BLANC DOUBLE DE COUBERT'	
Rn	ROSA 'NEVADA'	
Rs	ROSA 'SARA VAN FLEET'	
Sa	SPIREA AITCHISONII	
Sh	SYMPHORICARPOS X CHENAUILLI 'HANCOCK'	
Vo	VIBURNUM OPULUS	
Vt	VIBURNUM TINUS	
Vr	VIBURNUM RHYTIDOPHYLLUM	
Wv	WEIGELA FLORIDA 'VARIEGATA'	

CLIMBERS

All container grown 2.0 litre pot size with min. 3 leading shoots fixed to canes.

REF	SPECIES	NO.

HEDGES

All 1.2m. whips, bare rooted planted in 450mm deep trench. Plant in two rows 500mm apart, in staggered pattern 3 plants/m.

REF	SPECIES	NO.

Fs	FAGUS SYLVATICA	
Ia	ILEX AQUIFOLIUM	
Pr	PYRACANTHA ROGERSIANA	
Ac/Cm	ACER CAMPESTRE / CRATAEGUS MONOGYNA	

WELWYN HATFIELD COUNCIL

REVISIONS TO PLANTING ALONG OSBORNE WAY AND TO THE TREE SCHEME

6/482/94

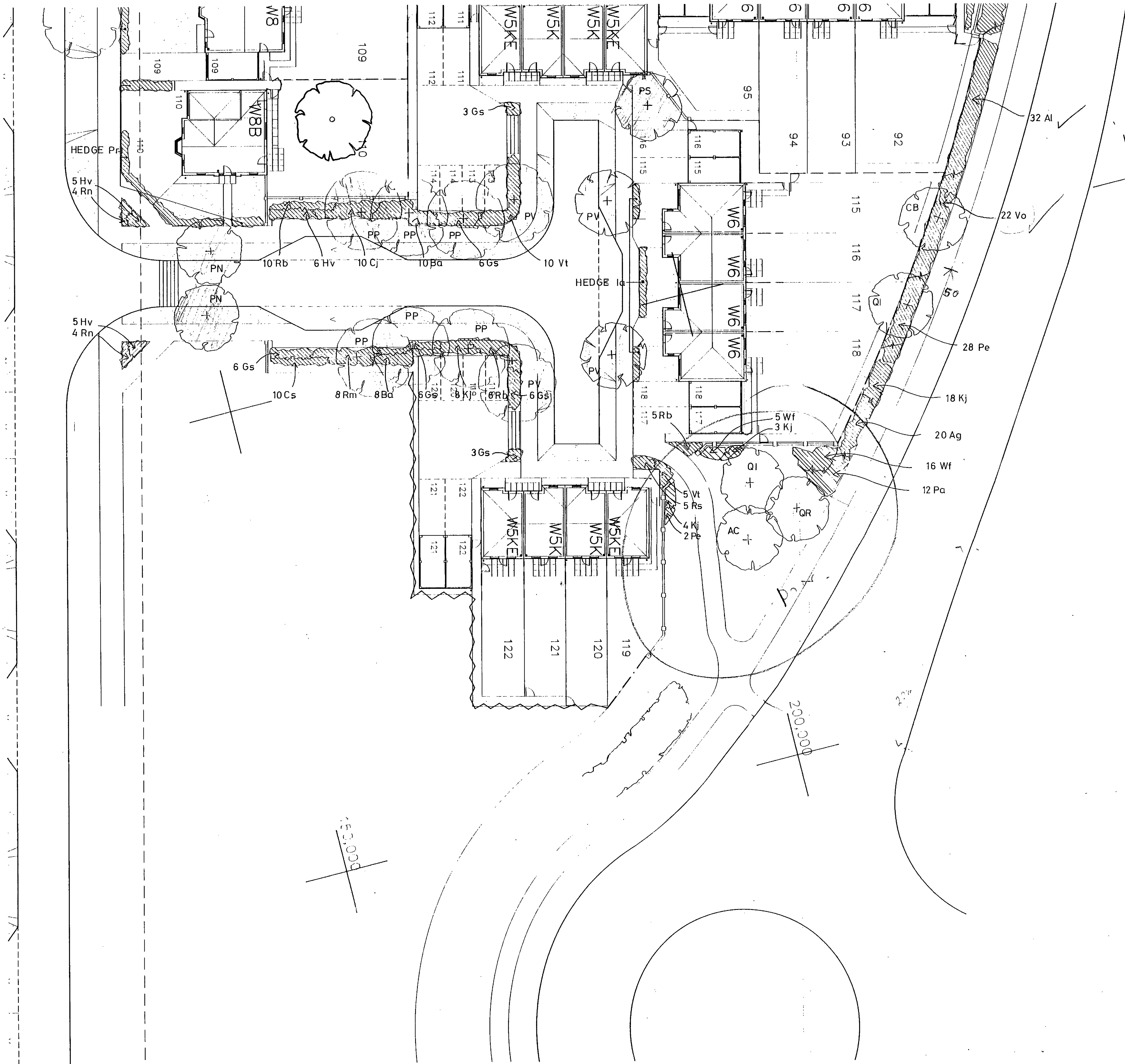
ADMIRAL HOMES
LONGCROFT LANE
WELWYN GARDEN CITY

WELWYN HATFIELD COUNCIL
TOWN & COUNTRY PLANNING ACT 1990
PLAN REFERRED TO IN CONSENT/REF.
DATE: 04 AUG 1994

DRAWING TITLE
PLANTING PLAN

PROJECT No.	DRAWING No.	SCALE	DATE
10120	03	1:200	MAR. 94

COYNE ASSOCIATES
LANDSCAPE ARCHITECTS
51 BERLING COURT, NORTH ROAD, STEVENAGE, HERTS SG1 7JF
TELEPHONE: 0438 728126 FAX: 0438 722135



DO NOT SCALE
 Report any errors or omissions
 Check all dimensions on site prior to commencing the works or preparing any shop drawings.
 This drawing is copyright.

NOTES:

PLANT SCHEDULE

PLANT SCHEDULE

TREES

All selected standards (3-3.5m with 10-12cm girth at 1m. above ground) bare rooted stock planted in min. 900 cubic mm pits

REF	SPECIES	NO.
AP	ACER PLATANOIDES 'CRIMSON SENTRY'	
AC	ACER CAPPADOCICUM	
CB	CARPUNUS BETULUS 'FASTIGIATA'	
FO	FRAXINUS OXYCARPA 'RAYWOOD'	
FJ	FRAXINUS EXCELSIOR 'JASPIDEA'	
PN	PRUNUS PDSSARDII 'NIGRA'	
PP	PRUNUS PADUS 'PURPLE QUEEN'	
PS	PRUNUS SUB. 'AUTUMNALIS'	
PV	PRUNUS VIRGINIANA 'SCHUBERT'	
QI	QUERCUS ROBUR 'FASTIGIATA'	

All 1.2m. standards, bare rooted stock planted in min. 900 cubic mm pits

REF	SPECIES	NO.
BP	BETULA PENDULA	

SHRUBS

All container grown in 1.5 to 3.0 litre pot sizes and planted in 450mm soil depth.

REF	SPECIES	NO.
Ac	ACER CAMPESTRE	
Al	AMELANCHIER LAEVIS	
Ag	ABELIA GRANDIFLORA	
Bt	BERBERIS THUN. 'AUREA'	
Ba	BUDDLEIA ALTERNIFOLIA	
Ca	COLLUTEA ARBORESCENS	
Cc	COTINUS COGGYGRIA	
Cf	COTONEASTER FRANCHETTI	
Ci	CORYLUS AVELLANA	
Co	CORNUS STOLONIFERA 'FLAVIRAMEA'	
Cp	CRATAEGUS PRUNIFOLIA	
Cs	COTONEASTER SALICIFOLIUS 'FLOCCOSUS'	
Dg	DELUTZIA GRACILIS	
Ea	ELEAGNUS ANGUSTIFOLIA	
Gs	GENISTA HISPANICA	
Ha	HEBE ALBICANS	
Hv	HEBE ELLIPTICA 'VARIEGATA'	
Hm	HEBE MARJORIE	
Hh	HYPERICUM 'HIDCOTE'	
Ia	ILEX AQUIFOLIUM	
Kj	KERRIA JAPONICA 'PLENIFOLIA'	
Ma	MAHONIA AQUIFOLIUM	
Pa	POTENTILLA 'ABBOTSWOOD'	
Pc	PRUNUS LUSITANICA	
Pe	POTENTILLA 'TILFORD CREAM'	
Pl	RUNUS LUSITANICA	
Pl	PYRACANTHA TETON	
Rb	ROSA 'BLANC DOUBLE DE COUBERT'	
Rn	ROSA 'NEVADA'	
Rs	ROSA 'SARA VAN FLEET'	
Sa	SPIREA AITCHISONII	
Sh	SYMPHORICARPOS X CHENAULTII 'HANCOCK'	
Vo	VIBURNUM OPULUS	
Vt	VIBURNUM TINUS	
Vr	VIBURNUM RHYTIDOPHYLLUM	
Ww	WEIGELA FLORIDA 'VARIEGATA'	

CLIMBERS

All container grown 2.0 litre pot size with min. 3 leading shoots fixed to canes.

REF	SPECIES	NO.
-----	---------	-----

HEDGES

All 1.2m. whips, bare rooted planted in 450mm deep trench. Plant in two rows 500mm apart, in staggered pattern 3 plants/m.

REF	SPECIES	NO.
Fs	FAGUS SYLVATICA	
Ia	ILEX AQUIFOLIUM	
Pr	PYRACANTHA ROGERSIANA	
Ac/Cm	ACER CAMPESTRE / CRATAEGUS MONOGYNA	

B: REVISIONS TO PLANTING ALONG OSBOURNE WAY AND TO THE TREE SCHEME 8/94 VF

ADDITIONAL PLANTING 4/94

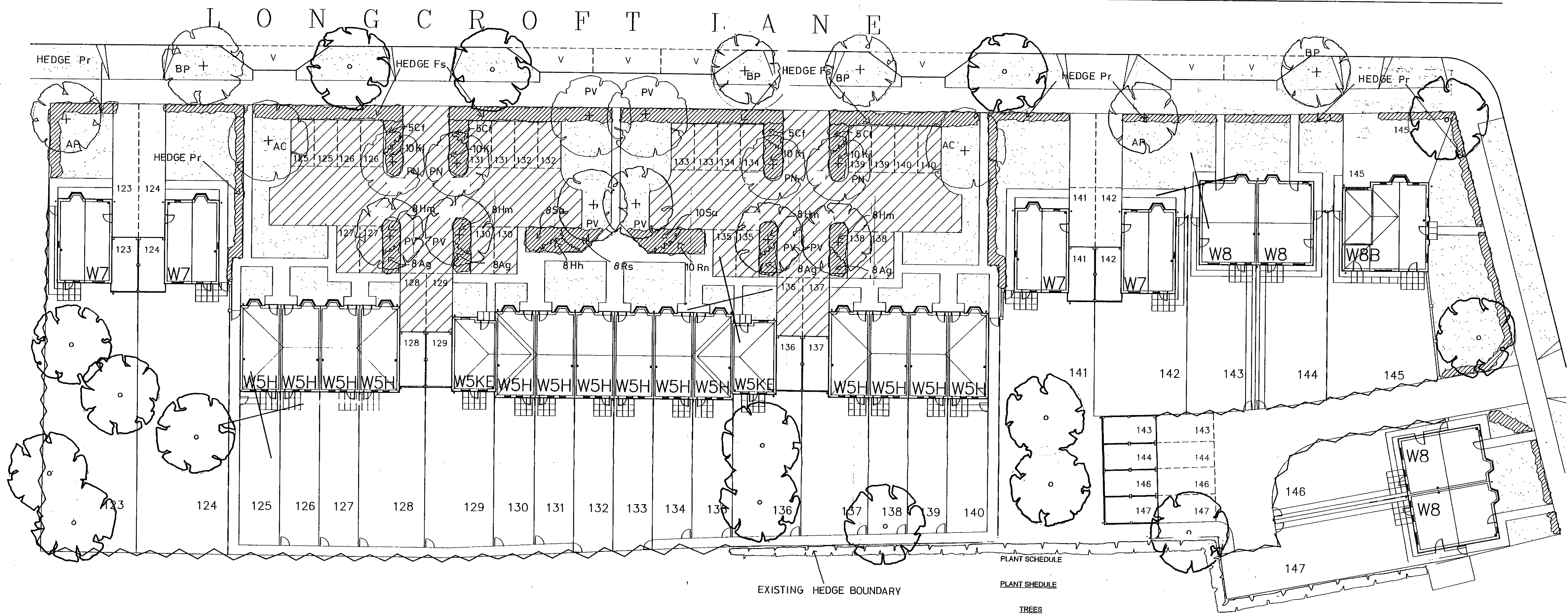
PROJECT TITLE: ADMIRAL HOMES LONGCROFT LANE WELWYN GARDEN CITY

DATE: 08 JUL 1994

DRAWING NO: **N 6/482/94**

PLANTING PLAN

DO NOT SCALE
 Report any errors or omissions
 Check all dimensions on site prior to commencing the works or preparing any shop drawings.
 This drawing is copyright.
 NOTES:



REF	SPECIES	NO.
Ia	ILEX AQUIFOLIUM	
Kj	KERRIA JAPONICA 'PLENIFOLIA'	
Ma	MAHONIA AQUIFOLIUM	
Pa	POTENTILLA 'ABBOTSWOOD'	
Pc	PRUNUS LUSITANICA	
Pe	POTENTILLA 'TIL FORD CREAM'	
Pl	RUNJUS LUSITANICA	
Pt	PYRACANTHA TETON	
Rb	ROSA 'BLANC DOUBLE DE COUBERT'	
Rn	ROSA 'NEVADA'	
Rs	ROSA 'SARA VAN FLEET'	
Sa	SPIREA AITCHISONII	
Sh	SYMPHORICARPOS X CHENAULTII 'HANCOCK'	
Vo	VIBURNUM OPULUS	
Vt	VIBURNUM TINUS	
Vr	VIBURNUM RHYTIDOPHYLLUM	
Wv	WEIGELA FLORIDA 'VARIEGATA'	

CLIMBERS

All container grown 2.0 litre pot size with min. 3 leading shoots fixed to canes.

REF	SPECIES	NO.

HEDGES

All 1.2m. whips, bare rooted planted in 450mm deep trench. Plant in two rows 500mm apart, in staggered pattern 3 plants/m.

REF	SPECIES	NO.
Fs	FAGUS SYLVATICA	
Ia	ILEX AQUIFOLIUM	
Pr	PYRACANTHA ROGERSIANA	
Ac/Cm	ACER CAMPESTRE / CRATAEGUS MONOGYNA	

All selected standards [3-3.5m with 10-12cm girth at 1m. above ground] bare rooted stock planted in min. 900 cubic mm pits

REF	SPECIES	NO.
AP	ACER PLATANOIDES 'CRIMSON SENTRY'	
AC	ACER CAPPADOCIUM	
CB	CARPINUS BETULUS 'FASTIGIATA'	
FO	FRAXINUS OXYCARPA 'RAYWOOD'	
FJ	FRAXINUS EXCELSIOR 'ASPIDEA'	
PN	PRUNUS PDSARDII 'NIGRA'	
PP	PRUNUS PADUS 'PURPLE QUEEN'	
PS	PRUNUS SUB. 'AUTUMNALIS'	
PV	PRUNUS VIRGINIANA 'SCHUBERT'	
QI	QUERCUS ROBUR 'FASTIGIATA'	

All 1.2m. standards, bare rooted stock planted in min. 900 cubic mm pits

REF	SPECIES	NO.
BP	BETULA PENDULA	

SHRUBS

All container grown in 1.5 to 3.0 litre pot sizes and planted in 450mm soil depth.

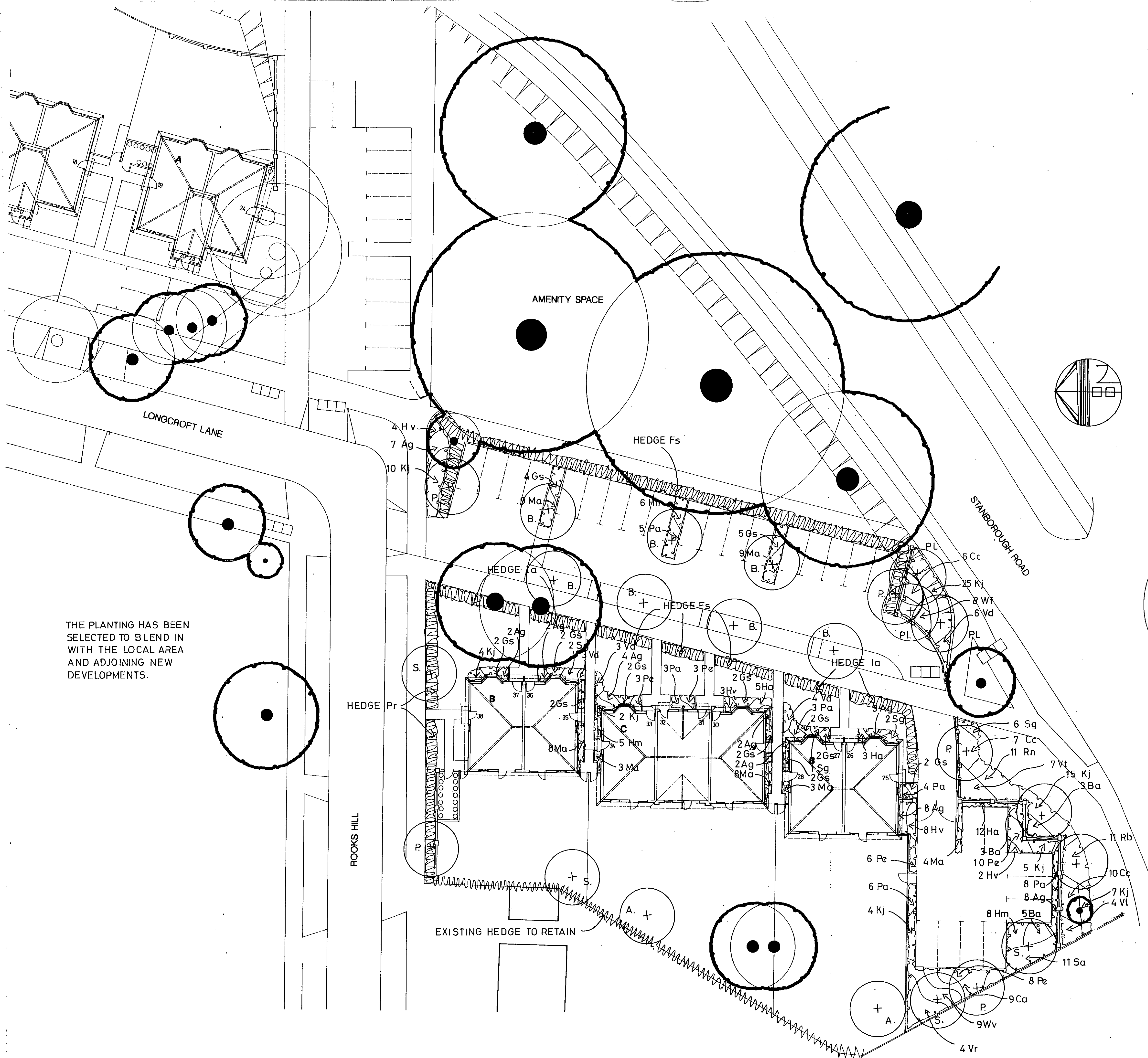
REF	SPECIES	NO.
Ac	ACER CAMPESTRE	
Al	AMELANCHIER LAEVIS	
Ag	ABELIA GRANDIFLORA	
Bt	BERBERIS THUN. 'AUREA'	
Ba	BUDDLEIA ALTERNIFOLIA	
Ca	COLLUTEA ARBORESCENS	
Cc	COTINUS COGGYRIA	
Cf	COTONEASTER FRANCHETTI	
Cl	CORYLUS AVELLANA	
Co	CORNUS STOLONIFERA 'FLAVIRAMEA'	
Cp	CRATAEGUS PRUNIFOLIA	
Cs	COTONEASTER SALICIFOLIUS 'FLOCCOSUS'	
Dg	DEUTZIA GRACILIS	
Ea	ELEAGNUS ANGUSTIFOLIA	
Gs	GENISTA HISPANICA	
Ha	HEBE ALBICANS	
Hv	HEBE ELLIPTICA 'VARIEGATA'	
Hm	HEBE MARJORIE	
Hh	HYPERICUM 'HIDCOTE'	

WELWYN HATFIELD COUNCIL
 TOWN & COUNTRY PLANNING ACT 1990
 PLAN REFERRED TO IN CONSENT/REG/000000
 DATE: 04 AUG 1994

WELWYN HATFIELD COUNCIL
 RECEIVED 08 JUL 1994
 N6/482/94

B: REVISIONS TO PLANTING ALONG OSBOURNE WAY AND TO THE TREE SCHEME
 A: ADDITIONAL PLANTING 4/94
 PROJECT TITLE
 ADMIRAL HOMES
 LONGCROFT LANE
 WELWYN GARDEN CITY
 DRAWING TITLE
 PLANTING PLAN

PROJECT No. 10120 DRAWING No. 01 SCALE 1:200 DATE MAR. 94 DRAWN V.F.
COYNE ASSOCIATES
 LANDSCAPE ARCHITECTS
 STERLING COURT NORTON ROAD STEVENAGE HERTS SG1 2JY
 TELEPHONE: 0438 728326 FAX: 0438 722035



THE PLANTING HAS BEEN SELECTED TO BLEND IN WITH THE LOCAL AREA AND ADJOINING NEW DEVELOPMENTS.

PLANT SCHEDULE

TREES

All selected standards [3-3.5m with 10-12cm girth at 1m. above ground] bare rooted stock planted in min. 900 cubic mm pits

REF	SPECIES	NO.
A	ACER PLATANOIDES	
F	FRAXINUS OXYCARPA 'RAYWOOD'	
O	POPULUS ITALICA	
P	PRUNUS SUB. AUTUMNALIS	

All 1.2M. standards, bare rooted stock planted in min. 900 cubic mm pits

REF	SPECIES	NO.
B	BETULA PENDULA	

SHRUBS

All container grown in 1.5 to 3.0 litre pot sizes and planted in 450mm soil depth.

REF	SPECIES	NO.
Ac	ACER CAMPESTRE	
Ag	ABELIA GRANDIFLORA	
Al	AMELANCHIER LAEVIS	
Bt	BERBERIS THUM. 'AUREA'	
Ca	COLUTEA ARBORESCENS	
Cc	COTINUS COGGYGRIA	
Cl	CORYLUS AVELLANA	
Cp	CRATAEGUS PRUNIFOLIA	
Ea	ELEAGNUS ANGUSTIFOLIA	
Gs	GENISTA HISPANICA	
Ha	HEBE ALBICANS	
Hv	HEBE ELLIPTICA VARIEGATA	
Hm	HEBE MARJORIE	
Hh	HYPERICUM HIDCOTE	
Ia	ILEX AQUIFOLIUM	
Kj	KERRIA JAPONICA	
Ma	MAHONIA AQUIFOLIUM	
Pa	POTENTILLA ABBOTSWOOD	
Pe	POTENTILLA TILFORD CREAM	
Rn	ROSA NEVADA	
Rb	ROSA BLANC. DOUBLE DE COURBERT	
Sg	SENECIO GREYII	
Sa	SPIREA AITCHISONII	
Vo	VIBURNUM OPIULUS	
Vr	VIBURNUM RHYTIDOPHYLLUM	
Vt	VIBURNUM TINUS	
Vd	VIBURNUM DAVIDII	
Wg	WEIGELIA FLORIDA VARIEGATA	

CLIMBERS

All container grown 2.0 litre pot size with min. 3 leading shoots fixed to canes.

REF	SPECIES	NO.
PI	PARTHENOCISSUS TRICUSP. VEITCHII	

HEDGES

Plant in two rows 500mm apart, in staggered pattern 3 plants/m.

REF	SPECIES	NO.
Fs	FAGUS SILVATICA	
Pr	PYRACANTHA ROGERSIANA	

NOTE: hedges to be kept clipped at 1600mm. height

SCALE COPY

08 JUL 1994
N6/482/94

WELWYN HATFIELD COUNCIL
TOWN & COUNTRY PLANNING ACT 1990
PLAN REFERRED TO IN CONSENT
DATE 04 AUG 1994

A: REVISIONS TO PLANTING ALONG OSBOURNE WAY AND TO THE TREE SCHEME
694 VF

PROJECT TITLE
HOUSING AT LONGCROFT LANE
WELWYN GARDEN CITY HERTS

DRAWING TITLE
PLANTING PLAN

PROJECT No.	DRAWING No.	SCALE	DATE
10114	02	1:200	3/94

COYNE ASSOCIATES
LANDSCAPE ARCHITECTS
STERLING COURT NORTON ROAD STEVENAGE HERTS SG1 2JY
TELEPHONE: 0438 728226 FAX: 0438 722033