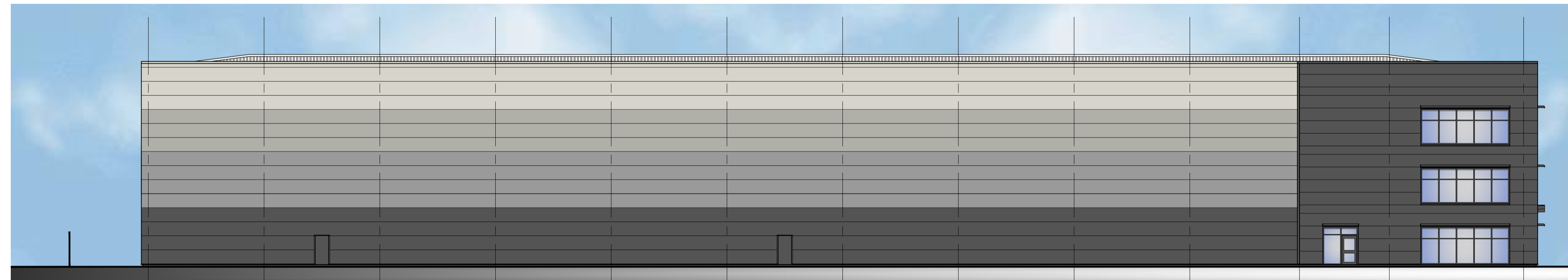
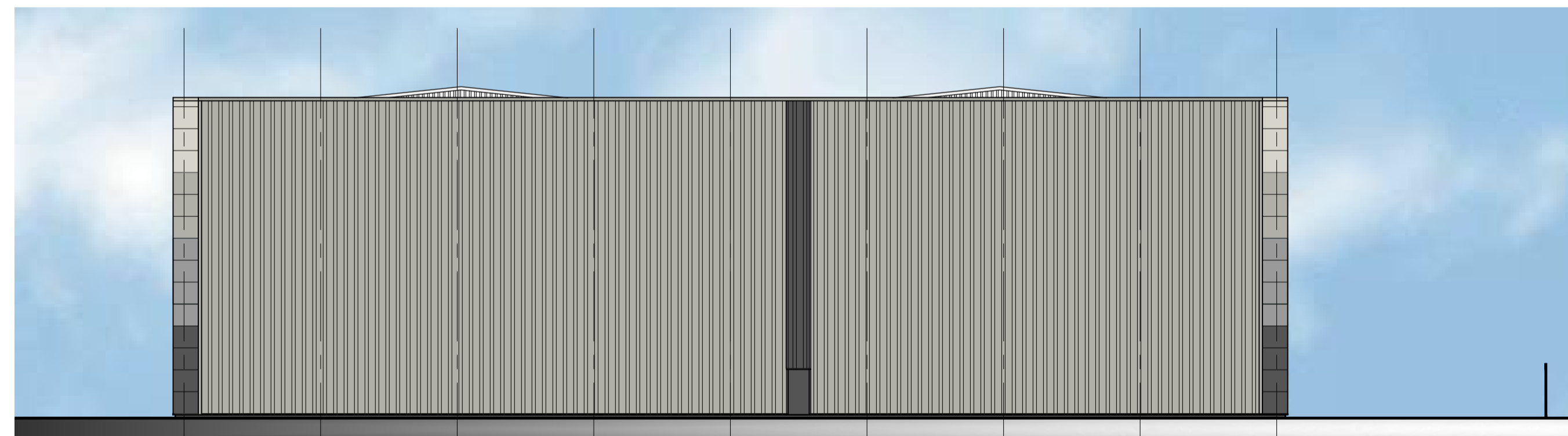


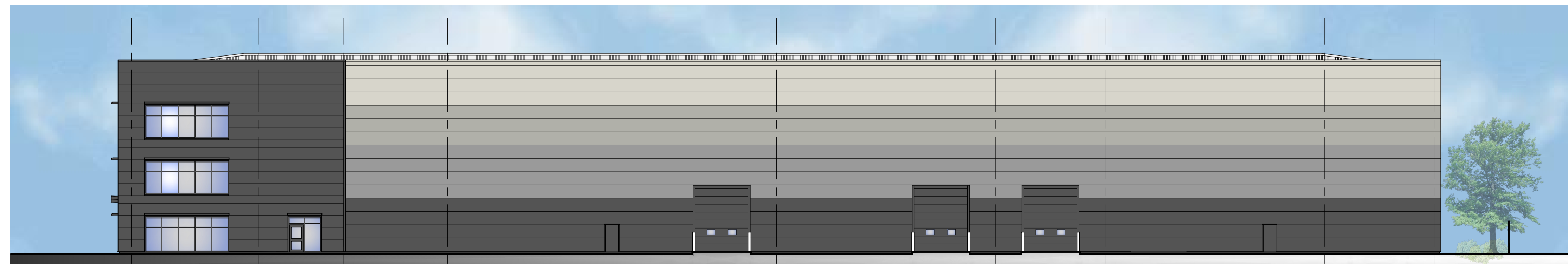
South Elevation
(Front Elevation)



West Elevation
(Side Elevation)

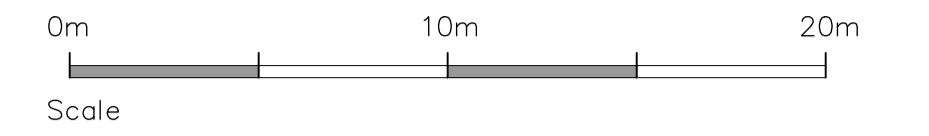


North Elevation
(Rear Elevation)



East Elevation
(Side Elevation)

notes
this drawing and design is the copyright of aja architects llp and must not be reproduced in part or in whole without prior written consent. contractors must verify all dimensions on site before commencing work or preparing shop drawings if in doubt ASK.
Where this drawing contains any Ordnance Survey mapping material, it has been reproduced under license number 100052278.
Ordnance Survey © Crown copyright



Schedule of Materials

Offices Elevation

- 1 - Preformed Flat Composite Cladding to projecting building outline, Colour - Anthracite RAL 7016
- 2 - Flat Horizontal Composite Cladding, Colour - Anthracite RAL 7016
- 3 - Flat Horizontal Composite Cladding System to Front Elevation, Colour - Merlin Grey RAL 180 40 05
- 5 - Polyester Powder Coated Aluminium DG Windows
Curtain Walling & Doors, Frame Colour - Anthracite RAL 7016
- 6 - Glazed Entrance Canopy, Colour - Anthracite RAL 7016
- 7 - Polyester Powder Coated Brise Soleil Colour - Anthracite RAL 7016
- 8 - External Louvres - Colour to match cladding

Side Elevations - Warehouse (low to high horizontally spanning panels)

- 9 - Microrib composite panel - Colour Dark Grey Anthracite RAL 7016
- 10 - Microrib composite panel - Colour Merlin grey RAL 180 40 05
- 11 - Microrib composite panel - Colour Goosewing Grey RAL 7038
- 12 - Microrib composite panel - Colour Grey White/Hamlet RAL 9002

Rear Elevation - Warehouse

- 13 - Vertically Spanning Built Up Trapezoidal Cladding
Colour: Goosewing Grey RAL 7038 & Anthracite RAL 7016
- 14 - Built up Roof Cladding Colour - Albatross RAL 240 80 05
- 15 - Painted Steel FE Doors - Anthracite RAL 7016
- 16 - Insulated electrically operated Loading Doors
Colour - Anthracite RAL 7016

| no. | date | revision | by |
|-----|------|----------|----|
|-----|------|----------|----|



aja architects llp
1170 Elliott Court
Herald Avenue
Coventry Business Park
COVENTRY CV5 6UB
T: 024 7625 3200
F: 024 7625 3210
E: aja@aja-architects.com
W: www.aja-architects.com

aja architects llp is a limited liability partnership registered in England No. OC326721

client



project

Proposed Unit
Plot 5000
Hatfield Business Park

drawing

Proposed Elevations

scale 1:200 @ A1 drawn up

checked aro date 31/07/17

no

6050 - 104