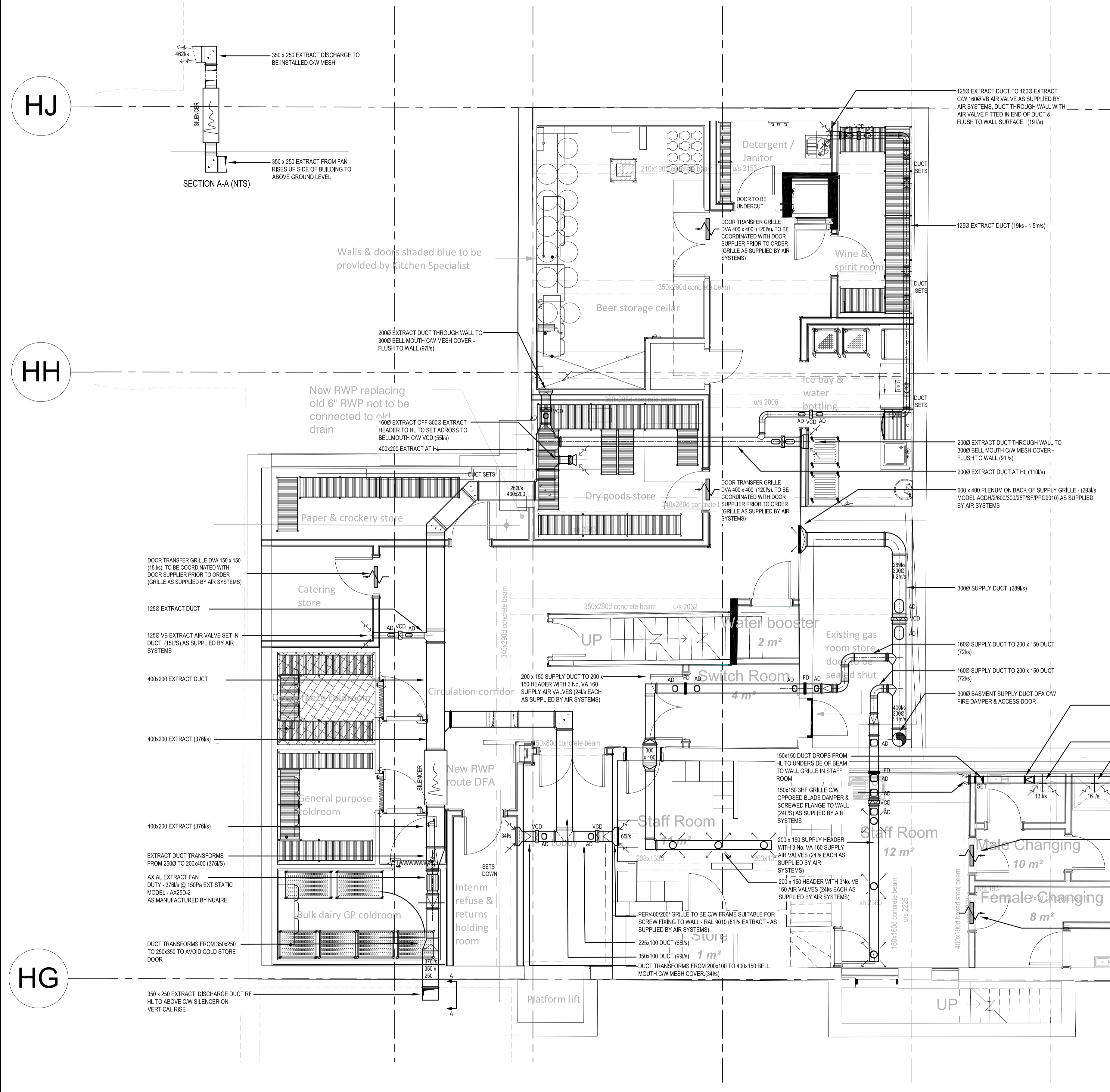
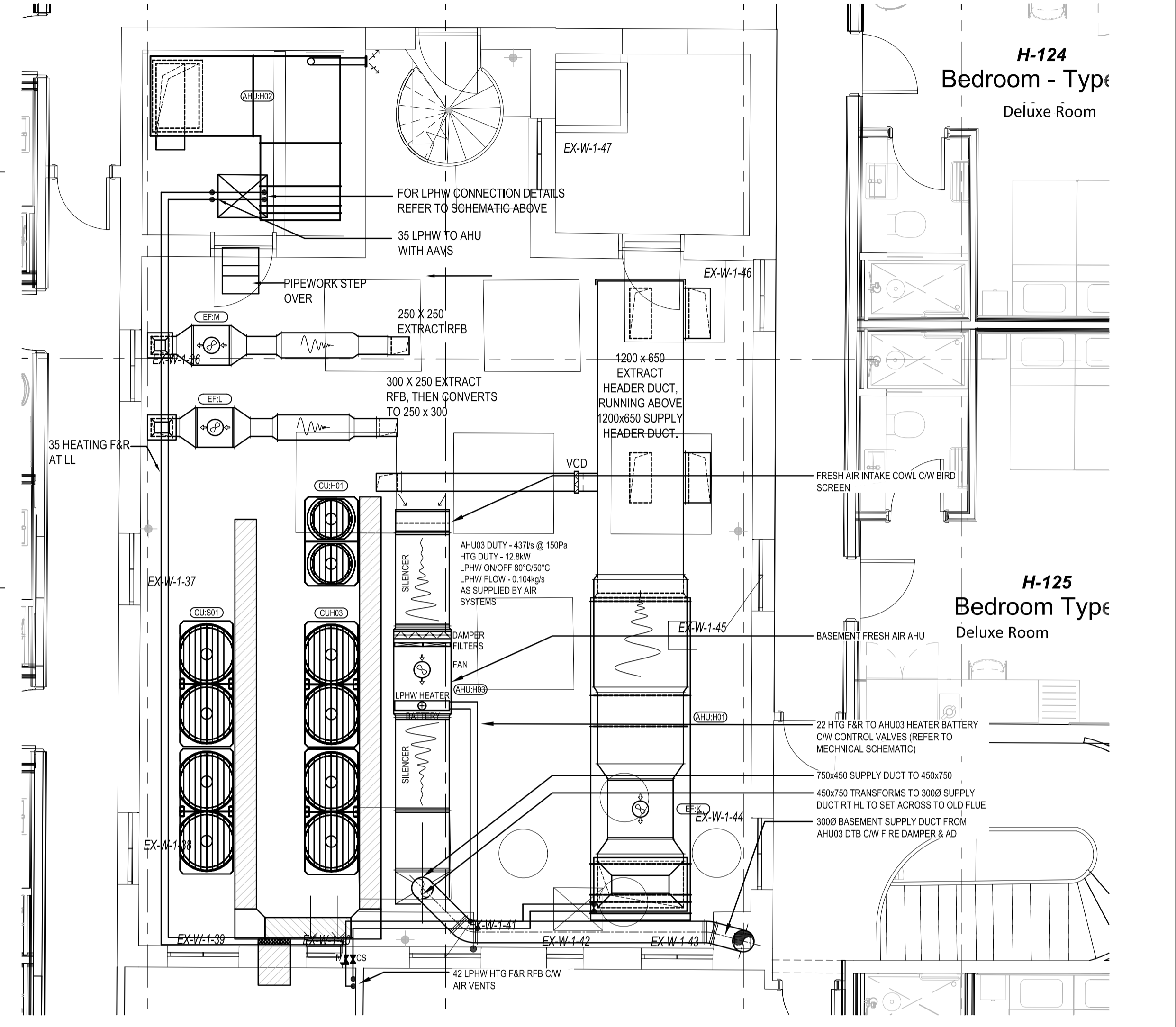


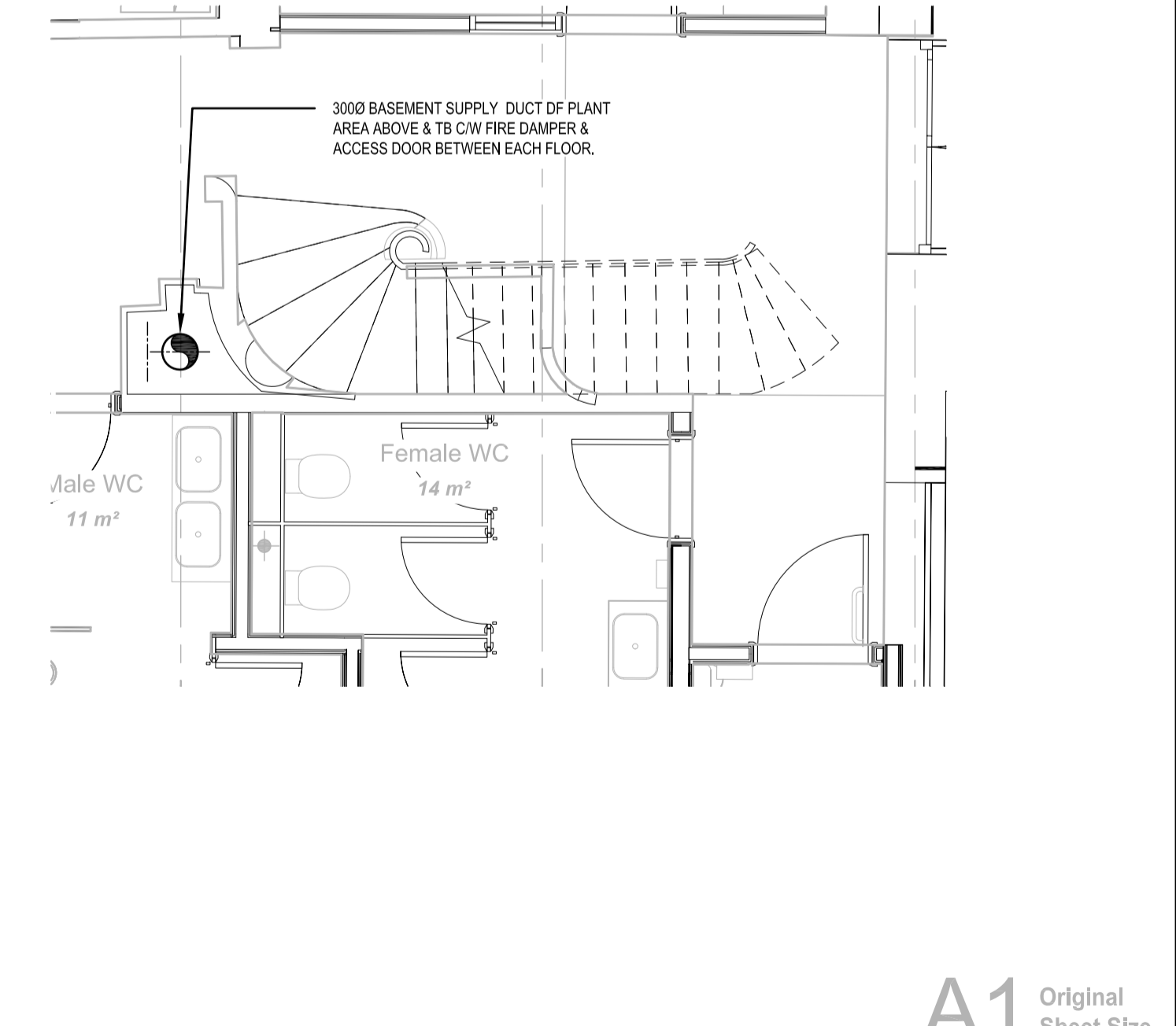
PROPOSED BASEMENT VENT LAYOUT



BASEMENT VENT 1ST FLOOR LAYOUT



BASEMENT VENT GF LAYOUT



- NOTES:**
- FIRE DAMPERS / COLLARS FITTED TO ALL PENETRATIONS OF FIRE COMPARTMENTS TO MAINTAIN INTEGRITY.
 - WINDOW HEAD LOUVRES ARE SUPPLIED AS PART OF THE WINDOW PACKAGE. WBS WILL LIAISE WITH THE LOUVER SUPPLIER TO AGREE CONNECTION AND WEATHERPROOFING DETAILS. NON-ACTIVE PARTS OF THE LOUVER SHALL BE INSULATED BY OTHERS TO THE REQUIRED U-VALUE.
 - NOISE LEVELS TO BE AS REQUIRED ON THE ROOM DATA SHEET.
 - ACCESS REQUIRED TO ALL VCDs AND FDs.
 - WHERE SERVICES ARE EXPOSED, INSULATION TO BE SUITABLE FOR PAINTED COLOURED FINISH, ENSURING VAPOUR SEAL IS MAINTAINED.
 - ALL MVHR EQUIPMENT TO BE ELECTRICALLY SUPPLIED AND CONTROLLED (BMS) FROM THE MECHANICAL PANEL.

REV	DESCRIPTION	CHKD	DATE
P4	BASEMENT VENT ADDED TO KITCHEN SPECIALIST REQ'MENTS	BMcC	12.04.19
P3	DUCTWORK, ADDED TO REFLECT KITCHEN REQUIREMENTS	ALH	20.12.18
P2	DUCTWORK, SIZES FLOW RATES GRILLES & FAN DETAILS ADDED	ALH	20.12.18
P1	PRELIMINARY ISSUE	ALH	03.12.18
REV	DESCRIPTION	CHKD	DATE

WHITEHEAD
Lanyon House, Mission Court, Newport NP20 2DW
t: 01633 242450 f: 01633 242451 www.whiteheads.co.uk

MAIN CONTRACTOR:
ISG plc
St Paul's Place, 40 St Paul's Square,
Birmingham B3 1FQ

Management and Engineering Services Limited
SUITE 1 & 2 2ND FLOOR, 87 BRIDGE HIGH STREET
WALSLEY, GREETOT, S64 1WH
Tel: 01275 851100 Fax: 01275 851144
email: eng@amberman.co.uk

SCALE: 1:50@A1
DATE: DEC 2018
ENGINEER: ALH
DRAWN: AK

CHECKED: OA
AMBER
PROJECT No: B2713

TITLE:
COMET HOTEL, HATFIELD
RETAINED HOTEL, BASEMENT
MECHANICAL SERVICES
VENTILATION LAYOUT

DRAWING No: COMET WBS OH B1 DR M SS55 2800 D3 P4

PROJECT REF ORIGINATOR VOL LEVEL TYPE ROLE CLASS NUMBER SUIT REV

PLOT DATE: 12.4.2019

A1 Original Sheet Size