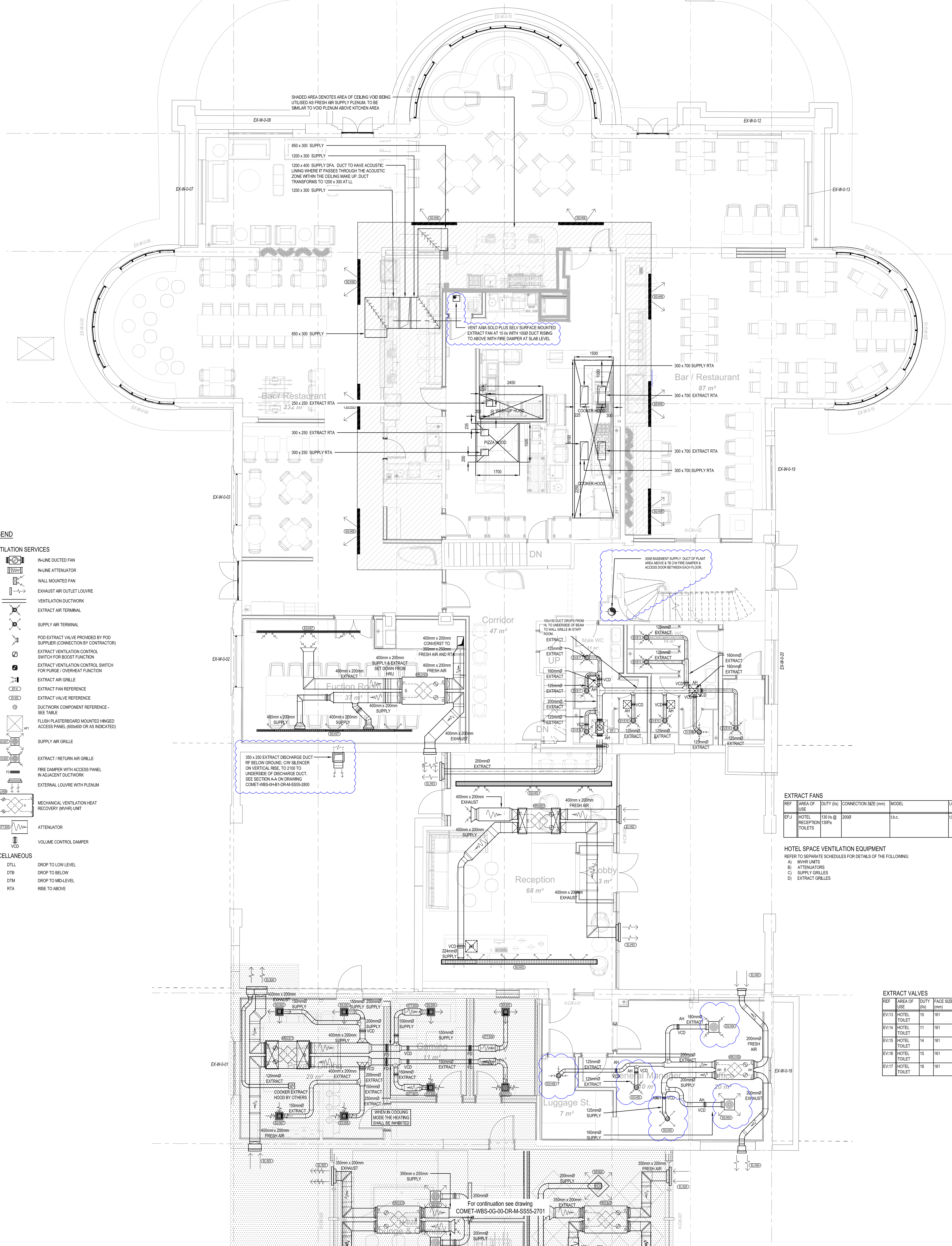


FIRE COMPARTMENTATION TO BE CONFIRMED



- LEGEND**
- VENTILATION SERVICES**
- INLINE DUCTED FAN
 - INLINE ATTENUATOR
 - WALL MOUNTED FAN
 - EXHAUST AIR OUTLET LOUVRE
 - VENTILATION DUCTWORK
 - EXTRACT AIR TERMINAL
 - SUPPLY AIR TERMINAL
 - ROD EXTRACT VALVE PROVIDED BY POD SUPPLIERS (CONNECTION BY CONTRACTOR)
 - EXTRACT VENTILATION CONTROL SWITCH FOR BOOST FUNCTION
 - EXTRACT VENTILATION CONTROL SWITCH FOR PURGE / OVERHEAT FUNCTION
 - EXTRACT AIR GRILLE
 - EXTRACT FAN REFERENCE
 - EXTRACT VALVE REFERENCE
 - DUCTWORK COMPONENT REFERENCE - SEE TABLE
 - FLUSH PLASTERBOARD MOUNTED HINGED ACCESS PANEL (600x600 OR AS INDICATED)
 - SUPPLY AIR GRILLE
 - EXTRACT / RETURN AIR GRILLE
 - FIRE DAMPER WITH ACCESS PANEL IN ADJACENT DUCTWORK
 - EXTERNAL LOUVRE WITH PLENUM
 - MECHANICAL VENTILATION HEAT RECOVERY (MVHR) UNIT
 - ATTENUATOR
 - VOLUME CONTROL DAMPER
- MISCELLANEOUS**
- DTL DROP TO LOW LEVEL
 - DTB DROP TO BELOW
 - DTM DROP TO MID-LEVEL
 - RTA RISE TO ABOVE

EXTRACT FANS

REF	AREA OF USE	DUTY (l/s)	CONNECTION SIZE (mm)	MODEL	LOUVRE	COMMENTS
EPJ1	HOTEL RECEPTION TOILETS	130 l/s @ 10Pa	200	l.b.c.	l.b.c.	BY AIR SYSTEMS

HOTEL SPACE VENTILATION EQUIPMENT
REFER TO SEPARATE SCHEDULES FOR DETAILS OF THE FOLLOWING:

- A) MVHR UNITS
- B) ATTENUATORS
- C) SUPPLY GRILLES
- D) EXTRACT GRILLES

EXTRACT VALVES

REF	AREA OF USE	DUTY (l/s)	FACE SIZE (mm)	NECK SIZE (mm)	MODEL	COMMENTS
EV-13	HOTEL TOILET	10	161	125	VB	BY AIR SYSTEMS
EV-14	HOTEL TOILET	11	161	125	VB	BY AIR SYSTEMS
EV-15	HOTEL TOILET	14	161	125	VB	BY AIR SYSTEMS
EV-16	HOTEL TOILET	15	161	125	VB	BY AIR SYSTEMS
EV-17	HOTEL TOILET	16	161	125	VB	BY AIR SYSTEMS

- NOTES**
1. FIRE DAMPERS / COLLARS FITTED TO ALL PENETRATIONS OF FIRE COMPARTMENTS TO MAINTAIN INTEGRITY.
 2. WINDOW HEAD LOUVRES ARE SUPPLIED AS PART OF THE WINDOW PACKAGE. WBS WILL LAISE WITH THE LOUVRE SUPPLIER TO AGREE CONNECTION AND WEATHERPROOFING DETAILS. NON-ACTIVE PARTS OF THE LOUVRE SHALL BE INSULATED BY OTHERS TO THE REQUIRED U-VALUE.
 3. NOISE LEVELS TO BE AS REQUIRED ON THE ROOM DATA SHEET.
 4. ACCESS REQUIRED TO ALL VCDs AND FDS.
 5. WHERE SERVICES ARE EXPOSED, INSULATION TO BE SUITABLE FOR PAINTED COLOURED FINISH ENSURING VAPOUR SEAL IS MAINTAINED.
 6. ALL MVHR EQUIPMENT TO BE ELECTRICALLY SUPPLIED AND CONTROLLED (BMS) FROM THE MECHANICAL PANEL.

NO	DESCRIPTION	CHKD	DATE
P5	JANITORS STORE EXTRACT ADDED & OFFICE GRILLES ALTERED. BASEMENT VENTILATION DUCTWORK SHOWN	BM/C	18.04.19
P4	VENTILATION SERVICES ADDED TO FUNCTION ROOM	ALH	11.01.19
P3	BAR/RESTAURANT AREA PROPOSED VENTILATION LAYOUT ADDED	ALH	11.01.19
P2	RECEPTION VENTILATION REVISED TO UTILISE CURTAIN WALL LOUVRES. OFFICE VENT LOUVRES REVISED. TOILET VENTILATION REVISED.	ALH	21.12.18
P1	PRELIMINARY ISSUE	ALH	28.11.18
REV	DESCRIPTION	CHKD	DATE

WHITEHEAD
LONDON OFFICE: 100 BROADWAY, LONDON EC4A 3DF
020 7323 2424 | 011633 242451 | www.whitehead.co.uk

MAIN CONTRACTOR:
ISO plc
St Paul's Place, 40 St Paul's Square,
Birmingham B3 1FQ

Management and Engineering Services Limited
SUFFOLK ROAD, STURTON, LINCOLNSHIRE LN9 7JH
TEL: 01509 811000 | FAX: 01509 811004
www.mes-engineering.co.uk

SCALE: 1:500/A0
DATE: NOV 2018
ENGINEER: ALH
DRAWN: AK

CHECKED: []
DATE: []
PROJECT NO: B2713

TITLE:
COMET HOTEL, HATFIELD
RETAINED HOTEL, LEVEL 00
MECHANICAL SERVICES
VENTILATION LAYOUT

DRAWING NO: []
PROJECT REF: []
ORIGINATOR: []
VOL: []
LEVEL: []
TYPE: []
ROLE: []
CLASS: []
NUMBER: []
SUB: []
REV: []

COMET WBS OH 00 DR M SS55 2801 03 P5

PLT DATE: 14.12.19