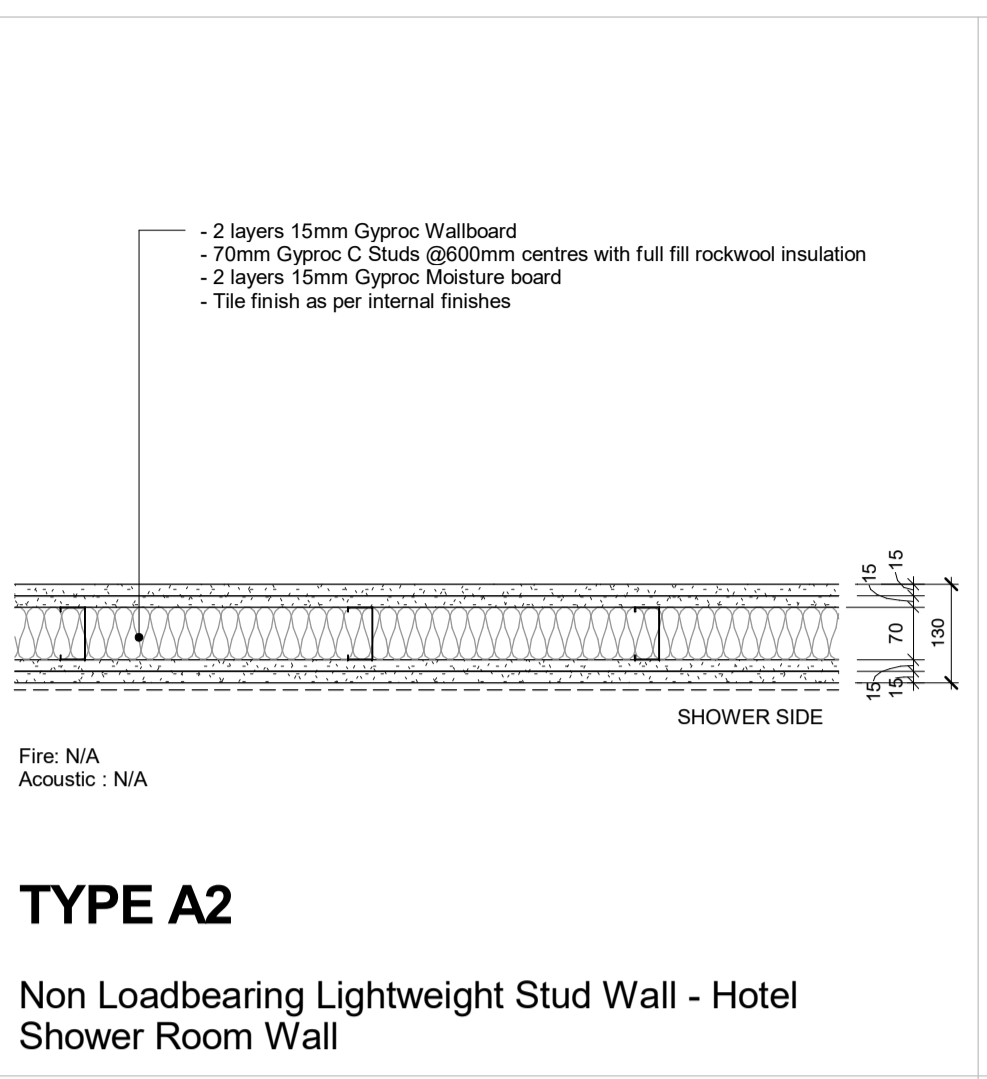
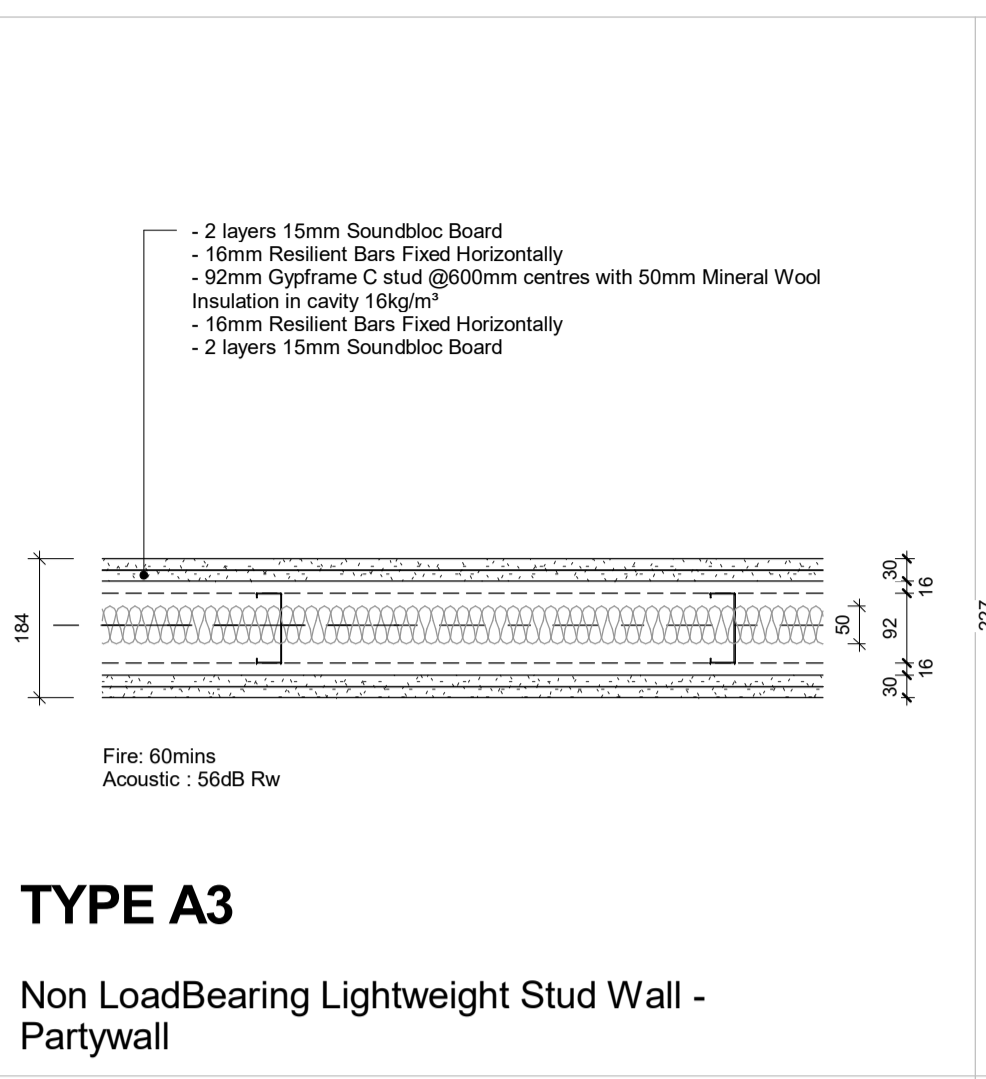


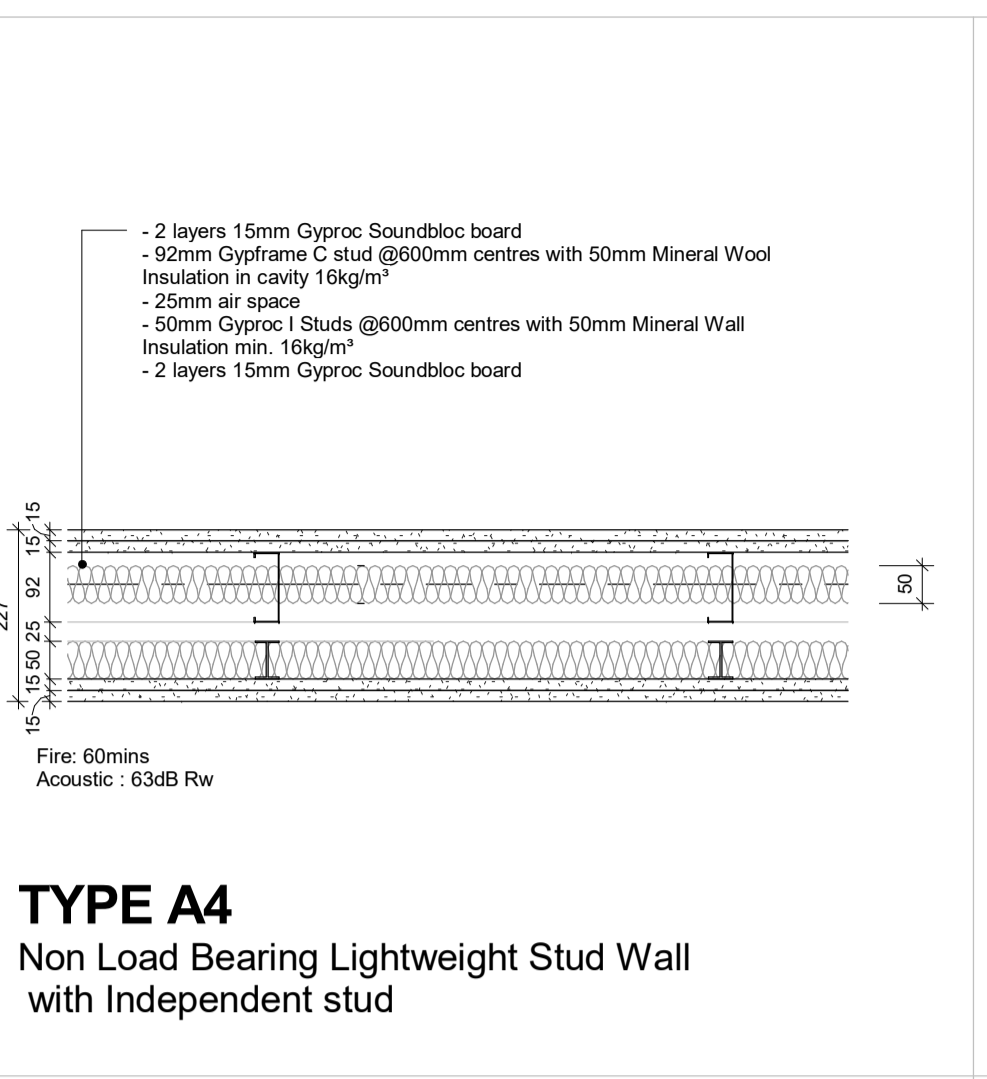
TYPE A1
Non Loadbearing Lightweight Stud Wall - To back of spandrel panel



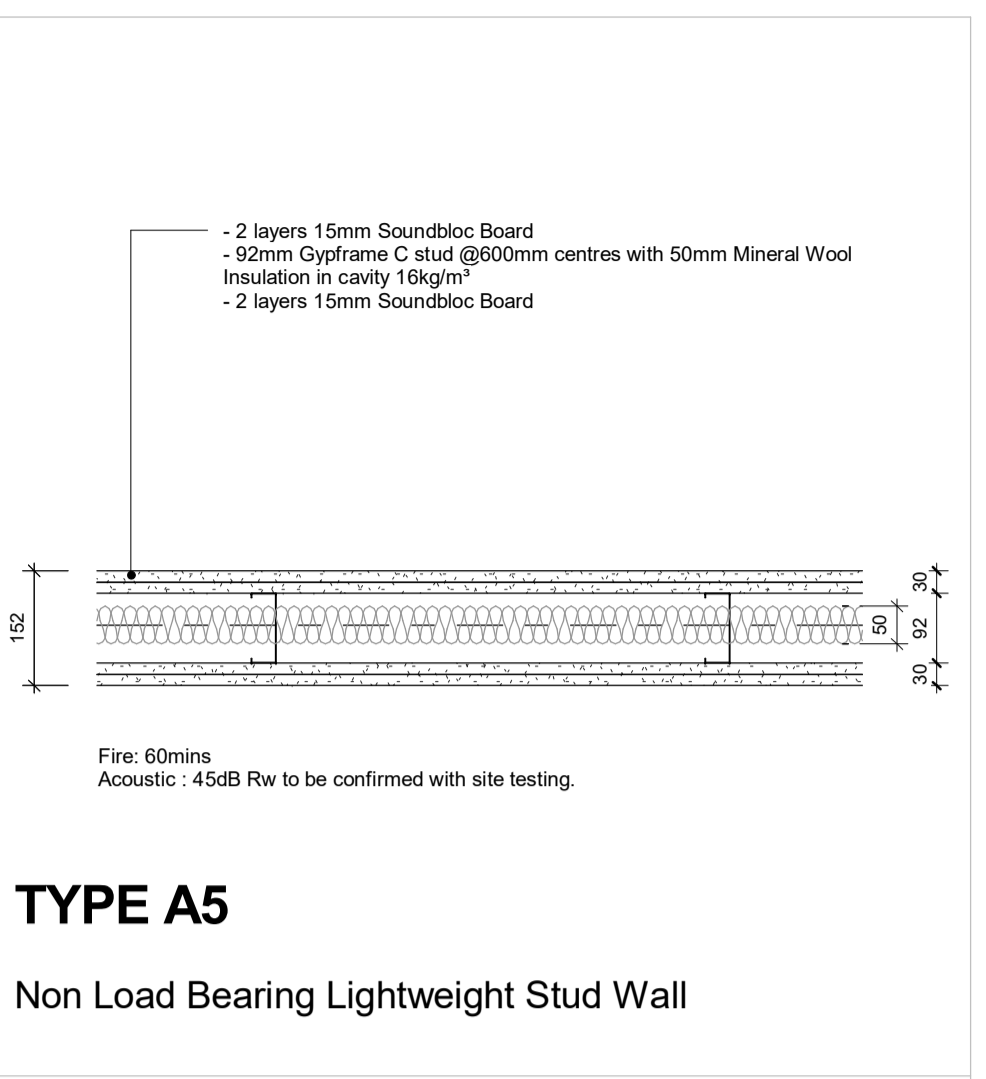
TYPE A2
Non Loadbearing Lightweight Stud Wall - Hotel Shower Room Wall



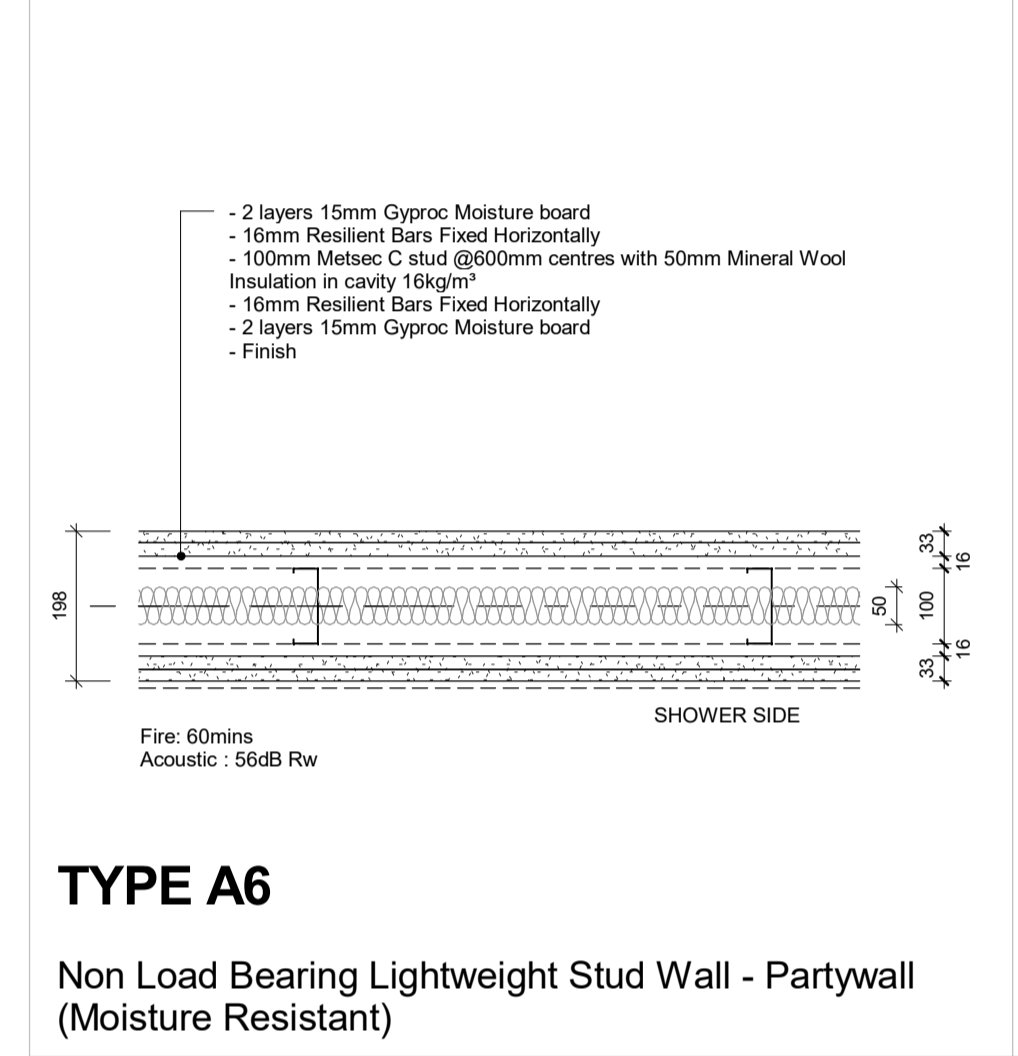
TYPE A3
Non Loadbearing Lightweight Stud Wall - Partywall



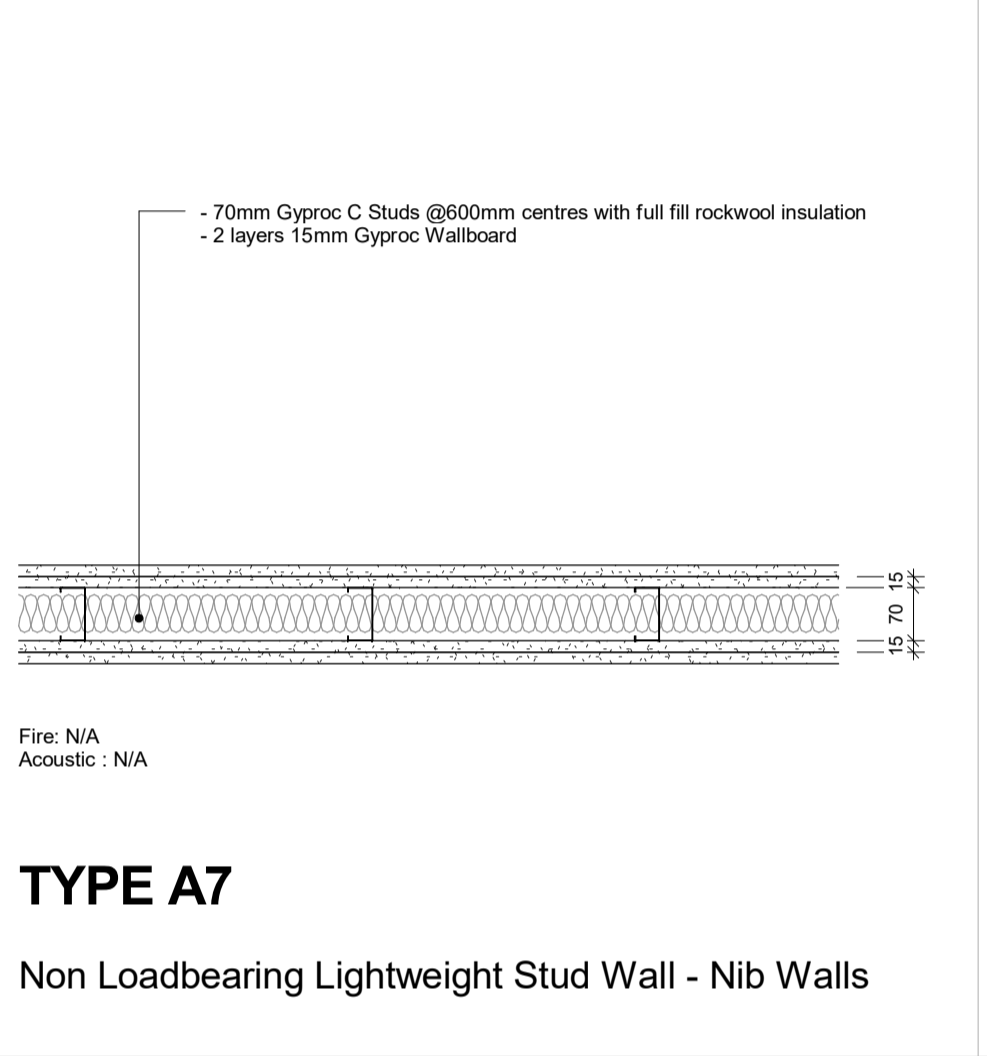
TYPE A4
Non Load Bearing Lightweight Stud Wall with Independent stud



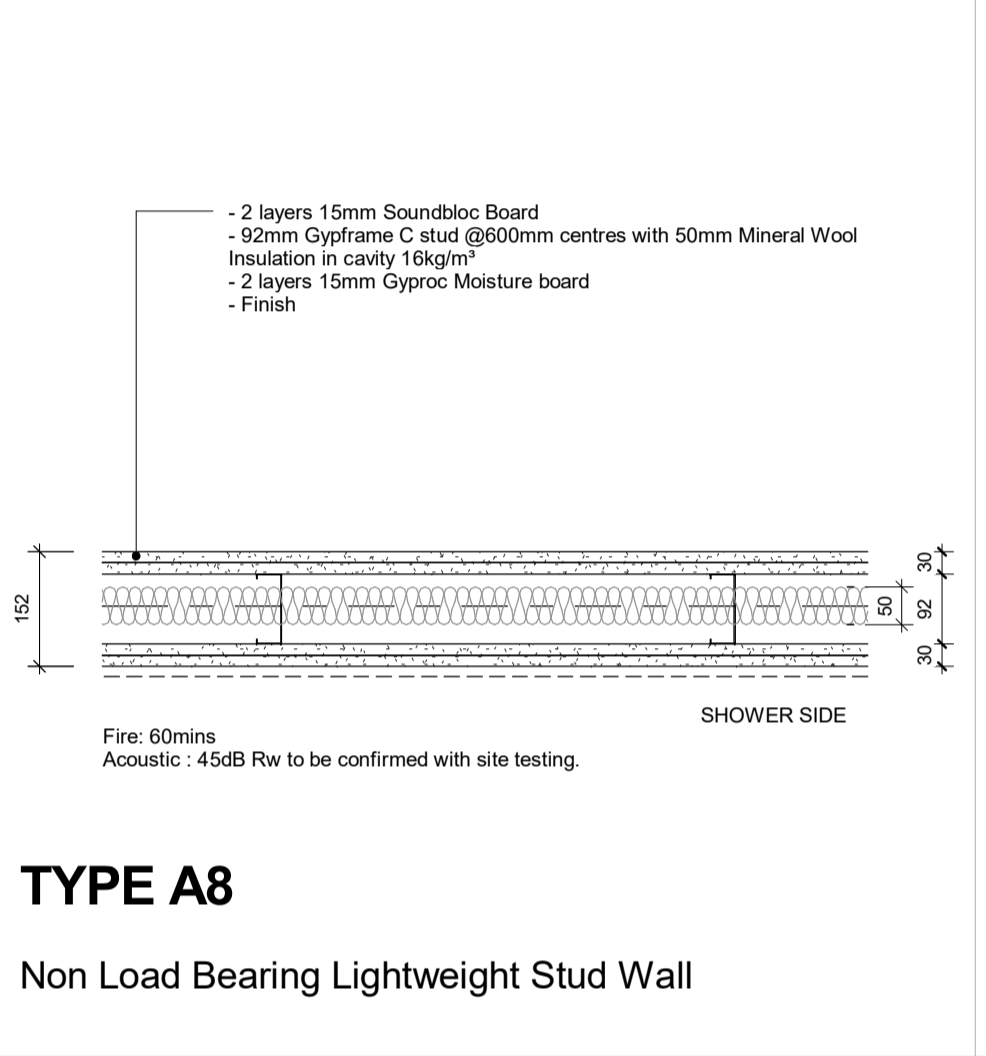
TYPE A5
Non Load Bearing Lightweight Stud Wall



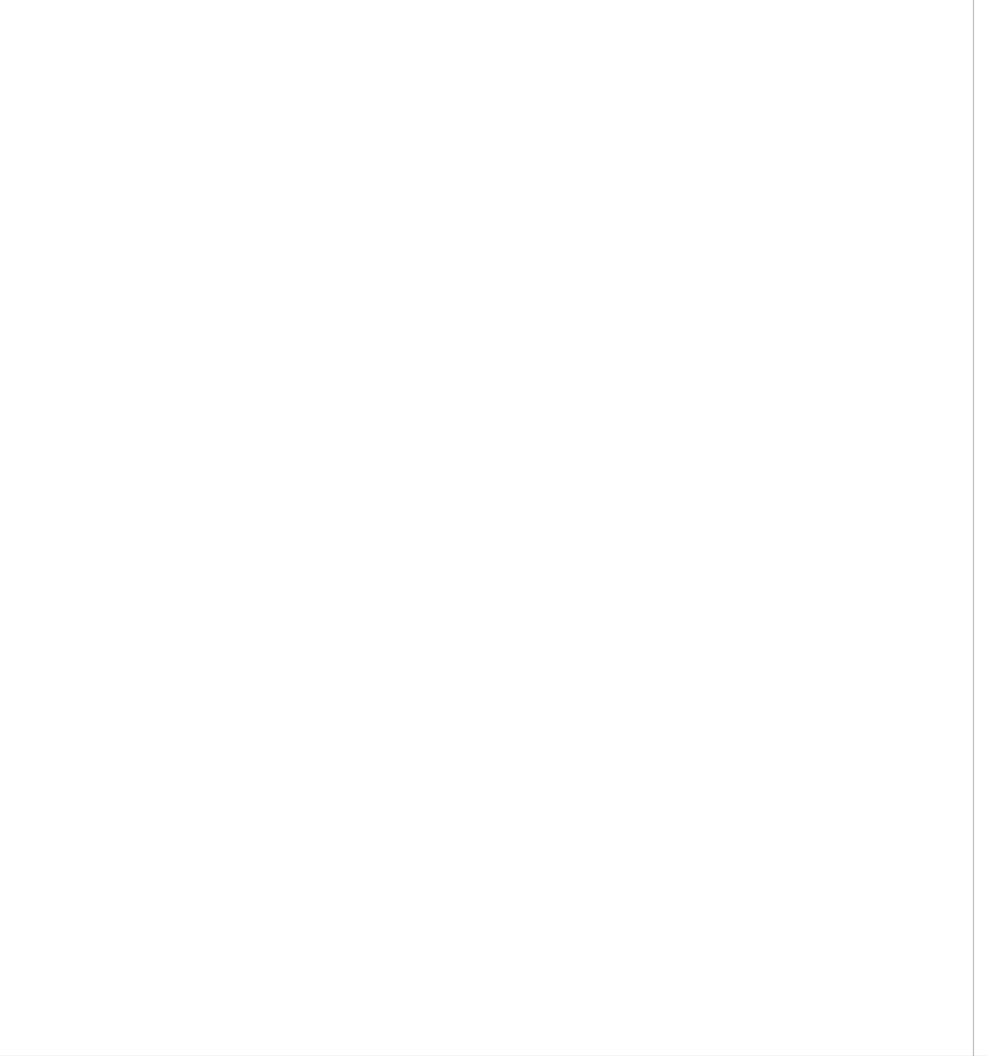
TYPE A6
Non Load Bearing Lightweight Stud Wall - Partywall (Moisture Resistant)



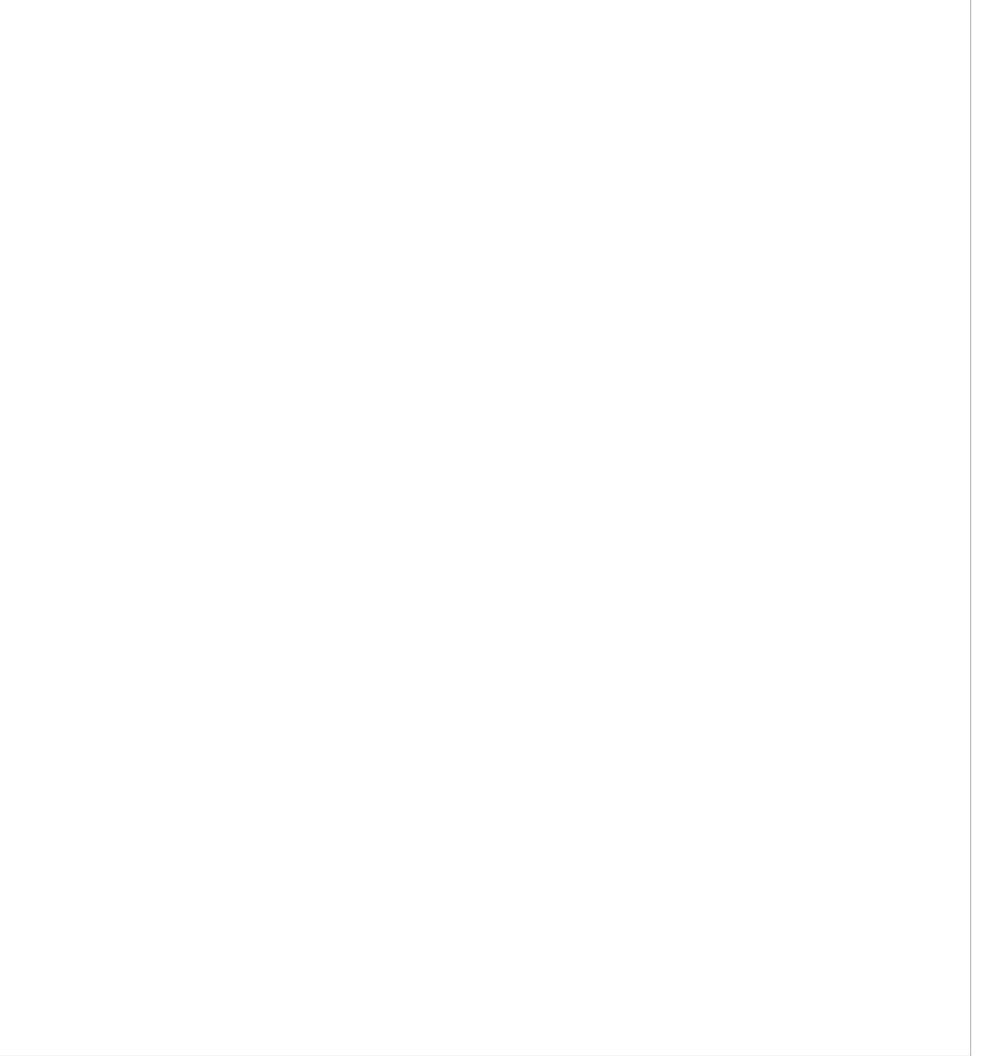
TYPE A7
Non Loadbearing Lightweight Stud Wall - Nib Walls



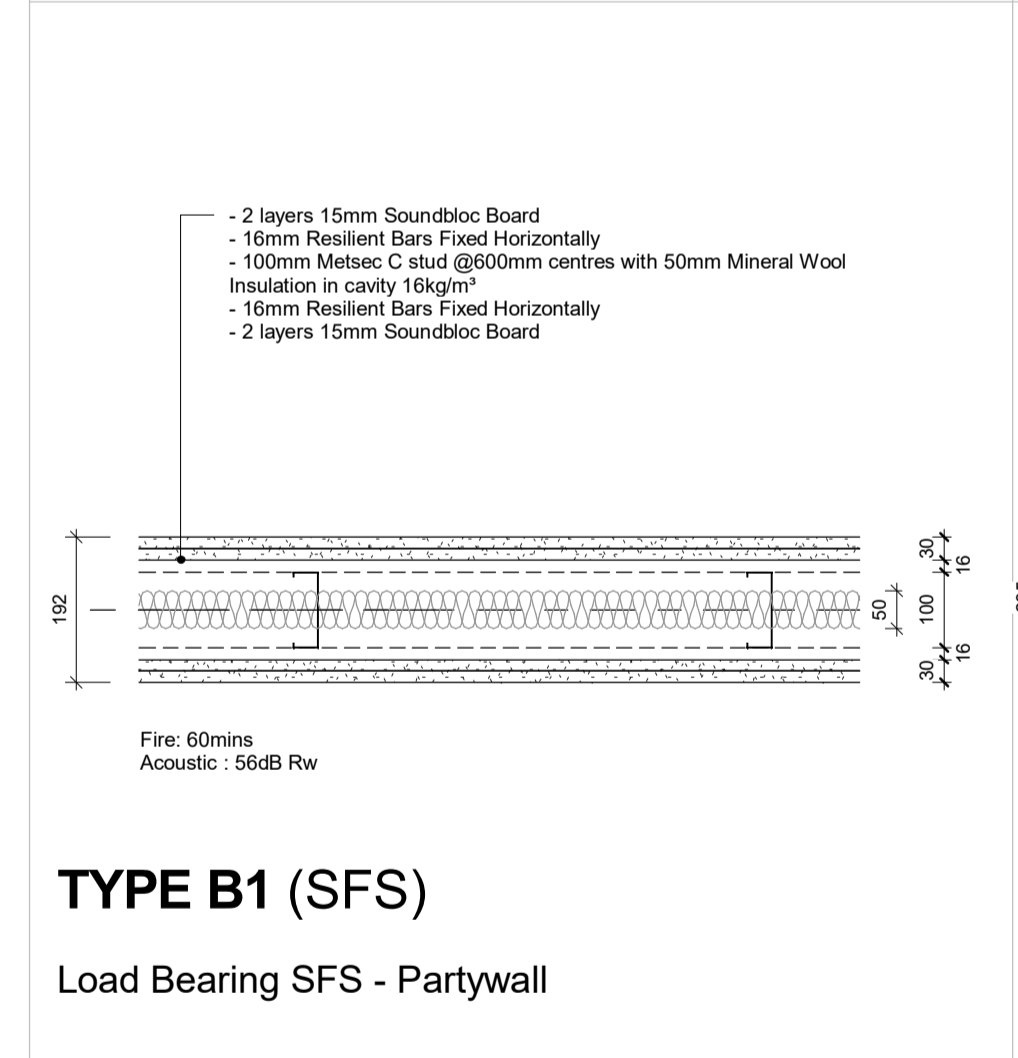
TYPE A8
Non Load Bearing Lightweight Stud Wall



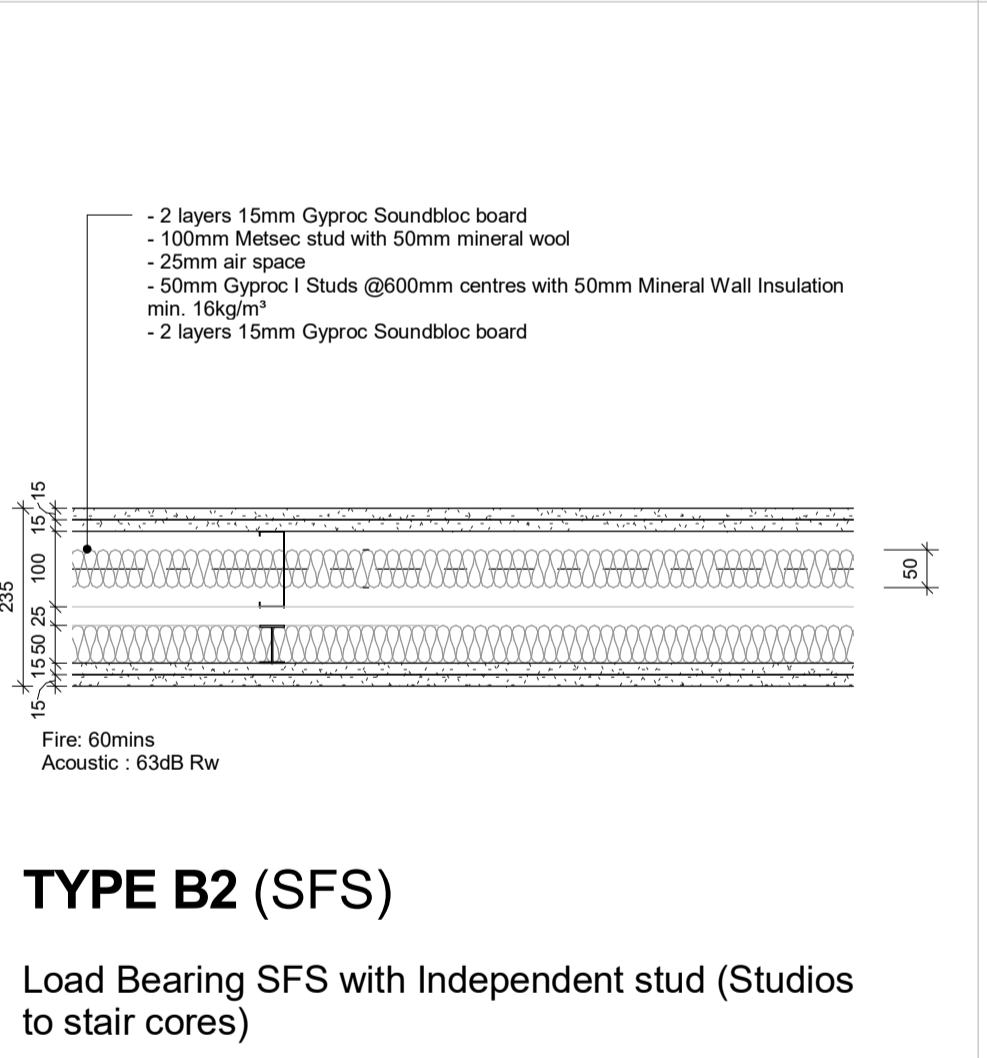
TYPE B4 (SFS)
Load Bearing SFS - Acoustic Lift Shaft



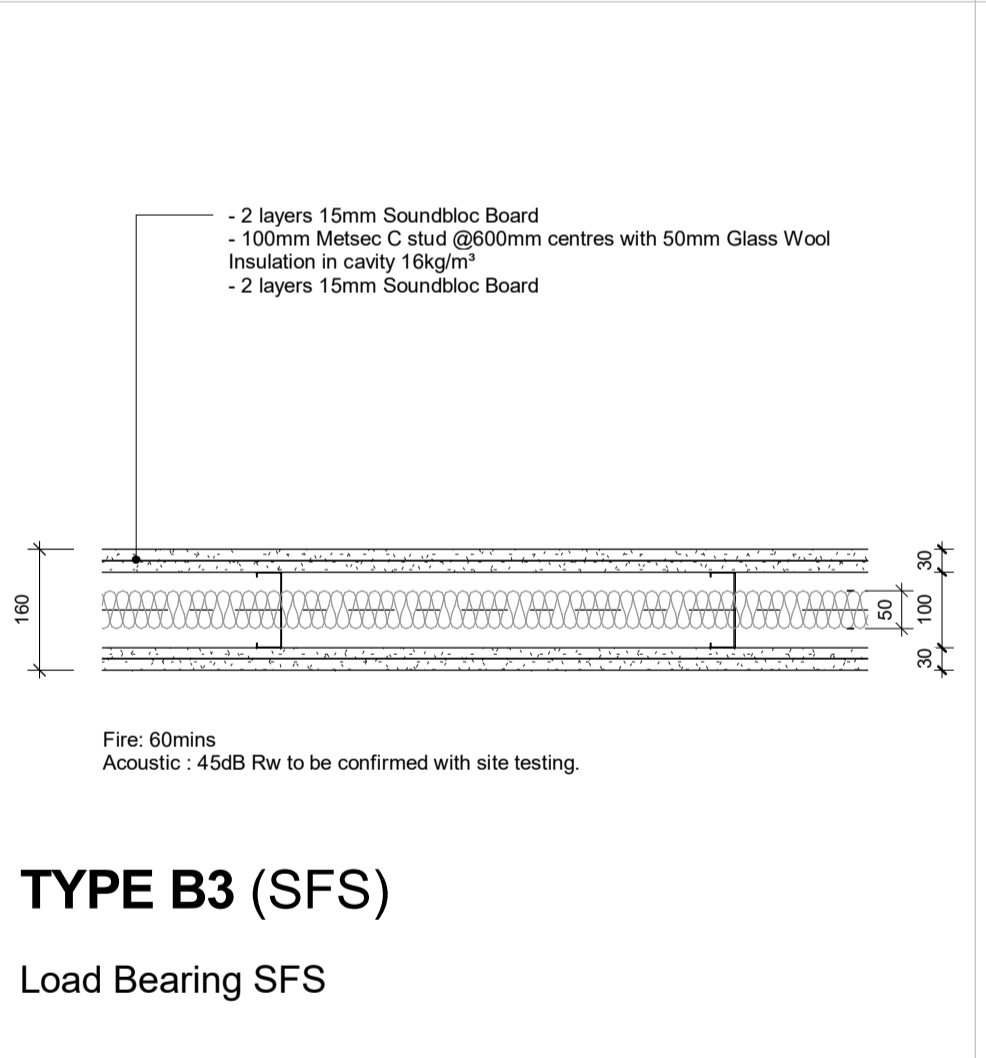
TYPE B5 (SFS)
Load Bearing SFS - Lift Shaft



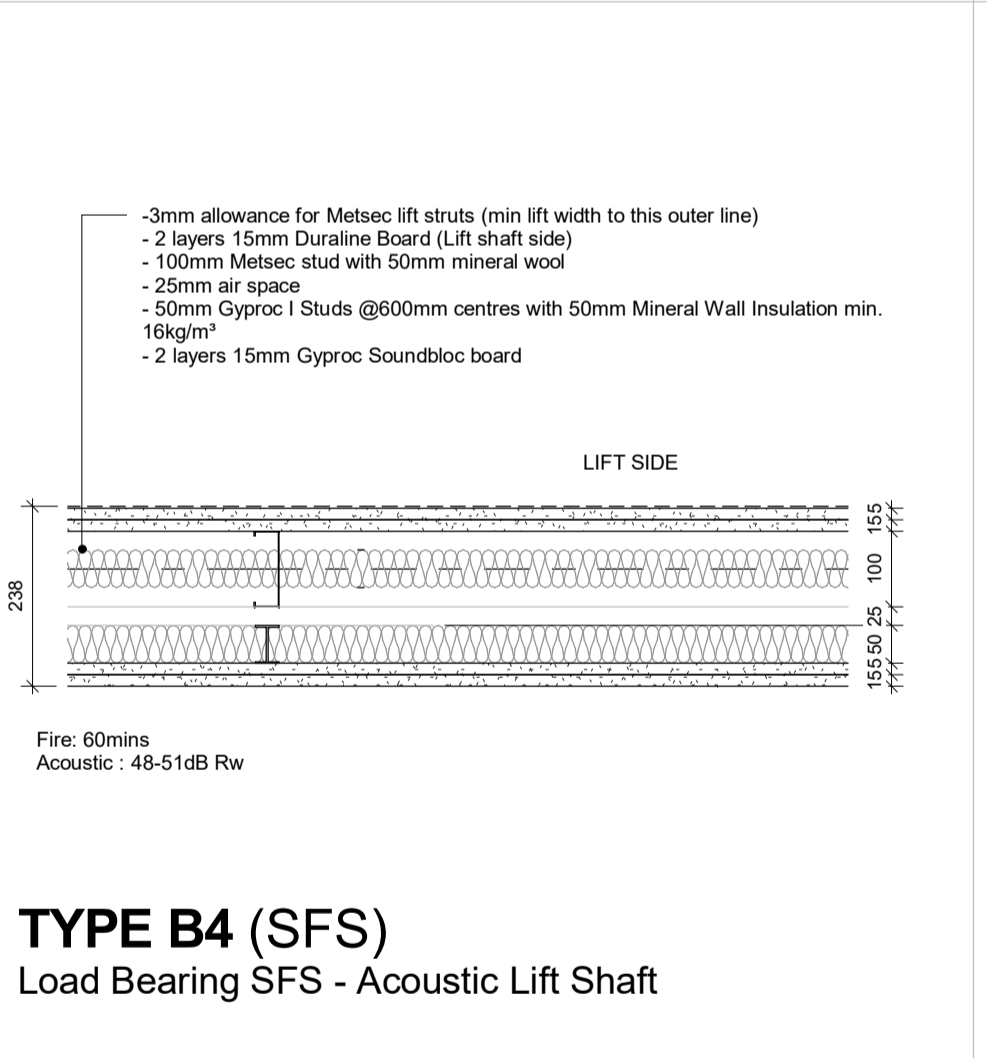
TYPE B1 (SFS)
Load Bearing SFS - Partywall



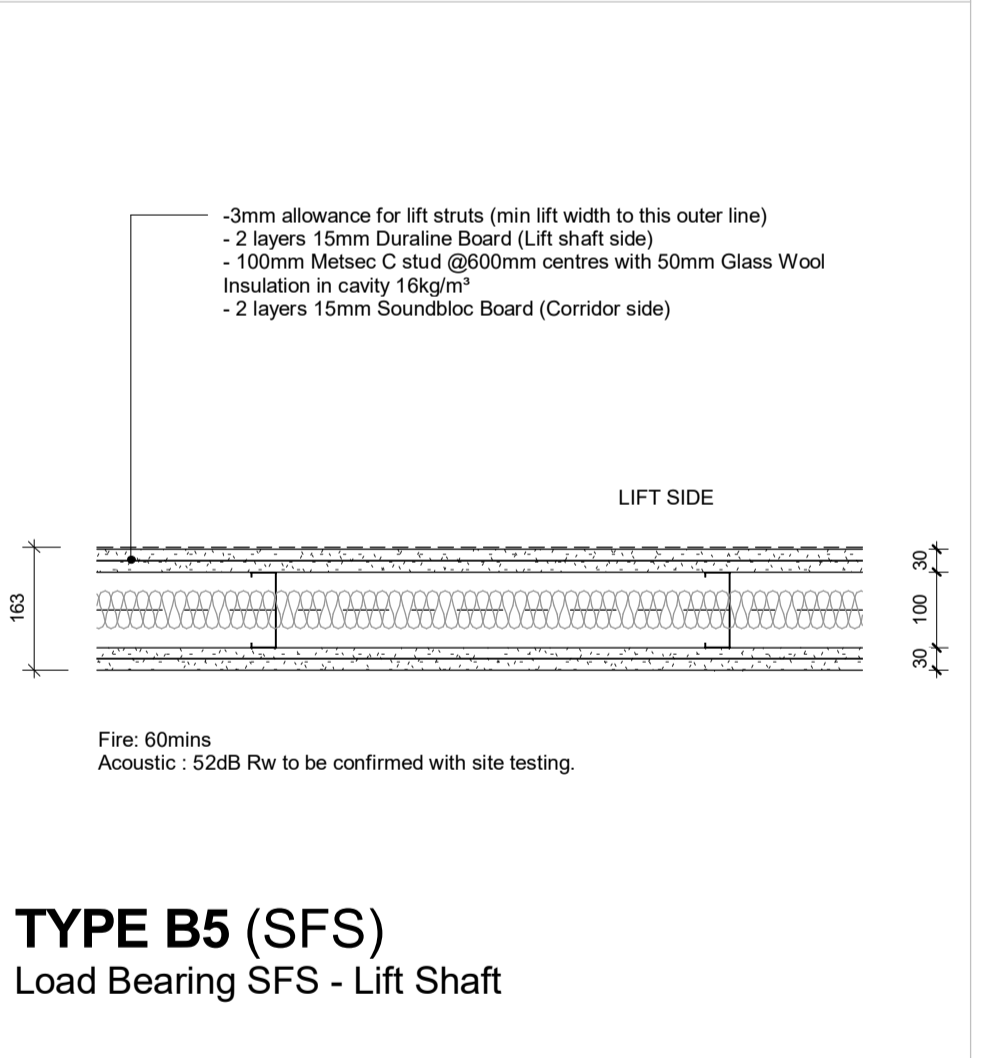
TYPE B2 (SFS)
Load Bearing SFS with Independent stud (Studios to stair cores)



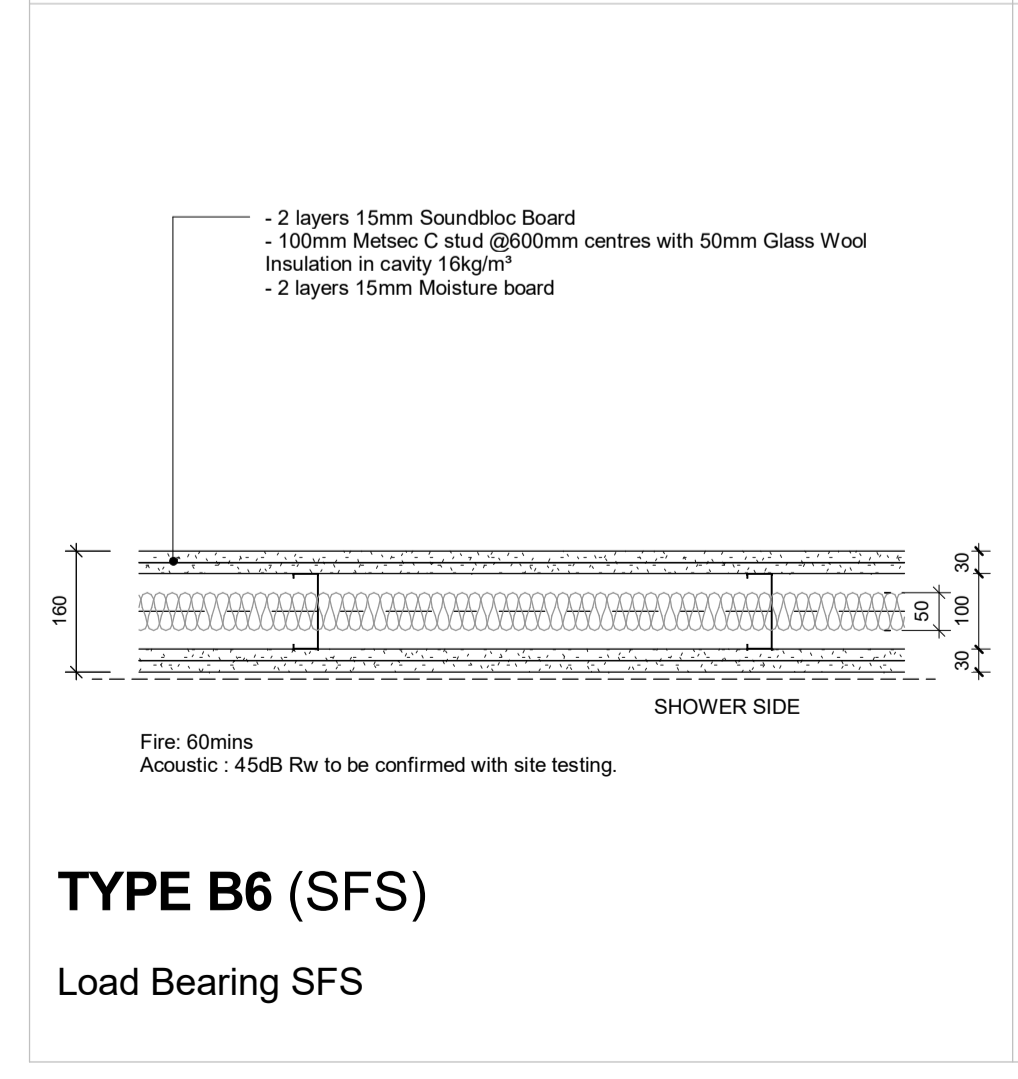
TYPE B3 (SFS)
Load Bearing SFS



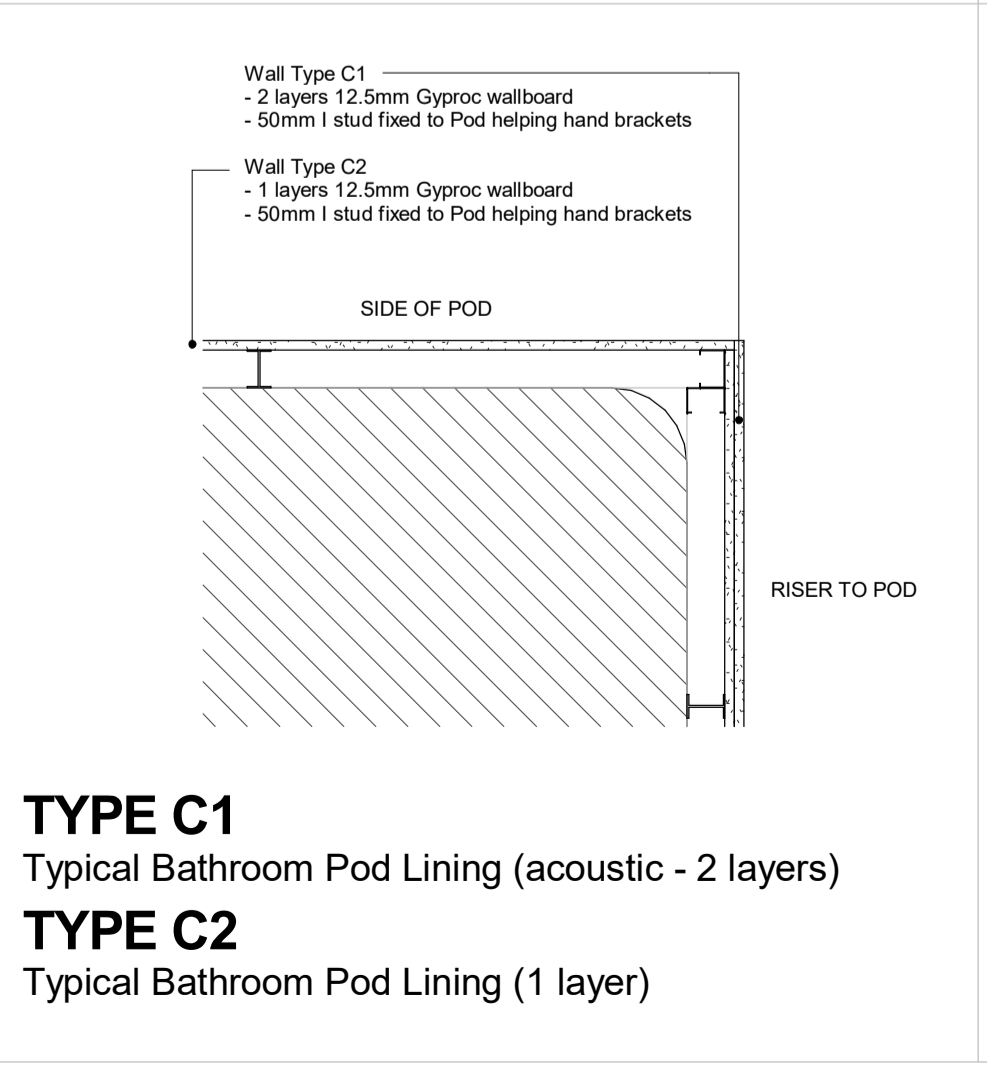
TYPE D2
Non Loadbearing Lightweight Stud Wall boxing out



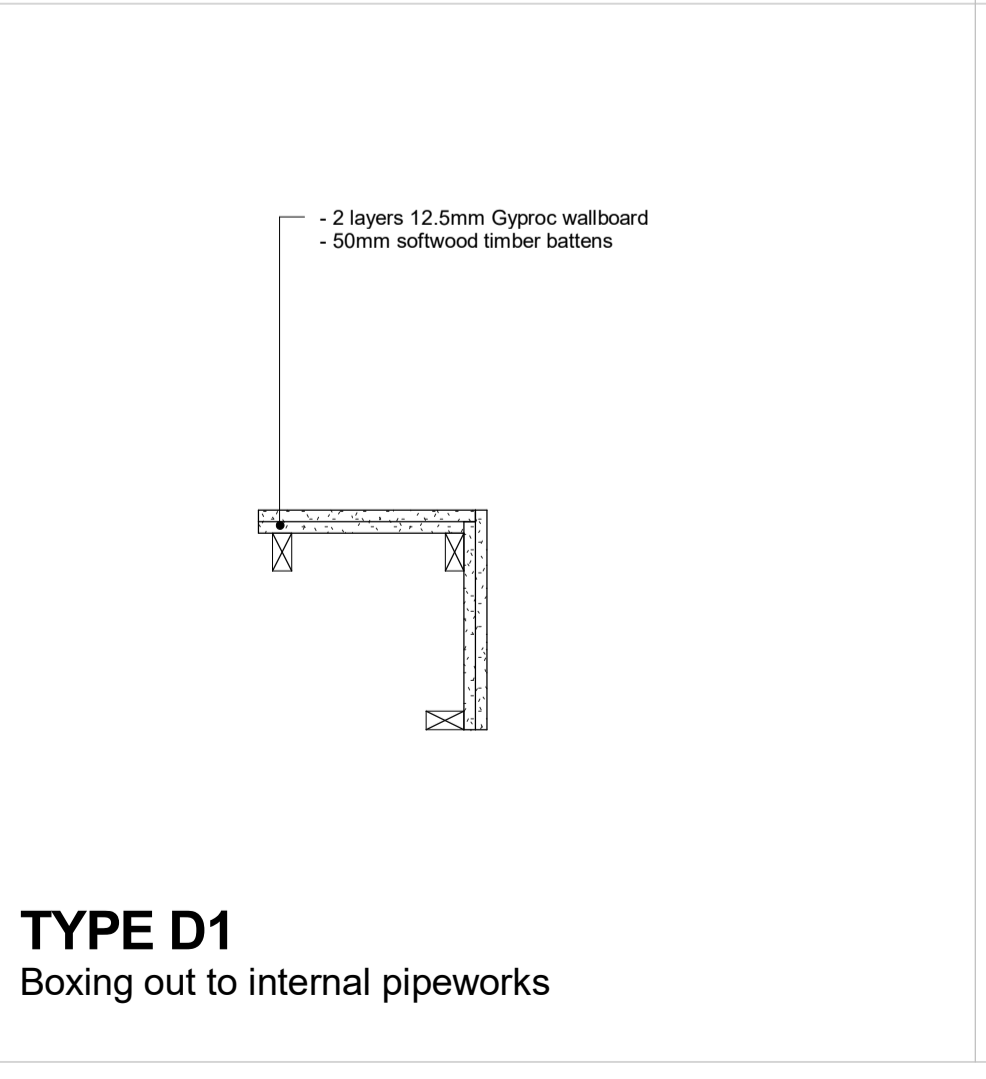
TYPE E1
Non Loadbearing Metal Stud Wall - KTV Room



TYPE B6 (SFS)
Load Bearing SFS



TYPE C1
Typical Bathroom Pod Lining (acoustic - 2 layers)
TYPE C2
Typical Bathroom Pod Lining (1 layer)



TYPE D1
Boxing out to internal pipeworks

NOTES

All wall types to achieve required acoustic rating in accordance with the Acoustic Specification. All sub-contractor proposals to be approved by the Acoustic Engineer.

All wall types to achieve required fire rating in accordance with the Fire Engineers report and drawings. Sub-contractor to advise of any discrepancies prior to installation.

Drawing to be read in conjunction with STL NBS and subcontractor / supplier proposals.

For wall type locations and finishes refer to 150888_46(---) drawing series.

18mm ply or chipboard pattressing to carry wall mounted fittings. (ply to be fitted within stud zone). Locations to be co-ordinated with M&E engineer and furniture supplier.

Metsec wall types in accordance with standard details as indicated. Refer to "Metsec Metframe Architectural Guide".

For all non-loadbearing metal stud partition wall types refer to dry lining sub contractors proposals.

STATUS	REV	DATE	DESCRIPTION
D3	C67	20.04.18	Internal partitions package
D2	P35	27.11.17	Hotel and Extension drawings revised to Hotel Rooms as per Client Brief (Option 2)
D2	P19	08.09.2017	New wall types added
D2	P17	01.09.2017	First issue

CLIENT	REVISOR
Comet Hatfield Construction Limited	DU
CHECKED BY	AMF
ORIGINATOR NO	150888

CONSULTANT

STRIDE TREGLOWN

www.stride-treglow.com

PROJECT

Hotel and Student Residential
Comet Hotel Site

DRAWING TITLE

Wall Types - Internal

SUITABILITY STATUS	SCALE
D3 : SUITABLE FOR CONTRACTOR DESIGN	1 : 10 @ A1
PROJECT ORIGINATOR ZONE LEVEL TYPE ROLE CLASSIFICATION NUMBER	REVISION
COMET-STL-XX-ZZ-DR-A-ZZZZ-63001	C67