

Responsibility is not accepted for errors made by others in scaling from this drawing. All construction information should be taken from figured dimensions only.

0mm 50mm 100mm

LEGEND

Clear Glazing (see schedule for acoustic ratings) (Dashed line denotes hanging of window. Arrow points to hinge).

Glazed Spandrel Panel RAL 7015 Grey

NOTES

THIS DRAWING SHOWS DESIGN INTENT ONLY. REFER TO WINDOW SUPPLIERS INFORMATION. ACTUAL WINDOW SIZES TO BE CONFIRMED BY WINDOW SUPPLIER WITH ON SITE MEASUREMENTS. ALL DIMENSIONS SHOWN ON THIS DRAWING ARE TAKEN FROM SUMO BUILDING SURVEY. ACTUAL OPENING SIZES TO BE CONFIRMED BY SPECIALIST SUB-CONTRACTOR.

Information to be read in conjunction with the following drawings:

- 10000 Series Proposed GA Floor Plans
- 20001 Series Proposed Elevations
- 72001 Window Schedule
- 82014 Comet Hotel - Window, external door details

Window frame colour RAL 9010 White. New window option to be polyester powder coated.

Acoustic performance to be in accordance with Acoustic Specification.

Windows to be fitted with permanent restrictors limiting the opening of operable lights to 15°.

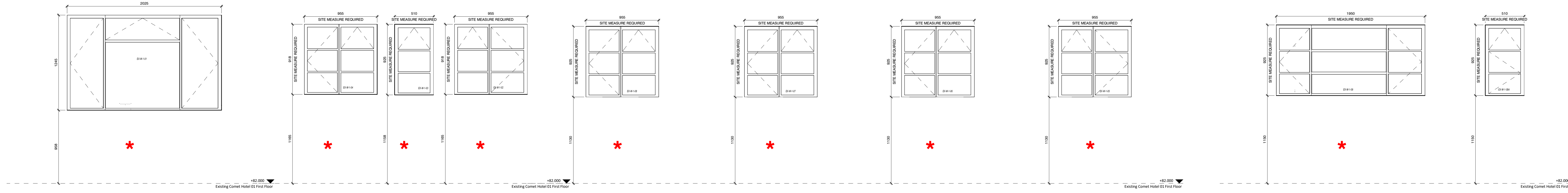
EPDM adhered to window framing and sealed in accordance with manufacturers recommendations.

Glazing with oil height below 800mm AFFL to be toughened glass.

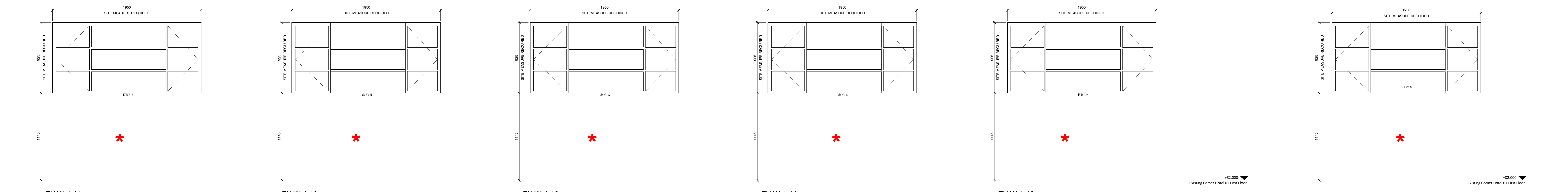
All windows to be steel double glazed and to replicate existing transom and mullion configuration.

Note:
Refer to Bidwells heritage report for condition survey of existing windows

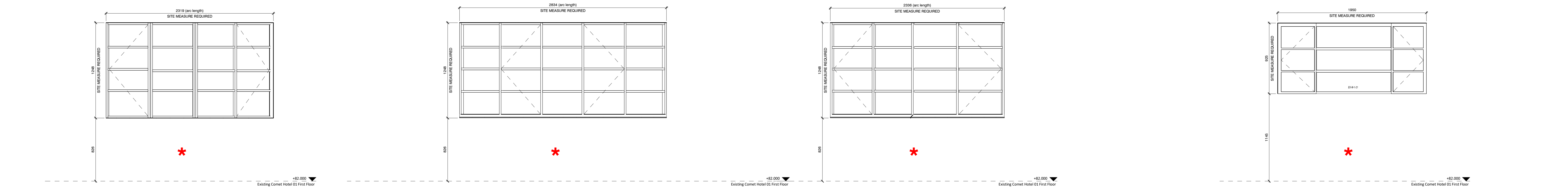
Secondary Glazing
* Denotes windows requiring double glazed secondary glazing



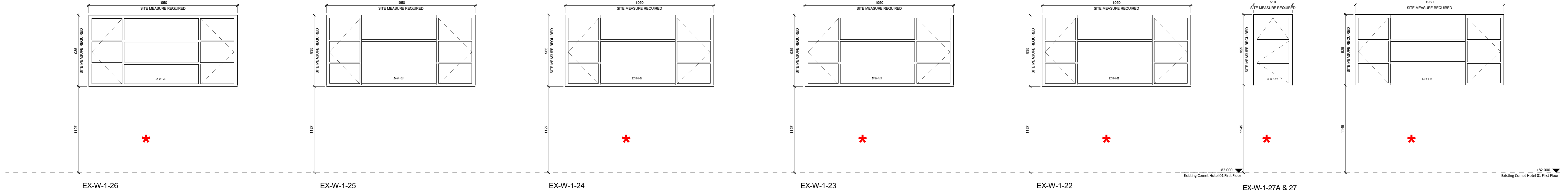
EX-W-01 1:20
EX-W-1-04
EX-W-1-03
EX-W-1-02
EX-W-1-08
EX-W-1-07
EX-W-1-06
EX-W-1-05
EX-W-1-09 & 09A 1:20



EX-W-1-14
EX-W-1-13
EX-W-1-12
EX-W-1-11
EX-W-1-10
EX-W-1-15 1:20



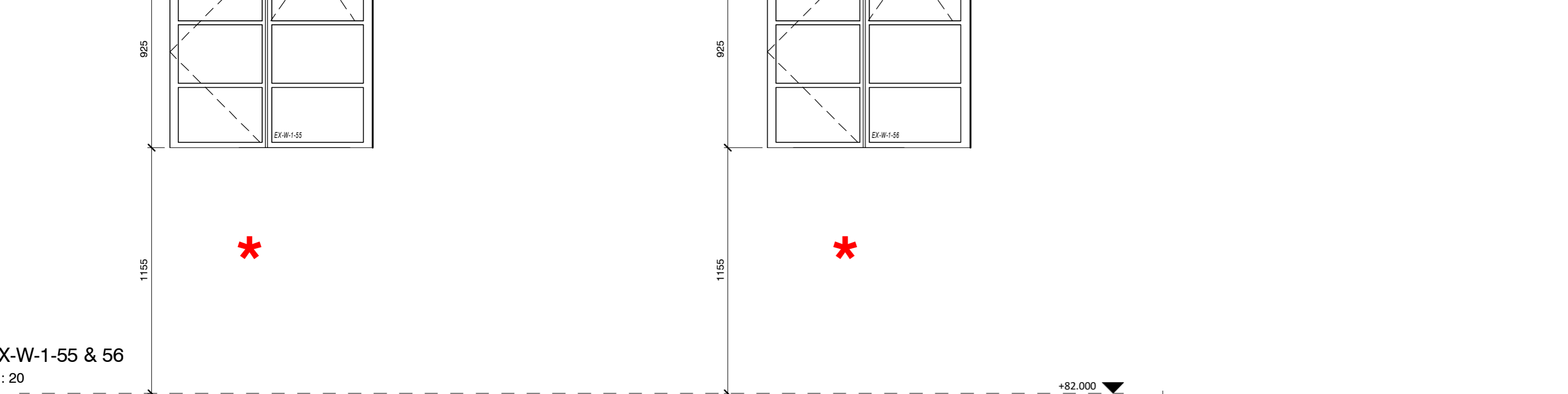
EX-W-1-17 1:20
EX-W-1-18 1:20
EX-W-1-19 1:20
EX-W-1-21 1:20



EX-W-1-26
EX-W-1-25
EX-W-1-24
EX-W-1-23
EX-W-1-22
EX-W-1-27A & 27 1:20



EX-W-1-31
EX-W-1-30
EX-W-1-29
EX-W-1-28
EX-W-1-34
EX-W-1-33
EX-W-1-32
EX-W-1-35 1:20
EX-W-1-51
EX-W-1-50



EX-W-1-55 & 56 1:20

COURTYARD ROOF WINDOWS NOTE:

WINDOWS EX-W-1-36 TO 46 TO THE FIRST FLOOR COURTYARD ARE TO BE REFURBISHED IN SITU. WHERE GLAZING UNITS ARE DAMAGED THESE NEED TO BE REGLAZED (WITH ASSOCIATED PUTTY) WITH OBSCURE GLASS. WINDOWS TO HAVE OPAQUE FILM APPLIED. ALL OPENABLE VENTS TO BE REFURBISHED TO ENSURE THEY ARE OPERATIONAL. REPLACE ANY HANDLES / HINGES & RESTRICTORS AS REQUIRED. NO SECONDARY GLAZING REQUIRED TO THESE WINDOWS (EX-W-1-36 TO 46) PLEASE NOTE THESE WINDOWS HAVE NOT BEEN ELEVATED.

NO	DATE	DESCRIPTION	REVISION BY
S2	C118	10.10.18 Revised for Planning Submission following on site meeting with Planning and Heritage Officer	RW
S2	C204	31.08.18 External door and window package issued for tender only	AMF
S2	C75	01.06.18 Listed Building Submission. Refer to revision clouds for amendments	AMF

STATUS | REV | DATE | DESCRIPTION

CLIENT: Comet Hatfield Construction Limited

ORIGINATOR NO: 150888

CONSULTANT: STRIDE TREGLOWN

PROJECT: Hotel and Student Residential Comet Hotel Site

DRAWING TITLE		SCALE
Existing window types (First Floor)		1:20 @ A0
Like for Like Replacements		
SUITABILITY STATUS	INFORMATION	REVISION
S2: SUITABLE FOR	COMET-STL-00-ZR-A-ZZZZ-62012	C118