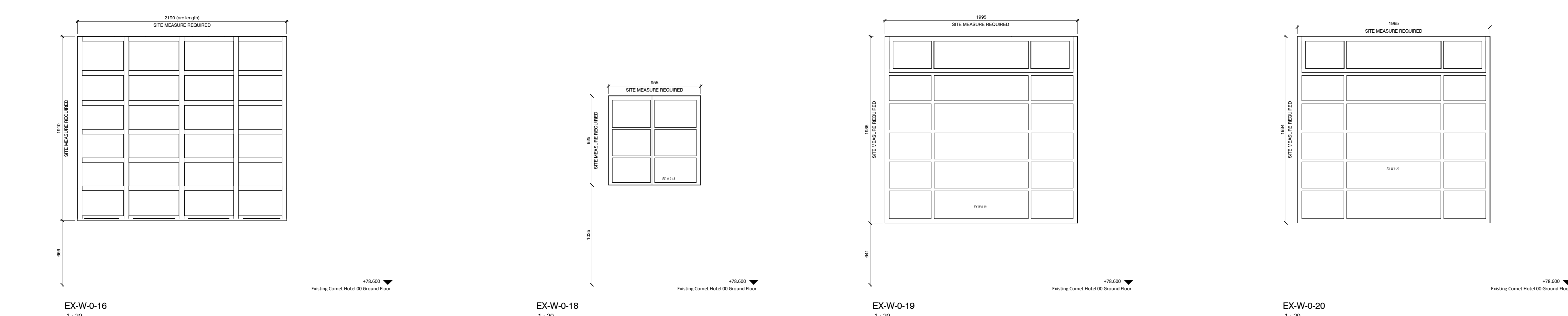
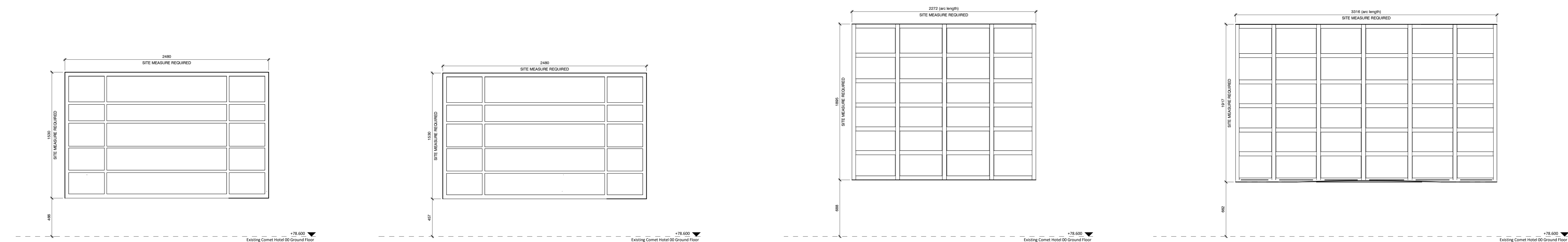
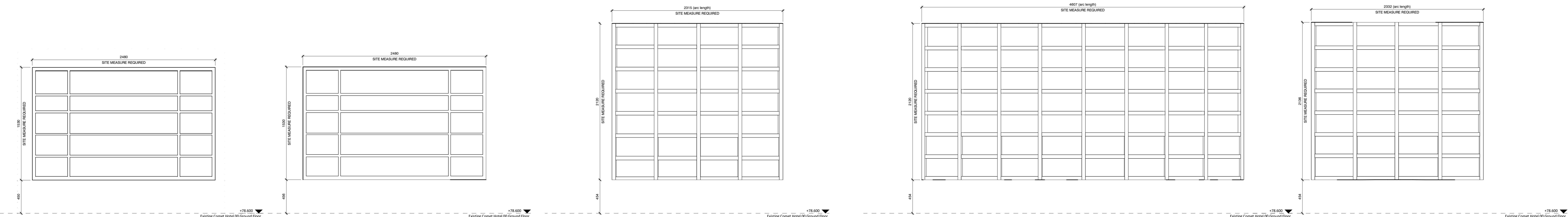
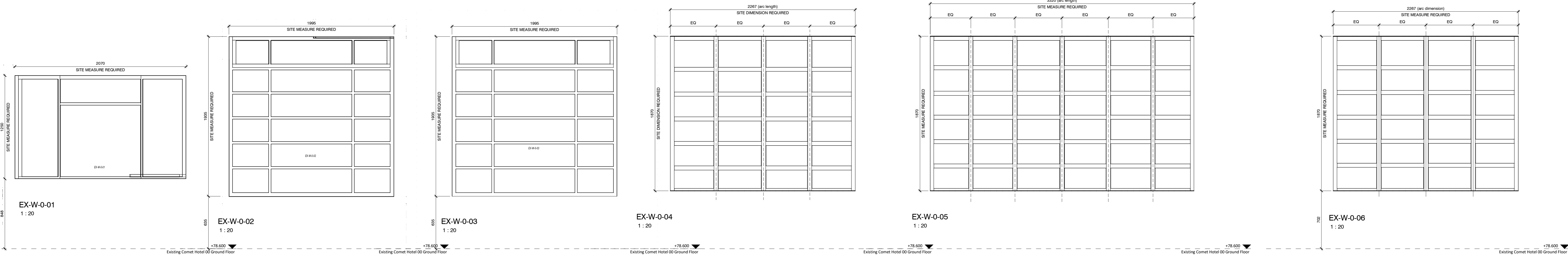


Note:
 Refer to Bidwells heritage report for
 condition survey of existing windows



S2 C75 01.06.18 Listed Building Submission. Refer to revision clouds for amendments

STATUS	REV	DATE	DESCRIPTION	REVISION BY
CLIENT				RW
Comet Hatfield Construction Limited				CHECKED BY
				Checker
				ORIGINATOR NO
				150888

CONSULTANT
STRIDE TREGLOWN
 www.stride-treglow.com © Stride Treglow Limited 2014
 PROJECT
 Hotel and Student Residential
 Comet Hotel Site

DRAWING TITLE
 Existing window types (Ground Floor)
 Like for Like Replacements

SUFFICIENCY STATUS S2 : SUITABLE FOR INFORMATION	SCALE 1 : 20 @ A0
PROJECT ORIGINATOR ZONE LEVEL TYPE ROLE CLASSIFICATION NUMBER COMET-STL-00-ZZ-DR-A-ZZZZ-62011	REVISION C73