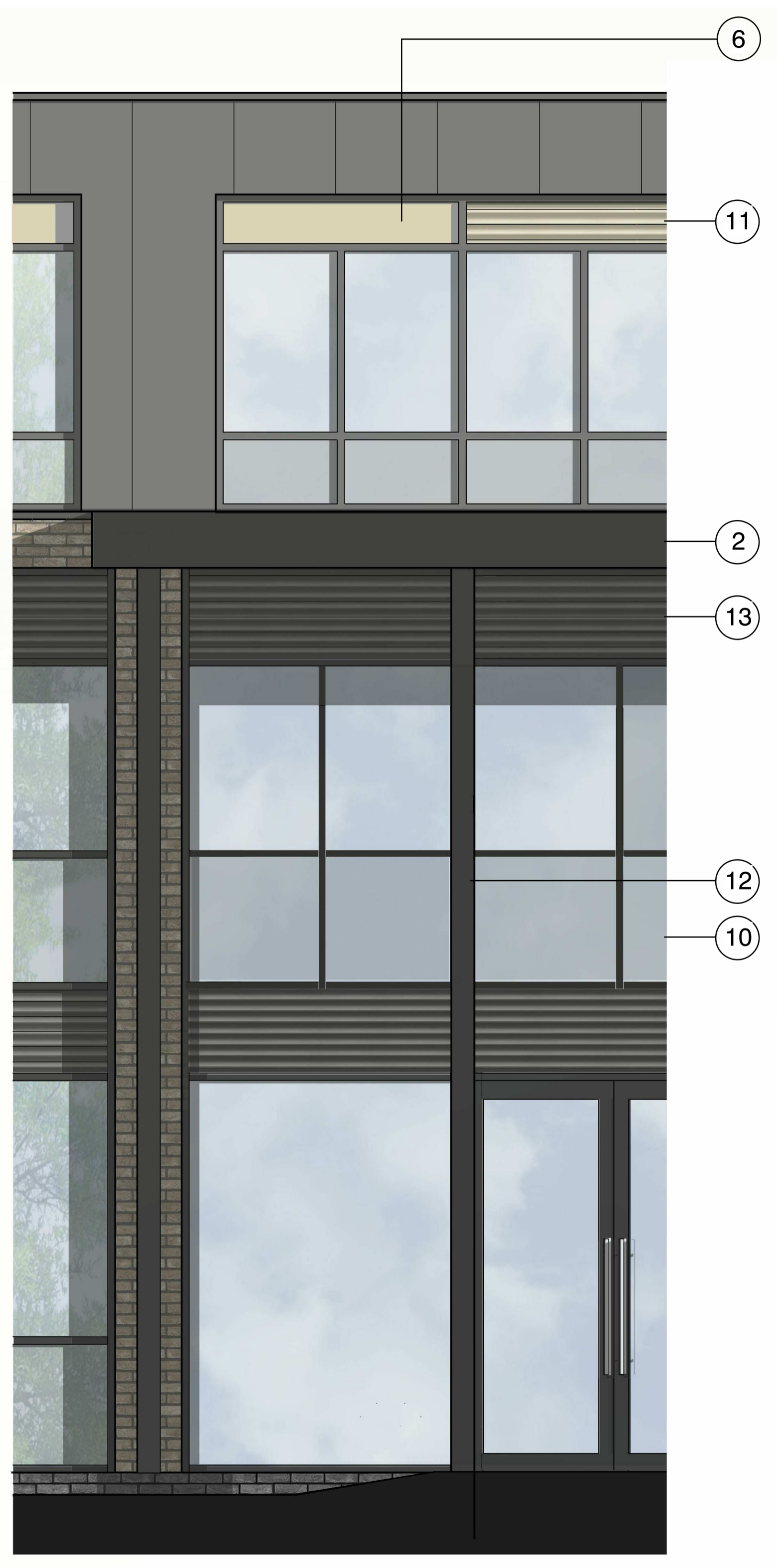
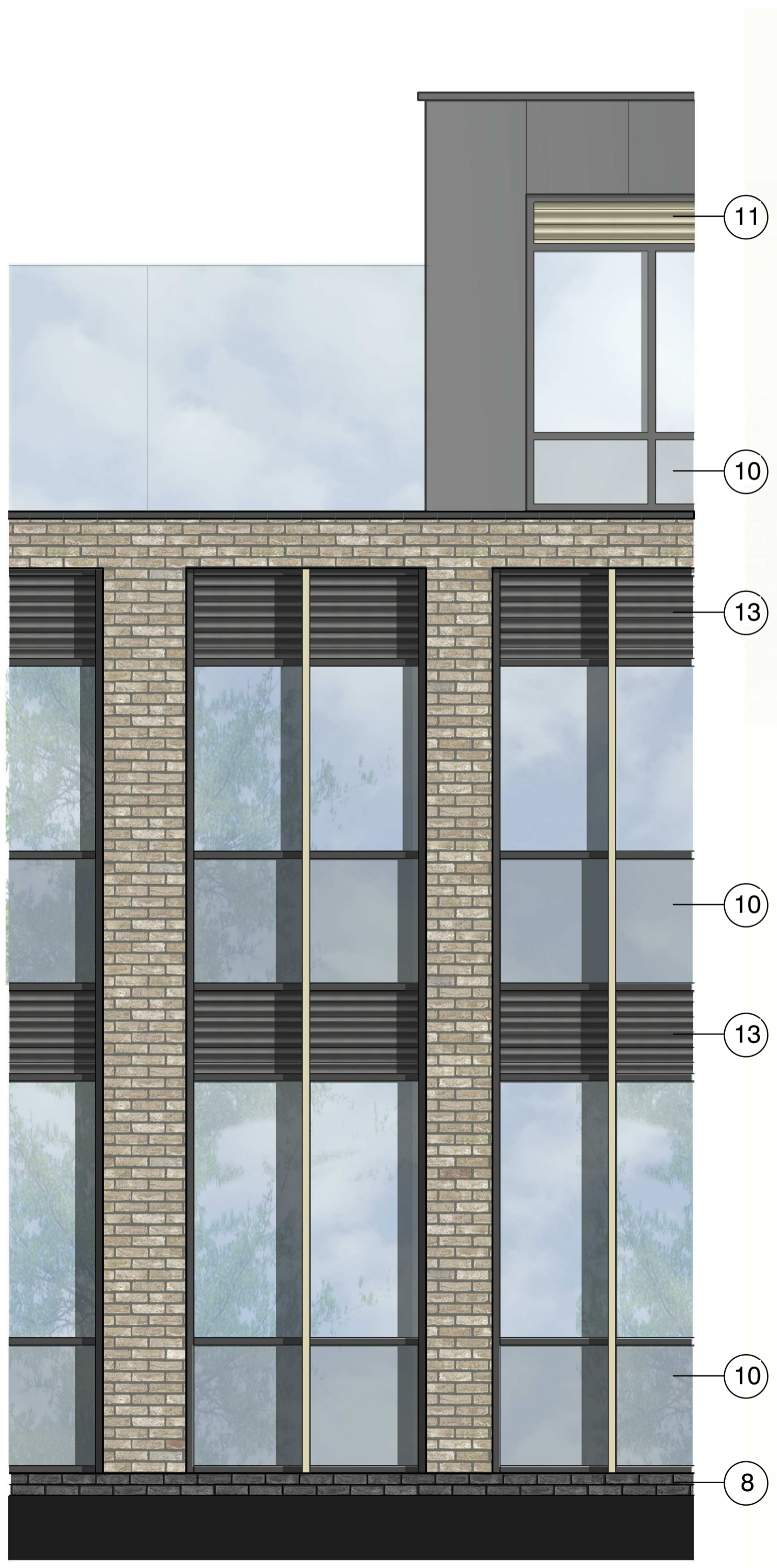


**MATERIAL KEY**

- ① FACADE LIGHT BUFF / MULTI BRICKWORK
- ② DARK METAL STANDING SEAM CLADDING
- ③ PPC ALUMINIUM GLAZING
- ④ ANODISED ALUMINIUM FINIS
- ⑤ TERACOTTA RAINSCREEN CLADDING
- ⑥ ANODISED ALUMINIUM PANEL
- ⑦ PPC ALUMINIUM CURTAIN WALLING WITH PROTECTING MULLIONS
- ⑧ BLACK ENGINEERING BRICKWORK BELOW DPC LEVEL
- ⑨ GLAZED BALUSTRADE
- ⑩ GLAZED SPANDREL PANEL
- ⑪ LOUVRE PANEL (COLOUR TO MATCH ANODISED ALUMINIUM PANEL)
- ⑫ RECTANGULAR DARK METAL STANDING SEAM COLUMN
- ⑬ LOUVRE PANEL (COLOUR TO MATCH CURTAIN WALL MULLIONS)
- ⑭ FACADE LIGHT BUFF / MULTI BRICKWORK 25M RECESS



P 22.11.17 Latest drawings for planning NMA

STATUS	REV	DATE	DESCRIPTION	REVISED BY
CLIENT				RR
Comet Hatfield Construction Limited				CHECKED BY
				AMF
				ORIGINATOR NO
				150888

CONSULTANT  
**STRIDE TREGLOWN**  
www.stride-treglow.com © Stride Treglow Limited 2016

PROJECT  
 Hotel and Student Residential  
 Comet Hotel Site

DRAWING TITLE  
**Proposed Bay Elevations Comet Extension**

SUITABILITY STATUS PL : PLANNING	SCALE 1 : 100 @ A1
-------------------------------------	-----------------------

PROJECT   ORIGINATOR   ZONE   LEVEL   TYPE   ROLE   CLASSIFICATION   NUMBER	REVISION
COMET-STL-00-ZZ-DR-A-ZZZZ-02014	-