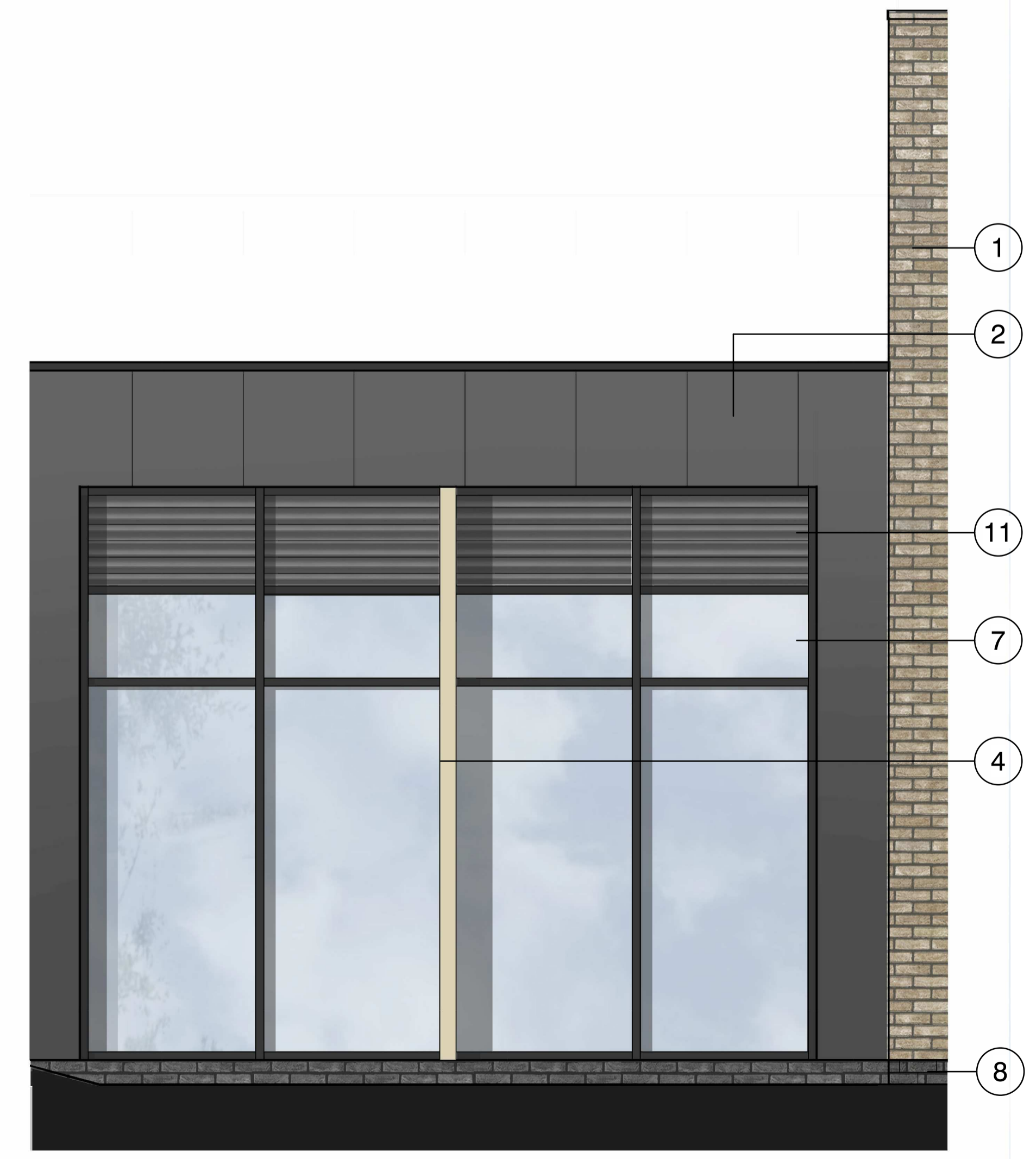
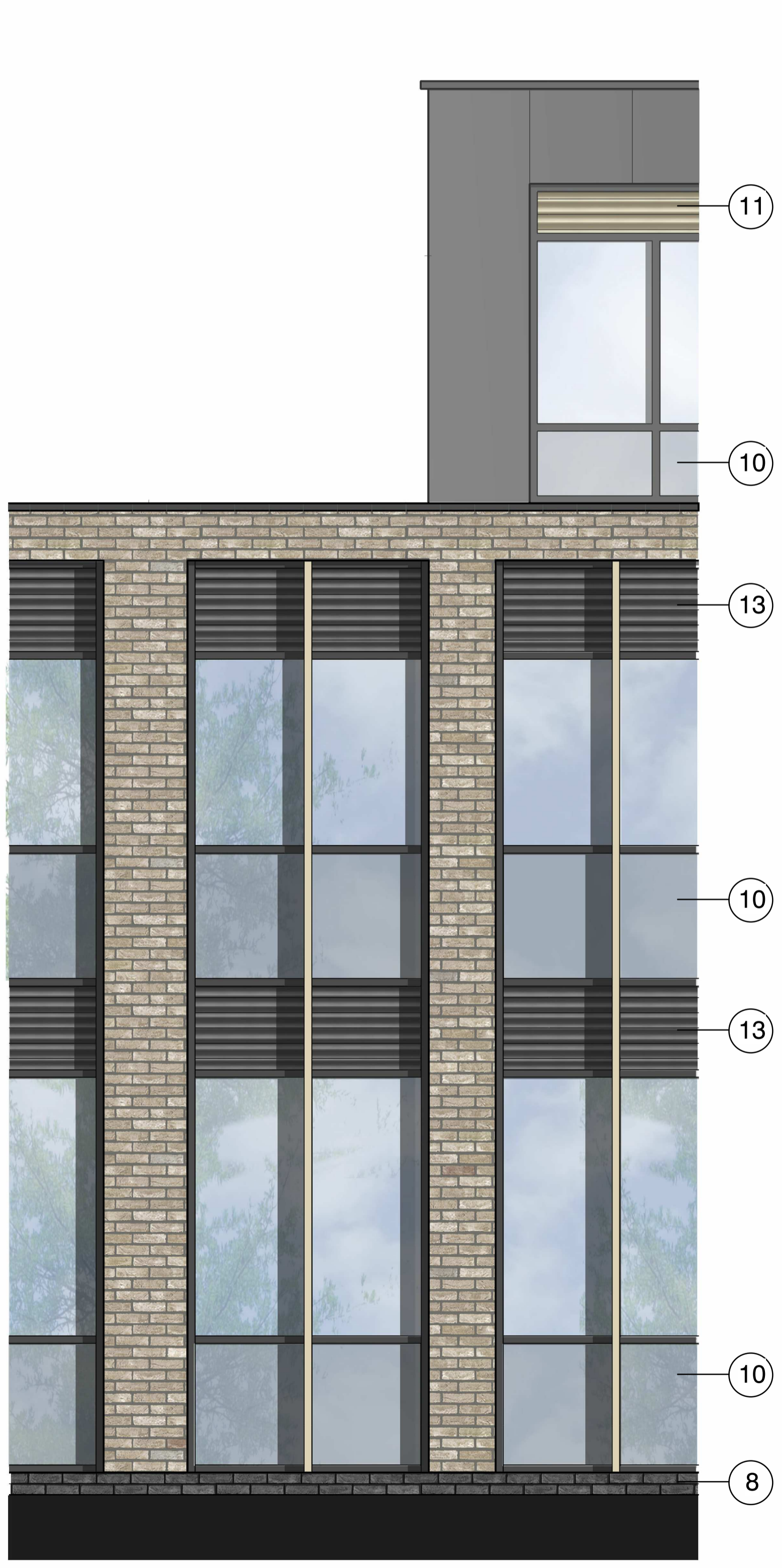


### MATERIAL KEY

- ① FACADE LIGHT BUFF / MULTI BRICKWORK
- ② DARK METAL STANDING SEAM CLADDING
- ③ PPC ALUMINIUM GLAZING
- ④ ALUMINIUM FIN
- ⑤ TERRACOTTA RAINSCREEN CLADDING
- ⑥ ALUMINIUM PANEL
- ⑦ PPC ALUMINIUM CURTAIN WALLING WITH PROJECTING MULLIONS
- ⑧ BLACK ENGINEERING BRICKWORK BELOW DPC LEVEL
- ⑨ GLAZED BALUSTRADE
- ⑩ GLAZED SPANDREL PANEL
- ⑪ LOUVRE PANEL (COLOUR TO MATCH ALUMINIUM PANEL)
- ⑫ RECTANGULAR DARK METAL STANDING SEAM CLAD COLUMN
- ⑬ LOUVRE PANEL (COLOUR TO MATCH CURTAIN WALL MULLIONS)
- ⑭ FACADE LIGHT BUFF / MULTI BRICKWORK 25MM RECESS
- ⑮ RENDER
- ⑯ uPVC WINDOWS



STATUS	REV	DATE	DESCRIPTION
P	P63	23.03.18	Planning amendments including terracotta rainscreen amended, glass balustrade omitted, render to Blocks B/C/D, height of link reduced & double doors omitted, height of extension canopy reduced.
P	-	22.11.17	Latest drawings for planning NMA

CLIENT	REVISOR
Comet Hatfield Construction Limited	RR
CHECKED BY	ORIGINATOR NO
AMF	150888

CONSULTANT  
**STRIDE TREGLOWN**  
www.stride-treglow.com © Stride Treglow Limited 2016  
 PROJECT  
 Hotel and Student Residential  
 Comet Hotel Site

DRAWING TITLE  
**Proposed Bay Elevations Comet Extension**

SUITABILITY STATUS	SCALE
PL : PLANNING	1 : 100 @ A1

PROJECT   ORIGINATOR   ZONE   LEVEL   TYPE   ROLE   CLASSIFICATION   NUMBER	REVISION
COMET-STL-00-ZZ-DR-A-ZZZZ-02014	P63