

LEGEND

POWER

- MAIN SWITCHBOARD
- DISTRIBUTION BOARD
- ISOLATOR
- 13A DUAL EARTH SINGLE UNSWITCHED SOCKET OUTLET
- 13A DUAL EARTH TWIN SWITCHED SOCKET OUTLET
- 13A DUAL EARTH SWITCHED SINGLE SOCKET OUTLET
- 13A DUAL EARTH TWIN SWITCHED SOCKET OUTLET WITH INTEGRAL 2A USB CHARGING UNIT
- DADO TRUNKING MOUNTED BELOW DESK
- UNSWITCHED FUSED CONNECTION UNIT
- SWITCHED FUSED CONNECTION UNIT
- COOKER OUTLET
- VENTILATION BOOST SWITCH
- FLOOR OUTLET BOX CONTAINING 1No. TSSO WITH INTEGRAL USB CHARGER AND HDMI OUTLET LINKED TO TV POSITION
- HAND DRYER
- STOVE GUARD

CONTAINMENT LEGEND

- CABLE BASKET - POWER
- CABLE BASKET - DATA/EV (WITH DIVIDER FOR FIRE ALARM CABLING)

FIRE DETECTION & ALARM SYSTEM

- F.A.P. ANALOGUE ADDRESSABLE CONTROL & INDICATOR PANEL
- F.R.P. ANALOGUE ADDRESSABLE REPEAT INDICATOR PANEL WITH LIMITED CONTROLS
- MANUAL BREAK GLASS CALL POINT
- SMOKE DETECTOR
- HEAT DETECTOR
- MULTI-DETECTOR (HEAT AND SMOKE)
- DETECTOR WITH SOUNDER BASE
- DETECTOR WITH SOUNDER BASE & STROBE
- DETECTOR WITH STROBE BASE
- FIRE ALARM LINKED DOOR HOLD-OPEN CLOSER (BY THE MAIN CONTRACTOR)
- PILLOW VIBRATING ALERT UNIT
- REMOTE LED INDICATOR
- SMOKE DETECTOR IN CEILING VOID WITH REMOTE LED INDICATOR
- INTERFACE UNIT

COMMUNICATIONS

- TV AERIAL OUTLET
- SINGLE DATA POINT
- DUAL DATA POINT
- WIRELESS ROUTER LOCATED AT HIGH LEVEL
- COMMS CABINET
- HDMI OUTLET PLATE
- HEARING INDUCTION LOOP SYSTEM
- SINGLE TELECOM OUTLET

ASSISTANCE CALL SYSTEM

- MAIN INDICATOR PANEL
- OVER-DOOR SOUNDER & INDICATOR
- CEILING MOUNTED PULL CORD CALL POINT WITH REASSURANCE
- WALL MOUNTED CALL POINT WITH CALL, RESET & REASSURANCE
- SYSTEM REMOTE RESET UNIT

CCTV SYSTEM

- CRIME RECORD UNIT & 10" MONITOR WITH REMOTE ACCESS FACILITY, TO BE CRIME EVIDENCE STANDARD WITH 31 DAY RECORD
- INTERNALLY LOCATED FIXED MINI-DOME VANDAL RESISTANT CCTV CAMERA
- EXTERNALLY LOCATED IP66 RATED FIXED MINI-DOME VANDAL RESISTANT CCTV CAMERA

ACCESS CONTROL SYSTEM

- DOOR HANDLE KEY FOB ENTRY UNIT - BATTERY OPERATED
- KEY FOB ENTRY UNIT - MAINS OPERATION
- MFR
- GREEN DOOR RELEASE BUTTON WITH BREAK GLASS RELEASE
- INTERCOM WITH DOOR RELEASE
- ELECTROMAGNETIC LOCK

PUBLIC ADDRESS

- WALL MOUNTED SPEAKER

KITCHENETTE EQUIPMENT

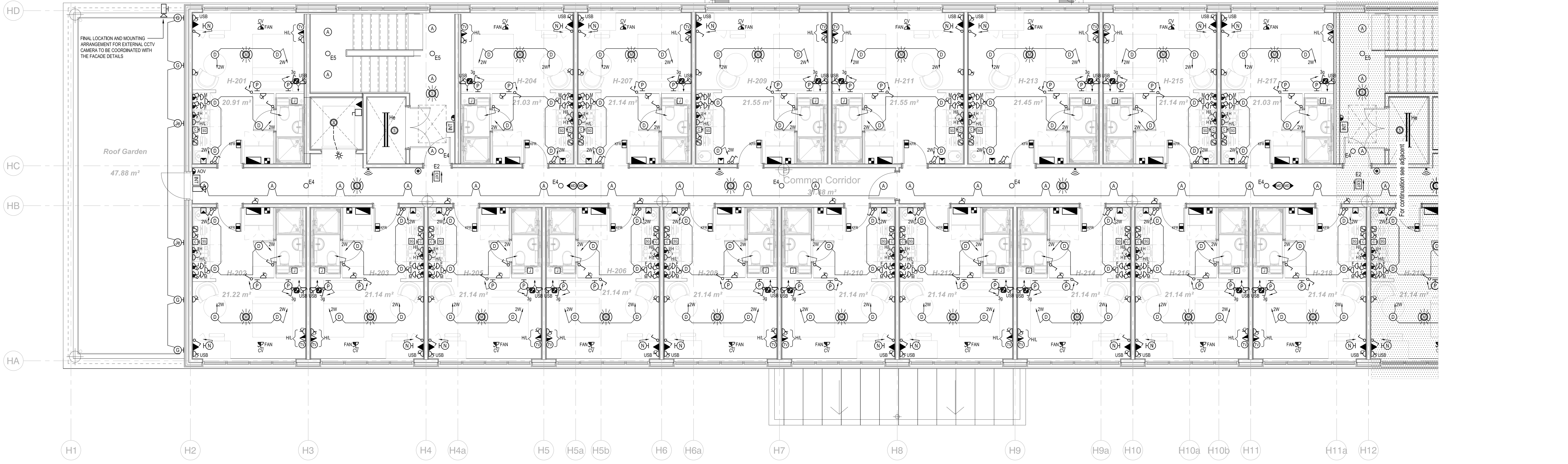
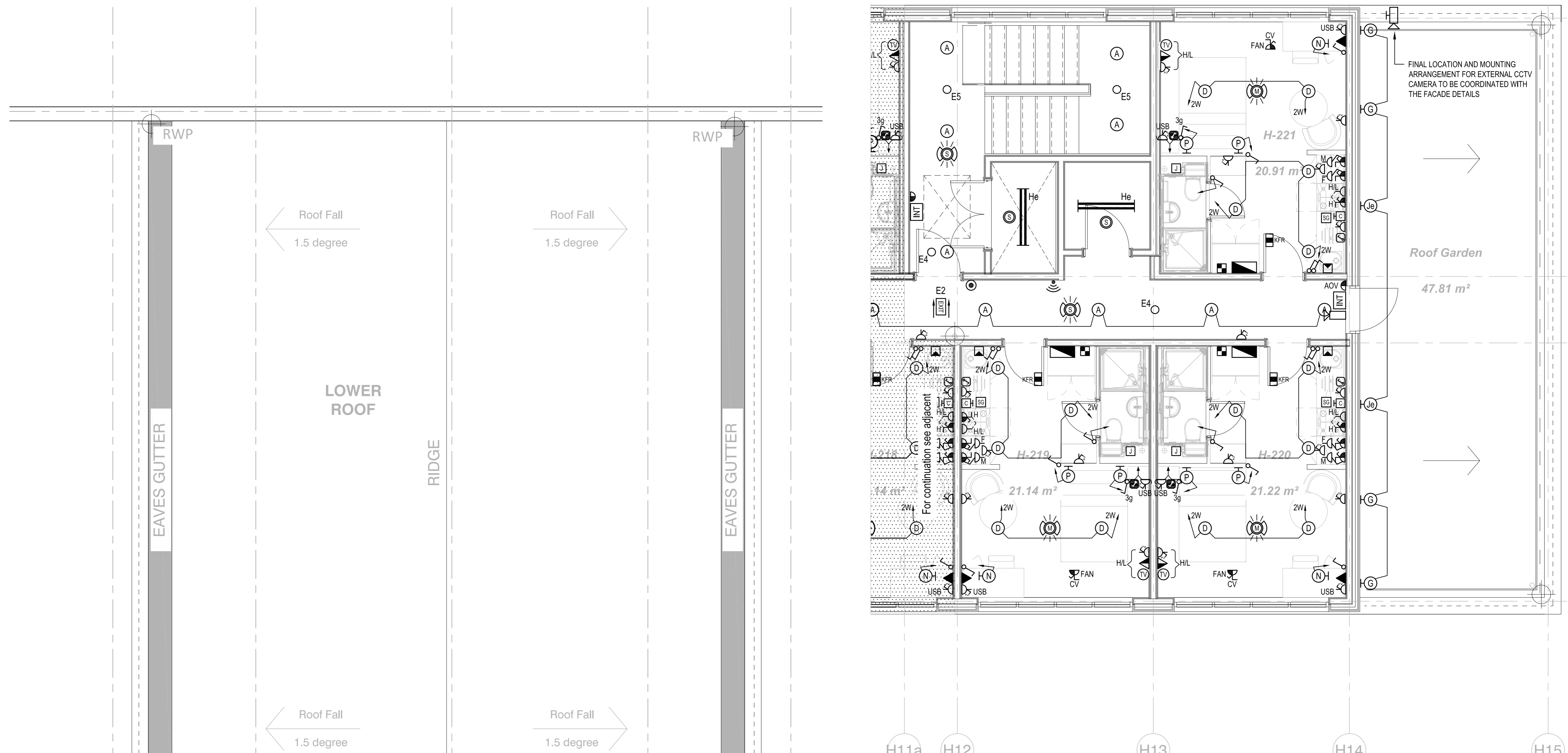
- M COMBI-MICROWAVE OVEN
- F UNDER-COUNTER REFRIGERATOR
- H RECIRCULATING COOKER HOOD

LIGHTING & SWITCHING

- REFER TO THE LUMINAIRE SCHEDULE FOR DETAILS OF THE INDIVIDUAL LUMINAIRES
- LIGHT SWITCH
 - 2W
 - K = SECRET KEY OPERATED SWITCH FOR EMERGENCY LIGHTING TEST
 - KM = SECRET KEY OPERATED SWITCH FOR ISOLATION FOR MAINTENANCE PURPOSES
 - ng = MULTI GANG SWITCH
 - WP INDICATES NUMBER OF GANGS
 - W = WEATHERPROOF (IP66)
 - DM = MANUAL DIMMING CONTROL
 - R = RETRACTIVE PUSHBUTTON SWITCH
 - P PASSIVE INFRARED ABSENCE DETECTOR
 - C PASSIVE INFRARED PRESENCE DETECTOR
 - M MICROWAVE PRESENCE DETECTOR - CIRCULAR DETECTION
 - D MICROWAVE PRESENCE DETECTOR - DIRECTIONAL DETECTION
 - E ELECTRICAL CONNECTION TO POD SERVICES
 - S SWITCH LINE
 - C CIRCUIT LINE
 - DL DESK LIGHT - LINEAR LED EXTRUSION WITH INTEGRAL DRIVER MOUNTED TO THE UNDERSIDE OF THE SHELVING OVER THE DESK. FREE ISSUED TO THE CONTRACTOR VIA CALL-OFF ARRANGEMENT
 - A SHALLOW DEPTH RECESSED LED DOWNLIGHT WITH WHITE BEZEL AND OPTICAL DRIVER
 - B WALL MOUNTED 800mm LONG LINEAR LED EXTRUSION WITH REMOTE DRIVER
 - C RECESSED LED DOWNLIGHT WITH WHITE BEZEL AND WIDE LIGHT DISTRIBUTION
 - D RECESSED LED DOWNLIGHT WITH WHITE BEZEL AND WIDE LIGHT DISTRIBUTION
 - E1 SELF-CONTAINED MAINTAINED EMERGENCY EXIT SIGN - SURFACE WALL MOUNTED TYPE
 - E2 SELF-CONTAINED MAINTAINED EMERGENCY EXIT SIGN - SEMI-RECESSED CEILING MOUNTED DOUBLE-SIDED FLAG TYPE
 - E3 SELF-CONTAINED MAINTAINED EMERGENCY EXIT SIGN - SUSPENDED FLAG TYPE
 - E4 LED EMERGENCY DOWNLIGHT WITH CORRIDOR LIGHT DISTRIBUTION
 - E5 LED EMERGENCY DOWNLIGHT WITH OPEN AREA LIGHT DISTRIBUTION
 - V WALL MOUNTED LED BULKHEAD LUMINAIRE. V INDICATES INTEGRAL EMERGENCY.
 - W WALL MOUNTED DIRECTABLE LED LUMINAIRE
 - H SURFACE MOUNTED PIVOT LINEAR LED LUMINAIRE. V INDICATES INTEGRAL EMERGENCY.
 - I WALL MOUNTED LED LUMINAIRE. V INDICATES INTEGRAL EMERGENCY.
 - S SURFACE MOUNTED SHALLOW DEPTH LED LUMINAIRE. V INDICATES INTEGRAL EMERGENCY.
 - D SEMI-RECESSED DIRECTABLE LED LUMINAIRE
 - N WALL MOUNTED DIRECTABLE DESK LIGHT LED LUMINAIRE
 - P WALL MOUNTED DIRECTABLE DESK LIGHT LED LUMINAIRE
 - R WALL MOUNTED BEDHEAD LIGHT WITH INTEGRAL DIRECTABLE LED READING LIGHT

MISCELLANEOUS

- DTL DROP TO LOW LEVEL
- DTB DROP TO BELOW
- DTM DROP TO MID-LEVEL
- RFB RISE FROM BELOW
- RTA RISE TO ABOVE
- HL INDICATES - HIGH LEVEL
- CV INDICATES - CEILING VOID MOUNTED
- WP INDICATES - WEATHERPROOF TO IP66



not produced from Architects drawing COMET ST1.02.ZDOR-A.2222-1048 Rev P19 08/02/2017

- NOTES:**
1. THIS DRAWING IS INDICATIVE ONLY AND DOES NOT NECESSARILY SHOW ALL THE INFORMATION NEEDED TO INTERPRET THE DESIGN INTENT OR THE CONSTRUCTION DETAILS.
 2. THE DRAWING CONTAINS INFORMATION FROM MORE THAN ONE SOURCE AND MUST BE READ IN CONJUNCTION WITH THE ARCHITECT'S DOCUMENTS, STRUCTURAL ENGINEER'S DETAILS AND ALL RELEVANT SPECIFICATIONS & ROOM DATA SHEETS.
 3. LOCATIONS OF EQUIPMENT SHALL BE COORDINATED WITH THE FINAL FURNITURE LAYOUTS.
 4. SMOKE DETECTORS TO BE PROVIDED AT THE UPPER LEVEL PART OF ALL RISER SHAFTS.
 5. INTERFACE UNITS TO BE PROVIDED FOR:
 - a. DOOR ACCESS SYSTEM (MANS OPERATION SYSTEM).
 - b. SMOKE CONTROL SYSTEM.
 - c. SMOKE DAMPERS.
 - d. SMOKE CURTAINS.
 6. CEILING VOIDS GREATER THAN 800mm TO BE PROVIDED WITH DETECTION & REMOTE INDICATION. REMOTE INDICATORS FOR DETECTORS OVER BEDROOMS SHALL BE LOCATED IN THE COMMON CORRIDOR OUTSIDE THE ROOM.
 7. EACH FLOOR TO BE ZONED VIA AUTOMATIC FIRE DETECTION INTERFACES TO ENSURE THE SMOKE VENTILATION SYSTEM OPERATES ON THE L1 FIRE ALARM SYSTEM.

PI	TENDER ISSUE	TH	18.10.17
REV	DESCRIPTION	CHKD	DATE

CLIENT:
COMET HATFIELD CONSTRUCTION LIMITED

ARCHITECT:
STRIDE TREGLOWN BRISTOL

Management and Engineering Services Limited
 150940
 DATE: OCT 2017
 ENGINEER: TH
 DRAWING: WS

FILE:
COMET HOTEL, HATFIELD
STUDENT ACCOMMODATION
ELECTRICAL SERVICES
STAGE 2: HOTEL EXTENSION, 2nd FLOOR - CONCEPT

DRAWING NO:
COMET AMES 06 02 DR E SS70 0721 D2 P1

PROJECT REF: ORIGINATOR VOL. LEVEL TYPE ROLE CLASS NUMBER REV
 DATE: 18/10/17