

LEGEND

- POWER**
- MAIN SWITCHBOARD
 - DISTRIBUTION BOARD
 - ISOLATOR
 - 13A DUAL EARTH SINGLE UNSWITCHED SOCKET OUTLET
 - 13A DUAL EARTH TWIN SWITCHED SOCKET OUTLET
 - 13A DUAL EARTH SWITCHED SINGLE SOCKET OUTLET
 - 13A DUAL EARTH TWIN SWITCHED SOCKET OUTLET WITH INTEGRAL 2A USB CHARGING UNIT
 - DADO TRUNKING MOUNTED BELOW DESK
 - UNSWITCHED FUSED CONNECTION UNIT
 - SWITCHED FUSED CONNECTION UNIT
 - COOKER OUTLET
 - VENTILATION BOOST SWITCH
 - VENTILATION PURGE/OVERHEAT SWITCH
 - STOVE GUARD

- COMMUNICATIONS**
- TV AERIAL OUTLET
 - SINGLE DATA POINT
 - DUAL DATA POINT
 - WIRELESS ROUTER LOCATED AT HIGH LEVEL
 - COMMS CABINET
 - HDMI OUTLET PLATE
 - HEARING INDUCTION LOOP SYSTEM

- FIRE DETECTION & ALARM SYSTEM**
- F.A.P. ANALOGUE ADDRESSABLE CONTROL & INDICATOR PANEL
 - F.R.P. ANALOGUE ADDRESSABLE REPEAT INDICATOR PANEL WITH LIMITED CONTROLS
 - MANUAL BREAK GLASS CALL POINT
 - SMOKE DETECTOR
 - HEAT DETECTOR
 - MULTI-DETECTOR (HEAT AND SMOKE)
 - DETECTOR WITH SOUNDER BASE
 - DETECTOR WITH SOUNDER BASE & STROBE

- DETECTOR WITH STROBE BASE
- FIRE ALARM LINKED DOOR HOLD-OPEN CLOSER (BY THE MAIN CONTRACTOR)
- PILLOW VIBRATING ALERT UNIT
- REMOTE LED INDICATOR
- SMOKE DETECTOR IN CEILING VOID WITH REMOTE LED INDICATOR
- INTERFACE UNIT

- ASSISTANCE CALL SYSTEM**
- MAIN INDICATOR PANEL
 - OVER-DOOR SOUNDER & INDICATOR
 - CEILING MOUNTED PULL CORD CALL POINT WITH REASSURANCE
 - WALL MOUNTED CALL POINT WITH CALL, RESET & REASSURANCE
 - SYSTEM REMOTE RESET UNIT

- CCTV SYSTEM**
- CRU CRIME RECORD UNIT & 19" MONITOR WITH REMOTE ACCESS FACILITY. TO BE CRIME EVIDENCE STANDARD WITH 31 DAY RECORD
 - INTERNALLY LOCATED FIXED MINI-DOME VANDAL RESISTANT CCTV CAMERA
 - EXTERNAL LOCATED IP66 RATED FIXED MINI-DOME VANDAL RESISTANT CCTV CAMERA

- ACCESS CONTROL SYSTEM**
- DOOR HANDLE KEY FOB ENTRY UNIT - BATTERY OPERATED
 - KEY FOB ENTRY UNIT - MAINS OPERATION
 - KEY FOB ENTRY UNIT - MAINS OPERATION WITH INTERCOM FACILITY TO PROVIDE TWO-WAY PRIVATE COMMUNICATION TO MANAGEMENT SUITE
 - 'GREEN' DOOR RELEASE BUTTON WITH BREAK GLASS RELEASE
 - INTERCOM WITH DOOR RELEASE
 - ELECTROMAGNETIC LOCK

- KITCHENETTE EQUIPMENT**
- M COMBI-MICROWAVE OVEN
 - F UNDER-COUNTER REFRIGERATOR
 - H RECIRCULATING COOKER HOOD

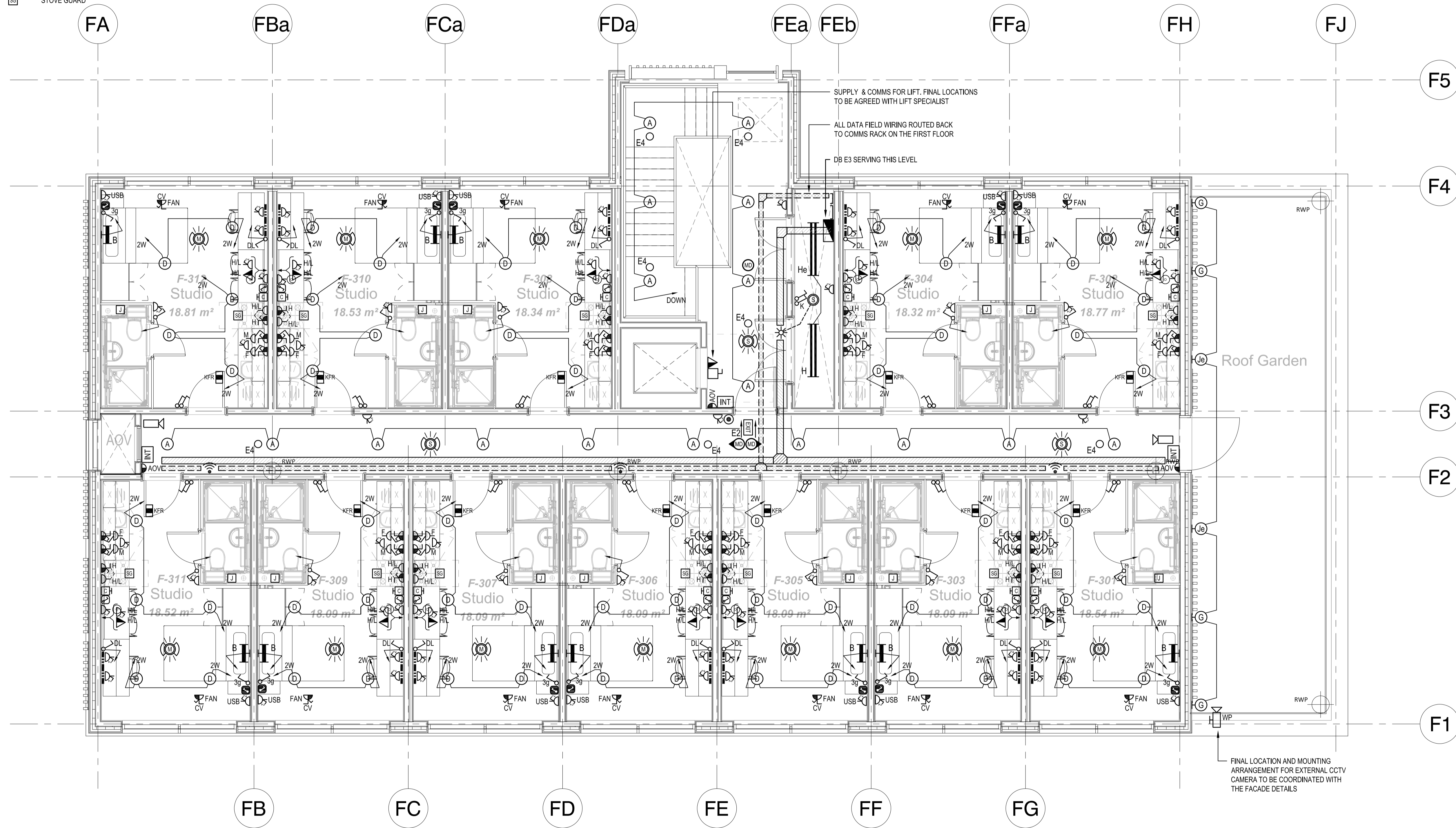
- CONTAINMENT LEGEND**
- CABLE BASKET - POWER
 - CABLE BASKET - DATA/ELV (WITH DIVIDER FOR FIRE ALARM CABLING)

- LIGHTING & SWITCHING**
- REFER TO THE LUMINAIRE SCHEDULE FOR DETAILS OF THE INDIVIDUAL LUMINAIRES
- 2W = 2 WAY
 - K = SECRET KEY OPERATED SWITCH FOR EMERGENCY LIGHTING TEST
 - KM = SECRET KEY OPERATED SWITCH FOR ISOLATION FOR MAINTENANCE PURPOSES
 - ng = MULTI-GANG SWITCH, '1' INDICATES NUMBER OF GANGS
 - WP = WEATHERPROOF (IP66)
 - DIM = MANUAL DIMMING CONTROL
 - R = RETRACTIVE PUSHBUTTON SWITCH

- AD PASSIVE INFRA-RED ABSENCE DETECTOR
- PD PASSIVE INFRA-RED PRESENCE DETECTOR
- MD MICROWAVE PRESENCE DETECTOR - CIRCULAR DETECTION
- MD MICROWAVE PRESENCE DETECTOR - DIRECTIONAL DETECTION
- J ELECTRICAL CONNECTION TO POD SERVICES

- DL DESK LIGHT - LINEAR LED EXTRUSION WITH INTEGRAL DRIVER MOUNTED TO THE UNDERSIDE OF THE SHELVING OVER THE DESK. FREE ISSUED TO THE CONTRACTOR VIA CALL-OFF ARRANGEMENT
- A SHALLOW DEPTH RECESSED LED DOWNLIGHT WITH WHITE BEZEL AND OPAL DIFFUSER
- B WALL MOUNTED 600mm LONG LINEAR LED EXTRUSION WITH REMOTE DRIVER
- C RECESSED LED DOWNLIGHT WITH WHITE BEZEL AND WIDE LIGHT DISTRIBUTION
- D RECESSED LED DOWNLIGHT WITH WHITE BEZEL AND WIDE LIGHT DISTRIBUTION
- E1 EXIT SELF-CONTAINED MAINTAINED EMERGENCY EXIT SIGN - SURFACE WALL MOUNTED TYPE
- E2 EXIT SELF-CONTAINED MAINTAINED EMERGENCY EXIT SIGN - SEMI-RECESSED CEILING MOUNTED DOUBLE-SIDED FLAG TYPE
- E3 EXIT SELF-CONTAINED MAINTAINED EMERGENCY EXIT SIGN - SUSPENDED FLAG TYPE
- E4 LED EMERGENCY DOWNLIGHT WITH CORRIDOR LIGHT DISTRIBUTION
- E5 LED EMERGENCY DOWNLIGHT WITH OPEN AREA LIGHT DISTRIBUTION
- F WALL MOUNTED LED BULKHEAD LUMINAIRE. 'e' INDICATES INTEGRAL EMERGENCY.
- H WALL MOUNTED DIRECTABLE LED LUMINAIRE
- H SURFACE MOUNTED IP66 LINEAR LED LUMINAIRE. 'e' INDICATE INTEGRAL EMERGENCY
- J WALL MOUNTED LED LUMINAIRE. 'e' INDICATES INTEGRAL EMERGENCY.
- K SURFACE MOUNTED SHALLOW DEPTH LED LUMINAIRE. 'e' INDICATES INTEGRAL EMERGENCY.
- L SEMI-RECESSED DIRECTABLE LED LUMINAIRE

- MISCELLANEOUS**
- DTLL DROP TO LOW LEVEL
 - DTB DROP TO BELOW
 - DTM DROP TO MID-LEVEL
 - RFB RISE FROM BELOW
 - RTA RISE TO ABOVE
 - HIL INDICATES - HIGH LEVEL
 - CV INDICATES - CEILING VOID MOUNTED
 - WP INDICATES - WEATHERPROOF TO IP66



ref produced from Architect's drawing: COMET-STL-00-ZZ-DR-F-ZZZZ-10103 Rev P22

- NOTES:**
- THIS DRAWING IS INDICATIVE ONLY AND DOES NOT NECESSARILY SHOW ALL THE INFORMATION NEEDED TO INTERPRET THE DESIGN INTENT OR THE CONSTRUCTION DETAILS.
 - THE DRAWING CONTAINS INFORMATION FROM MORE THAN ONE SOURCE AND MUST BE READ IN CONJUNCTION WITH THE ARCHITECT'S DOCUMENTS, STRUCTURAL ENGINEER'S DETAILS AND ALL RELEVANT SPECIFICATIONS & ROOM DATA SHEETS.
 - LOCATIONS OF EQUIPMENT SHALL BE COORDINATED WITH THE FINAL FURNITURE LAYOUTS.
 - SMOKE DETECTORS TO BE PROVIDED AT THE UPPER LEVEL PART OF ALL RISER SHAFTS.
 - INTERFACE UNITS TO BE PROVIDED FOR:
 - DOOR ACCESS SYSTEM (MAINS OPERATION SYSTEM).
 - SMOKE CONTROL SYSTEM.
 - SMOKE DAMPERS.
 - SMOKE CURTAINS.
 - CEILING VOIDS GREATER THAN 800mm TO BE PROVIDED WITH DETECTION & REMOTE INDICATION. REMOTE INDICATORS FOR DETECTORS OVER BEDROOMS SHALL BE LOCATED IN THE COMMON CORRIDOR OUTSIDE THE ROOM.
 - EACH FLOOR TO BE ZONED VIA AUTOMATIC FIRE DETECTION INTERFACES TO ENSURE THE SMOKE VENTILATION SYSTEM OPERATES ON THE L1 FIRE ALARM SYSTEM.

P2	TENDER ISSUE	TH	18.10.17
P1	PRELIMINARY ISSUE		
REV	DESCRIPTION	CHKD	DATE

CLIENT:
COMET HATFIELD
CONSTRUCTION LIMITED

ARCHITECT:
STRIDE TREGLOWN
BRISTOL

Management and Engineering Services Limited

SUITE 1 & 2 ANGLS COURT, 8789 HIGH STREET
WALSLEY, BRISTOL BS31 1WH
TEL: 01275 851100 FAX: 01275 851144
email: eng@amberman.co.uk

SCALE: 1:50@A1 CHECKED:
DATE: JUL 2017 QA:
ENGINEER: TH AMBER
DRAWN: RC PROJECT No: B2623

TITLE:
COMET HOTEL, HATFIELD
STUDENT ACCOMMODATION
ELECTRICAL SERVICES
STAGE 2: BLOCK F, LEVEL 03 - CONCEPT

DRAWING No:
COMET AMES OF 03 DR E SS70 0631 D2 P2

PROJECT REF ORIGINATOR VOL LEVEL TYPE ROLE CLASS NUMBER SUIT REV

PLOT DATE: 19.10.2017

A1 Original Sheet Size