

EXTERNAL SERVICES

REFER TO THE LUMINAIRE SCHEDULE FOR DETAILS OF THE INDIVIDUAL LUMINAIRES

- X1 POST TOP LUMINAIRE WITH CRADLE MOUNTING BRACKET AND LED SOURCE. MOUNTED ON MATCHING FINISH 4m COLUMN
- X2 POST TOP LUMINAIRE WITH CANOPY REFLECTOR AND LED SOURCE. MOUNTED ON MATCHING FINISH 4m COLUMN
- X3 COLUMN MOUNTED LUMINAIRE WITH ASYMMETRICAL DISTRIBUTION AND LED SOURCE. MOUNTED ON MATCHING FINISH 4m COLUMN
- X4 BOLLARD LUMINAIRE WITH INTEGRAL EMERGENCY CONVERSION AND LED SOURCE
- X5 GROUND RECESSED LED UPLIGHT
- ⊕ SURFACE MOUNTED IP66 LINEAR LED LUMINAIRE. ⊕ INDICATE INTEGRAL EMERGENCY
- ⊙ WALL MOUNTED LED LUMINAIRE. ⊙ INDICATES INTEGRAL EMERGENCY.

CCTV SYSTEM

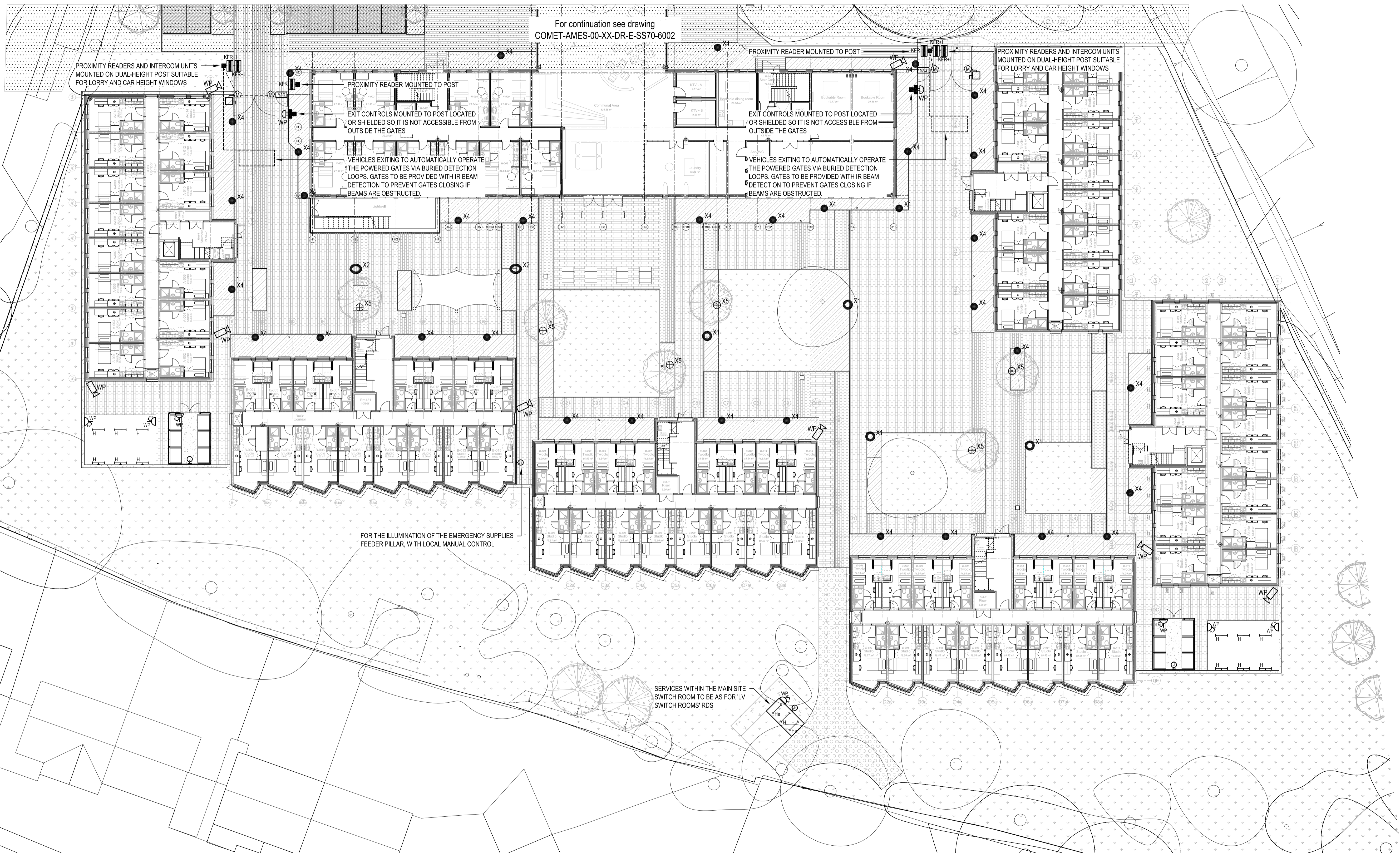
- WP EXTERNAL LOCATED IP66 RATED FIXED MINI-DOME VANDAL RESISTANT CCTV CAMERA
- ANPR EXISTING AUTOMATIC NUMBER PLATE RECOGNITION (ANPR) CAMERA RETAINED

ACCESS CONTROL SYSTEM

- KFR KEY FOB ENTRY UNIT - MAINS OPERATION
- KFRH KEY FOB ENTRY UNIT - MAINS OPERATION WITH INTERCOM FACILITY TO PROVIDE TWO-WAY PRIVATE COMMUNICATION TO MANAGEMENT SUITE
- IR 'GREEN' DOOR RELEASE BUTTON WITH BREAK GLASS RELEASE
- IR INTERCOM WITH DOOR RELEASE
- EMC ELECTROMAGNETIC LOCK

POWER

- ISOLATOR
- WP 13A IP66 TWIN SWITCHED SOCKET OUTLET



xref produced from Architect's drawing: COMET_STL_00_ZZ_M3_LandscapeWP with tracking DWG- DRAFT 171002 Rev - 03/10/2017

NOTES:

1. THIS DRAWING IS INDICATIVE ONLY AND DOES NOT NECESSARILY SHOW ALL THE INFORMATION NEEDED TO INTERPRET THE DESIGN INTENT OR THE CONSTRUCTION DETAILS.
2. THE DRAWING CONTAINS INFORMATION FROM MORE THAN ONE SOURCE AND MUST BE READ IN CONJUNCTION WITH THE ARCHITECT'S DOCUMENTS, STRUCTURAL ENGINEER'S DETAILS AND ALL RELEVANT SPECIFICATIONS & ROOM DATA SHEETS.
3. EXTERNAL SERVICES LOCATIONS SHALL BE COORDINATED WITH ALL OTHER SERVICES, BUILDING STRUCTURE AND INTERNAL BUILDING LAYOUT.
4. EXTERNALLY LOCATED EQUIPMENT SHALL BE SUITABLY IP RATED.
5. REFER TO SPECIFICATION SECTION V41 FOR DETAILS OF THE EXTERNAL LIGHTING REQUIREMENTS AND CONTROLS.
6. LIGHTING TO THE CYCLE AND REFUSE STORES SHALL BE SUPPLIED SEPARATELY FROM THE GENERAL EXTERNAL LIGHTING SO THAT IT REMAINS ENERGISED AT ALL TIMES, WITH CONTROL BY THE LOCAL PRESENCE DETECTOR DEVICES.
7. REFER ALSO TO THE INDIVIDUAL BUILDING DRAWINGS FOR ADDITIONAL EXTERNAL CCTV CAMERAS, ACCESS CONTROLS AND BUILDING MOUNTED LUMINAIRES.

REV	DESCRIPTION	CHKD	DATE
P1	TENDER ISSUE	TH	18.10.17

CLIENT:
**COMET HATFIELD
CONSTRUCTION LIMITED**

ARCHITECT:
**STRIDE TREGLOWN
BRISTOL**

Management and Engineering Services Limited

SUITES 1 & 2 WINGS COURT, 87/89 HIGH STREET
WALSLEY, BRISTOL BS38 1WH
Tel: 01275 851100 Fax: 01275 851344
email: eng@amberman.co.uk

SCALE: 1:200@A1
DATE: OCT 2017
ENGINEER: TH
DRAWN: RC

CHECKED: TH
QA: EJB
PROJECT No: B2623

TITLE:
**COMET HOTEL, HATFIELD
STUDENT ACCOMMODATION
SITE PLAN, STAGE 2:
EXTERNAL ELECTRICAL SERVICES (1 of 2) - CONCEPT**

DRAWING No:
COMET AMES 00 XX DR E SS70 6001 D2 P1

PROJECT REF ORIGINATOR VOL LEVEL TYPE ROLE CLASS NUMBER SUIT REV

PLOT DATE: 19.10.2017

A1 Original Sheet Size